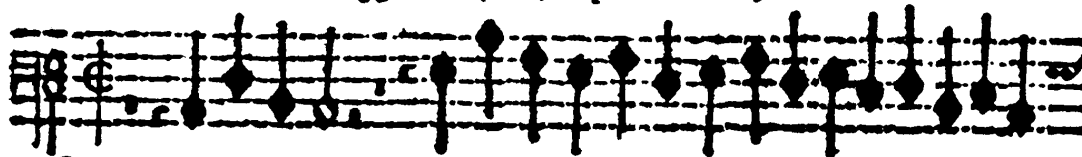


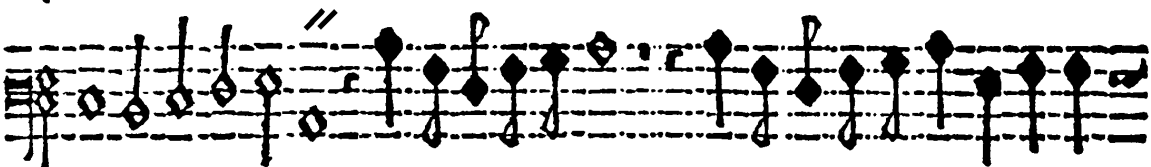
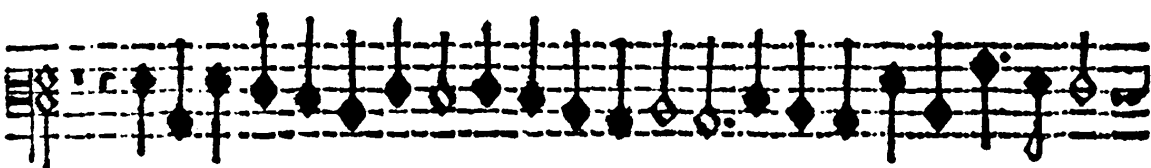
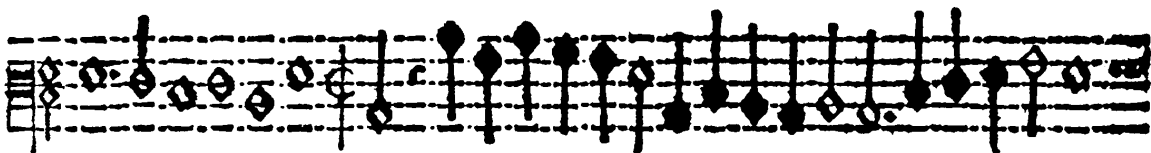
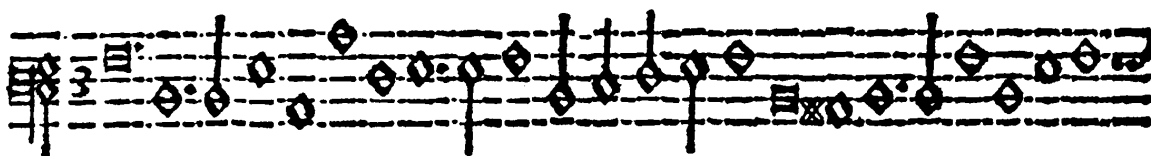
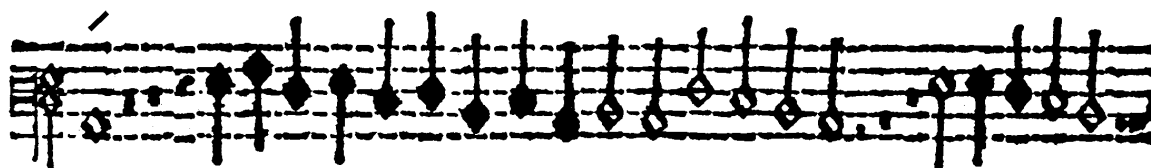
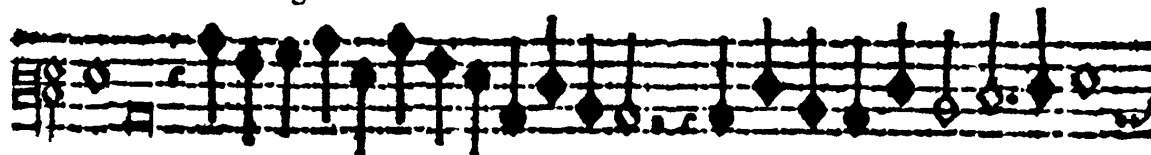
Claudio Merulo da Correggio. à 4 & 5. li placet.

36

BASSO



Canon Trigesimaesla



36

BASSO

Handwritten musical notation on three staves. The first staff begins with a treble clef and a key signature of one sharp (F#). The notation consists of a series of eighth and sixteenth notes, some with stems pointing up and some down. Above the first staff, the number '36' is written. Above the second staff, there are three slanted lines '///'. The third staff ends with a double bar line. The notation is somewhat stylized and appears to be a transcription or a specific dialect of musical notation.

A single empty musical staff with five lines.

A single empty musical staff with five lines.

A single empty musical staff with five lines.

A single empty musical staff with five lines.

A single empty musical staff with five lines.

A single empty musical staff with five lines.