

Intonation

Basso Continuo



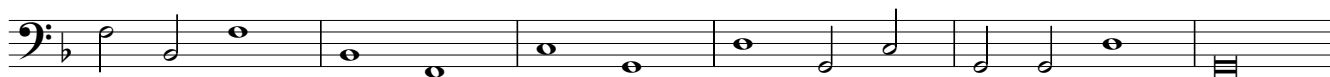
Basso Continuo



5



8



14



17



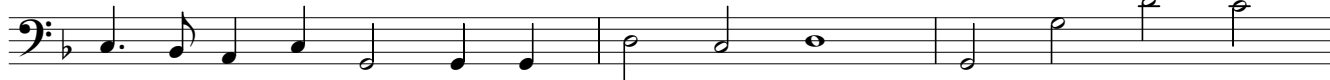
19



21



24



27



30



III. Canticum Simeonis "Herr, nun lässest du deinen Diener in Frieden fahren" H. Schütz SWV 281

Basso Continuo

32

35

37

40

43

46

49

51

53

55

59

Detailed description: This image shows the Basso Continuo part of a musical score for the Canticum Simeonis by Heinrich Schütz. The score is written in bass clef with a key signature of one flat (B-flat). It consists of ten staves of music, each beginning with a measure number in a box. The notation includes various note values (quarter, eighth, and sixteenth notes), rests, and accidentals. The piece concludes with a double bar line at the end of the final staff.