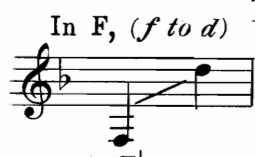
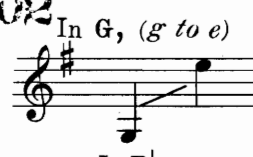




Soprano or
Tenor (*eb to eb*)
and
Contralto or
Bass (*eb to c*)
(*Melody Alternates*)



148702



Duet



Soprano or
Tenor (*bb to g*)
and
Alto or
Bass (*bb to eb*)
(*Melody Alternates*)

ASLEEP IN THE DEEP



LYRIC BY

ARTHUR J. LAMB

MUSIC BY

H. W. PETRIE

Solo 50¢ T

Duet 65¢ T

QUARTET - MALE, FEMALE AND MIXED VOICES 15 CENTS EACH NET

VIOLIN AND PIANO 50¢ T
CELLO AND PIANO 50¢ T

VIOLIN, CELLO
AND PIANO 65¢ T

TRADEMARK



REGISTERED

STANDARD

M. WITMARK & SONS
NEW YORK

PRINTED IN U.S.A.

BEAUTIFUL BALLADS

By ERNEST R. BALL

SELECTED FROM

THE WITMARK BLACK AND WHITE SERIES

I Never Knew

Lyric by J. KEIRN BRENNAN

How Much God Gave To Me

SOLO, THREE KEYS - C, (c to c) Eb (eb to eb) G, (g to g) 50¢ T each, postpaid
DUET, TWO KEYS - Db, Tenor and Baritone (lead) G, Soprano (lead) and Alto . . . 65¢ T " "
QUARTET, MALE, FEMALE and MIXED VOICES 15¢ " Net "

With motion and expression

I nev - er knew that love could fill the world Each fleec - y cloud a flag of faith un -
furled — Till I looked in - to eyes that made me see, I nev - er knew how much God gave to

The musical score for "I Never Knew" is written for voice and piano. It features a melody line with lyrics and a piano accompaniment. The key signature is one flat (Bb), and the time signature is common time (C). The score is divided into two systems, each with a vocal line and a piano accompaniment. The lyrics are: "I nev - er knew that love could fill the world Each fleec - y cloud a flag of faith un - furled — Till I looked in - to eyes that made me see, I nev - er knew how much God gave to".

Both songs copyrighted MCMXXIII by M. Witmark & Sons
International Copyright Secured

Lyric by GEORGE GRAFF, Jr.

Little Road

SOLO THREE KEYS - C, (c to c) Eb, (eb to eb) F, (f to f) 50¢ T each postpaid
QUARTET, MALE, FEMALE and MIXED VOICES 15¢ " Net "

Moderately, with expression

Where do you go to, lit - tle road, As o - ver the hill you roam — Do you find a
lit - tle house Where love has made a home — Has God wandered down your path And

The musical score for "Little Road" is written for voice and piano. It features a melody line with lyrics and a piano accompaniment. The key signature is one flat (Bb), and the time signature is 8/8. The score is divided into two systems, each with a vocal line and a piano accompaniment. The lyrics are: "Where do you go to, lit - tle road, As o - ver the hill you roam — Do you find a lit - tle house Where love has made a home — Has God wandered down your path And".

THE ABOVE CAN BE HAD WHEREVER MUSIC IS SOLD OR OF THE PUBLISHERS
M. WITMARK & SONS-DEPT W-1350 BROADWAY, NEW YORK
Prices, Solos 50¢ T ——— Duets 65¢ T ——— Quartets 15¢ Net each, postpaid

If you are interested in

ERNEST R. BALL BALLADS

send for catalog of his songs. It includes the complete poems and thematic quotations from 32 of his greatest successes. ENCLOSE STAMP FOR MAILING



Trade Mark
Registered



Trade Mark
Registered

Asleep In The Deep

Stormy the night and the waves roll high,
Bravely the ship doth ride;
Hark! while the light-house bell's solemn cry
Rings o'er the sullen tide.
There on the deck see two lovers stand,
Heart to heart beating and hand in hand,
Tho' death be near, she knows no fear,
While at her side is the one ever dear.

Loudly the bell in the old tower rings,
Bidding us list to the warning it brings.
Sailor, take care! Sailor, take care!
Danger is near thee, Beware! Beware!
Beware! Beware!
Many brave hearts are asleep in the deep,
So beware! beware!

What of the storm when the night is o'er?
There is no trace or sign!
Save where the wreckage hath strewn the shore,
Peaceful the sun doth shine.
But when the wild raging storm did cease,
Under the billows two hearts found peace.
No more to part, no more of pain,
Now may the bell toll its warning in vain.

Arthur J. Lamb

Asleep In The Deep

Lyric by
ARTHUR J. LAMB

Music by
H. W. PETRIE

Moderately with much expression

The piano introduction consists of two systems of music. The first system is marked with a forte 'f' dynamic. The right hand features a steady eighth-note accompaniment in D major, while the left hand plays a descending eighth-note line. The second system continues this texture, with the right hand playing chords and the left hand maintaining the descending line.

The first system of the vocal melody is in D major, 12/8 time. The lyrics are: "Storm-y the night and the waves roll high, Brave-ly the ship doth ride; What of the storm when the night is o'er? There is no trace or sign!". The piano accompaniment features a steady eighth-note accompaniment in the right hand and a descending eighth-note line in the left hand, marked with a piano 'p' dynamic.

The second system of the vocal melody continues the melody. The lyrics are: "Hark! while the light-house bell's sol- emn cry Rings o'er the sul- len tide Save where the wreck-age hath strewn the shore, Peace-ful the sun doth shine.". The piano accompaniment continues with the same texture as the first system, marked with a piano 'p' dynamic.

With very much expression

There on the deck see two lov - ers stand, Heart to heart beat-ing and hand in hand, Tho'
But when the wild rag-ing storm did cease, Un - der the bil - lows two hearts found peace. No

death be near, she knows no fear, While at her side is the one ev - er dear.
more to part, no more of pain, Now may the bell toll its warn-ing in vain.

REFRAIN

Loud - ly the bell _____ in the old _____ tow - er rings, _____

Bid - ding us list _____ to the warn - ing it brings _____

Sail - or, take care! — Sail - or, take care! — Dan - ger is near — thee, Be -

- ware Be - ware! — Be - ware! — Be - ware!

ad lib.

Man - y brave hearts are a - sleep in the deep, So be - ware! be - ware! —

porta

Man - y brave hearts are a - sleep in the deep, So be - ware! be - - ware! —

ff fz ppp

EVERYBODY SHOULD SING THIS BEAUTIFUL BALLAD

THAT WONDERFUL MOTHER OF MINE

THE TEXT—by *CLYDE HAGER*, carries a tender, fragrant message and is written in the simple language that even a child can grasp.

THE MELODY—by *WALTER GOODWIN*, is beautiful and just as simple: easy flowing and quickly memorized, with a real tune to give it added sweetness.

AN IDEAL SONG FOR THE HOME

SCHOOL, CONCERT, LYCEUM, VAUDEVILLE, etc.—NOT ALONE FOR MOTHER'S DAY BUT FOR EVERY DAY IN THE YEAR

THE moon never beams without bringing
me dreams
Of that wonderful mother of mine;
The birds never sing but a message they bring
Of that wonderful mother of mine.
Just to bring back the time
That was so sweet to me;
Just to bring back the day
When I sat on her knee.
You are a wonderful mother;
Dear old mother of mine.
You'll hold a spot down deep in my heart,
Till the stars no longer shine.
Your soul shall live on forever,
On through the fields of time.
For there'll never be another to me
Like that wonderful mother of mine.
I pray ev'ry night to our Father above,
For that wonderful mother of mine.
I ask Him to keep her as long as He can,
That wonderful mother of mine.
There are treasures on earth
That make life seem worth while,
But there's none can compare
With my dear mother's smile.



Copyright MCMXVIII by M. Witmark & Sons - International Copyright Secured

EASY
TO
LEARN

A THOUGHT SUCH AS THIS INSTILLED IN CHILDHOOD
REMAINS ENSHRINED IN THE HEART FOREVER

HARD
TO
FORGET

PUBLISHED AS FOLLOWS

Solo, Four keys, *A^b*, (*b^b to e^b*) *B^b*, (*c to f*) *C*, (*d to g*) *E^b*, (*f to b^b*) 50¢ T

Duet, Two Keys, *B^b*, (*Melody low*) *C*, (*Melody high*) 65¢ T

Octavo, Two Part 12¢ Three Part (S.S.A. or T.B.B. and S.A.B.) 15¢ Four Part, Male, Female and Mixed 15¢ net
Orchestration or Band 50¢ each net

ALL PRICES ARE POST PAID

TRADE MARK



REGISTERED

THE ABOVE CAN BE HAD WHEREVER MUSIC IS SOLD OR OF THE PUBLISHER
M. WITMARK & SONS DEP'T W. 1650 BROADWAY NEW YORK

Prices: Solos 50¢ T— Duets 65¢ T— Quartets 15¢ each, postpaid

If you are Interested in Beautiful Songs Sacred or Secular send for SONGLAND, - Sixty one complete Poems and Thematic quotations from some of the most beautiful numbers in the well-known **WITMARK BLACK AND WHITE SERIES**

ENCLOSE FIVE CENTS IN STAMPS FOR MAILING

TRADE MARK



REGISTERED

- A LITTLE WHILE
SACRED SONG
- WHEN IRISH EYES ARE SMILING
SONG
- I DO BELIEVE
SACRED SONG
- SMILIN' THROUGH
SONG
- MOTHER MACHREE
SONG
- GRATEFUL O LORD AM I
SACRED SONG
- DEAR LITTLE BOY OF MINE
SONG
- STARLIGHT LOVE
SONG
- CAN'T YOU HEAR ME CALLIN'
CAROLINE
SONG
- EVER AT REST
SACRED SONG
- LET THE REST OF THE WORLD
GO BY
SONG
- I'LL FORGET YOU
SONG
- IT WAS FOR ME
SACRED SONG
- MA LITTLE SUNFLOWER
GOOD NIGHT
SONG
- MY ROSARY FOR YOU
SONG
- THOU ART MY GOD
SACRED SONG
- THERE'S A LONG, LONG TRAIL
SONG
- I COME TO THEE
SACRED SONG
- KISS ME AGAIN
SONG
- SKIES ARE DARK
WHEN YOU'RE AWAY
SONG
- TEACH ME TO PRAY
SACRED SONG
- THE WANT OF YOU
SONG
- GOD SHALL WIPE AWAY
ALL TEARS
SACRED SONG
- MY WILD IRISH ROSE
SONG
- EVENING BRINGS REST
AND YOU
SONG
- SUNRISE AND YOU
SONG
- OUR FAITH IN THEE
SACRED SONG
- WHERE THE RIVER SHANNON FLOWS
THE IRISH SWANEE RIVER
SONG
- WHO KNOWS?
SONG
- IN A LITTLE TOWN NEAR BY
SONG
- CLOSER STILL WITH THEE
SACRED SONG
- MY DAYS ARE IN HIS HANDS
SONG
- SHINE O HOLY LIGHT
SACRED SONG
- HONEY IF YOU ONLY KNEW
SONG
- COMFORT YE ONE ANOTHER
SACRED SONG
- ONE MORE DAY
SONG
- IN THE GARDEN OF MY HEART
SONG
- OH LORD REMEMBER ME
SACRED SONG
- JUST BEEN WOUND
ALL DAY LONG
SONG
- GOO MADE YOU
SONG
- SPRING'S A LOVELY
SONG
- ANGEL OF LIGHT LEAD ON
SONG
- MY JEAN
SONG
- ASLEEP IN THE DEEP
SONG
- THE SILENT VOICE
SACRED SONG
- SORTER MISS YOU
SONG



Song Lovers the World Over Know
 This **TRADE MARK**
 It Represents *The BEST* There Is
 In **BEAUTIFUL BALLADS**
 (SACRED - SECULAR) Solos - Duets - Trios - Quartets

They can be played on Piano or Organ
 Ideal for the Home - Concert
 and Church

All **THESE** Songs
 and more
 are in

OUR CATALOG
SONGLAND

61 Pages
 each like
 THIS

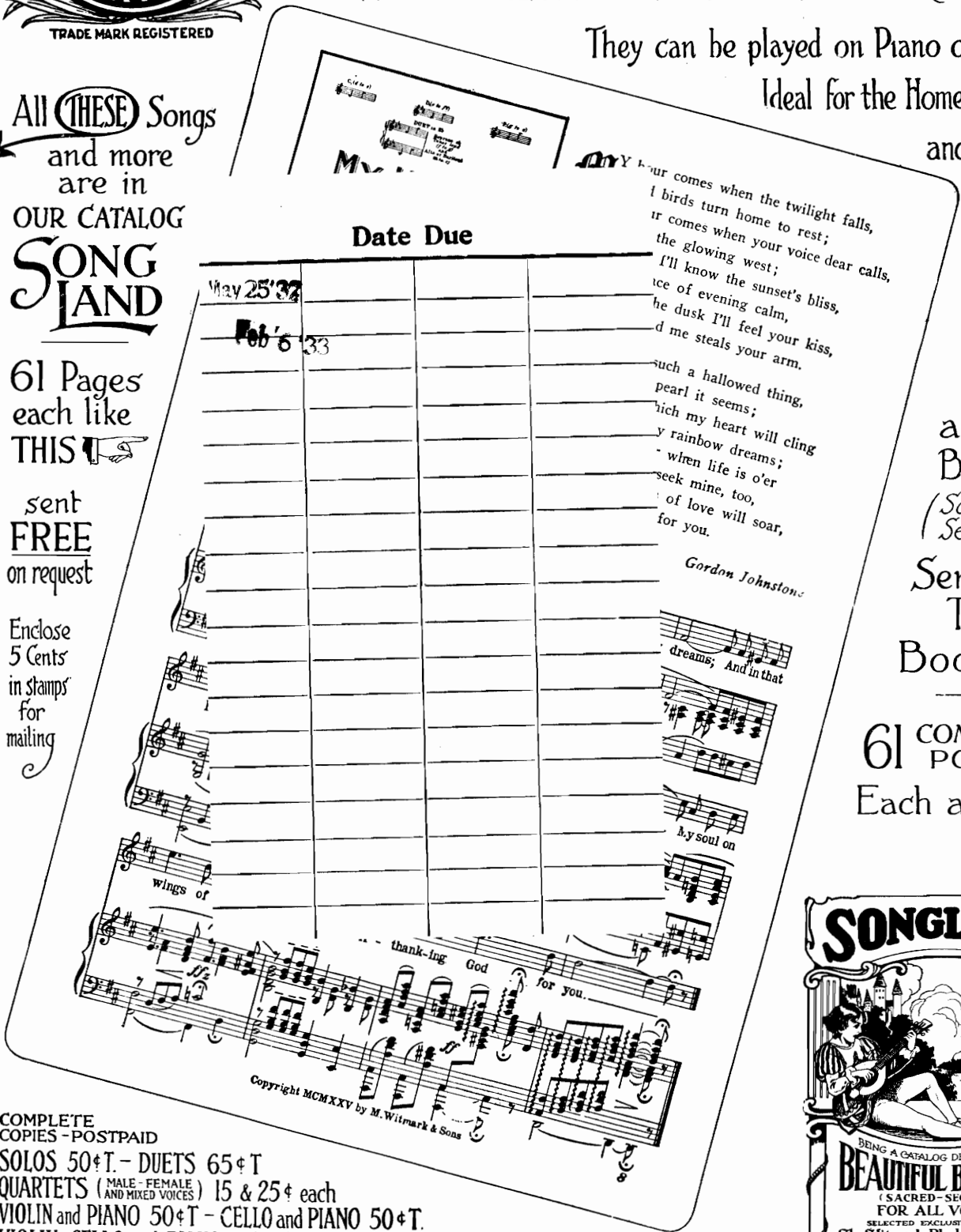
sent
FREE
 on request

Enclose
 5 Cents
 in stamps
 for mailing

COMPLETE
 COPIES - POSTPAID

SOLOS 50¢ T. - DUETS 65¢ T.
 QUARTETS (MALE - FEMALE
 AND MIXED VOICES) 15 & 25¢ each
 VIOLIN and PIANO 50¢ T. - CELLO and PIANO 50¢ T.
 VIOLIN, CELLO and PIANO 65¢ T.

Can be had wherever Music is sold or of the Publishers -
**M. WITMARK & SONS · DEPT. W · 1650 BROADWAY
 NEW YORK**



If
 You
 Love
 a Good
 Ballad
 (Sacred or
 Secular)
 Send for
 This
 Booklet

61 COMPLETE
 POEMS
 Each a Gem.

