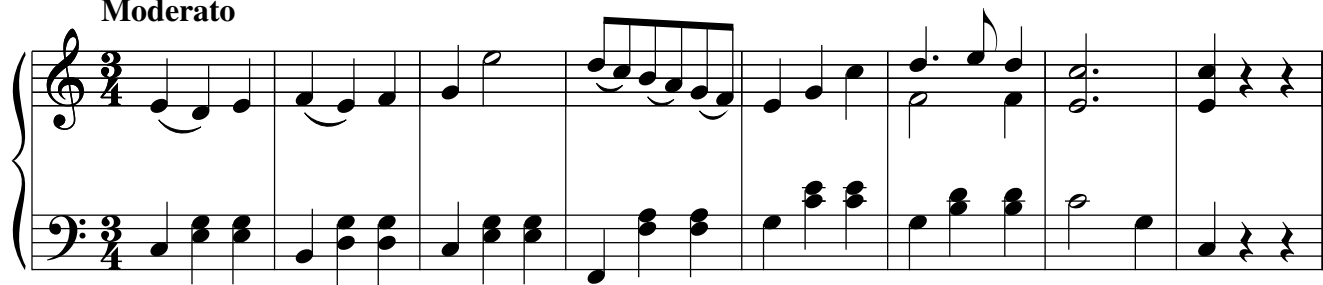


WHY NO ONE TO LOVE?

Edited by
Robert A. Hudson

Words & Music by
Stephen C. Foster

Moderato



9 C G7/D C/E F C/G

No one to love in this beau - ti - ful world, Full of warm hearts and
Dark is the soul that has noth - ing to dwell on! How sad must its
9 Man - y a fair one that dwells on the earth Who would greet you with

The first system of the song, starting at measure 9, includes vocal lines and piano accompaniment. The vocal melody is in the treble clef, and the piano accompaniment is in the grand staff. Chord symbols are placed above the vocal line.

14 G7 C C G7/D C/E

bright beam - ing eyes? _____ Where is the lone heart that noth - ing can
bright - est hours prove! _____ Lone - ly the dull brood - ing spir - it must
14 kind words of cheer, _____ Man - y who glad - ly would join in your

The second system of the song, starting at measure 14, continues the vocal and piano accompaniment. It includes the same chord symbols as the first system.

Why No One to Love?

20

F C/G G7 C G (omit 5) G (omit 5)

find That is love - ly be - neath the blue skies. No one to love!
 be, That has no one to cher - ish and love. No one to love!
 20 pleas-ures Or share in your grief with a tear. No one to love!

27

G7 (omit 5) C C Dm7/A G C

No one to love! Why no one to love? What have you
 No one to love! Why no one to love? What have you
 27 No one to love! Why no one to love? Where have you

34

G/D C F C/G G7 C

done in this beau-ti - ful world, That you're sigh-ing of no one to love?
 done in this beau-ti - ful world, That you're sigh-ing of no one to love?
 34 roamed in the beau-ti - ful world That you're sigh-ing of no one to love?

41

41