

G.Ph. Telemann

Sonate G-Dur

für Flöte, Oboe, Violine und B.c.

TWV 43:G6

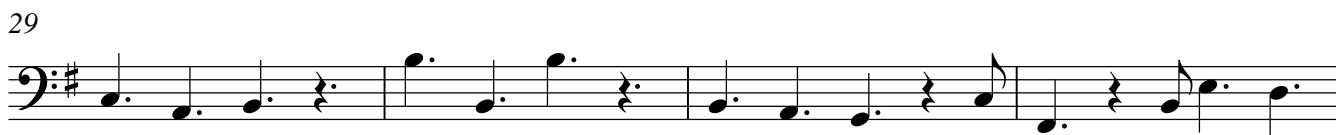
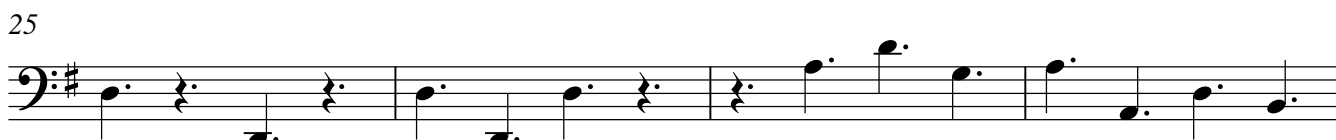
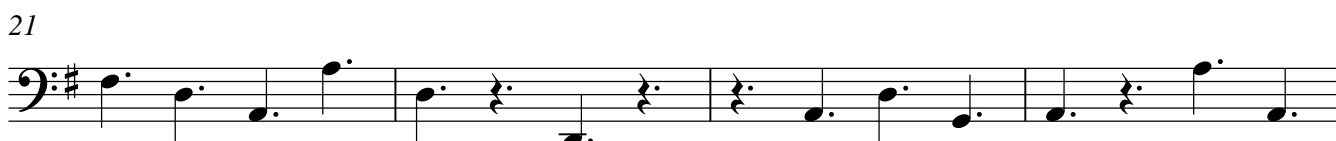
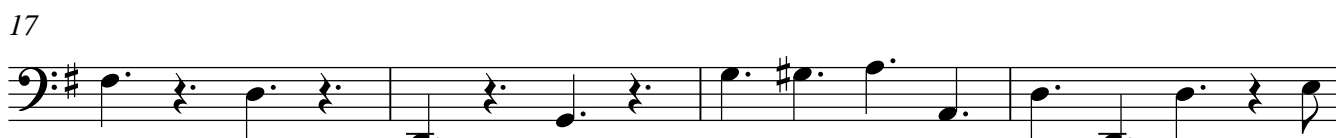
Violoncello

Sonate G-Dur

TWV 43:G6

G. Ph. Telemann

Vivace



33



37



41



45



49



54



58



62



66



Grave

First staff of music for the 'Grave' section, measures 1-8. The key signature is one sharp (F#) and the time signature is 3/4. The music consists of a series of quarter and eighth notes.

9

Second staff of music for the 'Grave' section, measures 9-17. The music continues with quarter and eighth notes, including a sharp sign on the eighth note of measure 16.

18

Third staff of music for the 'Grave' section, measures 18-26. The music features a series of quarter notes, with a slur covering measures 24-26.

27

Fourth staff of music for the 'Grave' section, measures 27-31. The music continues with quarter and eighth notes.

32

Fifth staff of music for the 'Grave' section, measures 32-36. The music concludes with a double bar line and repeat dots.

Allegro

First staff of music for the 'Allegro' section, measures 1-4. The key signature is one sharp (F#) and the time signature is common time (C). The music starts with a rest followed by eighth notes.

5

Second staff of music for the 'Allegro' section, measures 5-9. The music features eighth notes and rests.

10

Third staff of music for the 'Allegro' section, measures 10-13. The music continues with eighth notes and rests.

14

Fourth staff of music for the 'Allegro' section, measures 14-17. The music concludes with a double bar line and repeat dots.

The image displays a page of musical notation for the cello part, page 5. The music is written in bass clef with a key signature of one sharp (F#). The score consists of five staves of music. The first staff begins with a repeat sign and contains a series of eighth and sixteenth notes. The second staff features a mix of eighth notes and rests. The third staff continues with eighth notes and includes some beamed sixteenth notes. The fourth staff shows a sequence of eighth notes with some rests. The fifth staff concludes the page with a double bar line and repeat dots, featuring a half note and a quarter note.