

# Petronio Franceschini

## Concerto per due trombe, archi e basso continuo (1680)

Violino II



## Sonata in D

Petronio Franceschini  
arr. Hendrik Jan Lindhout

Grave

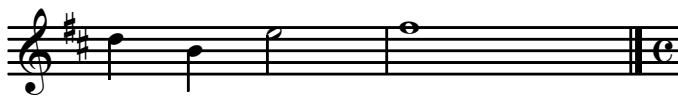
I.



7



12



II.

Allegro



6



11



16



21



26



31



Adagio

III.

7

13

20

27

34

41

*mp*

IV.

Allegro

6

13

18

26

31

36

42

47

53