

Präludium

Constantin Stephan
Dec. 1982

$\text{♩} = 80$
Adagio

pp crescendo
trmur
ff

pp crescendo
trmur
ff

p crescendo
trmur
ff

mf crescendo, allargando
trmur
ff

f a tempo, grave

un poco, decrescendo

inf

Pol. *

mf

un poco crescendo un poco allargando

a tempo

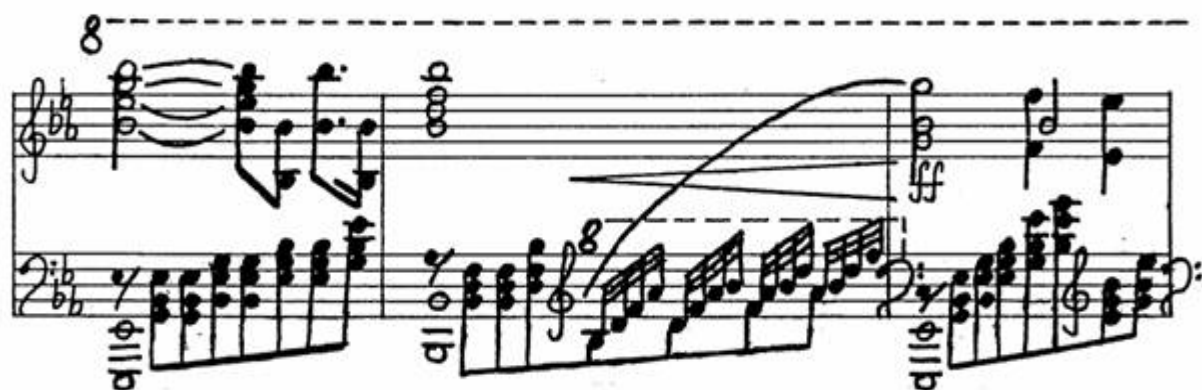
mf (rubato)

8

8

Handwritten musical score for piano, consisting of five systems of staves. The notation includes treble and bass clefs, key signatures of two flats (B-flat and E-flat), and various musical notations such as chords, arpeggios, and dynamics.

The first system (measures 1-3) features a treble staff with a key signature change from two flats to one flat and sharp (B-flat and F-sharp), and a bass staff with a key signature of two flats. The second system (measures 4-6) continues with a key signature of two flats. The third system (measures 7-9) includes a dynamic marking of *mf* (mezzo-forte). The fourth system (measures 10-12) shows a key signature change to one flat and sharp. The fifth system (measures 13-15) includes a key signature change to one flat and sharp and a dynamic marking of *mf*.





A handwritten musical score for the song 'The Rose Tree'. The score is written on ten staves, organized into five systems of two staves each. The key signature is one sharp (F#), and the time signature is 2/4. The notation includes various musical symbols such as notes, rests, beams, and slurs. There are also some handwritten annotations and markings, including a large '8' at the top right, a 'pp' (pianissimo) marking, and a 'mp' (mezzo-piano) marking. The score is a piano arrangement of the traditional folk song.



Handwritten musical score for a piano piece, featuring six systems of staves. The notation includes treble and bass clefs, key signatures (one sharp and two flats), and various musical symbols such as notes, rests, and chords. Dynamics like *ff* and *f* are present. Performance instructions include *accelerando, cresc.*, *crescendo*, and *rit.*. The score is divided into measures by vertical bar lines, and some sections are marked with a bracket and the number 8. The final system ends with a double bar line and a repeat sign.

System 1: Treble clef, key signature of one sharp (F#). Bass clef, key signature of two flats (Bb, Eb). Dynamics: *ff*. Measure 8 is indicated.

System 2: Treble clef, key signature of two flats (Bb, Eb). Bass clef, key signature of two flats (Bb, Eb). Measure 8 is indicated.

System 3: Treble clef, key signature of two flats (Bb, Eb). Bass clef, key signature of two flats (Bb, Eb). Measure 8 is indicated.

System 4: Treble clef, key signature of two flats (Bb, Eb). Bass clef, key signature of two flats (Bb, Eb). Dynamics: *f*, *crescendo*. Measure 8 is indicated.

System 5: Treble clef, key signature of two flats (Bb, Eb). Bass clef, key signature of two flats (Bb, Eb). Dynamics: *accelerando, cresc.*, *rit.*. Measure 8 is indicated.

System 6: Treble clef, key signature of two flats (Bb, Eb). Bass clef, key signature of two flats (Bb, Eb). Measure 8 is indicated.