

Elsie M. Menzies
Bootharaba Hill Gymkhana

CRYSTAL SLIPPER WALTZ

Specially Composed

by

Victor Champion.

for

A.C. Williamson's Ltd

ENORMOUSLY

SUCCESSFUL

PANTOMIME

CINDERELLA

Produced by

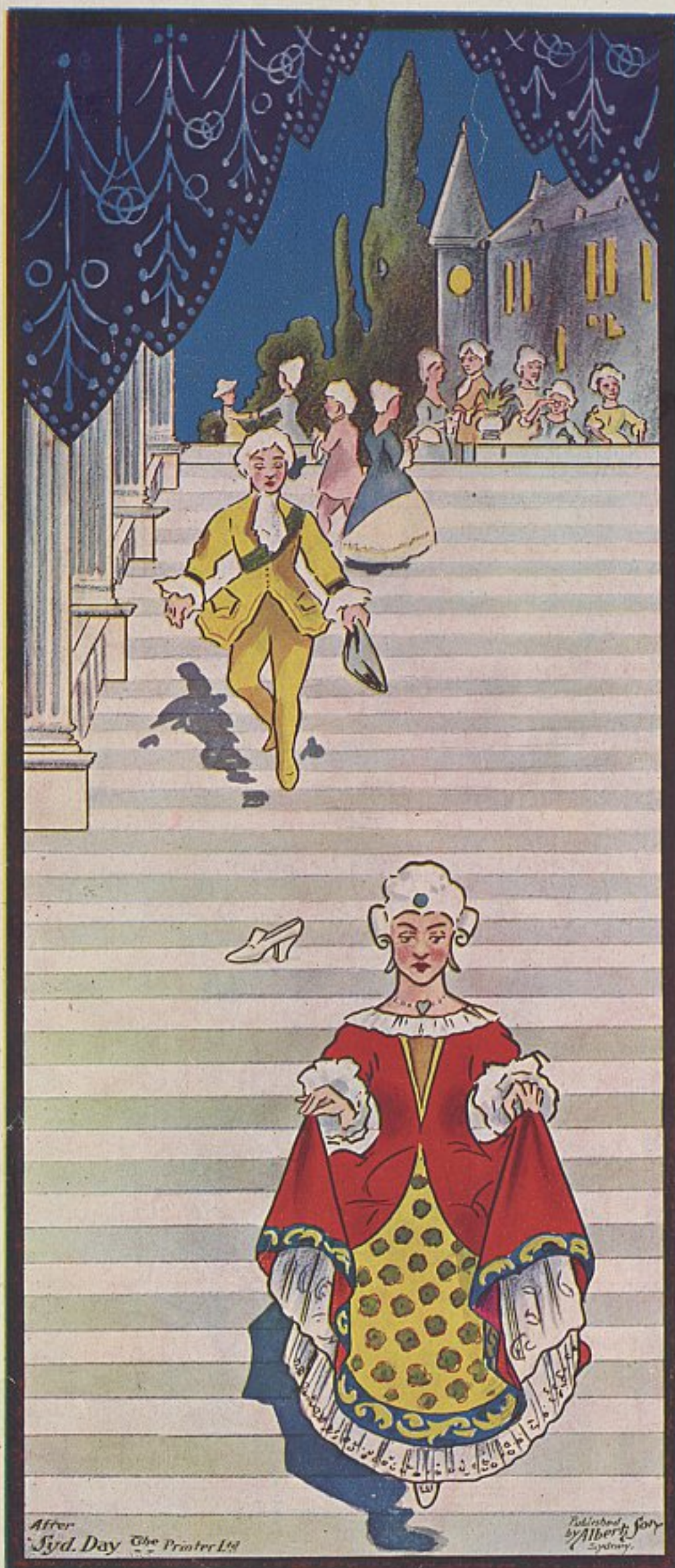
Chas. H. Wearman



Jos. W. Stern & Co. NEW YORK

5

42



After
Jyd. Day The Printer Ltd

Published by Albert's Music Stores
Sydney

CRYSTAL SLIPPER WALTZ.

by Victor Champion

Andantino.

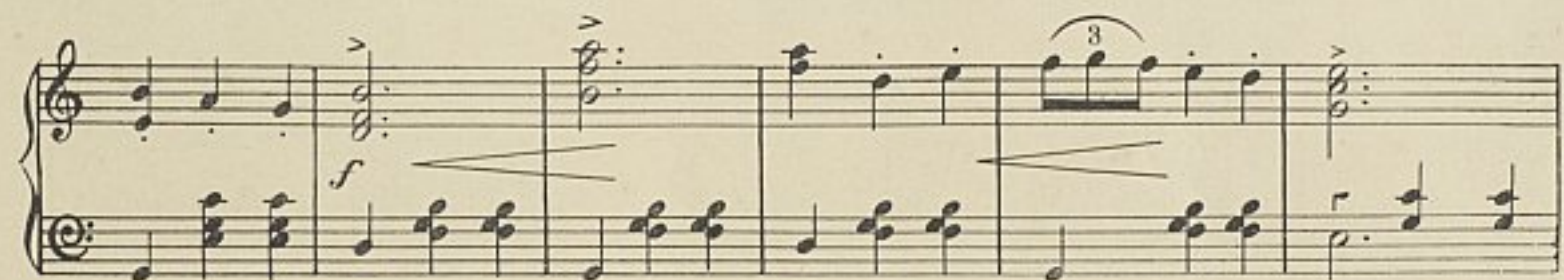
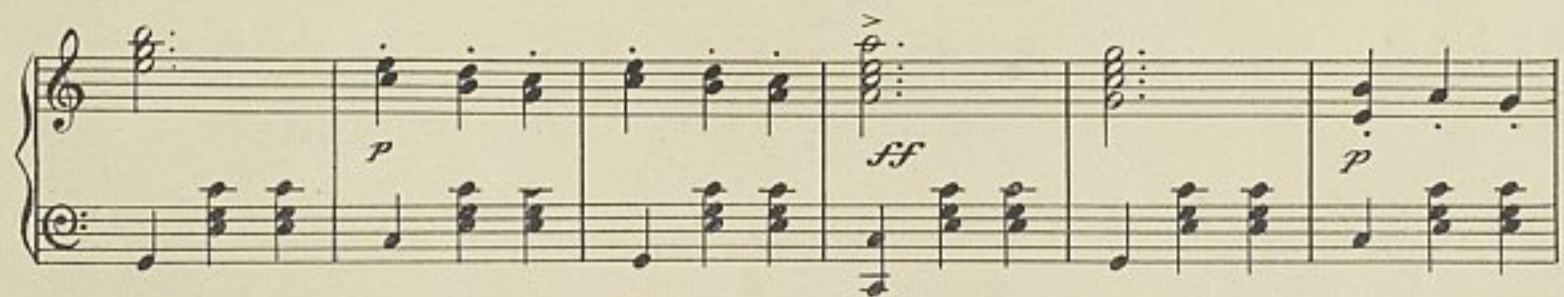
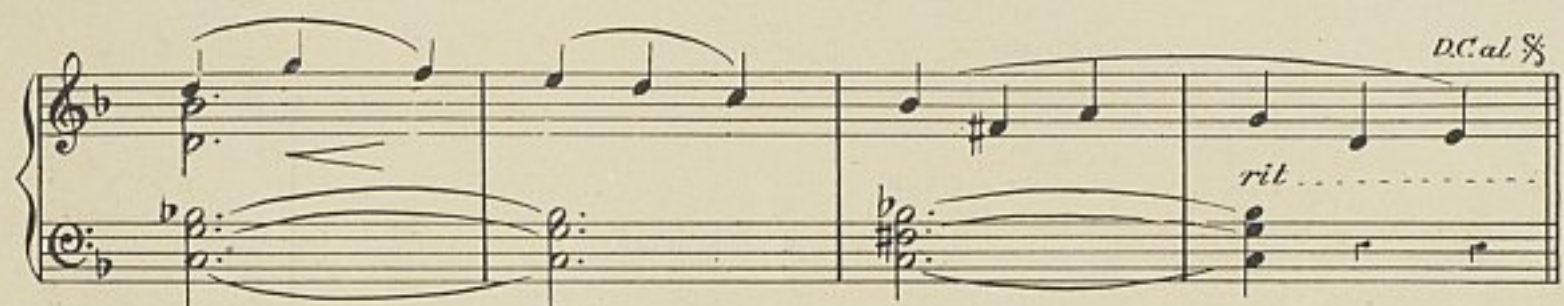
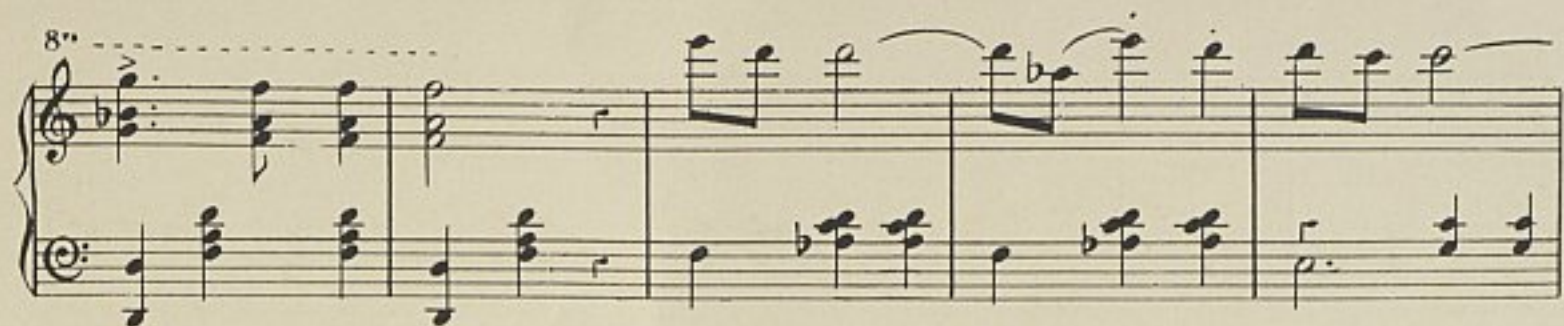


Valse § 2nd time in Octaves





Crystal Slipper 2.





A handwritten musical score for a piece titled "Crystal Slipper 5." The score is written on six systems of grand staves (treble and bass clef). The key signature is one flat (B-flat). The first system features a treble staff with a melodic line and a bass staff with a harmonic accompaniment. The second system includes a fortissimo (ff) dynamic marking. The third system continues the melodic and harmonic development. The fourth system features a treble staff with a series of chords and a bass staff with a simple accompaniment. The fifth system features a treble staff with a series of chords and a bass staff with a simple accompaniment. The sixth system features a treble staff with a series of chords and a bass staff with a simple accompaniment. The score concludes with a double bar line and repeat signs.

Crystal Slipper 5.

A Popular Pantomime Hit.

THE K-NUTS MARCH & TWOSTEP.

A Medley introducing "GILBERT THE FILBERT," THE RECRUITING SONG—"I'LL MAKE A MAN OF YOU," and other hits from J. C. Williamson's Ltd. Pantomime, "CINDERELLA."

Artistically blended and cleverly arranged. An excellent Twostep for Dancing.

MUS N
mbo
786.218846
C452

THE K-NUTS MARCH AND TWO-STEP.

On Melodies From "The Passing Show."

INTRODUCTION.

HERMAN FINCK.



MARCH.

Song "Gilbert the Filbert"



Copyright 1914 in U S A by Hawkes & Son. Copyright for all Countries.

HAWKES & SON Denman Street Piccadilly Circus, LONDON, W.

For Sale at all Music Stores or send 2/- to the Publishers,

J. ALBERT & SON, 137-9 King Street, Sydney.

