

TRATTENIMENTI per CAMERA

Opus XXII, Bologna - 1660

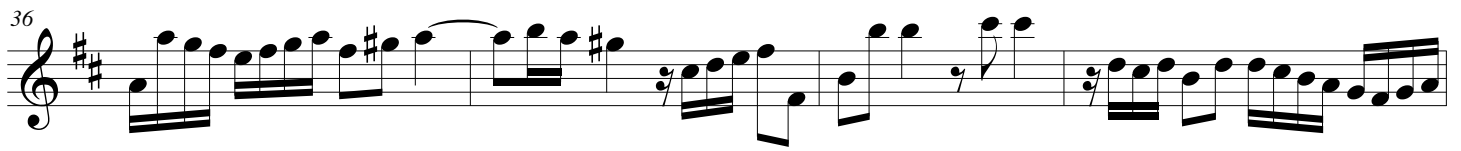
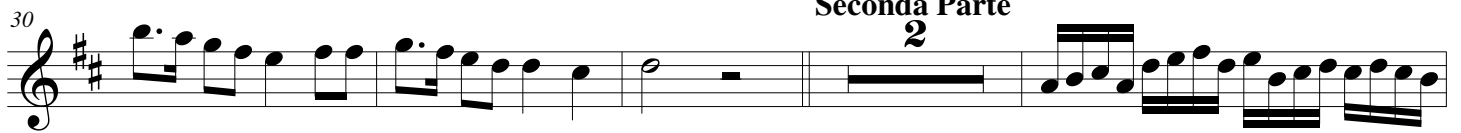
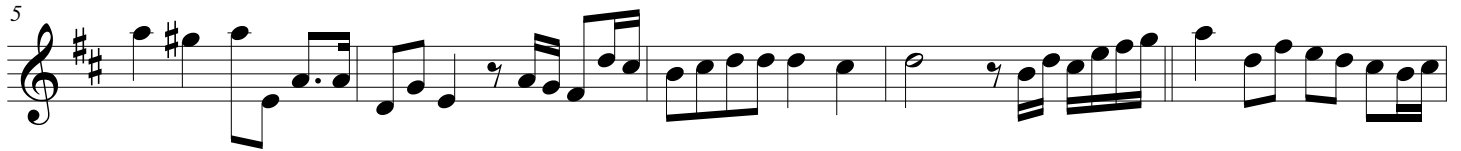
for Trumpet, Violin & Organ

Violin

Maurizio Cazzati (1616 - 1678)

Arr. Michel Rondeau

Aria (Prima parte) ♩ = 100



Seconda Parte

2

Cazzati, Opus XXII - TRATTENIMENTI per CAMERA - Violin

48 *tr*

53 *tr* 1.

57 2. Terza et Ultima parte

61

64

68

71

74

77 *tr*

80

83 *tr*

86

tr
rit.

2. Ballo dell'Aria

94

99

Sua Corrente

112

119

127

135

144

151

3. Ballo delle Dame

Musical staff for '3. Ballo delle Dame' starting at measure 161. The staff shows a sequence of notes in C major, 4/4 time, including a repeat sign and a fermata.

Musical staff for '3. Ballo delle Dame' starting at measure 163. It features a series of sixteenth-note runs and ends with a repeat sign and a fermata marked with the number 4.

Musical staff for '3. Ballo delle Dame' starting at measure 171. It includes trills (tr), double trills (2X), and a 3/4 time signature change.

Sua Corrente

Musical staff for 'Sua Corrente' starting at measure 179. The piece is in 3/4 time and begins with a repeat sign.

Musical staff for 'Sua Corrente' starting at measure 183. It features a double trill (2X) and ends with a repeat sign and a fermata.

4. Ballo de Cavaglieri

Musical staff for '4. Ballo de Cavaglieri' starting at measure 193. The piece is in C minor, 4/4 time, and begins with a repeat sign.

Musical staff for '4. Ballo de Cavaglieri' starting at measure 195. It continues the piece with various rhythmic patterns and a repeat sign.

Musical staff for '4. Ballo de Cavaglieri' starting at measure 200. It features a series of sixteenth-note runs.

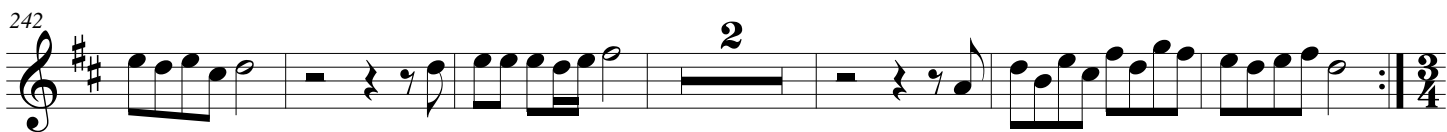
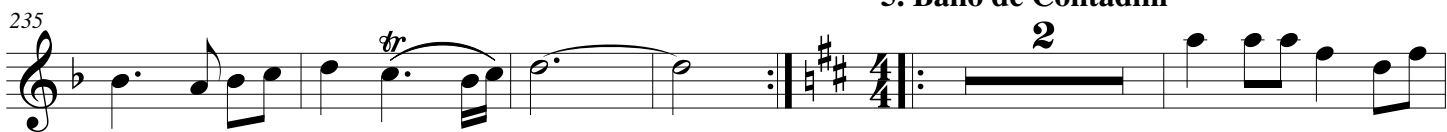
Musical staff for '4. Ballo de Cavaglieri' starting at measure 204. It includes a section labeled 'Sua Corrente' in 3/4 time, marked with a repeat sign and a fermata.

Musical staff for '4. Ballo de Cavaglieri' starting at measure 209. It features a section with a fermata marked with the number 4.

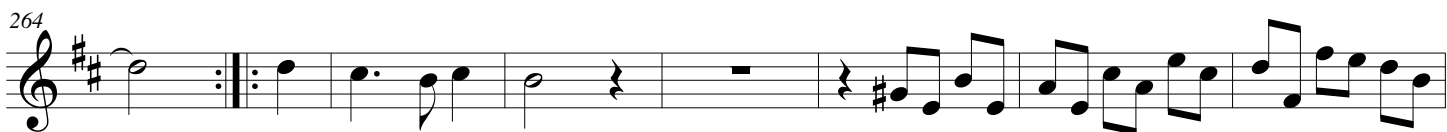
Musical staff for '4. Ballo de Cavaglieri' starting at measure 219. It includes a trill (tr) and a section with a fermata marked with the number 2.



5. Ballo de Contadini



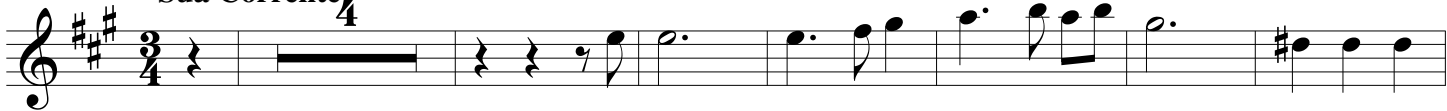
Sua Corrente

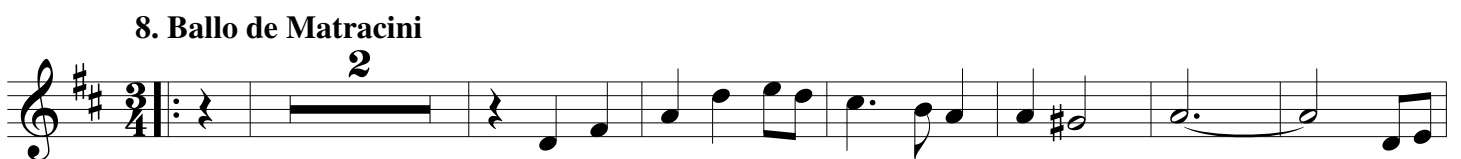
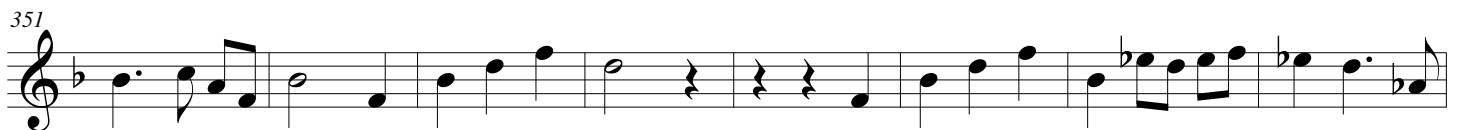
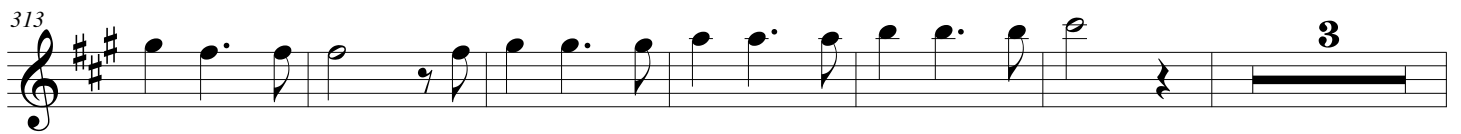


6. Ballo de Tedeschi



Sua Corrente





389

IX

404 IX

411 IX 2X

419

9. Ballo delle Ombre - Adagio

426

Sua Corrente

434

443

451 tr

459

9. Ballo delle Ninfe

464

470

Sua Corrente

4

485

493

11. Brando Primo

501

2

IX

508

3X-Fine

12. Brando Secondo

513

D.C. al Fine

518

524

13. Passacaglio

528

538

546

551

558

566

574

583

589

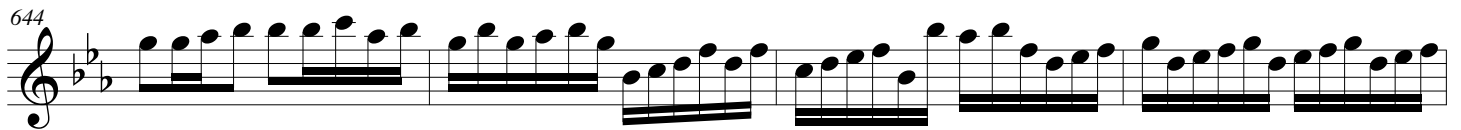
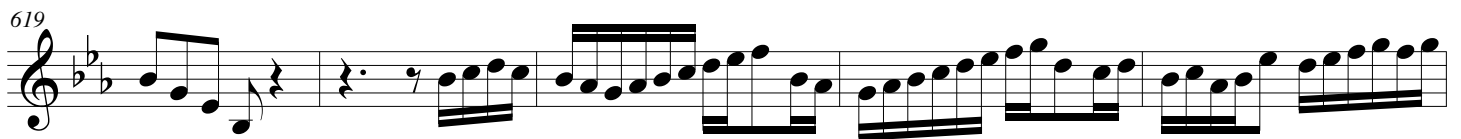
595

600

606

14. Ciaccona

612



15. Capriccio sopra 12 Nozze

