

Fasch, Johann Friedrich (1688-1758)

BRD DS Mus.ms 290/12

Concerto/a/Oboe/2 Violin/e/Cembalo./Fasch./ (G-dur)



Largo C G-dur - Allegro  
C G-dur - Largo 3/4 G-  
dur - Allegro 6/8 G-dur.

Ms. ca.1740.

33 x 20,5 cm.

4 St.:ob,vl 1,2,cembalo(unbez.). je 1 Bl.

Alte Sign.: N<sup>ro</sup> 57. 5281.

Titel von der Hand Graupners.

Küntzel Nr.2.

5281 (1/10)  
m 5  
Mus 290  
No 12

N<sup>o</sup> 57 = N. 12

Concerto

a

Oboe

2 Violin

fol. 1-4  
u

e  
Cembal.

Großherzoglich  
Hessische  
Hofbibliothek



Fant.

Concerto.

Oboë.

*Largo.*



*Allegro.*



*Allegro*



*Largo.*

*Allegro.*

Concerto.

*Largo.*

*Allegro.*

2<sup>o</sup> Volti.

*And.  
Largo.*

Musical notation (treble and bass clefs, key signature of one sharp, 3/4 time signature)

Musical notation (treble and bass clefs, key signature of one sharp, 3/4 time signature)

Musical notation (treble and bass clefs, key signature of one sharp, 3/4 time signature)

*Allegro.*

Musical notation (treble and bass clefs, key signature of one sharp, 3/4 time signature)

Musical notation (treble and bass clefs, key signature of one sharp, 3/4 time signature)

Musical notation (treble and bass clefs, key signature of one sharp, 3/4 time signature)

Musical notation (treble and bass clefs, key signature of one sharp, 3/4 time signature)

Musical notation (treble and bass clefs, key signature of one sharp, 3/4 time signature)

Großherzoglich  
Hessische  
Landbibliothek

5281

290/12

Violino.

3

Concerto.

*Largo.*

*Allegro.*

*piano.*

*forte.*

*Largo.*

Handwritten musical notation on a five-line staff, featuring a treble clef, a key signature of one sharp (F#), and a common time signature (C). The notation includes various note values and rests.

Handwritten musical notation on a five-line staff, continuing the piece with similar notation to the previous staff.

*Allegro.*

Handwritten musical notation on a five-line staff, featuring a treble clef, a key signature of one sharp (F#), and a common time signature (C). The notation is more rhythmic and includes slurs.

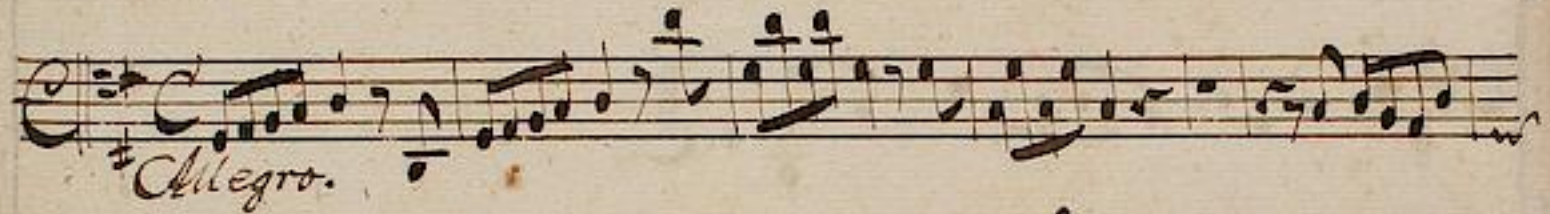
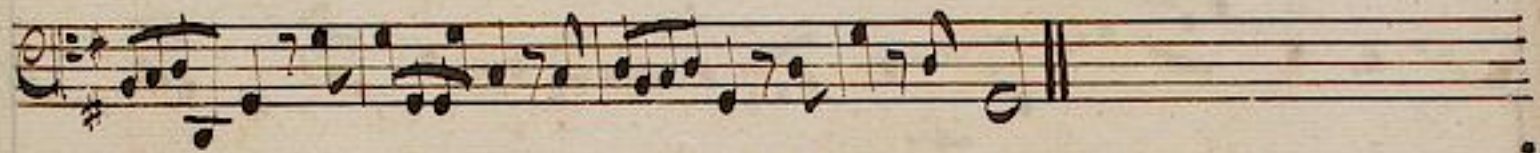
Handwritten musical notation on a five-line staff, continuing the piece with similar notation to the previous staff.

Handwritten musical notation on a five-line staff, continuing the piece with similar notation to the previous staff.

Handwritten musical notation on a five-line staff, concluding the piece with a double bar line.

Großherzoglich  
Hessische  
Hofbibliothek





*Largo. Tacet.*



Allegro.

Großherzoglich  
hessische  
Halbbibliothek

