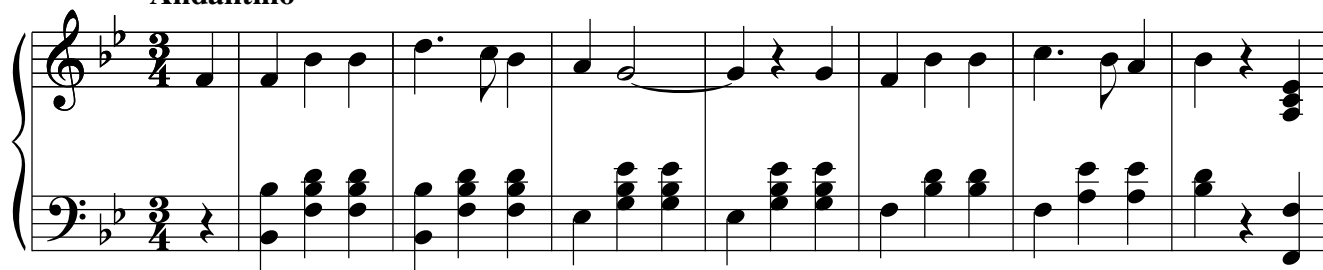


# My Hopes Have Departed Forever

Edited by  
Robert A. Hudson

Words and Music by  
Stephen C. Foster  
Writing as "A Lady"

**Andantino**



8 B $\flat$  B $\flat$  E $\flat$  E $\flat$  B $\flat$ /F

My hopes have de - part - ed for - ev - er. \_\_\_\_\_ My vis - ion of  
They saw that my life was de - cay - ing. \_\_\_\_\_ They knew that my  
He came, but an - oth - er had ri - fled \_\_\_\_\_ His heart of the

The first system of the song features a vocal line and a piano accompaniment. The vocal line starts at measure 8 with a G4 quarter note, followed by a half note G-A-B, a quarter note A-G, and a half note G-F. The piano accompaniment consists of a treble and bass staff. The treble staff has a G4 quarter note, followed by a half note G-A-B, a quarter note A-G, and a half note G-F. The bass staff has a G2 half note, followed by a half note G-A-B, a quarter note A-G, and a half note G-F. The piece concludes with a G4 quarter note in the treble and a G2 half note in the bass.

14 F F7 B $\flat$ (omit 5) B $\flat$  B $\flat$  E $\flat$

true love is o'er. \_\_\_\_\_ My heart shall a - wak - en, ah! nev - er. \_\_\_\_\_  
stay would be brief, \_\_\_\_\_ And still, though my spir - it was stray - ing, \_\_\_\_\_  
love once my own. \_\_\_\_\_ I grieved, but my an - guish was sti - fled \_\_\_\_\_

The second system of the song features a vocal line and a piano accompaniment. The vocal line starts at measure 14 with a G4 quarter note, followed by a half note G-A-B, a quarter note A-G, and a half note G-F. The piano accompaniment consists of a treble and bass staff. The treble staff has a G4 quarter note, followed by a half note G-A-B, a quarter note A-G, and a half note G-F. The bass staff has a G2 half note, followed by a half note G-A-B, a quarter note A-G, and a half note G-F. The piece concludes with a G4 quarter note in the treble and a G2 half note in the bass.

## My Hopes Have Departed Forever

20 E $\flat$  B $\flat$ /F F F7 B $\flat$ (omit 5) F7

— There's joy for my bo - som no more. The ro - ses that  
 — I told not a word of my grief. No whis - per re -  
 — And shrank from his cold for - mal tone. The sun is now

26 F7 B $\flat$  B $\flat$  F7 F7 B $\flat$

crowned me are blight-ed. The gar - land I cher-ished is dead.  
 vealed my de - ceiv - er. No ear heard me sigh or com - plain.  
 sink - ing in bil - lows, That roll in the far dis - tant west,

32 B $\flat$  B $\flat$  E $\flat$  E $\flat$  B $\flat$ /F

— The faith once con - fid - ing - ly plight-ed Is broke, and my  
 — My heart still a - dored its be - reav - er, And longed but to  
 — But morn - ing will shine through the wil - lows, And fine me for -

38 F F7 B<sup>b</sup>(omit 5) B<sup>b</sup> B<sup>b</sup> E<sup>b</sup>

loved one has fled. The faith once con - fid - ing - ly plight-ed  
meet him a - gain. My heart still a - dored its be - reav - er,  
ev - er at rest. But morn - ing will shine through the wil - lows

44 E<sup>b</sup> B<sup>b</sup>/F F7 B<sup>b</sup>

— Is broke, and my loved one has fled.  
— And longed but to meet him a - gain.  
— And find me for - ev - er at rest.

50

50