

# Missa 6 in D

## Kyrie

Johann David Heinichen

*Sostenuto*

Viola

4

8

11

15

19

23

27

Christe

32

38

44

49



# Gloria

*Allegro assai*



7



13



18



24



31



39

*calando sino al piano*



49



56



66



72



77



81 *Cantabile mà Andante*

85



89



93



97



101



105



109



113



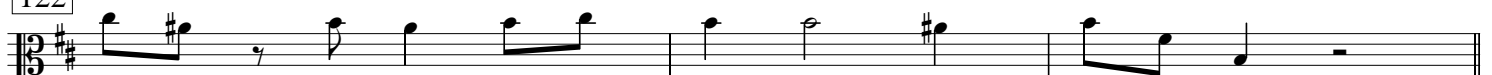
116



119



122



125 Qui tollis

Musical notation for measure 125, featuring a treble clef, a key signature of one sharp (F#), and a 6/4 time signature. The melody consists of quarter notes and rests, starting with a piano (*p*) dynamic marking.

131

Musical notation for measure 131, continuing the melody with quarter notes and rests.

136

Musical notation for measure 136, featuring a treble clef, a key signature of one sharp (F#), and a 6/4 time signature. The melody includes quarter notes and rests.

142

Musical notation for measure 142, featuring a treble clef, a key signature of one sharp (F#), and a 6/4 time signature. The melody consists of quarter notes and rests.

148

Musical notation for measure 148, featuring a treble clef, a key signature of one sharp (F#), and a 6/4 time signature. The melody consists of quarter notes and rests.

154

Musical notation for measure 154, featuring a treble clef, a key signature of one sharp (F#), and a 6/4 time signature. The melody includes quarter notes and rests, with a forte (*f*) dynamic marking.

162

Musical notation for measure 162, featuring a treble clef, a key signature of one sharp (F#), and a 6/4 time signature. The melody includes quarter notes and rests, with a piano (*p*) dynamic marking.

Quoniam  
Andante con moto

169

Musical notation for measure 169, featuring a treble clef, a key signature of one sharp (F#), and a common time signature. The melody includes eighth notes and rests, with piano (*p*) and forte (*f*) dynamic markings.

175

Musical notation for measure 175, featuring a treble clef, a key signature of one sharp (F#), and a common time signature. The melody includes eighth notes and rests, with a piano (*p*) dynamic marking.

180

Musical notation for measure 180, featuring a treble clef, a key signature of one sharp (F#), and a common time signature. The melody includes eighth notes and rests.

186

Musical notation for measure 186, featuring a treble clef, a key signature of one sharp (F#), and a common time signature. The melody includes eighth notes and rests, with forte (*f*) and piano (*p*) dynamic markings.

192

Musical notation for measure 192, featuring a treble clef, a key signature of one sharp (F#), and a common time signature. The melody includes eighth notes and rests.

198



203



208

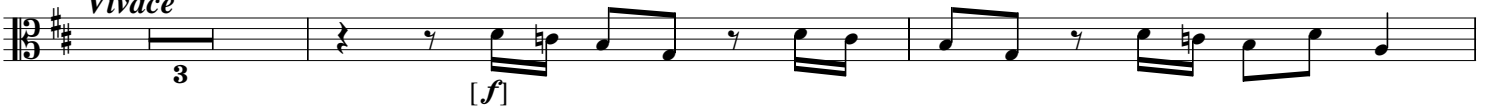


212



218

**Cum Sancto Spiritu**  
*Vivace*



223



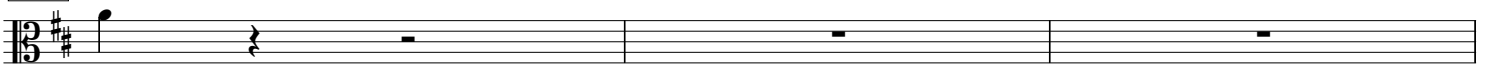
227



230



233



236



239



242

