



GRAINGER

BRITISH
FOLK-MUSIC
SETTINGS

Nr. 22

“Country Gardens”

Piano Solo

Price, 60 cents, net



(In U. S. A.)

G. SCHIRMER, INC., NEW YORK

“Country Gardens”

"COUNTRY GARDENS"

English Morris Dance Tune

The dance melody on which this piano setting of mine is based was collected from traditional sources by Cecil J. Sharp and is published in "Morris Dance Tunes" by Cecil J. Sharp and Herbert C. Macilwaine (Novello & Co., Ltd., London), and in "The Morris Book" by Cecil J. Sharp and Herbert C. Macilwaine (Novello & Co., Ltd., London).

The traditional tune is as follows:

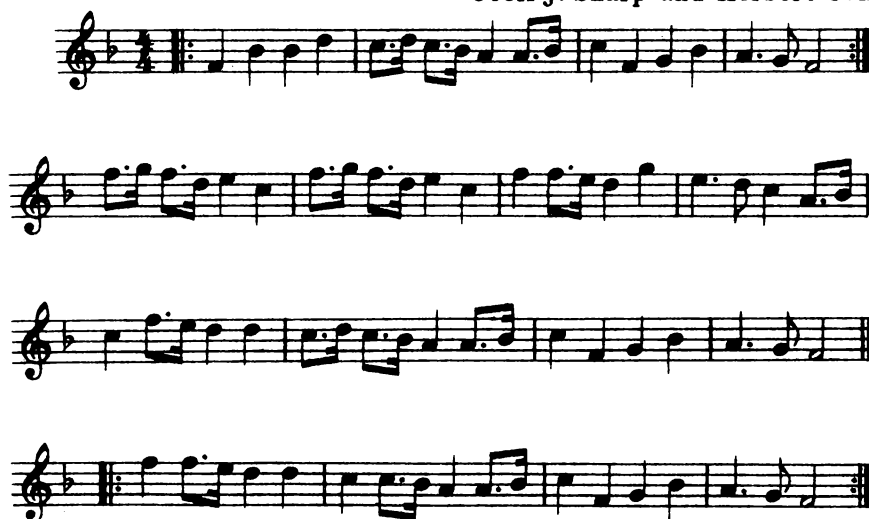
"Country Gardens"

Handkerchief Dance

(Morris Dance Tunes, Set 1, No. 3)

Collected and arranged by
Cecil J. Sharp and Herbert C. Macilwaine

M.M. $\text{♩} = 92$



My use of the same has very kindly been sanctioned by Mr. Cecil J. Sharp and Novello & Co., Ltd., London.

PERCY ALDRIDGE GRAINGER.

New York City, Nov., 1918.

Lovingly and reverently dedicated to the memory of Edvard Grieg

Nr 22. "Country Gardens"

(By kind permission of Novello & Co., Ltd.)

* English Morris Dance Tune

* See Morris Dance Tunes (Novello & Co., Ltd.) and The Morris Book (Novello & Co., Ltd.) both by Cecil J. Sharp and Herbert C. Macilwaine.

Collected by

Cecil J. Sharp

and set for piano by

Rough-sketches for room-music about 1908
Worked out for piano, spring, 1918

PERCY ALDRIDGE GRAINGER

Birthday-gift,
mother, July 3, 1918

Fairly fast (M.M. ♩ = about 96) and with a leisurely swing

The top notes louder and sharper than the rest

Piano

mp R.H. detached
L.H. short

p

*ted. ** *ted. ** *ted. ** *ted. ** *ted. ** *ted. ** *ted. **

*ted. ** *ted. ** *ted. ** *ted. ** *ted. ** *ted. ** *ted. **

or

ff

The lower voice of the right hand slightly louder than the top voice

very short

p

*Red. * Red. * Red. **

Bring out the lower voice of the R.H.

louden

ff

f

*Red. * Red. * Red. * Red. * Red. * Red. * Red. **

Very gently and smoothly

p

pp

pp

*Red. * Red. * Red. * Red. **

*Red. * Red. * Red. * Red. * Red. * Red. **

The musical score for 'The Red Rover' is presented in a two-staff format. The key signature is one flat (B-flat), and the time signature is 2/4. The melody is written in the treble clef, and the bass line is in the bass clef. The score is divided into four measures. The first measure contains a treble staff with a melody of eighth and sixteenth notes, and a bass staff with a simple accompaniment. The second measure continues the melody and accompaniment. The third measure features a more complex bass line with triplets and a 'violently' dynamic marking. The fourth measure concludes the piece with a final chord in the treble and a simple bass line. The lyrics 'The Red Rover' are written below the bass staff, with asterisks indicating the placement of the words.

or

very sharp

ff

sff *sff*

violently wrenched

*ped. ped. ped. ped. ped. ped. ped. ped. ped. ped. ped. **

f

f

*ped. * ped. * ped. * ped. * ped. * ped. * ped. **

p

3 5 3 1 2 5 2 1

3 4 3 4 3 4

*ped. * ped. * ped. * ped. * ped. **

ff *sf sf* *fff violently*

Ped. * *Ped.* * *Ped.* * *Ped.* * *Ped.* * *Ped.* * *Ped.* * *Ped.* * *Ped.* * *Ped.* *

or

Top notes sharp

mp *wrenched but short (no pedal)*

Ped. * *Ped.* * *Ped.* *

sf sf *louden hugely* *mp* *mf* *f* *ff*

Ped. * *Ped.* * *Ped.* * *Ped.* * *Ped.* * *Ped.* * *Ped.* * *Ped.* *

Slow off

f detached and heavy louden steadily *fist* *sff* *sfff* *ffff*

Ped. * *Ped.* * *Ped.* * *Ped.* * *Ped.* * *Ped.* * *Ped.* * *Ped.* *

Written out,
Fort Jay, Governor's Island, N.Y.
June 29, 1918



IN A NUTSHELL



Suite for Pianoforte

(originally composed for Piano and Orchestra)

by PERCY GRAINGER

SUITE: "IN A NUTSHELL"

№ 1. ARRIVAL PLATFORM HUMLET

(No. 10-124 & 125, 126-128, 129-130)

Awaiting arrival of belated train bringing one's sweetheart from foreign parts; great fun! The sort of thing one hums to oneself as an accompaniment to one's tramping feet as one happily ascends, paces up and down the arrival platform.

for piano

by

PERCY ALDRIDGE GRAINGER

WITH HEALTHY AND SOMEWHAT FIERCE "GO" J. about 100

mp somewhat perilly

Copyright, 1916, by Percy Grainger
International Copyright Secured

SUITE: "IN A NUTSHELL"

№ 2. "GAY BUT WISTFUL"

Tune in a popular London Style

(For my dear friend, Edward J. de Coppel)

for piano

by

PERCY ALDRIDGE GRAINGER

N.B. All big stretches can be harped (played *arpeggio*) at will

Gracefully flowing M.M.J. about 100
Top notes to the fore

Copyright, 1916, by Percy Grainger
International Copyright Secured

SUITE: "IN A NUTSHELL"

№ 3. "PASTORAL"

(For my dear friends in art and thought, Cyril and Ethel)

for piano

by

PERCY ALDRIDGE GRAINGER

N.B. All big stretches can be harped (played *arpeggio*) at will

Restful and dreamy, but wayward in time. Begin J. about 60

gently, as if from afar
ppp

Copyright, 1916, by Percy Grainger
International Copyright Secured

SUITE: "IN A NUTSHELL"

№ 4. "THE GUM-SUCKERS" MARCH

(For Henry and Alice Plunk, with love)

for piano

by

PERCY ALDRIDGE GRAINGER

N.B. All big stretches can be harped (played *arpeggio*) at will

Fast M.M.J. between 110 and 120

Gaily
mp

Copyright, 1916, by Percy Grainger
International Copyright Secured