



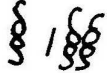
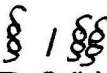
Nestbeschmutzung

für Klavier solo

Christian Stark – August 2012 – Wallau

Explanatory note (translation from p. I):

Part A begins with the tempo indication  ~ 94-98. From the beginning until the end of the section in b. 24 a periodic accelerando is to be executed up to the tempo indication in b. 24 ( ~ 184-188).

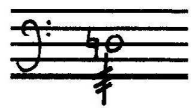
D.C. dal  - The part from  is played again in whole, repetitions included. After replaying the indicated section move on (until the next "D.C." indication).

Anmerkungen & Legende:

Der Teil A beginnt im Tempo ♩ ~ 94-98. Von Beginn an bis zum Ende des Abschnitts in T. 24 ist ein kontinuierliches accelerando auszuführen bis zum in T. 24 angegebenen Tempo von ♩ ~184-188.

D.C. dal $\frac{6}{8}$ / D.C. dal $\frac{6}{8}$ - Der Teil des Stückes ab $\frac{6}{8}$ / $\frac{6}{8}$ ist in seiner Gesamtheit, inklusive etwaiger Wiederholungen, erneut zu spielen. Am Ende des zweiten Spielvorgangs wird weitergespielt (ggf. bis zur nächsten D.C.-Anweisung).

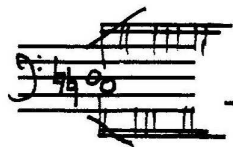
- △ - kurze Fermate / short hold
- ∞ - lange Fermate / long hold



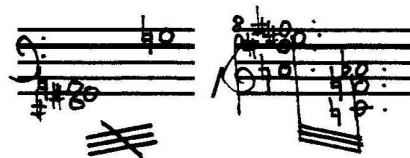
- regelmäßiges Tremolo (Repetitionen) / periodic tremolo



- unregelmäßiges Tremolo (Repetitionen) / aperiodic tremolo



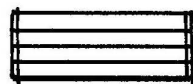
- asynchrones, unregelmäßiges Tremolo / asynchronous, aperiodic tremolo



- unregelmäßiges/regelmäßiges Tremolo zwischen zwei Klängen /
aperiodic / periodic tremolo between two sounds

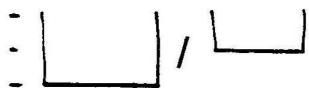
①c/③c - linkes Pedal niederdrücken / linkes Pedal aufheben /
press / lift left pedal

__9-11''__



- Der markierte Teil ist außerhalb des Grundtempos in der vorgegebenen Zeit zu spielen. /
Marked part to be played out of tempo indication in the given time.

IN TEMPO - Wieder im Grundtempo / back in tempo



- Rechtes Pedal im markierten Bereich ganz/zur Hälfte niederdrücken /
press right pedal in the section indicated wholly / in half



- Rechtes Pedal über den markierten Bereich allmählich hinzunehmen/aufheben /
press / lift right pedal gradually in the indicated section

Dauer: ca. 8'45''

(A ~ 3'20'' ; B ~ 0'30'' ; C ~ 2'00'' ; D ~ 2'00'' ; E ~ 0'30'' ; F ~ 0'25'')

A [~ 94-98 - poco a poco acc. (siehe Anmerkung!)]

NESTBESCHMÜTZUNG

© Christian Stark, August 2012

3x

2x

non legato sempre

7

trattillo sempre, non legato

D.C. dal 5

D.C. dal 5

14

— 3x —

Handwritten musical score for measures 14-18. The score consists of three staves. The first staff is in treble clef, the second in treble clef, and the third in bass clef. The music includes various notes, rests, and dynamic markings such as "poco cresc.", "D.C. dal §", "pp", and "p". There are also triplets and a "3x" repeat sign above the first staff.

19

([~ 184-188)
la 2da volta

Handwritten musical score for measures 19-23. The score consists of three staves. The first staff is in treble clef, the second in treble clef, and the third in bass clef. The music includes various notes, rests, and dynamic markings such as "D.C. dal §", "pp", and "mp". There are also triplets and a "2" marking below the first staff.

B A TEMPO (L ~ 94-98)

C L'ISTESSO TEMPO (L ~ 94-98)

25 la melodia martellato 3X 5X

sub. fff
fff
ff
mp
mp < mf

=

33

9-11"

f
pp
pp poss.
fpp unregelmäßige, aber dicke Repetitionen
fpp

IN TEMPO

38

4x ————— 2x —————

Handwritten musical score for measures 38-41. The score is written on four staves. The top two staves are in treble clef, and the bottom two are in bass clef. The music features various dynamics (p, pp, sub. fff, ff, mp) and articulations (trills, slurs). Above the staves, there are markings for "4x" and "2x" with brackets, and a "5" with a bracket. Measure numbers 38, 39, 40, and 41 are indicated at the end of each staff line.

42

Handwritten musical score for measures 42-45. The score is written on four staves. The top two staves are in treble clef, and the bottom two are in bass clef. The music features dynamics (pp, f) and articulations (trills, slurs). Measure numbers 42, 43, 44, and 45 are indicated at the end of each staff line. There are circled annotations "1c" and "3c" in the bass staff.

47

11-17" IN TEMPO

Handwritten musical score for system 47. It features a grand staff with treble and bass clefs. The music includes various dynamics such as *f*, *p*, *mp*, *ff*, *pp*, *mf*, and *ppp*. There are also performance markings like "1C", "3C", and "5" with brackets. The key signature is B-flat major. The system ends with a double bar line and a repeat sign.



52 6-9" IN TEMPO

non legato

Handwritten musical score for system 52. It features a grand staff with treble and bass clefs. The music includes dynamics such as *sub. ff*, *sf*, *sub. p*, and *p*. There are also performance markings like "3C" and "3" with brackets. The key signature is B major. The system ends with a double bar line and a repeat sign.

69

E

6-9" IN TEMPO 2x 3x 2x

Handwritten musical score for page 69, measures 6-9. The score is written for piano, violin, and cello. The piano part includes dynamics such as *ff*, *mp*, *ppp*, and *p leggiero*. A marking *D.C. dal 66* is present. The violin and cello parts also feature dynamics like *ff*, *mp*, and *ppp*. The score includes various musical notations such as slurs, accents, and repeat signs.

F LANGSAMER (L ~ 66-70)

76

Handwritten musical score for page 76, measures 66-70. The score is written for piano, violin, and cello. The piano part includes dynamics such as *sub. ff*, *sf*, *sff*, and *sfff*. The violin and cello parts also feature dynamics like *sf*, *sff*, and *sfff*. The score includes various musical notations such as slurs, accents, and repeat signs.

Wallace 28.08.2012