

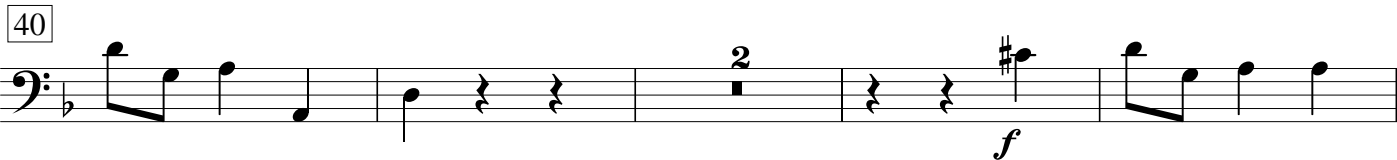
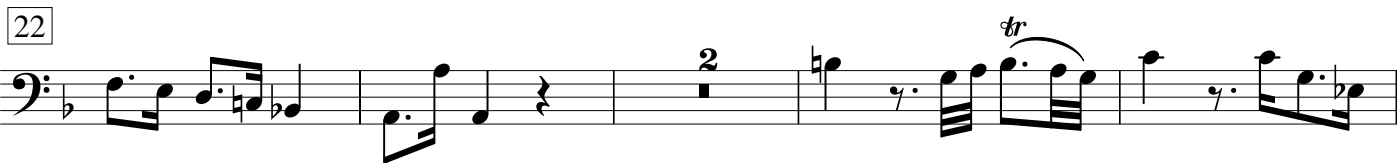
Kyrie

Missa

Johann Gottlieb Naumann

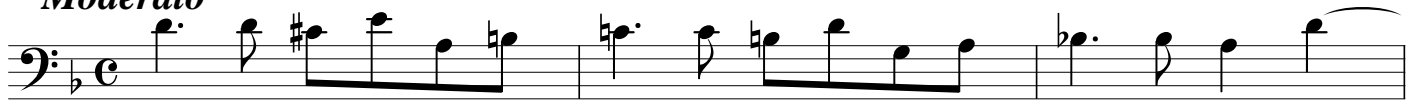
Adagio

Violoncello
Bassi

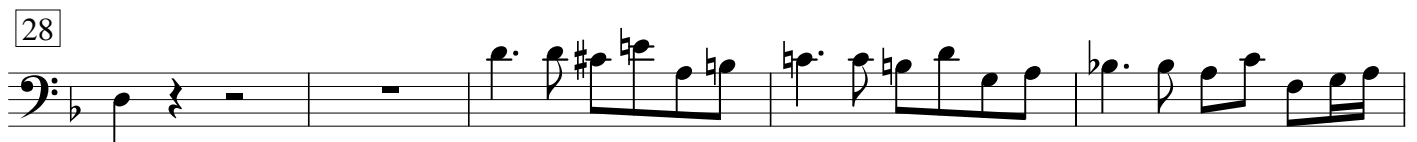
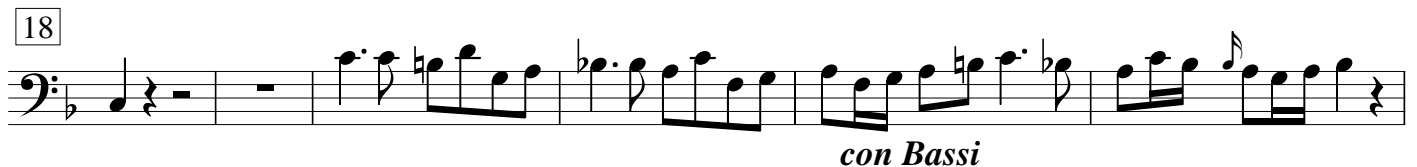
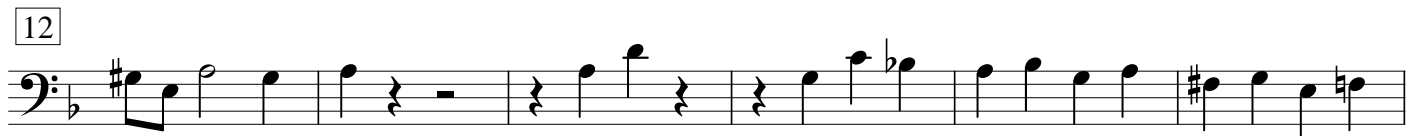


Kyrie

Moderato



Violoncello



4 Gloria

Allegro con spirito

First musical staff of the Gloria, starting with a bass clef, a key signature of two sharps (F# and C#), and a 3/4 time signature. The staff contains several measures of music, including a quarter rest followed by a series of eighth notes.

Bassi

7

Second musical staff, starting with measure 7. It continues the bass line with various rhythmic patterns and rests.

12

Third musical staff, starting with measure 12. It features a series of eighth notes and a dynamic marking of *p* (piano).

18

Fourth musical staff, starting with measure 18. It contains a quarter rest followed by eighth notes and a dynamic marking of *f* (forte).

24

Fifth musical staff, starting with measure 24. It includes a series of eighth notes and a dynamic marking of *f*.

29

Sixth musical staff, starting with measure 29. It features a series of eighth notes and a dynamic marking of *f*.

41

Seventh musical staff, starting with measure 41. It contains a series of eighth notes and a dynamic marking of *f*.

47

Eighth musical staff, starting with measure 47. It includes a series of eighth notes and a dynamic marking of *f*.

55

Ninth musical staff, starting with measure 55. It contains a series of eighth notes and a dynamic marking of *f*.

61

Tenth musical staff, starting with measure 61. It features a series of eighth notes and a dynamic marking of *f*.

66

Eleventh musical staff, starting with measure 66. It contains a series of eighth notes and a dynamic marking of *f*.

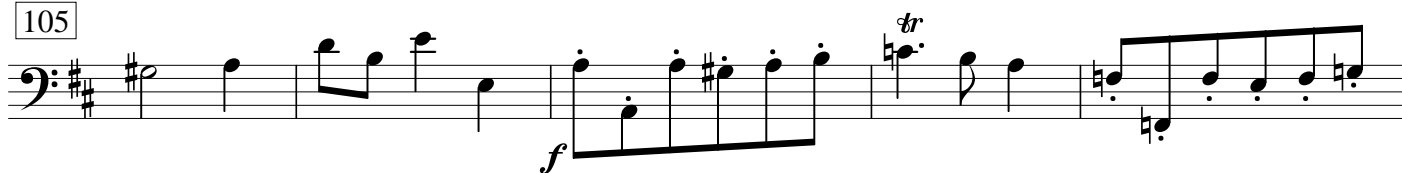
80



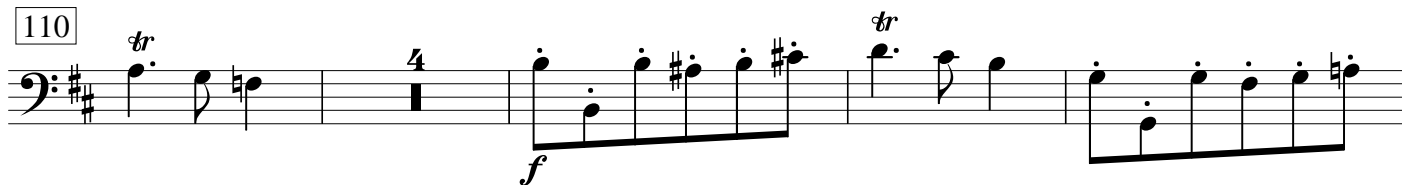
92



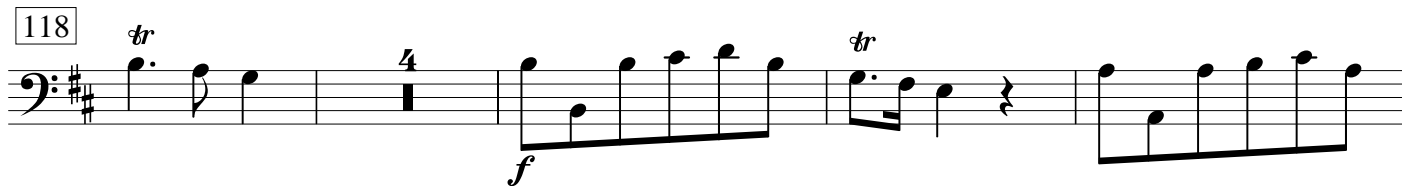
105



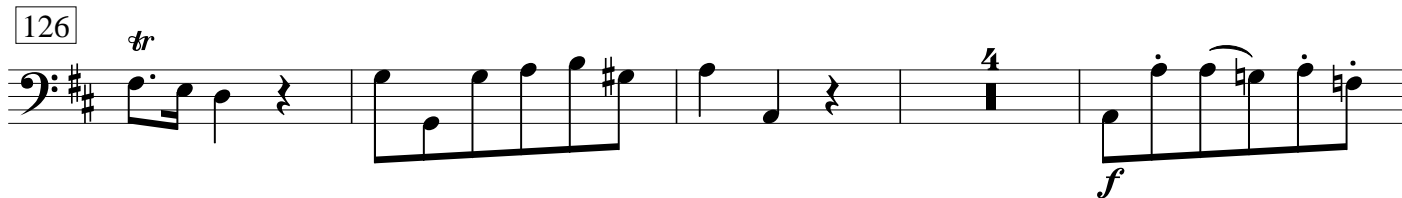
110



118



126



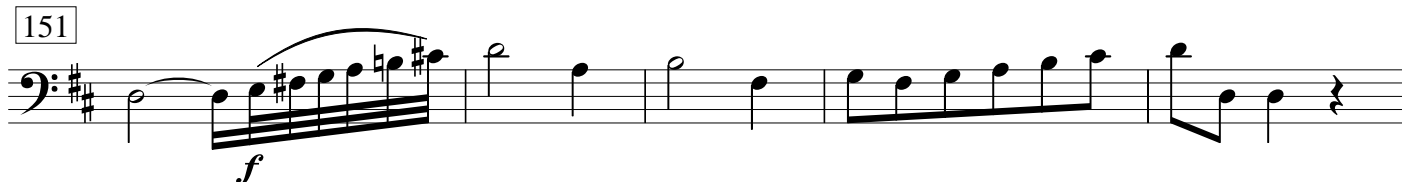
134



143



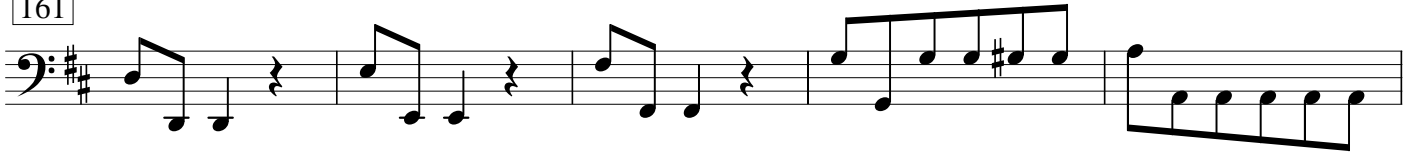
151



156



161



166



180



186



192



197



206



Credo

Allegro

First musical staff, starting with a bass clef, a key signature of two sharps (F# and C#), and a common time signature (C). The staff contains a sequence of eighth and sixteenth notes.

5

Second musical staff, starting with a measure rest. The staff contains a sequence of eighth and sixteenth notes.

9

Third musical staff, starting with a measure rest. The staff contains a sequence of eighth and sixteenth notes.

13

Fourth musical staff, starting with a measure rest. The staff contains a sequence of eighth and sixteenth notes.

17

Fifth musical staff, starting with a measure rest. The staff contains a sequence of eighth and sixteenth notes.

21

Sixth musical staff, starting with a measure rest. The staff contains a sequence of eighth and sixteenth notes.

27

Seventh musical staff, starting with a measure rest. The staff contains a sequence of eighth and sixteenth notes.

32

Eighth musical staff, starting with a measure rest. The staff contains a sequence of eighth and sixteenth notes.

37

Ninth musical staff, starting with a measure rest. The staff contains a sequence of eighth and sixteenth notes.

42

Tenth musical staff, starting with a measure rest. The staff contains a sequence of eighth and sixteenth notes.

47

Eleventh musical staff, starting with a measure rest. The staff contains a sequence of eighth and sixteenth notes.

53



57

poco Adagio

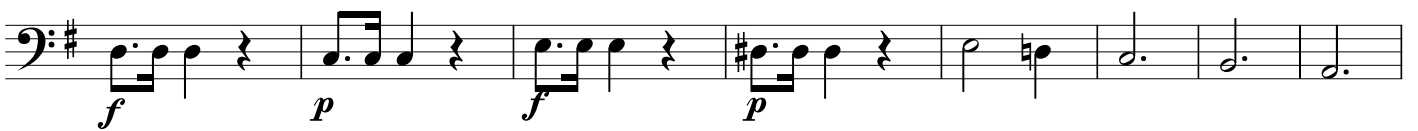
62



71



79



87



95

come prima

99



103



107



111



118



123



128



134



141



146



150



158



163



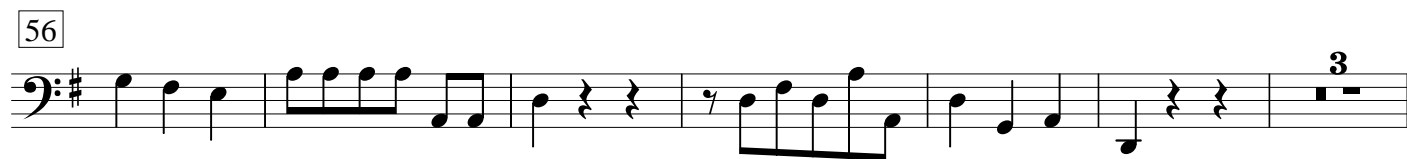
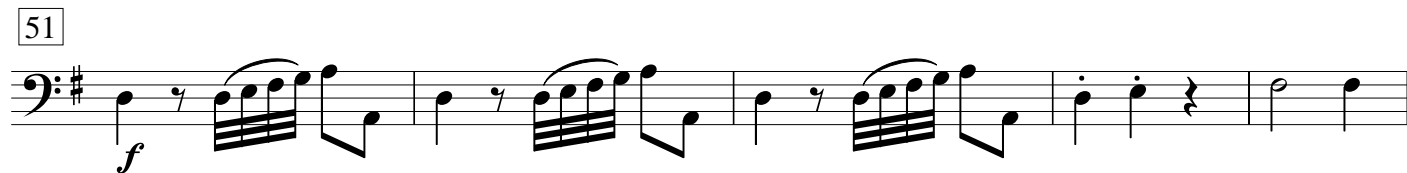
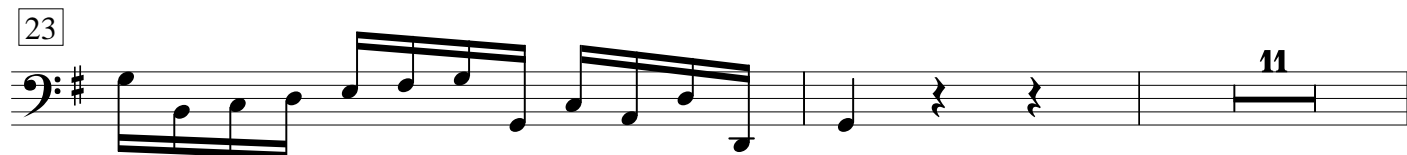
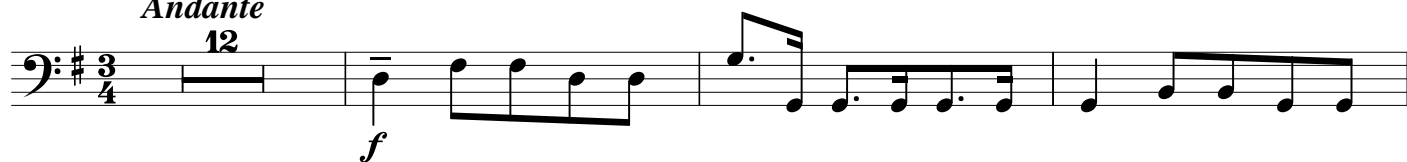
167



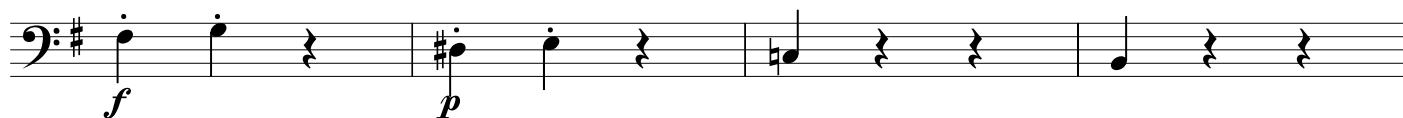
175



Offertorium

Andante

65



69



84



88



98



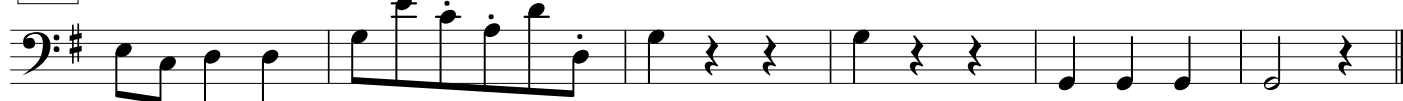
103



107

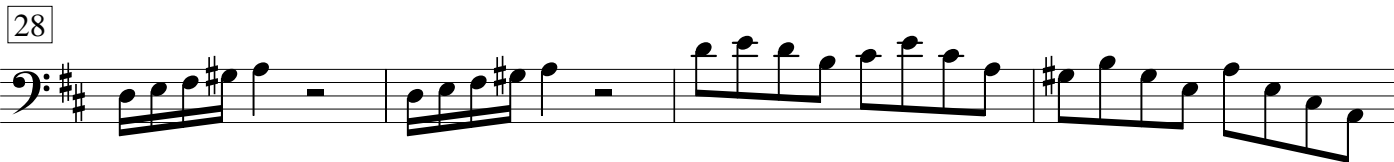
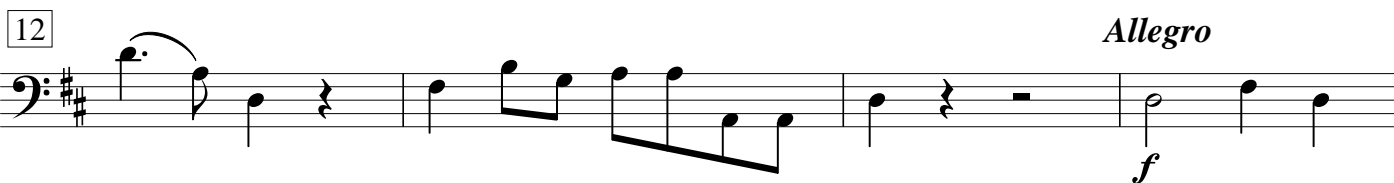
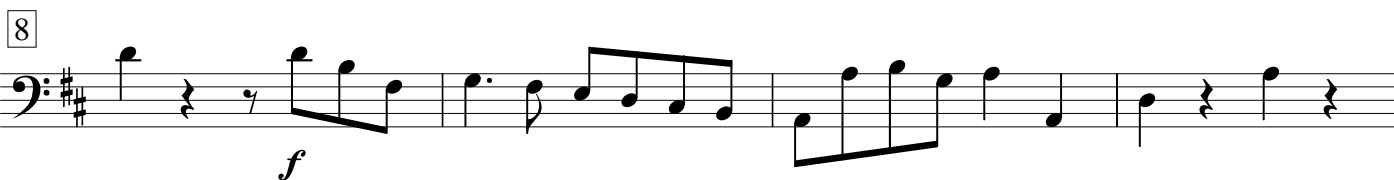
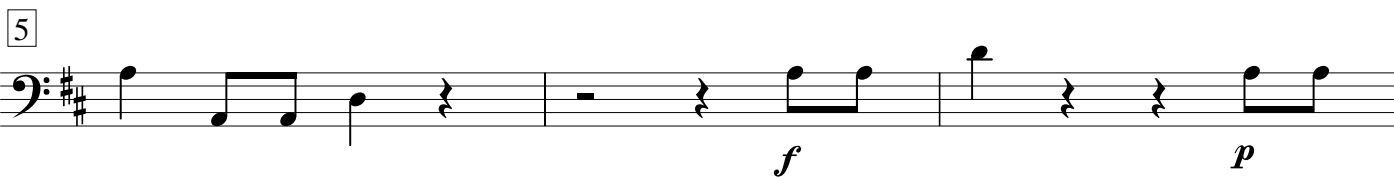


111



12 Sanctus

Adagio



Osanna



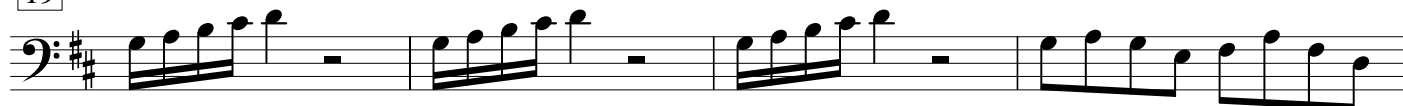
11



15



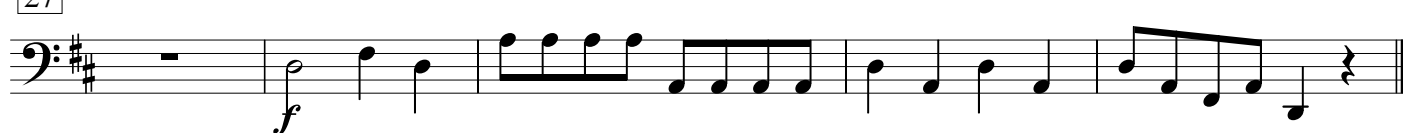
19



23



27



Benedictus

Andante



Violoncelli senza Bassi

27



32



37



42



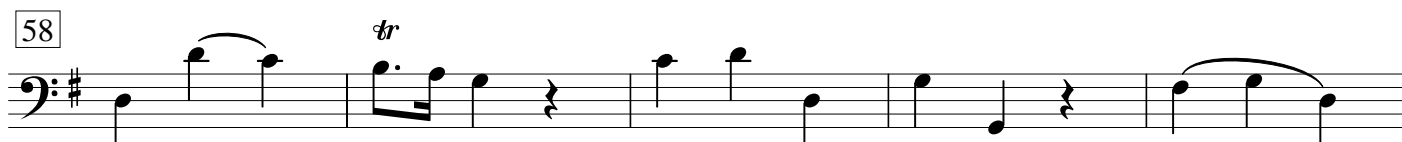
47



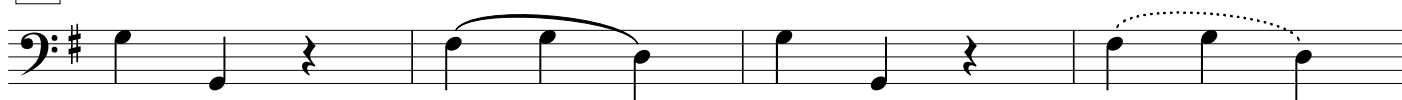
53



58



63



67



72



Osanna ut supra

Agnus Dei

Andante



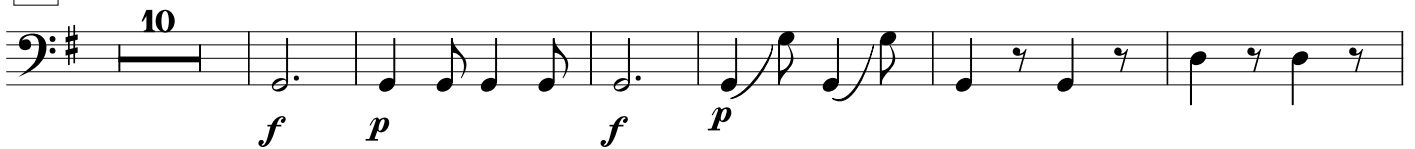
Violoncello senza Basso

13



con Bassi

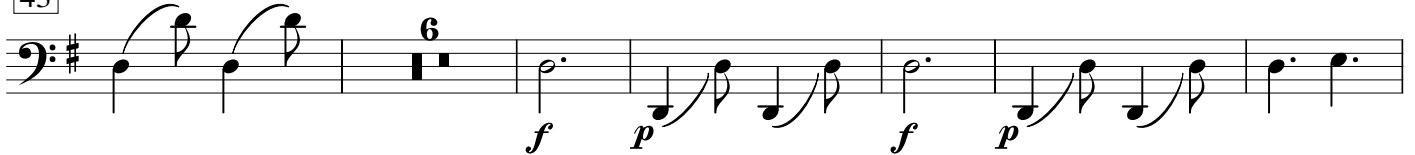
20



36



43



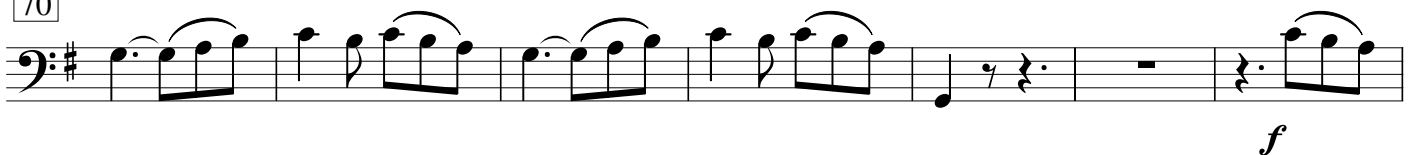
55



61



70



77



86

