

Fux, Johann Josef (1660-1741)

BRD DS Mus.ms 329

Laudate pueri./A.T.B.2.Violini./Fux./ (g-moll)

Tenore Laudate pueri Do-minum

Ms. ca.1700.

19 x 15 cm.

9 St.: A, T, B, vl 1, 2, vla, tenor-vla, vlne, org.
je 1 Bl., org 2 Bl.

Alte Sign.: N^o.234.

Vermerk: D.

Nicht im Themat. Kat. Köchel.



Mus ms 329

Landes-Bibliothek

Mus.

329

Bd.

Darmstadt

Laudate pueri.

A. T. B. z. Violini.

Fux.

D.

N^o. 254.



ORGANO.

Handwritten musical score for organ, consisting of seven staves. The notation includes various rhythmic values (e.g., 6, 76, 43) and accidentals (sharps, flats). The lyrics are written below the staves:

Laudate pueri.

qui habitare.

Gloria.

Handwritten musical notation on a single staff, featuring rhythmic values (6, 76, 43) and accidentals.

Handwritten musical notation on a single staff, featuring rhythmic values (6, 76, 43) and accidentals.

Five empty musical staves on the right page of the manuscript.



Laudate nomen Domini, à solis ortu usq; ad occa-

sum, laudabile nomen Domini, et super coelos gloria ejus, qui in

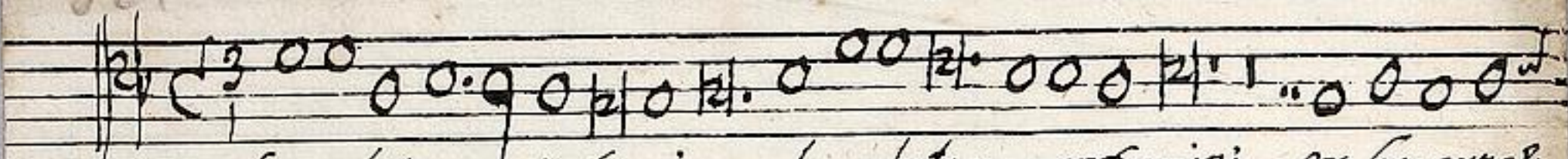
altis habitat, et humilia respicit in caelo & in terra, ut collocet

eum cum principib; cum principib; populi sui, matrem filio-

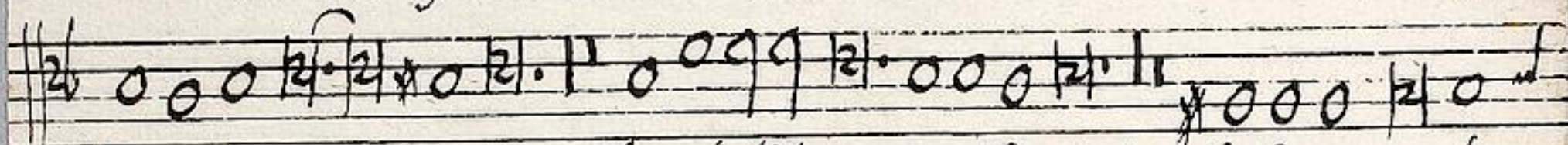
rum latentem, gloria Patri & filio, & spiritui san-cto, sicut

erat in principio, & nunc & semper, & in secula secula

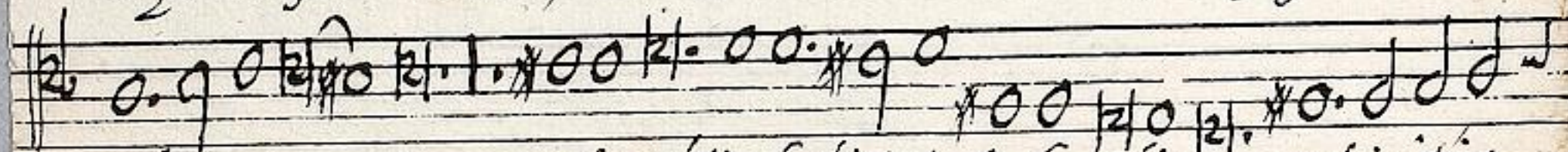
lorum, A - men, A - men.



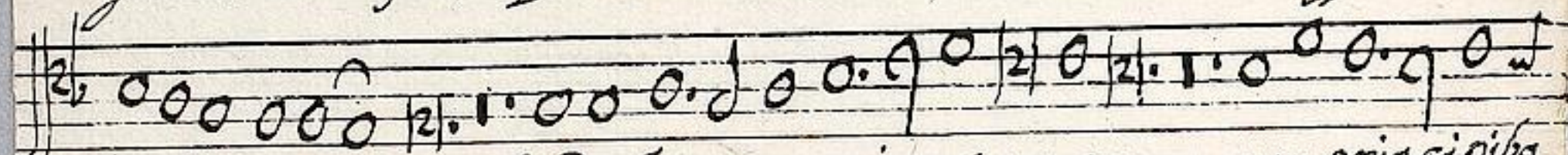
Laudate pueri Dominum, laudate nomen Domini, ex hoc nunc &



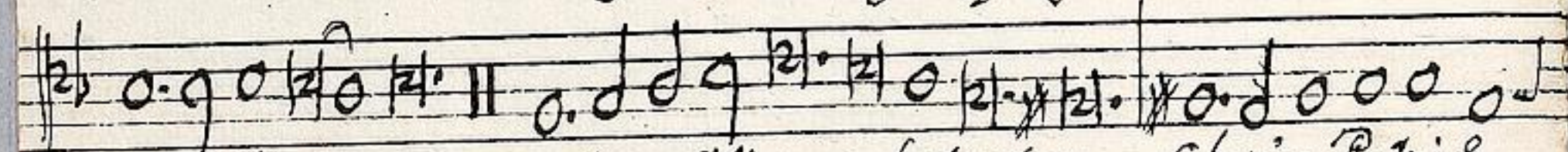
usque in se- culum, laudabile nomen Domini, & super coelos



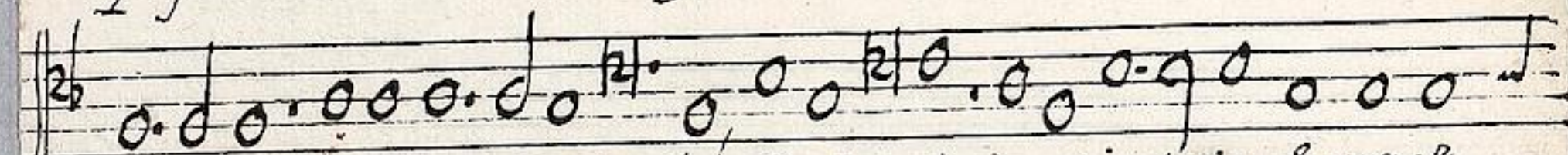
gloria e- jus, qui in altis habitat, & humilia respicit in



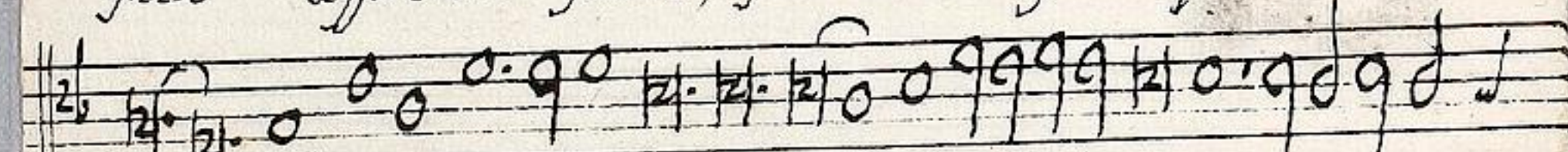
caelo & in terra, & de stercore erigens pauperem, cum principibz



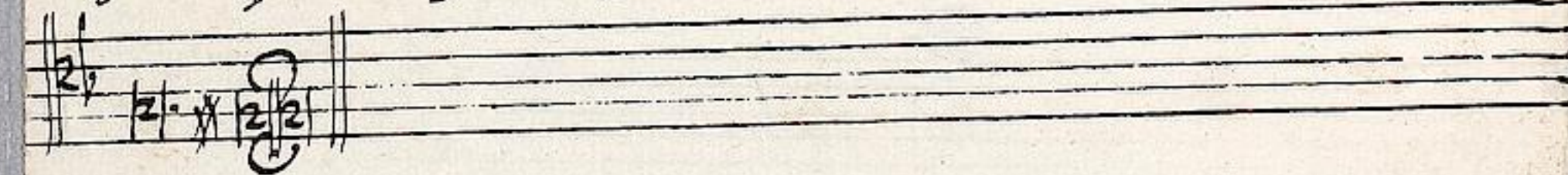
populi su- i, matrem filiorum letantem. Gloria Patri &



filio & spiritui sancto, sicut erat in principio, & nunc &



sem- per, & in secula seculo- rum, A- men, a-



men.

Basso.

Laudate pueri. Sit nomen Domini benedictum, ex hoc nunc & usq₃ in secu-

- lum, Excelsus super omnes gentes Domini, quis sicut Dominus Deus

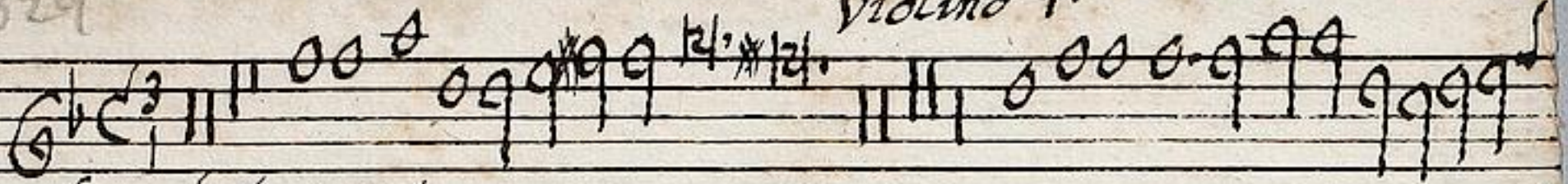
noster, suscitans a terra inopem, qui habitare facit sterilem

in domo, matrem filiorum letantem. Gloria Patri & Filio & spi-

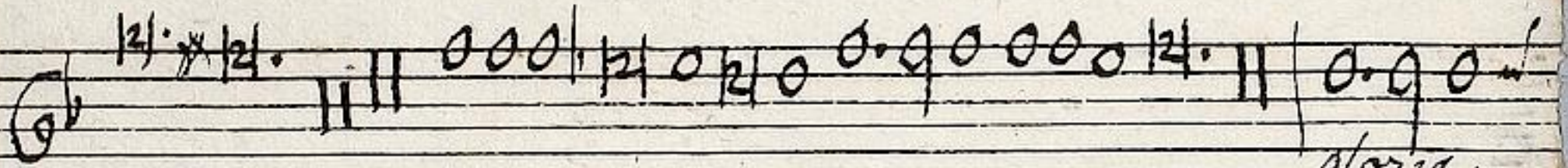
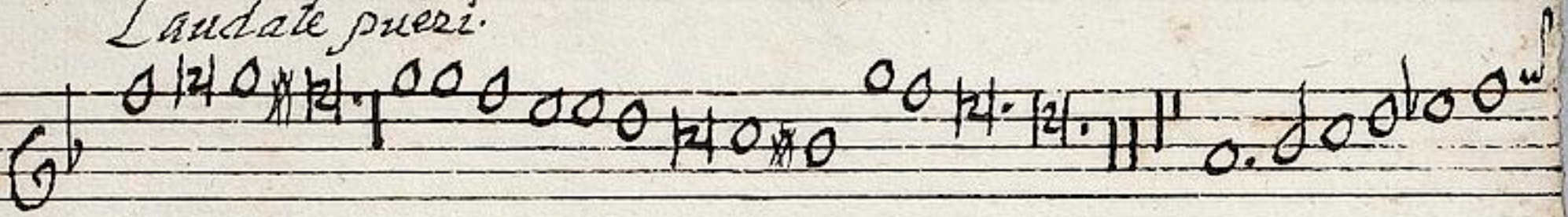
- ritui sancto, sicut erat in principio, & nunc & semper, & in

secula seculorum Amen.

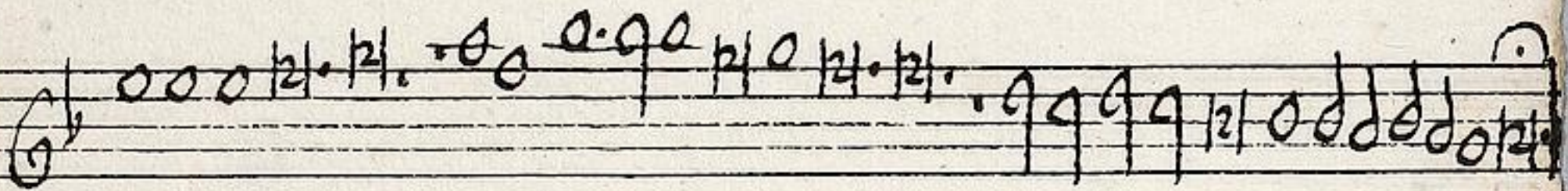
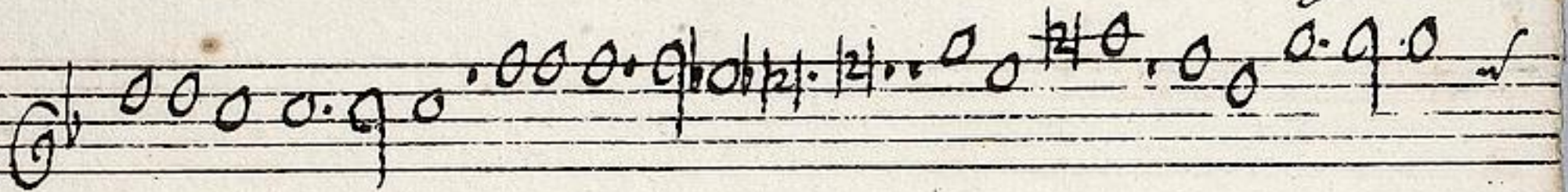
Violino 1.

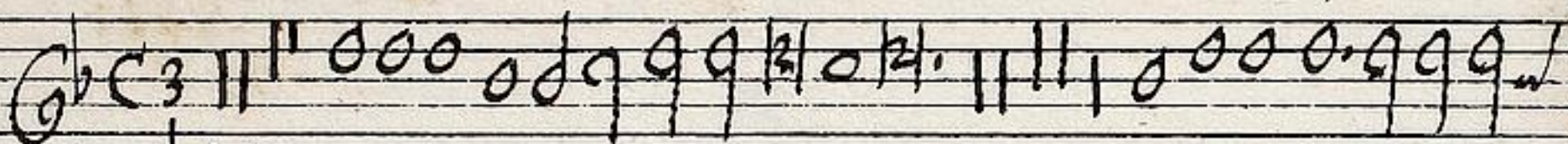


Laudate pueri.

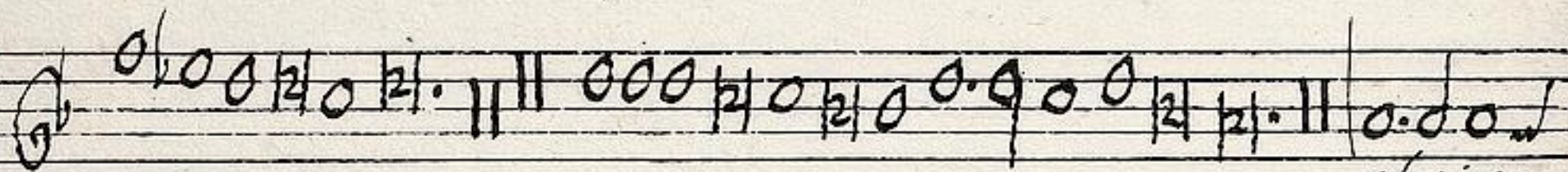
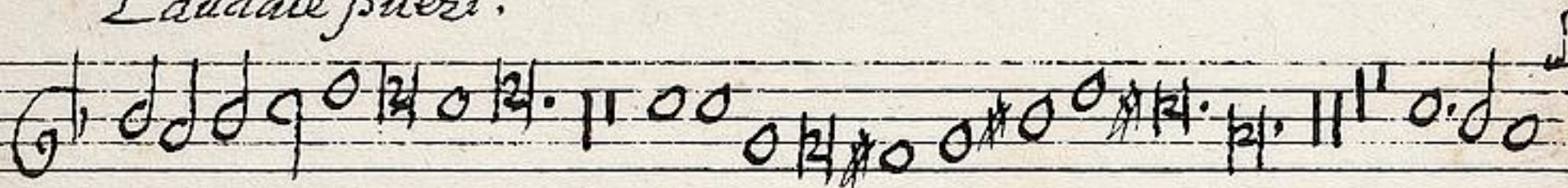


gloria.

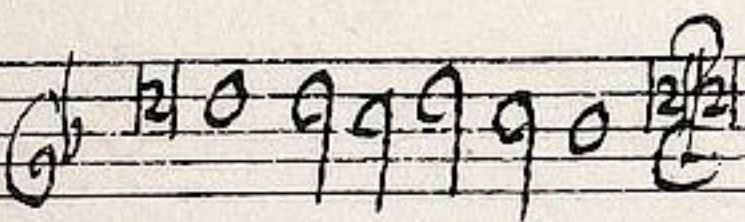
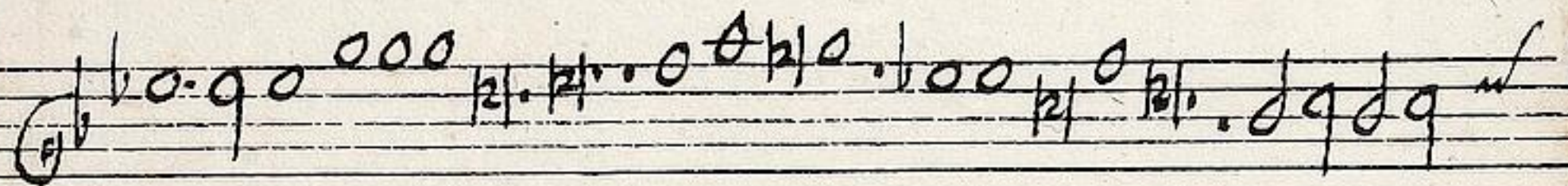
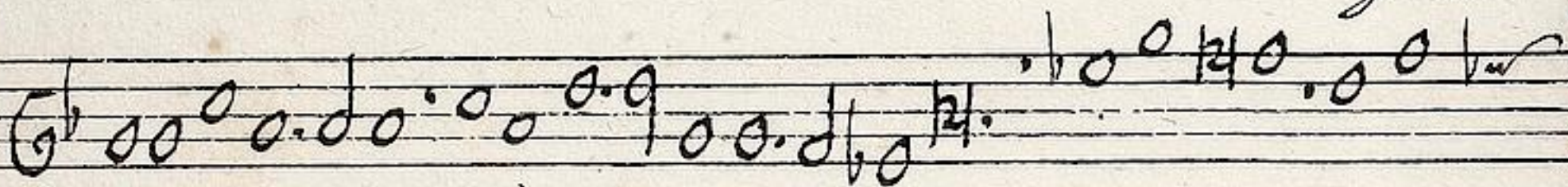




Laudate pueri.



gloria.



329

Alto Viola.

Handwritten musical notation on a single staff. It begins with a treble clef and a common time signature (C). The notation consists of several measures of music, primarily using half notes and quarter notes. There are some markings above the staff, possibly indicating fingerings or dynamics.

Laudate pueri.

Handwritten musical notation on a single staff, continuing the piece. It features a series of notes, including some with stems pointing downwards, and rests.

Handwritten musical notation on a single staff, showing a continuation of the musical line with various note values and rests.

Handwritten musical notation on a single staff. This section includes a double bar line and the word "gloria." written below the staff. The notation continues with several measures of music.

Handwritten musical notation on a single staff, further developing the musical piece.

Handwritten musical notation on a single staff, concluding the piece with a final note and a double bar line.

329

Tenore Viola.

Handwritten musical notation on a single staff. It begins with a treble clef, a key signature of one flat (B-flat), and a 3/4 time signature. The notation consists of several measures of music, primarily using half notes and quarter notes, with some rests.

Laudate pueri.

Handwritten musical notation on a single staff, continuing the piece. It features a variety of note values including half notes, quarter notes, and eighth notes, with some rests.

Handwritten musical notation on a single staff, showing further development of the musical theme with various note values and rests.

Handwritten musical notation on a single staff, including a double bar line and repeat signs, indicating a section of the music.

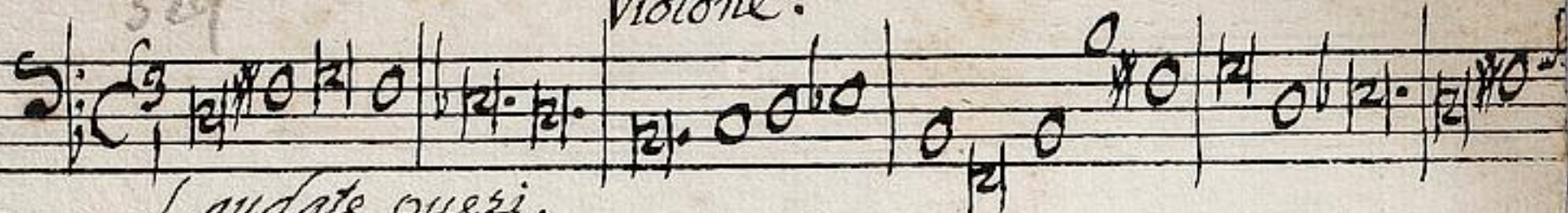
gloria.

Handwritten musical notation on a single staff, continuing the 'gloria' section with various rhythmic patterns.

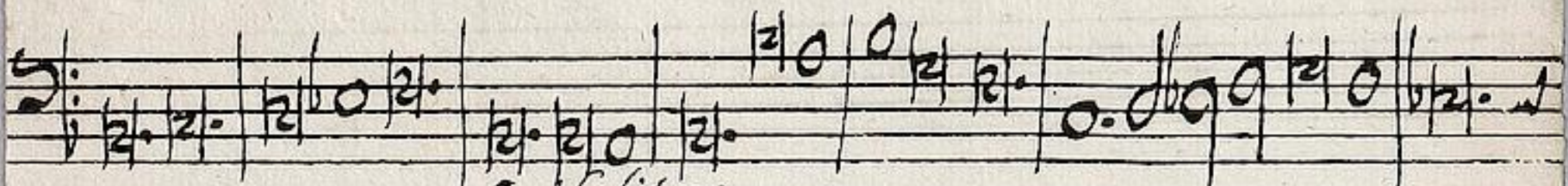
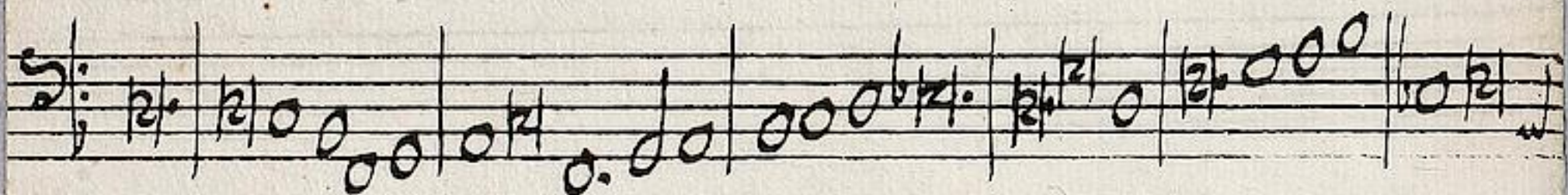
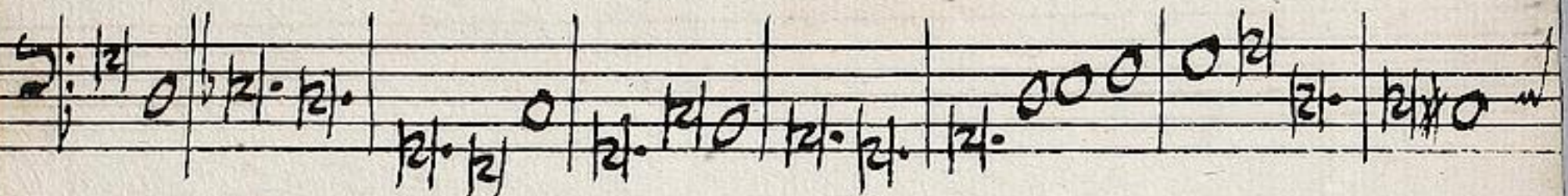
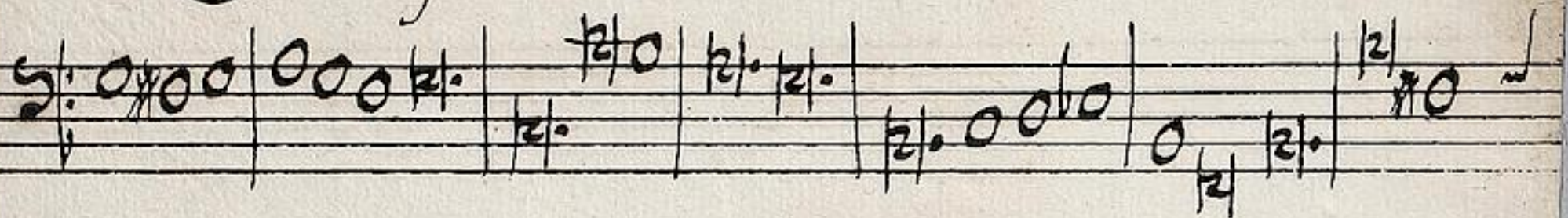
Handwritten musical notation on a single staff, consisting of a few measures of music, possibly a concluding phrase or a specific ornament.

Five empty musical staves, providing space for further notation or serving as a separator between sections.

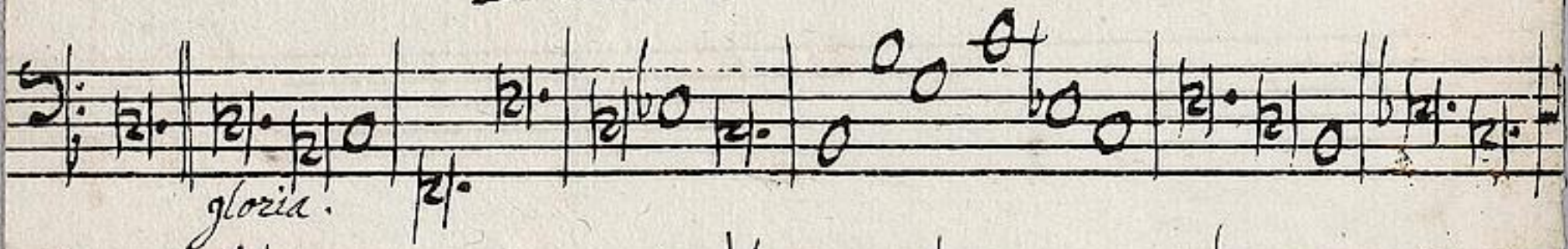
Violone.



Laudate pueri.



In habitare.



gloria.

