

Ouverturen-Suite aus der Oper Issé

Oboe 1

Eingerichtet für 2 Oboen, Englischhorn und Fagott

A. C. Destouches

Ouverture

6

11

16

22

29

35

42

49

56

60

64

Air Rondeau

68 *tr* *tr* *tr*

76 *tr* *tr*

84 **Trio** *tr* *tr* *tr*

92 **Tous** *tr* *tr* *tr*

100 *tr* *tr*

108 **Trio** *tr*

116 **Tous** *tr* *tr*

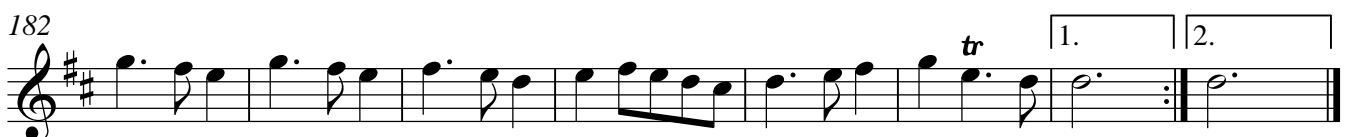
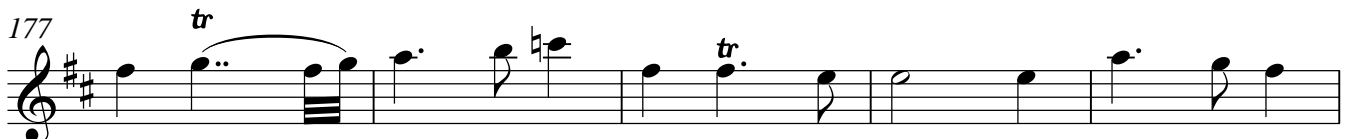
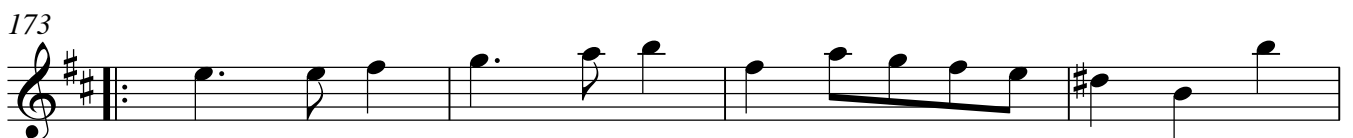
123 *tr*

128 *tr* *tr*

133 Air [1]



160 Air [2]



Canaries

190 Musical notation for measures 190-201 of 'Canaries'. The key signature is two sharps (F# and C#) and the time signature is 3/8. The melody consists of eighth and sixteenth notes with two trills (tr.) marked above the notes.

202 Musical notation for measures 202-213 of 'Canaries'. The key signature is two sharps and the time signature is 3/8. The melody continues with eighth and sixteenth notes and a trill (tr.) marked above a note.

214 Musical notation for measures 214-224 of 'Canaries'. The key signature is two sharps and the time signature is 3/8. The melody continues with eighth and sixteenth notes and a trill (tr.) marked above a note.

225 Musical notation for measures 225-233 of 'Canaries'. The key signature is two sharps and the time signature is 3/8. The melody continues with eighth and sixteenth notes and two trills (tr.) marked above notes. The piece ends with a double bar line and a key signature change to three sharps (F#, C#, G#).

Passepied 1

234 Musical notation for measures 234-244 of 'Passepied 1'. The key signature is three sharps (F#, C#, G#) and the time signature is 3/8. The melody features a series of sixteenth-note runs with two trills (tr.) marked above notes.

245 Musical notation for measures 245-254 of 'Passepied 1'. The key signature is three sharps and the time signature is 3/8. The melody continues with sixteenth-note runs and a trill (tr.) marked above a note.

255 Musical notation for measures 255-265 of 'Passepied 1'. The key signature is three sharps and the time signature is 3/8. The melody continues with sixteenth-note runs and a trill (tr.) marked above a note.

Passepied 2

266 Musical notation for measures 266-274 of 'Passepied 2'. The key signature is three sharps and the time signature is 3/8. The melody features sixteenth-note runs with a trill (tr.) marked above a note.

275 Musical notation for measures 275-282 of 'Passepied 2'. The key signature is three sharps and the time signature is 3/8. The melody continues with sixteenth-note runs and two trills (tr.) marked above notes.

283 Musical notation for measures 283-288 of 'Passepied 2'. The key signature is three sharps and the time signature is 3/8. The melody continues with sixteenth-note runs and a trill (tr.) marked above a note.

D.C. al Fine