

1st Viola Concerto in C min



April 24, 1970

Danny Simpson

THEME I

(A)

Cmin

VIOLA

RT A4 RT A5

IV III III VI

VI

* acc. Full Dim

III VI

VI III

VI RT RT A5

I Eb: ①

IV V I

③

VI ②

④

⑤

⑥

⑦

⑧

⑨

⑩

⑪

⑫

⑬

⑭

⑮

⑯

⑰

⑱

⑲

⑳

㉑

㉒

㉓

㉔

㉕

㉖

㉗

㉘

㉙

㉚

㉛

㉜

㉝

㉞

㉟

㊱

㊲

㊳

㊴

㊵

㊶

㊷

㊸

㊹

㊺

㊻

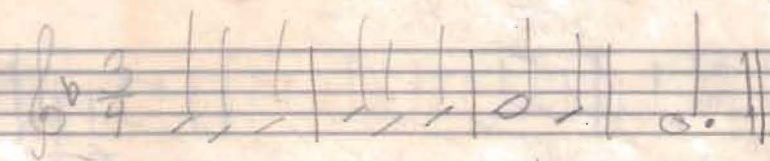
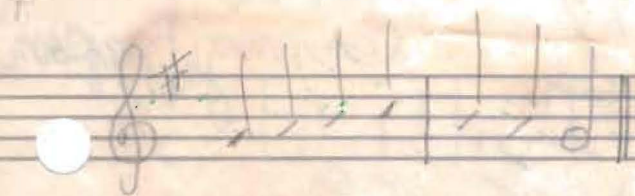
㊼

㊽

㊾

㊿

Danny Simpson



A	B	C	D	E	F	G	H	I	J	K	L	M	N	O	P	Q	R	S	T	U	V	W	X	Y
1	2	3	4	5	6	7	8	9	10	11	12	13	14	15	16	17	18	19	20	21	22	3	4	5
																						<u>6</u>		

1st VIOLA CONCERTO IN C MIN

APRIL 24, 1970
25

Danny Simpson

Handwritten musical score for 1st Viola Concerto in C minor, measures 1 through 14. The score is written on a grand staff (treble and bass clefs) with a key signature of two flats (B-flat and E-flat). The time signature is 4/4. The notation includes various note values, rests, and dynamic markings such as *f* and *p*. A rehearsal mark **A** is present at the beginning of the first measure, and another rehearsal mark **B** is present at the beginning of measure 11. A *Rit* marking is present above measure 10. The score concludes with a double bar line at the end of measure 14.

Empty musical staves for practice or additional notation.

NCA With Motion (approx) "Leaves"

Revision Sept 17, 1971

Handwritten musical score for "Leaves". The score is written on ten staves, organized into five systems of two staves each. The key signature is B-flat major (two flats) and the time signature is common time (C). The first system includes a piano part with a grand staff (treble and bass clefs) and a piano dynamic marking. The second system features a solo section marked "Solo" and a red box containing the number "7". The third system continues the piano part with various musical notations including slurs and ties. The fourth system shows a continuation of the piano part with a large bracket on the right side. The fifth system concludes the piece with a final chord and a large bracket on the right side.

A handwritten musical score on six staves, organized into three systems of two staves each. The notation is in a shorthand style, featuring various note values, rests, and complex groupings of notes. The first staff of each system begins with a clef and a key signature of two flats (B-flat and E-flat). The notation includes many beamed notes, some with stems pointing upwards, and occasional single notes. The second system's first staff has a 4/4 time signature. The third system's first staff has a 4/4 time signature. The notation is dense and appears to be a working draft or a sketch for a piece of music.

Kwameya

Dec 25, 1971

P63

Handwritten musical score for "Kwameya" on page P63, dated Dec 25, 1971. The score is written on ten staves. The first staff is a treble clef with a key signature of two flats (B-flat and E-flat) and a 4/4 time signature. It contains a complex melody with many beamed sixteenth and thirty-second notes, some with accents. Above the first measure of this staff are the numbers "6" and "4". The second staff is a treble clef with a key signature of two flats, containing a melody with some rests and a final measure with a whole note. The third staff is a treble clef with a key signature of two flats, containing a melody with a forte "f" dynamic marking. The fourth staff is a treble clef with a key signature of two flats, containing a melody with many beamed sixteenth and thirty-second notes. The fifth staff is a treble clef with a key signature of two flats, containing a melody with many beamed sixteenth and thirty-second notes. The sixth staff is a treble clef with a key signature of two flats, containing a melody with many beamed sixteenth and thirty-second notes. The seventh staff is a treble clef with a key signature of two flats, containing a melody with many beamed sixteenth and thirty-second notes. The eighth staff is a treble clef with a key signature of two flats, containing a melody with many beamed sixteenth and thirty-second notes. The ninth staff is a treble clef with a key signature of two flats, containing a melody with many beamed sixteenth and thirty-second notes. The tenth staff is a treble clef with a key signature of two flats, containing a melody with many beamed sixteenth and thirty-second notes. The score is written on aged, slightly yellowed paper with three binder holes on the left side.

Concerto in C minor "Lacaya"

Danny Simpson
10/22/70

Handwritten musical score for Concerto in C minor "Lacaya" by Danny Simpson. The score is written on ten staves, organized into five systems of two staves each. The key signature is C minor (three flats) and the time signature is 4/4. The notation includes various musical symbols such as notes, rests, accidentals, and dynamic markings like *f* (forte) and *pp* (pianissimo). The score is written in ink on aged, slightly stained paper. The first system begins with a first ending bracket over the first two measures. The second system features a *f* dynamic marking at the start. The third system includes a *pp* marking and a triplet of eighth notes. The fourth system has a *f* marking and a triplet of eighth notes. The fifth system includes a *pp* marking and a triplet of eighth notes. The score concludes with a final double bar line and repeat sign.

Modulating
left hand

Handwritten musical score for the first system, featuring a grand staff with treble and bass clefs. The notation includes various notes, rests, and dynamic markings. A handwritten note "first swap measure at intro" is written vertically across the middle of the system.

Handwritten musical score for the second system, continuing the composition. It includes a grand staff with treble and bass clefs, showing notes, rests, and dynamic markings.

Handwritten musical score for the third system, continuing the composition. It includes a grand staff with treble and bass clefs, showing notes, rests, and dynamic markings.

Handwritten musical score for the fourth system, continuing the composition. It includes a grand staff with treble and bass clefs, showing notes, rests, and dynamic markings. A handwritten note "Change key at arrival" is written vertically across the middle of the system.

Handwritten musical score, first system. The system consists of three staves. The top staff has a treble clef and a key signature of two flats (B-flat and E-flat). It begins with a whole note chord, followed by a half note, and then a series of eighth notes. The middle staff has a treble clef and a key signature of two flats. It begins with a whole note chord, followed by a half note, and then a series of eighth notes. The bottom staff has a bass clef and a key signature of two flats. It begins with a whole note chord, followed by a half note, and then a series of eighth notes.

Handwritten musical score, second system. The system consists of three staves. The top staff has a treble clef and a key signature of two flats. It begins with a whole note chord, followed by a half note, and then a series of eighth notes. The middle staff has a treble clef and a key signature of two flats. It begins with a whole note chord, followed by a half note, and then a series of eighth notes. The bottom staff has a bass clef and a key signature of two flats. It begins with a whole note chord, followed by a half note, and then a series of eighth notes.

Handwritten musical score, third system. The system consists of three staves. The top staff has a treble clef and a key signature of two flats. It begins with a whole note chord, followed by a half note, and then a series of eighth notes. The middle staff has a treble clef and a key signature of two flats. It begins with a whole note chord, followed by a half note, and then a series of eighth notes. The bottom staff has a bass clef and a key signature of two flats. It begins with a whole note chord, followed by a half note, and then a series of eighth notes.

Handwritten musical score, fourth system. The system consists of three staves. The top staff has a treble clef and a key signature of two flats. It begins with a whole note chord, followed by a half note, and then a series of eighth notes. The middle staff has a treble clef and a key signature of two flats. It begins with a whole note chord, followed by a half note, and then a series of eighth notes. The bottom staff has a bass clef and a key signature of two flats. It begins with a whole note chord, followed by a half note, and then a series of eighth notes.

Handwritten musical score on three systems of three staves each. The notation includes various notes, rests, and dynamic markings like 'p' and 'f'. The first system shows a complex piece of music with many beamed notes and rests. The second system continues the piece, with some notes marked with 'f' and 'p'. The third system shows the beginning of a new section, with a few notes and rests on the first two staves, and the third staff being empty.

Three empty musical staves with treble, alto, and bass clefs, ready for notation.

VLA With Motion (approx) ³⁰ "Kaleidoscope"

Revision Sept 17, 1971



Handwritten musical score for VLA (Violoncello) and Piano. The score is written on multiple staves, showing complex rhythmic patterns and dynamics.

Key markings and annotations:

- PiAND** (Piano) and **mf** (mezzo-forte) dynamics are indicated.
- Solo** marking is present above a staff.
- A red box containing the number **7** is visible.
- A red line connects a note in the lower staff to a note in the upper staff.
- A red question mark **?** is written above a note in the lower staff.
- A red line connects a note in the lower staff to a note in the upper staff.

The score includes various musical notations such as notes, rests, and dynamic markings, suggesting a complex and expressive piece.

A handwritten musical score on ten staves, organized into five systems of two staves each. The notation is dense and includes various musical symbols such as notes, rests, and accidentals. The first staff of each system begins with a clef and a key signature of two flats (B-flat and E-flat). The notation is highly detailed, with many notes and accidentals, suggesting a complex piece of music. The handwriting is in dark ink on aged, slightly yellowed paper. The score is written in a style that is both technical and expressive, with some flourishes and corrections visible. The overall layout is clean, with clear bar lines separating the measures. The notation is consistent throughout, with a focus on the rhythmic and melodic elements of the music.

Lacoza

Dec 25, 1971
Dec. 25, 1971

PG 3

A handwritten musical score on ten staves. The notation is dense and includes various musical symbols such as notes, rests, and dynamic markings. The first staff features a treble clef and a key signature of two flats. The second staff has a treble clef and a key signature of one flat. The third staff has a treble clef and a key signature of one flat. The fourth staff has a treble clef and a key signature of one flat. The fifth staff has a treble clef and a key signature of one flat. The sixth staff has a treble clef and a key signature of one flat. The seventh staff has a treble clef and a key signature of one flat. The eighth staff has a treble clef and a key signature of one flat. The ninth staff has a treble clef and a key signature of one flat. The tenth staff has a treble clef and a key signature of one flat. The notation is dense and includes various musical symbols such as notes, rests, and dynamic markings. The first staff features a treble clef and a key signature of two flats. The second staff has a treble clef and a key signature of one flat. The third staff has a treble clef and a key signature of one flat. The fourth staff has a treble clef and a key signature of one flat. The fifth staff has a treble clef and a key signature of one flat. The sixth staff has a treble clef and a key signature of one flat. The seventh staff has a treble clef and a key signature of one flat. The eighth staff has a treble clef and a key signature of one flat. The ninth staff has a treble clef and a key signature of one flat. The tenth staff has a treble clef and a key signature of one flat.

La Coza

Daniel Leo Simpson
April 1970
Tucson, AZ



Andantino $\text{♩} = 108$

Viola

Piano

p *cresc.* *mf* *mf*

5 *poco rit.* *// a tempo* $\text{♩} = 108$

p *cresc.*

//

p *cresc.*

10

mp

mp

14

mf *cresc.*

18

f *rit.*

23

con brio ♩ = 112

mf *cresc.*

28

f

f

32

p *cresc.*

p *cresc.*

36

f

f

40

43 **meno mosso**

47 **meno mosso** 1. **più adagio**