

# Quatuor Op.4 n°2

Alto

Hyacinthe JADIN  
(1776-1800)

**Allegro non troppo**

Musical notation for the first staff of the Alto part, starting with a treble clef, a key signature of one flat (B-flat), and a 6/8 time signature. The music begins with a piano (*p*) dynamic marking.

Musical notation for the second staff of the Alto part, starting at measure 7. It features a key signature change to two sharps (D major) at the end of the staff.

Musical notation for the third staff of the Alto part, starting at measure 14.

Musical notation for the fourth staff of the Alto part, starting at measure 21. It ends with a forte (*f*) dynamic marking.

Musical notation for the fifth staff of the Alto part, starting at measure 28. It includes piano (*p*) and forte (*f*) dynamic markings.

Musical notation for the sixth staff of the Alto part, starting at measure 35.

Musical notation for the seventh staff of the Alto part, starting at measure 41.

Musical notation for the eighth staff of the Alto part, starting at measure 47.

Musical notation for the ninth staff of the Alto part, starting at measure 54.

Musical notation for the tenth staff of the Alto part, starting at measure 61. It includes a first ending bracket (1) and dynamic markings of forte (*f*) and piano (*p*).

69

*f*

78

*p*

85

*f*

93

*p*

102

*f*

110

*f*

121

*p*

131

*f*

140

*f*

147

*1*

155

163

171

178

189

197

206

213

221

### Minuetto

2

1

12

2

Fin

Trio

1

1

36

1

D.C.

## Adagio molto

*p*

7

*f*

14

21

24

*p*

28

*dolce*

*p*

34

40

*f*

46

*p*

49

*f*

52

*p*

60

*p*

*p*

66

*dolce*

## Allegro assai

1

*f* *p*

8

1

*f* *p*

16

23

*f*

31

*p*

38

47

*f* *p*

53

*f* *p*

59

Detailed description: This page contains the musical score for the Alto part of a piece titled 'Allegro assai'. The score is written in bass clef with a key signature of one flat (B-flat) and a time signature of 2/4. It consists of ten staves of music, numbered 1 through 59. The first staff begins with a first ending bracket over a whole rest, followed by a series of eighth notes and sixteenth notes. Dynamic markings include *f* (forte) and *p* (piano). The music features various rhythmic patterns, including eighth-note runs and sixteenth-note passages. The score concludes with a final measure on the tenth staff.

65



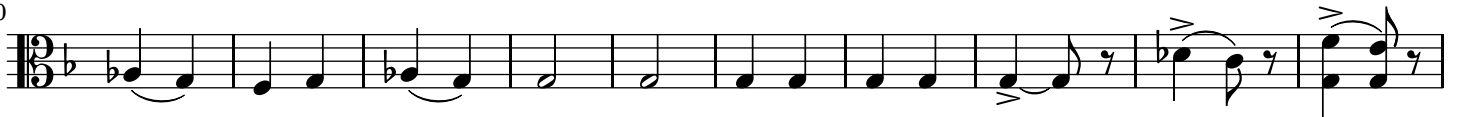
74



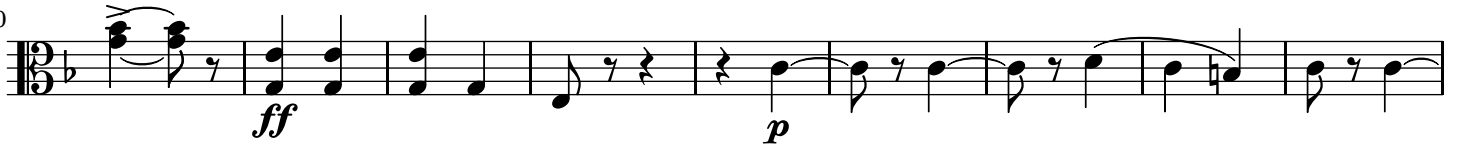
83



90



100



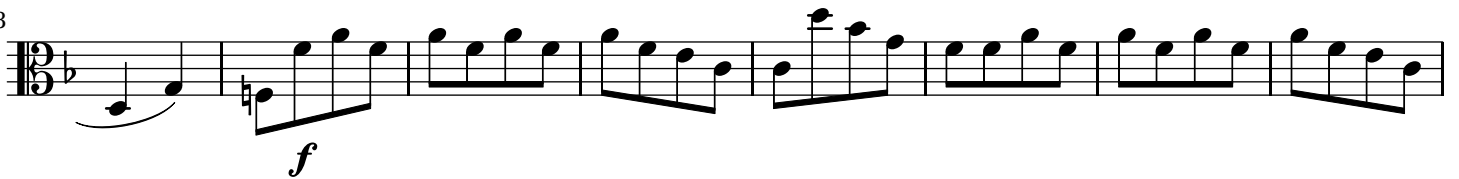
109



117



123



131

