

1<sup>ST</sup> Quatuor  
Viola

DOUBLE QUATUOR

Louis Spohr

I.

pp

pp

dim.

1

p

Cres

cen

do

f

1 2 3

p f dim. p pp

3 dolce.

p cresc.

f

dim. p

2

1

pp

1 2

1 2

1 2

pp

tr

2

*cres - - - en - - - do - - - f dim - - -*

*1 p crescendo f*

*pp p*

*1 pp cresc. f*

*p tr tr cresc.*

*f*

*p cresc.*

*f dim. p pp p*

*4 cresc. f*

*p*

*1 f*

*4 p pp*

*cresc. f ff*

# II.

## Menuetto.

Musical score for the Menuetto section, measures 1-16. The score is in 3/4 time and B-flat major. It features a variety of dynamics including *f*, *dim.*, *p*, *mf*, and *f*. There are first and second endings marked with '1.' and '2.'.

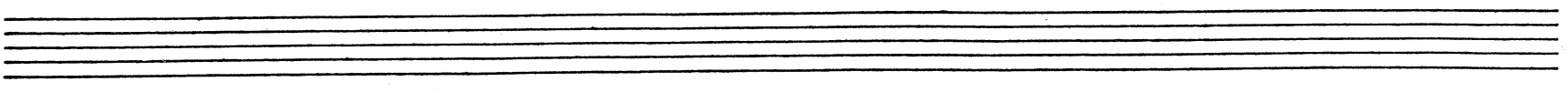
## Trio.

Musical score for the Trio section, measures 17-24. The score is in 3/4 time and B-flat major. It features a variety of dynamics including *p*, *pp*, and *cresc.*. The texture is primarily accompanimental with eighth and sixteenth notes.

## Coda.

Menuetto da Capo senza replica e poi la Coda.

Musical score for the Coda section, measures 25-32. The score is in 3/4 time and B-flat major. It features a variety of dynamics including *f*, *ff*, *dim.*, *pp*, and *morendo.*. There are first and second endings marked with '1.' and '2.'.



III

Larghetto con moto.

1

*mf* *p*

*pp*

*cresc.* *f* *p* *f*

*p* *mf* *dim.* *p*

*cresc.* *f* *pp* *p* *pizz.*

*f*

*arco.* *dim.* *p*

*pp*

*cresc.* *f* *dim.* *p*

1st Quartop  
Viola

1  
cresc. f p pp

2  
pp pizz.

1 arco.  
morendo.

IV

Allegretto

pp fz fz

fz mf p pp

fz fz cresc.

fz dim. p pp f

> > > f fz fz fz

pp pizz. arco. pizz. arco. cresc. dim.

pp

dim. arco. cresc. f

This page of musical notation consists of 14 staves, each containing a different musical part. The notation includes various dynamics such as *f*, *p*, *mf*, *pp*, *fz*, and *pparco.*, as well as articulations like *tr.* and *cresc.*. Fingerings are indicated by numbers 1, 2, and 3. The music is written in a key signature of two flats and a 2/4 time signature. The staves are arranged vertically, with the first staff at the top and the last staff at the bottom. The notation is dense and includes many slurs, ties, and accents.

1st Quartuor  
Viola

First musical staff with treble and bass clefs, key signature of two flats, and 4/4 time signature. It contains a melodic line with slurs and dynamic markings *fz* and *f*. Fingering numbers 1 and 2 are indicated above the notes.

Second musical staff with treble and bass clefs, key signature of two flats, and 4/4 time signature. It contains a melodic line with slurs and dynamic markings *p* and *f*.

Third musical staff with treble and bass clefs, key signature of two flats, and 4/4 time signature. It contains a melodic line with slurs and dynamic markings *fz* and *p*.

Fourth musical staff with treble and bass clefs, key signature of two flats, and 4/4 time signature. It contains a melodic line with slurs and dynamic markings *fz*, *p*, and *dim.*. Fingering number 4 is indicated above the notes.

Fifth musical staff with treble and bass clefs, key signature of two flats, and 4/4 time signature. It contains a melodic line with slurs and dynamic markings *fz* and *p*. Fingering number 5 is indicated above the notes.

Sixth musical staff with treble and bass clefs, key signature of two flats, and 4/4 time signature. It contains a melodic line with slurs and dynamic markings *f*. Fingering number 4 is indicated above the notes.

Seventh musical staff with treble and bass clefs, key signature of two flats, and 4/4 time signature. It contains a melodic line with slurs and dynamic markings *f*. Fingering number 3 is indicated above the notes.

Eighth musical staff with treble and bass clefs, key signature of two flats, and 4/4 time signature. It contains a melodic line with slurs and dynamic markings *p* and *f*. Fingering numbers 1, 2, and 3 are indicated above the notes.

Ninth musical staff with treble and bass clefs, key signature of two flats, and 4/4 time signature. It contains a melodic line with slurs and dynamic markings *p* and *ff*.