

SONATE DA CAMERA A TRE

Violoncello

Sonata VII

Antonio Vivaldi, Op. 1

PRELUDIO

Largo

Musical score for the Preludio of Sonata VII, Violoncello part. The score consists of four staves of music. The first staff begins with a treble clef, a key signature of two flats (B-flat and E-flat), and a common time signature. The tempo is marked 'Largo'. The music features a series of eighth-note patterns with slurs. The second staff is marked with a '3' above the staff. The third staff is marked with a '6' above the staff. The fourth staff is marked with a '9' above the staff and ends with a fermata. The word 'piano' is written below the fourth staff.

ALLEMANDA

Allegro

Musical score for the Allemanda of Sonata VII, Violoncello part. The score consists of nine staves of music. The first staff begins with a treble clef, a key signature of two flats (B-flat and E-flat), and a common time signature. The tempo is marked 'Allegro'. The music features a series of eighth-note patterns with slurs. The second staff is marked with a '6' above the staff. The third staff is marked with a '12' above the staff. The fourth staff is marked with a '17' above the staff. The fifth staff is marked with a '21' above the staff. The sixth staff is marked with a '25' above the staff. The seventh staff is marked with a '30' above the staff and ends with a fermata. The word 'piano' is written below the seventh staff.

Violoncello

SARABANDA
Andante

7

14

20

26

piano

GIGA
Presto

6

12

piano

1. 2.

Sonata VIII

PRELUDIO
Largo

6

11

16

piano

Violoncello

CORRENTE
Allegro

8

17

piano

26

35

44

58

piano

Grave

8

6

9

12

piano

GIGA
Allegro

Violoncello

1 Viol. II

5

12

20

24

28

32

piano

PRELUDIO
Allegro

Sonata IX

10

22

Adagio

5

ALLEMANDA
Allegro

Violoncello

Viol. II

Musical score for the Allemanda section, measures 1-80. The music is written in bass clef with a key signature of two sharps (F# and C#) and a common time signature (C). The tempo is marked 'Allegro'. The score consists of eight staves of music, with measure numbers 6, 11, 18, 24, and 31 indicated at the beginning of their respective staves. The music features a mix of eighth and sixteenth notes, with some rests and dynamic markings.

piano

CORRENTE
Presto

Musical score for the Corrente section, measures 1-52. The music is written in bass clef with a key signature of two sharps (F# and C#) and a 3/4 time signature. The tempo is marked 'Presto'. The score consists of eight staves of music, with measure numbers 8, 18, 28, 37, 44, and 52 indicated at the beginning of their respective staves. The music is characterized by a steady eighth-note rhythm. Dynamic markings include 'piano' and 'forte'.

piano

forte

PRELUDIO

Sonata X

Adagio

Musical notation for the first part of the Preludio, measures 1-19. The music is in a 3/2 time signature with a key signature of two flats. It begins with a half note G2, followed by a series of eighth and sixteenth notes. Measure numbers 10 and 20 are indicated on the left.

ALLEMANDA

Allegro

piano

Musical notation for the first part of the Allemanda, measures 1-35. The music is in a 6/8 time signature with a key signature of two flats. It features a rhythmic pattern of eighth and sixteenth notes. Measure numbers 7, 15, 21, 29, and 36 are indicated on the left. The dynamic marking *piano* appears at measures 15 and 36, and *forte* appears at measure 36.

GAVOTTA

Presto

Musical notation for the first part of the Gavotta, measures 1-21. The music is in a 6/8 time signature with a key signature of two flats. It features a rhythmic pattern of eighth and sixteenth notes. Measure numbers 7, 15, and 22 are indicated on the left.

Violoncello

29 *piano*
35 *forte* *piano*

PRELUDIO
Andante

Sonata XI

6
12
20 *piano forte*

CORRENTE
Allegro

10
22
34
46
58
69 *piano*

Violoncello

GIGA
Allegro

Viol. I

3

8

piano forte

14

2

23

GAVOTTA
Presto

7

14

piano

21

forte

27

piano

Sonata XII
Folia

1. Adagio

8

piano

Violoncello

2. Andante

17
25

Detailed description: This block contains two staves of music. The first staff starts at measure 17 and the second at measure 25. The tempo is marked 'Andante'. The music is in a 3/4 time signature with a key signature of one flat (B-flat). It features a melodic line with eighth and sixteenth notes, often beamed together, and some rests.

3. Allegro

33

Detailed description: This block contains one staff of music starting at measure 33. The tempo is marked 'Allegro'. The notation continues with a similar melodic style as the previous section, using eighth and sixteenth notes.

4.

44
54

Detailed description: This block contains two staves of music. The first staff starts at measure 44 and the second at measure 54. The tempo remains 'Allegro'. The music continues with melodic lines and some rests.

5.

65
70
75

Detailed description: This block contains three staves of music. The first staff starts at measure 65, the second at measure 70, and the third at measure 75. The tempo remains 'Allegro'. The music continues with melodic lines and some rests.

6.

81
84
88
92

Detailed description: This block contains four staves of music. The first staff starts at measure 81, the second at measure 84, the third at measure 88, and the fourth at measure 92. The tempo remains 'Allegro'. The music continues with melodic lines and some rests.

7.

97

104

Detailed description: This block contains two staves of music. The first staff starts at measure 97 and ends at measure 104. The second staff continues from measure 104. The music is in a 3/4 time signature with a key signature of one flat (B-flat). It features a melodic line with eighth and sixteenth notes, and some rests.

8.

113

121

Detailed description: This block contains two staves of music. The first staff starts at measure 113 and ends at measure 121. The second staff continues from measure 121. The music is in a 3/4 time signature with a key signature of one flat. It features a melodic line with eighth and sixteenth notes, and some rests.

9. Adagio

129

134

139

Detailed description: This block contains three staves of music. The first staff starts at measure 129 and ends at measure 134. The second staff continues from measure 134 and ends at measure 139. The third staff continues from measure 139. The music is in a 3/4 time signature with a key signature of one flat. It features a melodic line with eighth and sixteenth notes, and some rests.

10. Vivace

145

153

Detailed description: This block contains two staves of music. The first staff starts at measure 145 and ends at measure 153. The second staff continues from measure 153. The music is in a 3/4 time signature with a key signature of one flat. It features a melodic line with eighth and sixteenth notes, and some rests.

11. Allegro

161

166

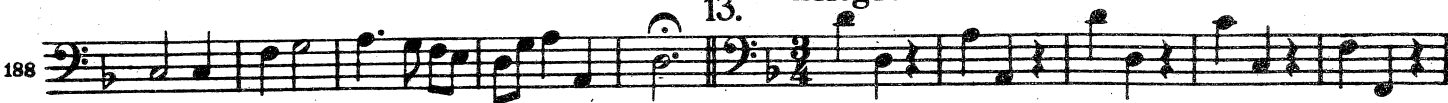
171

Detailed description: This block contains three staves of music. The first staff starts at measure 161 and ends at measure 166. The second staff continues from measure 166 and ends at measure 171. The third staff continues from measure 171. The music is in a 3/4 time signature with a key signature of one flat. It features a melodic line with eighth and sixteenth notes, and some rests.

12. Larghetto



13. Allegro



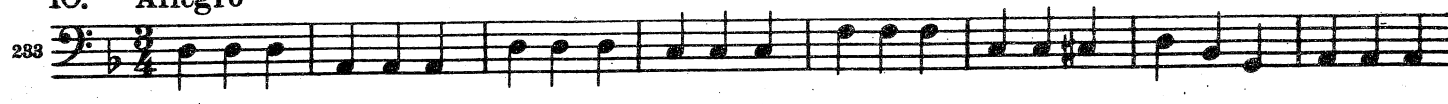
14.



15. Adagio



16. Allegro



17.
249

252

256

260

18.
265

273

19.
281

289

20.
297

301

306

313

317

piano