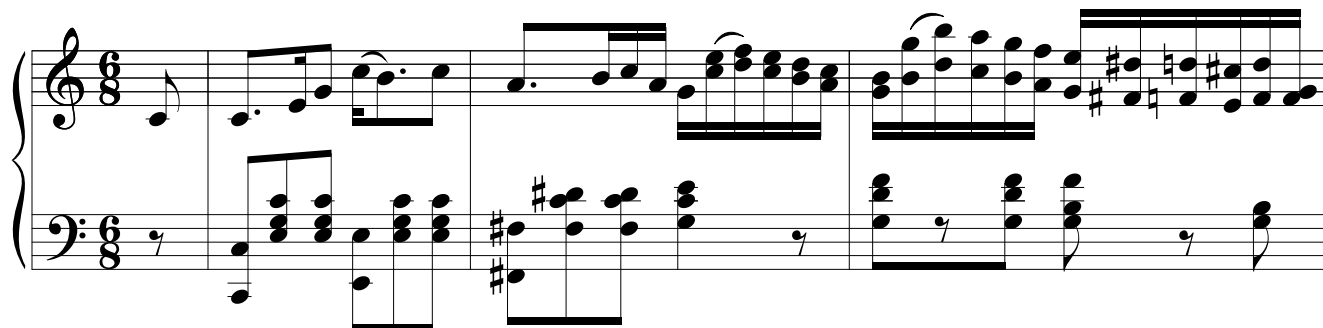


My Dad's Dinner Pail

Words by
Edward Harrigan

From the Play
"Cordelia's Aspirations"

Music by
David Braham



5

1. Pre - serve that old ket - tle, so
2. When the bell rang for meal time, my
3. If the day should be rain - y, my
4. There's a place for the cof - fee and

The first system of the song features a vocal melody line starting at measure 5. The piano accompaniment continues with chords and single notes, supporting the vocal line.

8

black - ened and worn, It be - longed to my fa - ther be -
fa - ther'd come down, He ate with the work - men a -
fa - ther'd stop home, And he'd pol - ish his ket - tle as
8 al - so the bread, The corn - beef and ta - ters and

The second system of the song continues the vocal melody and piano accompaniment. The piano part uses chords and single notes to provide a steady accompaniment for the vocal line.

10

fore I was born, It hung in a cor - ner, be -
 bout on the ground, He'd share with the la - b'rer and
 clean as a stone, He'd joke with my moth - er, and
 oft it was said, Go fill it with por - ter, with

12

yond on a nail, 'Twas an em - blem of la - bor was
 say he'd go bail, You would ne'er reach the bot - tom of
 me he would wale If I just put a fin - ger on
 beer, or with ale, The drink would taste sweet - er from

14 Chorus

Dad's din - ner pail. It glis - tened like sil - ver, so spar - kling and bright, I am
Dad's din - ner pail.
Dad's din - ner pail.
Dad's din - ner pail.

18

fond of the tri - fle that held his wee bite; In — sum - mer or win - ter, in

21

rain, snow, or hail, I've car - ried that ket - tle, my Dad's din - ner pail.

The image shows a musical score for the song 'My Dad's Dinner Pail'. It consists of three systems of music, each with a vocal line and a piano accompaniment. The first system starts at measure 14 and is labeled 'Chorus'. The vocal line has four lines of lyrics, with the first line being the main text. The piano accompaniment is in G major and 2/4 time. The second system starts at measure 18 and continues the chorus. The vocal line has two lines of lyrics. The piano accompaniment continues with chords and moving lines. The third system starts at measure 21 and ends the chorus. The vocal line has one line of lyrics. The piano accompaniment concludes with a final chord. The score is written in standard musical notation with treble and bass staves.