

Englischhorn

Georg Philipp Telemann

# Ouverturen-Suite

TWV 55:a1

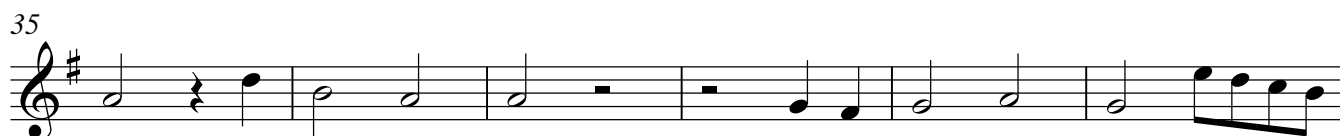
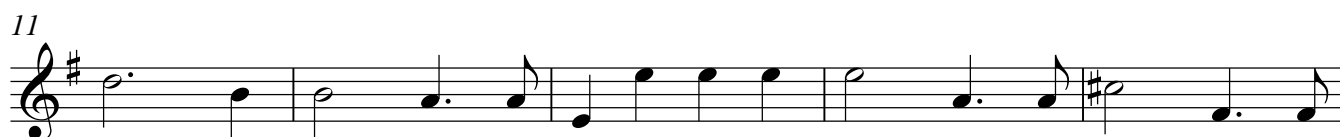
# Englischhorn

## Ouverturen-Suite

TWV 55:a1

G.Ph. Telemann

Lento

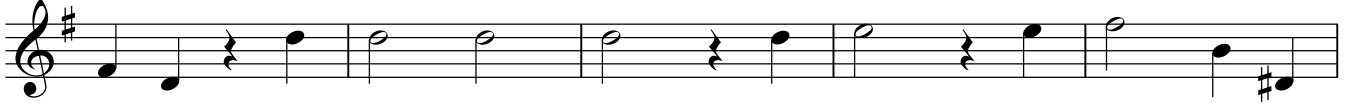


Englischhorn

47



53



58



63



68



73



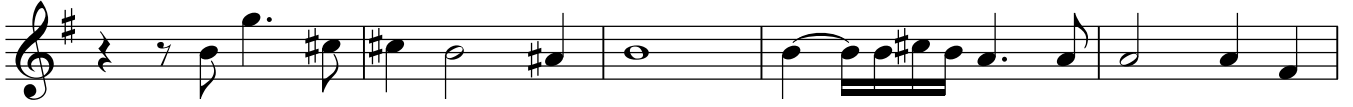
78



83



88



93



97

**D.C. al Fine**



Englischhorn

4

Rondo Allegro

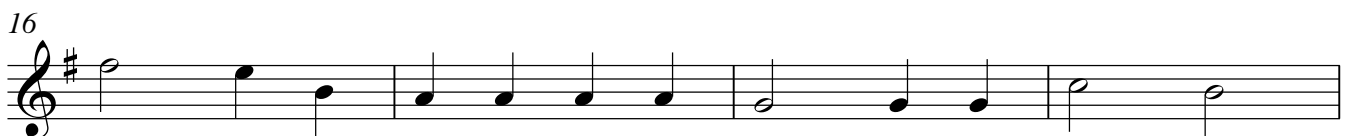


Fine



D.C. al Fine

Gavotte



**Courante**

Musical score for Courante, English Horn part, measures 1-16. The piece is in G major (one sharp) and 6/4 time. The notation consists of six staves of music. Measure 1 starts with a treble clef, a key signature of one sharp (F#), and a 6/4 time signature. The melody is written in a single line. Measure 16 ends with a double bar line.

**Rigaudon**

Musical score for Rigaudon, English Horn part, measures 1-24. The piece is in G major (one sharp) and common time (C). The notation consists of five staves of music. Measure 1 starts with a treble clef, a key signature of one sharp (F#), and a common time signature. The melody is written in a single line. Measure 24 ends with a double bar line and a key signature change to G major (one sharp).

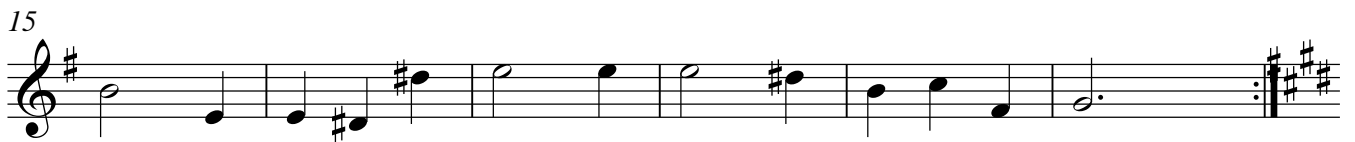
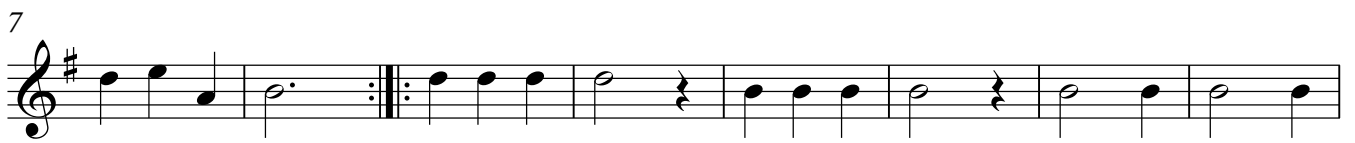
Englischhorn

6

Forlane



Menuett 1



Menuett 2

21



27



34



38

