

SAMFUNDET TIL UDGIVELSE AF DANSK MUSIK

3. SERIE Nr. 24.
1929.

LUDOLF NIELSEN

OP. 10

FORSPIL TIL OPERAEN

ISBELLA

PARTITUR



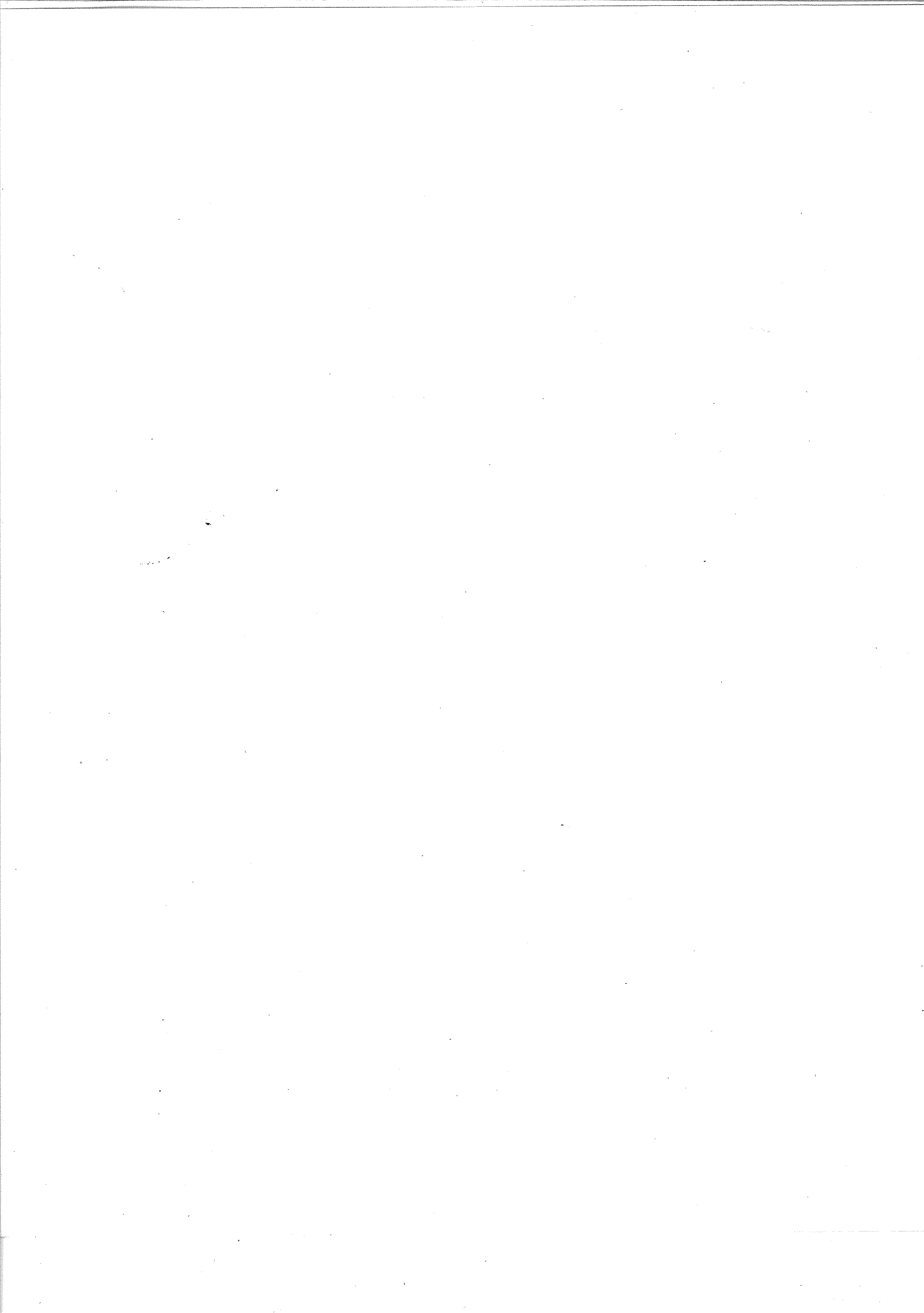
Forlæggerens Ejendom for alle Lande.

København,

SAMFUNDET TIL UDGIVELSE AF DANSK MUSIK

Alleinverttriebsrecht mit Ausnahme von Skandinavien

FR. KISTNER & C.F.W. SIEGEL, LEIPZIG.



Vorspiel zur Oper / Forspil til Operaen

Aufführungsrecht
vorbehalten

ISBELLA

Ludolf Nielsen, Op. 10

Andante lento

Flauto picc. e grande

2 Flauti grandi

2 Oboi

Corno inglese

2 Clarinetti in B

Clarinetto basso in B

2 Fagotti

Contra-fagotto

Corni I, II in F

Corni III, IV in F

3 Trombe in F

Tromboni I, II

Trombone III e Tuba

Timpani in Es-F

Gran Cassa, Gong

Arpa

Violino I

Violino II

Viola

Violoncello

Basso

Andante lento

Corno ingl. *pp*

Cl. B *pp*

Fg. *pp*

I. II. Cor. F *Solo* *p* *pp*

Tr. b. e *pp* *pp* *ppp*

Tuba *pp* *pp* *ppp*

Timp. *pp*

VL. I *pp*

VL. II *pp*

Viola

Vcl. *p*

Corno ingl. *Solo* *p* *rit.*

Cl. B

Cl. basso B *p*

Fg. *p* *rit.*

C-Fg. *p* *rit.*

Tr. F *I. II.* *mp = pp*

Tr. b. e *pp* *mp = pp*

Tuba *pp* *mp = pp*

Arpa *p* *rit.*

(Contr. Fg.) *pp* *rit.*

1

α tempo

Cl. basso B

pp

Fg.

pp

C. Fg.

pp

I. II. Cor. F

ppp

(Cl. basso B)

Trb. III

ppp

(Cont. Fg.)

Viola

pp

α tempo

Vcl.

p espress.

Basso

pp

1

α tempo



Fg.

poco accel.

C. Fg.

Trb. III

poco accel.

VI. I

p

VI. II

p

Viola

mp

Vcl.

p

Basso

p

Fl. gr. *mp* *mf*

O \ddot{u} . *mp* *mf*

Corneo
ingl. *mp*

Cl. B *mp* *mp*

Fg. *mp* *mf*

C.-Fg. *mp*

Cor. F *mf* *mf*

Tr. F

Trb. *p.*

Tuba *p.*

VL I *mf*

VL II *mf*

Viola *mf*

Vcl. *mf*

Basso *mf*

This page of a musical score, numbered 9 in the top right corner, features a variety of instruments. The woodwind section includes Fl. gr., Ob., Corno ingl., Cl. B., and Fg. The brass section consists of I II Cor. F. The keyboard section includes Arpa. The string section is divided into VI. I, VI. II, Viola, Vel., and Basso. The score is written in a key signature of two flats and a 3/4 time signature. Dynamic markings such as *p* and *pp* are used throughout. The Fl. gr. part begins with a *p* dynamic and features a melodic line with slurs. The Ob. part has a *p* dynamic and includes a triplet of eighth notes. The Corno ingl. part starts with a *p* dynamic and has a melodic line. The Cl. B. part has a *p* dynamic and includes a triplet of eighth notes. The Fg. part has a *p* dynamic and includes a triplet of eighth notes. The I II Cor. F. part has a *p* dynamic and includes a triplet of eighth notes. The Arpa part has a *pp* dynamic and includes a triplet of eighth notes. The VI. I part has a *p* dynamic and includes a triplet of eighth notes. The VI. II part has a *p* dynamic and includes a triplet of eighth notes. The Viola part has a *p* dynamic and includes a triplet of eighth notes. The Vel. part has a *p* dynamic and includes a triplet of eighth notes. The Basso part has a *p* dynamic and includes a triplet of eighth notes.

Fl. picc.
Fl. gr. *p cresc.* *mp* *cresc.*
Ob. *p cresc.* *mp* *cresc.*
Corno ingl. *mp* *cresc.*
Cl. B. *p cresc.* *mp* *cresc.*
Cl. basso B. *mp*
Fg. *mp* *cresc.*
C.-Fg. *mp*
Cor. F. *mp* *cresc.*
Tr. F. *mp*
I II Trb. *mp cresc.* *muta in H*
Timp. *p cresc.*
VL I *mp* *cresc.*
VL II *mp* *cresc.*
Viola *mp div.* *cresc.*
Vcl. *mp* *cresc.*
Basso *mp* *cresc.*

Grandioso

Fl. picc.
Fl. gr.
Ob.
Corno ingl.
Cl. B
Cl. basso B
Fg.
C.-Fg.
Cor. F
Tr. F
Trb. e
Tuba
Timp.
Vl. I
Vl. II
Viola
Vcl.
Basso

muto in B

Grandioso

Fl. picc.

Fl. gr.

Ob.

Corno ingl.

Cl. B

Cl. basso B

Fg.

C-Fg.

Cor. F

Tr. F

Trb. e Tuba

Timp.

Vn. I

Vn. II

Viola

Vcl.

Cbasso

muta in Des

rit. 5 a Tempo I

Fl. piccolo

Fl. gr.

Ob.

Corno ingl.

Cl. B.

Cl. basso B

Fg.

C. Fg.

Cor. F.

Tr. B.

Tr. e

Tuba

Timp.

Piatti Gr. Cassa

Vi. I.

Vi. II.

Viola

Viol.

Basso

muta in Es. As

Piatti Gr. C.

rit. 5 a Tempo I

This page of a musical score, numbered 16, contains the following instruments and parts:

- Fl. picc.** (Piccolo Flute)
- Fl. gr.** (Grand Flute)
- Ob.** (Oboe)
- Corno ingl.** (English Horn)
- Cl. basso B** (Bass Clarinet)
- Fg.** (Fagotto)
- G. Fg.** (Grossfagotto)
- Cor. F** (Trumpets)
- Tr. F** (Trumpets, 1. and 2. parts)
- Trb.** (Trombones)
- Tuba**
- Timp.** (Timpani)
- VL. I** (Violins I)
- VL. II** (Violins II)
- Viola**
- Vel.** (Violoncello)
- Basso** (Bass)

The score includes dynamic markings such as *cresc.* and *fff*. A section of the timpani part is marked *rit. in Es-As*. The page concludes with a double bar line.

6 *tranq.*
muta in Fl. gr.

Fl. picc. *pp*

Fl. gr. *mp* *pp*

Ob. *pp* *pp*

Corno ingl. *pp* *pp*

Cl. B *pp* *pp*

Arpa *p*

Solo-Vl. *mp* *div.*

Vl. I *pp* *pp*

Vl. II *pp* *pp*

(Ob. II)

Fl. gr. *pp*

Ob. *pp*

Corno ingl. *pp*

Arpa *pp* *ppp*

Solo-Vl. *dim.* *p*

Vl. I *dim.* *p*

Vl. II *dim.* *p*

Viola *p*

Cl. B
 Cl. basso B
 Fg.
 Tr. F
 Trb. e
 Tubax
 VI. I
 VI. II
 Viola
 Corno ingl.
 Cl. B
 Cl. basso B
 Fg.
 C. Fg.
 Tr. F
 Trb. e
 Tubax
 Timp.
 Gong
 Arpa
 Viola
 Vel.
 Basso

Musical score for page 18, featuring various instruments including woodwinds, strings, brass, and percussion. The score includes dynamic markings such as *p*, *pp*, *ppp*, *dim.*, and *rit.*, and performance instructions like *con sordino* and *pizz.*. A boxed number "7" is present at the top right.

