

Duet, Op. 19 Nr. 2

Clarinet in C

Georg Friedrich Fuchs

Allegro

3

5

10

14

21

27

32

36 *f* *tr*

41

47

53

58

63

70

78

84

3

88

93

98

103

109

114

119

Andante

3

6

11

16

22

29

35

40

45

Fine

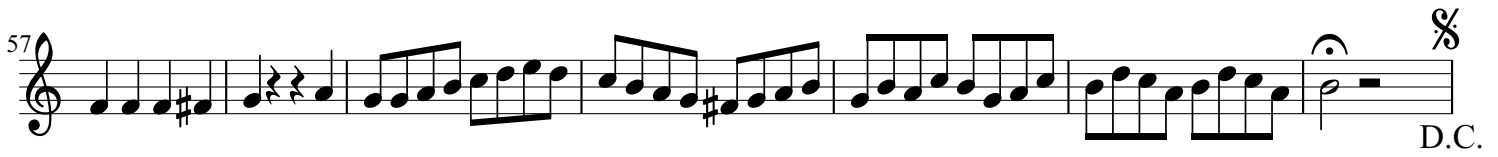
D.C.

tr

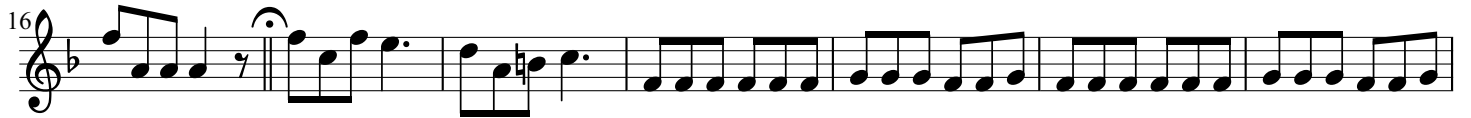
tr


tr

tr



Rondeau



50  Musical notation for measures 50-57. Measure 50 starts with a treble clef, a key signature of one flat, and a common time signature. It features eighth notes with slurs and a fermata. A double bar line with a repeat sign is followed by the instruction "D.C.". The notation continues with eighth notes and a quarter rest.

58  Musical notation for measures 58-64. The notation consists of eighth notes and quarter notes, some with slurs.

65  Musical notation for measures 65-71. Measure 65 begins with a fermata. The notation includes eighth notes, quarter notes, and a sixteenth-note triplet.

72  Musical notation for measures 72-76. Measures 72-75 feature a continuous sixteenth-note pattern, while measure 76 ends with a quarter note and a quarter rest.

77  Musical notation for measures 77-83. The notation consists of eighth notes and quarter notes, some with slurs.

84  Musical notation for measures 84-88. The notation consists of eighth notes and quarter notes, some with slurs.

89  Musical notation for measures 89-92. Measures 89-91 feature eighth notes with slurs. Measure 92 ends with a fermata and a double bar line with a repeat sign, followed by the instruction "D.C.". The key signature changes to two flats.