

C

Violino Secondo



*Delle Sonate à Tre Due Violini e Basso
Dedicate*

*All' Altezza Serenissima Elettorale
Di Baviera*

Da Michele Mascitti Napolitano

Opera Quarta

in Parigi 1711.

*Se vend chez Foucaut Marchand a l'entré de la riue S.^t honoré ala regle d'or.
Et chez le S.^r bir el faiseur d'Instrumens de la Musique du Roy. riue S.^t martin vis a vis la fontaine Maubuc.*

Le prix des deux livres en blanc est de Dix livres.

Gravé par H. de Baussen

Avec Privilege du Roy

I Sonata IX. Violino Secondo

Grave

The first system of the first movement is written on a single staff in treble clef with a key signature of one sharp (F#) and a common time signature (C). The tempo is marked 'Grave'. The music begins with a series of eighth and sixteenth notes, followed by a more melodic line with some rests.

Allegro

The second and third systems of the first movement continue the 'Allegro' section. The second system features a very active, rhythmic passage with many sixteenth and thirty-second notes. The third system continues this fast-paced texture with various rhythmic patterns and some rests.

Largo

The fourth and fifth systems of the first movement are marked 'Largo'. The fourth system shows a change in tempo and mood, with a more spacious feel and some triplet markings. The fifth system concludes the first movement with a final melodic phrase, ending with a fermata and the word 'Folli' written below the staff.

2

Giga Allegro

Sonata
X

Allegro

Presto

Adagio

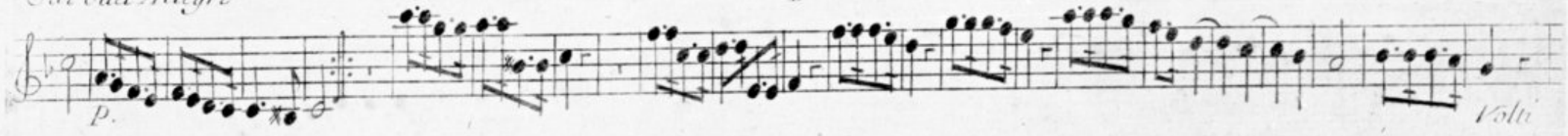
largo



Giga Allegro



Gavotta Allegro



5
Sonata XI.

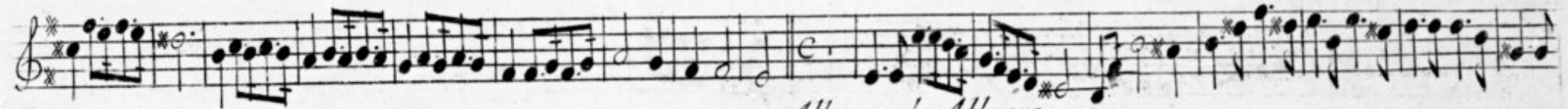
Grave

Allegro

p.

largo et affettuoso

The image shows a page of handwritten musical notation for a piece titled "Sonata XI." The page is numbered "5" in the top left corner. It contains eight staves of music, all written in treble clef with a key signature of one sharp (F#). The first staff is marked "Grave" and begins with a common time signature (C). The second staff is marked "Allegro" and begins with a 9/8 time signature. The third staff is marked "Allegro" and begins with a common time signature (C). The fourth staff is marked "Allegro" and begins with a common time signature (C). The fifth staff is marked "Allegro" and begins with a common time signature (C). The sixth staff is marked "Allegro" and begins with a common time signature (C). The seventh staff is marked "Allegro" and begins with a common time signature (C). The eighth staff is marked "largo et affettuoso" and begins with a 3/4 time signature. The notation includes various rhythmic values, accidentals, and dynamic markings, including a piano (*p.*) marking on the seventh staff.



Allemanda Allegro



Allegro



Sonata XII.



largo



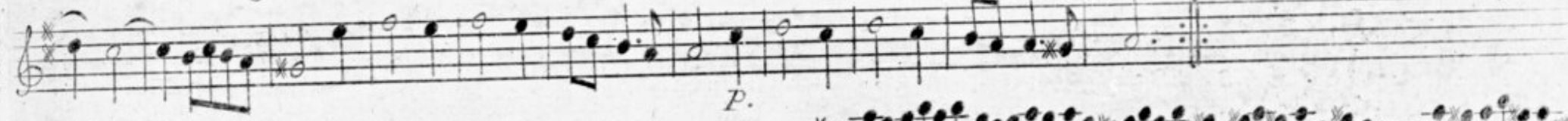
Volto



Allemanda Allegro



Sarabanda largo



P.



Allegro



Sonata XIII.

Vn poco Andante

Gavotta Allegro

Sonata XIV.

Vn poco Andante

Adagio

Allemanda Allegro

Sarabanda un poco Andante

Allegro

