

A NEW SCOTCH TUNE

for Oboe & Harpsichord

Score (00':50'')

Z. 655

Henry Purcell (1659 - 1695)

Arr. Michel Rondeau

Allegretto ♩ = 65

Oboe

Harpsichord

Detailed description: This system contains the first four measures of the piece. The Oboe part is written in a single staff with a treble clef, a key signature of one sharp (F#), and a common time signature (C). It begins with a quarter rest, followed by a quarter note G4, a quarter note A4, a quarter note B4, and a quarter note G4. The Harpsichord part consists of two staves, treble and bass clefs, with a key signature of one sharp and common time. The right hand starts with a quarter rest, followed by a quarter note G4, a quarter note A4, and a quarter note B4. The left hand starts with a quarter rest, followed by a quarter note G3, a quarter note A3, and a quarter note B3. The music concludes with a quarter note G4 in both parts.

Ob.

Hpschd.

Detailed description: This system contains measures 5 through 8. The Oboe part starts with a measure rest, then a quarter note G4, a quarter note A4, a quarter note B4, and a quarter note G4. The Harpsichord part continues with a quarter note G4 in the right hand and a quarter note G3 in the left hand. The music concludes with a quarter note G4 in both parts.

Ob.

Hpschd.

Detailed description: This system contains measures 9 through 12. The Oboe part starts with a measure rest, then a quarter note G4, a quarter note A4, a quarter note B4, and a quarter note G4. The Harpsichord part continues with a quarter note G4 in the right hand and a quarter note G3 in the left hand. The music concludes with a quarter note G4 in both parts.

A NEW SCOTCH TUNE

for Oboe & Harpsichord

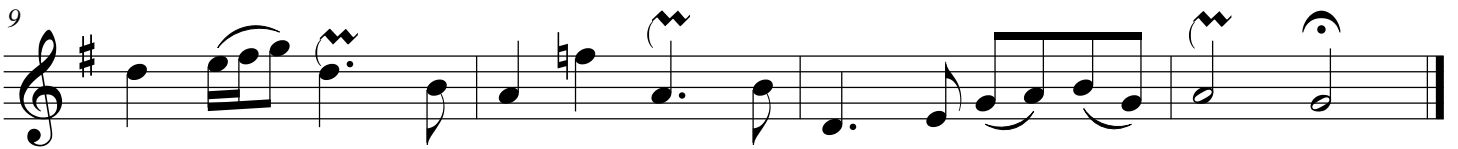
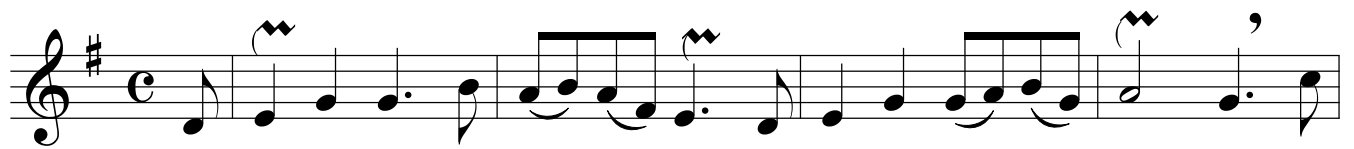
Z. 655

Henry Purcell (1659 - 1695)

Arr. Michel Rondeau

Oboe

Allegretto ♩ = 65



A NEW SCOTCH TUNE

for Oboe & Harpsichord

Z. 655

Henry Purcell (1659 - 1695)

Arr. Michel Rondeau

Harpsichord

Oboe

Allegretto ♩ = 65

Harpsichord

Ob.

Hpschd.

Ob.

Hpschd.