

GAILLARDE

(from: *Terpsichore*, TMA 301 - 1612)
for Oboe & Harpsichord

Score (00':45'')

Anonymous

Arr. Michel Rondeau

Allegretto ♩ = 51

Oboe

Harpsichord

Detailed description: This block contains the first system of the musical score, measures 1 through 8. The Oboe part is written on a single staff in treble clef with a 3/8 time signature. The Harpsichord part consists of two staves, treble and bass clef, with a 3/8 time signature. The key signature has one sharp (F#). The music features a rhythmic melody in the oboe and a supporting accompaniment in the harpsichord.

Ob.

Hpschd.

Detailed description: This block contains the second system of the musical score, measures 9 through 16. The Oboe part continues the melody from the first system. The Harpsichord part provides accompaniment. Both parts end with a repeat sign and a fermata over the final note. The measure numbers 9 and 9 are written above the first notes of the Oboe and Harpsichord staves respectively.

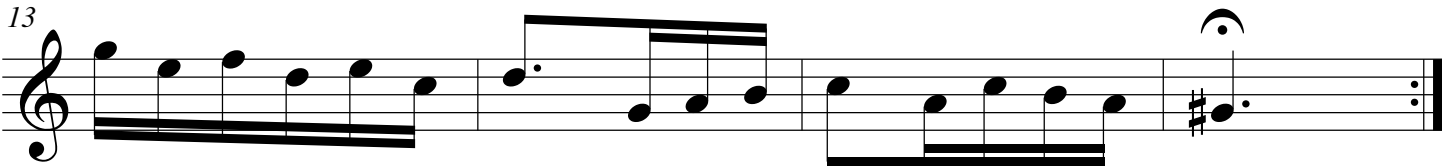
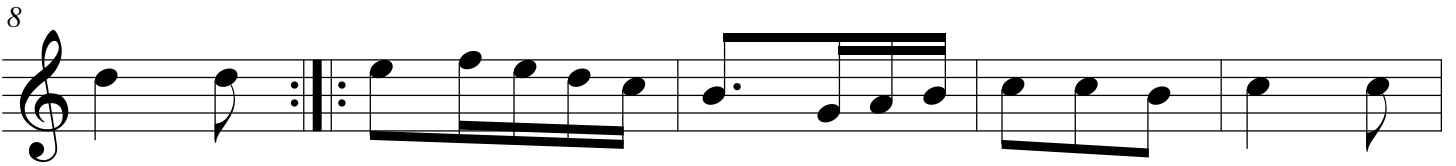
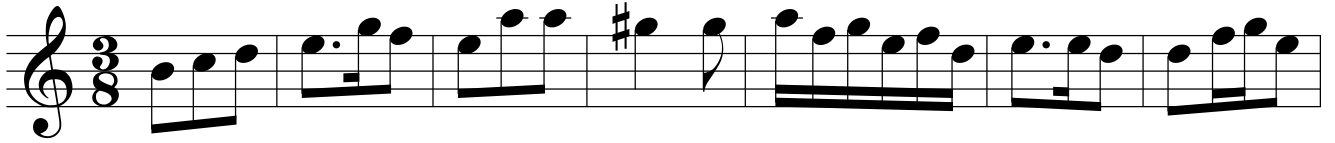
GAILLARDE

(from: *Terpsichore*, TMA 301 - 1612)
for Oboe & Harpsichord

Oboe

Anonymous
Arr. Michel Rondeau

Allegretto ♩. = 51



GAILLARDE

(from: *Terpsichore*, TMA 301 - 1612)
for Oboe & Harpsichord

Harpsichord

Anonymous
Arr. Michel Rondeau

Oboe

Allegretto ♩ = 51

Harpsichord

Detailed description: This block contains the first system of the musical score, measures 1 through 8. It features two staves: an Oboe staff in treble clef and a Harpsichord staff in treble and bass clefs. The key signature has one sharp (F#) and the time signature is 3/8. The tempo is marked 'Allegretto' with a quarter note equal to 51 beats per minute. The Oboe part consists of eighth-note patterns, while the Harpsichord part provides harmonic accompaniment with chords and moving lines in both hands.

Ob.

Hpschd.

Detailed description: This block contains the second system of the musical score, measures 9 through 16. It continues the Oboe and Harpsichord parts from the first system. The Oboe staff (labeled 'Ob.') and Harpsichord staff (labeled 'Hpschd.') both have a measure rest for the first measure of this system (measure 9). The Oboe part continues with eighth-note patterns, and the Harpsichord part continues with its accompaniment. The system concludes with a double bar line and repeat dots.