

Concerto à 5. Hautbois. 2 Violini Viola e Basso. del Sign. Heinrich.

3865/8 5429/8

Mus. ms. 240/8

*ff* *allegro*

70

*piano*

30

Großherzoglich  
Hessische  
Hofbibliothek

fol. (3)



Handwritten musical score on a single page, featuring ten staves of music. The notation includes various note values, rests, and clefs. The paper shows signs of age and wear.

Handwritten musical score on a single page, featuring ten staves of music. The notation includes various note values, rests, and clefs. The paper shows signs of age and wear.

Handwritten musical score on a single page, featuring ten staves of music. The notation includes various note values, rests, and clefs. The paper shows signs of age and wear.

Handwritten musical score on a single page, featuring ten staves of music. The notation includes various note values, rests, and clefs. The paper shows signs of age and wear.

Continuation of the handwritten musical score on the adjacent page, showing the right edge of the manuscript with several staves of music.



*rit. dyn*

*f*

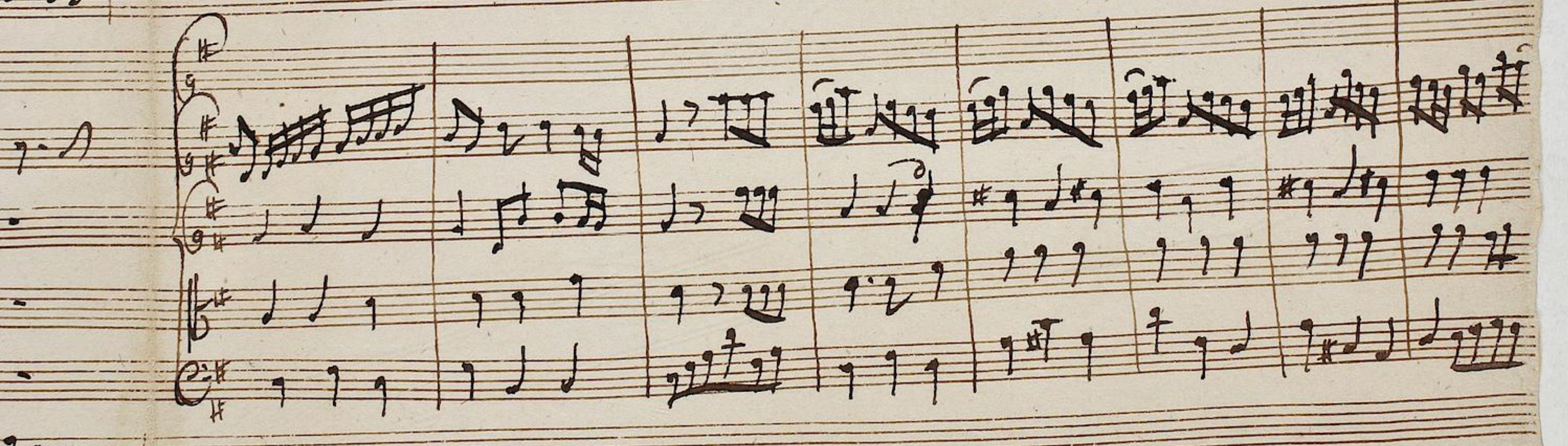
*staccato e sempre pian*

*rit. dyn*



*rit. dyn*

*Allegro*





Handwritten musical score on aged paper, featuring multiple staves with musical notation, including notes, rests, and clefs. The notation is dense and characteristic of early printed music manuscripts. The paper shows signs of age, including discoloration and some staining.



Handwritten musical score on aged paper, first system. It features a treble clef and a key signature of one sharp (F#). The notation includes various rhythmic values and dynamic markings such as *p.* (piano). Above the first staff, the numbers "3865" and "240/8" are written. The system concludes with a repeat sign and a fermata over a quarter note.

Handwritten musical score, second system. It continues with the same notation and includes a dynamic marking of *for.* (forte) in the lower staves.

Handwritten musical score, third system. This system includes a dynamic marking of *p.* (piano) and a fermata over a quarter note.

Handwritten musical score, fourth system. It features a treble clef and a key signature of one sharp (F#). The notation includes various rhythmic values and dynamic markings such as *p.* (piano).

Handwritten musical score, fifth system. It features a treble clef and a key signature of one sharp (F#). The notation includes various rhythmic values and dynamic markings such as *p.* (piano). The system concludes with a repeat sign and a fermata over a quarter note.

50



Handwritten musical score on a single system of five staves. The notation includes treble and bass clefs, a key signature of one sharp (F#), and various rhythmic values such as eighth and sixteenth notes. The music is written in a cursive, historical style.

Handwritten musical score on a single system of five staves. The notation includes treble and bass clefs, a key signature of one sharp (F#), and various rhythmic values. The music is written in a cursive, historical style.

Handwritten musical score on a single system of five staves. The notation includes treble and bass clefs, a key signature of one sharp (F#), and various rhythmic values. The music is written in a cursive, historical style.

Handwritten musical score on a single system of five staves. This system features a dense texture with many beamed notes, possibly representing a complex rhythmic pattern or a specific instrumental technique. The notation includes treble and bass clefs, a key signature of one sharp (F#), and various rhythmic values.

Handwritten musical score on a single system of five staves. The notation includes treble and bass clefs, a key signature of one sharp (F#), and various rhythmic values. The music is written in a cursive, historical style.

Großherzoglich  
hessische  
Hofbibliothek

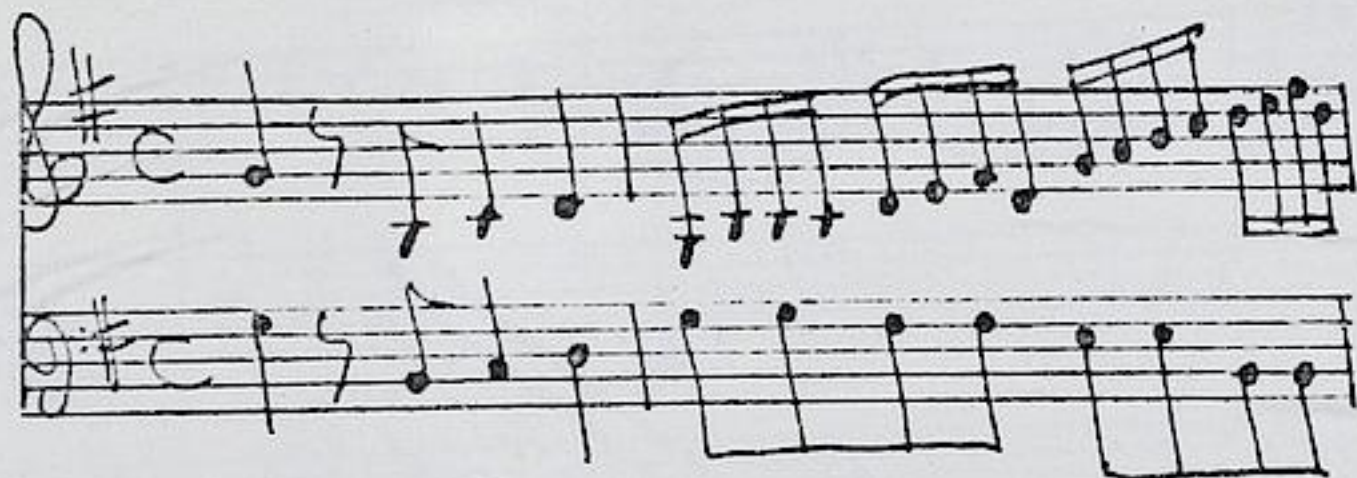




Heinichen, David (1683-1729)

BRD DS Mus.ms 240/8

Concerto à 5. Hautbois. 2. Violini, Viola è Basso. del Sig.<sup>r</sup>  
Heinichen. / (G-dur) [Kopftitel]



Allegro C G-dur - Adagio  
3/4 e-moll - Allegro 3/4  
G-dur.

Ms. ca. 1730 (~~Graupner~~).

35 x 21 cm.

partitur: 3 Bl.

Alte Sign.: Stempel: L mit Krone. 542/8. 3865/8.

Haußwald I, 5.

