

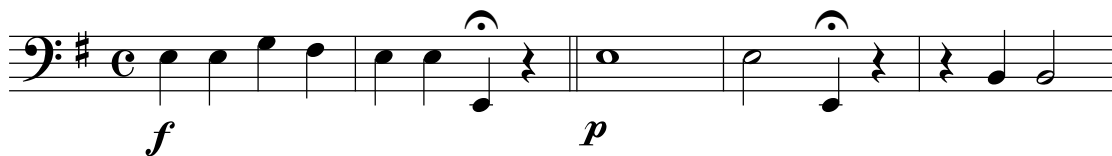
Contrabass

Motetos de N. S. das Dores

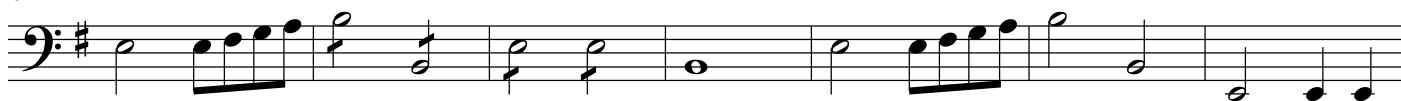
J. Horta

Moderato

Moteto 01 Stabat Mater



6

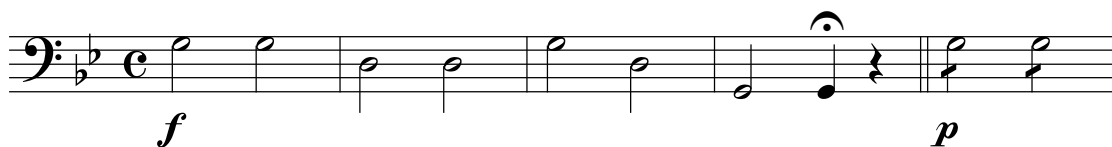


13



Moderato

Moteto 02 O quam tristis



Moderato

Moteto 03
Quis non posset

First system: Bass clef, C major, common time. The melody begins with a half note G2, followed by quarter notes A2, B2, and C3. A half note D3 is followed by a quarter rest, then a half note E3. The system ends with a double bar line and a half note F3. Dynamics: *f* at the beginning, *p* at the end.

Second system: Continuation of the melody. It starts with a half note G3, followed by quarter notes A3, B3, and C4. A half note D4 is followed by a quarter rest, then a half note E4. The system ends with a double bar line and a half note F4.

Third system: Continuation of the melody. It starts with a half note G4, followed by quarter notes A4, B4, and C5. A half note D5 is followed by a quarter rest, then a half note E5. The system ends with a double bar line and a half note F5.

Fourth system: Continuation of the melody. It starts with a half note G5, followed by quarter notes A5, B5, and C6. A half note D6 is followed by a quarter rest, then a half note E6. The system ends with a double bar line and a half note F6.

Moderato

Moteto 04
Eia Mater

First system: Bass clef, C major, common time. The melody begins with a half note G2, followed by quarter notes A2, B2, and C3. A half note D3 is followed by a quarter rest, then a half note E3. The system ends with a double bar line and a half note F3. Dynamics: *f* at the beginning, *p* at the end.

Second system: Continuation of the melody. It starts with a half note G3, followed by quarter notes A3, B3, and C4. A half note D4 is followed by a quarter rest, then a half note E4. The system ends with a double bar line and a half note F4.

Third system: Continuation of the melody. It starts with a half note G4, followed by quarter notes A4, B4, and C5. A half note D5 is followed by a quarter rest, then a half note E5. The system ends with a double bar line and a half note F5.

Fourth system: Continuation of the melody. It starts with a half note G5, followed by quarter notes A5, B5, and C6. A half note D6 is followed by a quarter rest, then a half note E6. The system ends with a double bar line and a half note F6.

Moderato

Moteto 05

Fac me tecum

The bass line is written on a single staff in bass clef with a key signature of one sharp (F#). It consists of 10 measures. The first measure has a quarter note G2 and a quarter rest. The second measure has a whole rest with a '2' above it. The third measure has a half note G2. The fourth measure has a half note F#2. The fifth measure has a whole rest with a '2' above it. The sixth measure has a quarter note G2. The seventh measure has a quarter note F#2. The eighth measure has a quarter note E2. The ninth measure has a quarter note D2. The tenth measure has a half note C2 and a half rest. The piece ends with a double bar line.

Moderato

Moteto 06

Quando corpus

[illegible]