

Trombone 3

Escrava Isaura

Overture

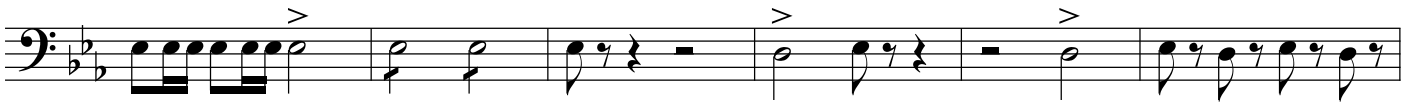
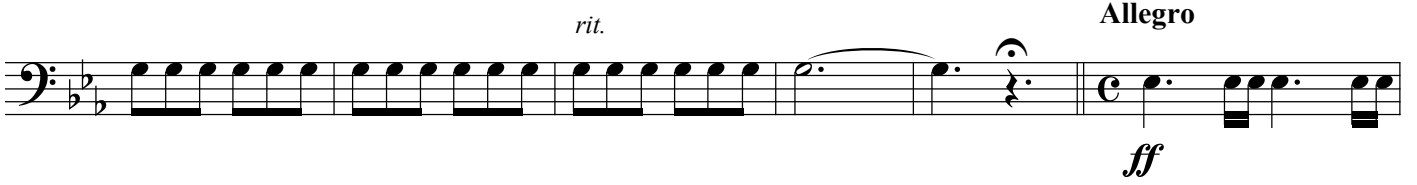
José Alexandrino de Sousa
(1895 - 1960)

Andante

f *p* *f* *rit.* *a tempo* *Andantino* *p* *rit.* *a tempo*

Andante moderato

p *mf* *cresc.* *p*



First musical staff in bass clef, key signature of two flats, and 2/4 time signature. It begins with a whole note G2, followed by a half note G2, and then a series of eighth notes: G2, F2, E2, D2, C2, B1, A1, G1. The final eighth note is marked with a *p* dynamic.

Second musical staff in bass clef, continuing the eighth-note pattern from the first staff.

Third musical staff in bass clef, continuing the eighth-note pattern. It ends with a *mf* dynamic marking.

Fourth musical staff in bass clef. It continues with eighth notes, then has a quarter rest, followed by dotted quarter notes G2, F2, E2, D2, C2, B1, A1, G1. It ends with a *ff* dynamic marking.

Fifth musical staff in bass clef. It features a triplet of eighth notes G2, F2, E2, followed by a quarter note G2, a quarter rest, a half note G2, and another triplet of eighth notes G2, F2, E2. The final triplet is marked with a *ff* dynamic.

Sixth musical staff in bass clef. It starts with a whole note G2, followed by eighth notes G2, F2, E2, D2, C2, B1, A1, G1. The final eighth note is marked with a *ff* dynamic.

Seventh musical staff in bass clef. It begins with a half note G2, followed by quarter notes G2, F2, E2, D2, C2, B1, A1, G1. The final eighth note is marked with a *ff* dynamic.

Eighth musical staff in bass clef. It starts with a half note G2, followed by quarter notes G2, F2, E2, D2, C2, B1, A1, G1. The final note is a whole note G2 with a fermata.