

# Tönet ihr Pauken, erschallt ihr Trompeten

## Chor 1

Christoph Graupner

Viola



8



15



22



29



36



43



50



56



63



70

78

86

93

100

107

114

121

127

Recitativo 1 tacet

da capo

# Aria 1

sordino

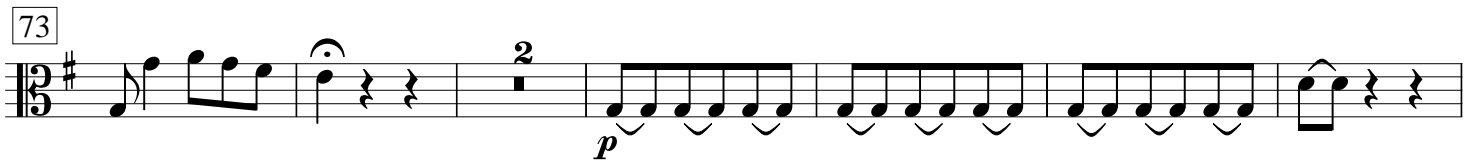
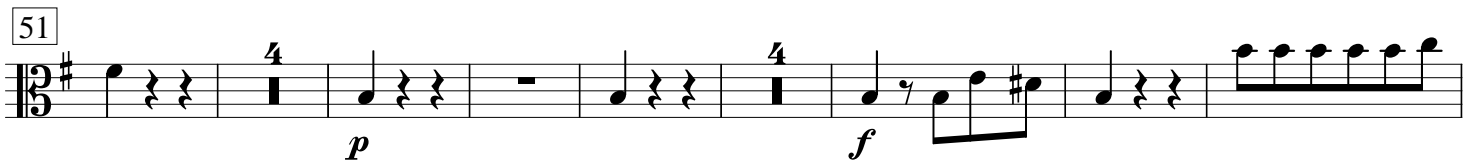
10



Recitativo 2 tacet

da capo

## Aria 2



Recitativo 3 tacet

da capo

## Aria 3

5

11

17

24

*p* *f* *p* *f* *p*

*f* *p*

*f*

*f*

Recitativo 4 tacet

## Aria 4

6

11

18

26

36

43

49

*p* *f*

*p* *f*

*f*

*f*

56 *f*

61 *f* *tr*

69 *f* 2

da capo

## Aria 5

Recitativo 5 tacet

7 *p*

14 *f* *pp*

24 *f*

34 *f*

42

48

Recitativo 6 tacet

## Aria 6

7

13

20

26

33

41

*f p f p f p f p f p*

50

*f p f p f p f p f p f p f p f p*

59

68

78

*p f*

85

*f p f p f p f p*

95

*f p f p f p f p f p f p f p f p f p f p*

105

*f p f p*

115

121

127

137

146

153

179

Recitativo 7 tacet

da capo

### Aria 7

7

14

20



26 Musical notation for measures 26-31. Measure 26 has a whole rest. Measures 27-31 show a melodic line starting with a half note G4, followed by quarter notes A4, B4, C5, B4, A4, G4, F4, E4, D4. Dynamics include *f* and *p*. There are accents on the final two notes.

32 Musical notation for measures 32-36. Measures 32-36 show a melodic line with various intervals and dynamics. Measures 32 and 34 have accents.

37 Musical notation for measures 37-42. Measures 37-42 show a melodic line with various intervals and dynamics. Measure 42 has a whole rest.

43 Musical notation for measures 43-50. Measures 43-50 show a melodic line with various intervals and dynamics. Measure 50 has a triplet of eighth notes.

51 Musical notation for measures 51-55. Measures 51-55 show a melodic line with various intervals and dynamics. Measures 51, 53, 54, and 55 have accents.

56 Musical notation for measures 56-61. Measures 56-61 show a melodic line with various intervals and dynamics. Measures 56, 58, 59, 60, and 61 have accents.

62 Musical notation for measures 62-67. Measures 62-67 show a melodic line with various intervals and dynamics. Measure 62 has accents. Measure 63 has a fermata. Measure 67 has a whole rest.

68 Musical notation for measures 68-73. Measures 68-73 show a melodic line with various intervals and dynamics. Measures 68, 69, 70, 71, 72, and 73 have accents.

74 Musical notation for measures 74-79. Measures 74-79 show a melodic line with various intervals and dynamics. Measure 74 has a whole rest. Measure 79 has accents.

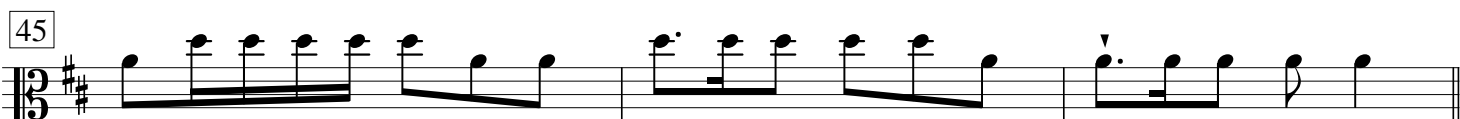
80 Musical notation for measures 80-85. Measures 80-85 show a melodic line with various intervals and dynamics. Measures 80, 82, 83, 84, and 85 have accents. Measure 81 has a whole rest. Measure 82 has a sharp sign.

86 Musical notation for measures 86-91. Measures 86-91 show a melodic line with various intervals and dynamics. Measures 86, 88, 89, 90, and 91 have accents. Measure 87 has a whole rest. Measure 88 has a sharp sign. Measure 91 has a double bar line.

**Recitativo 8 tacet**

**da capo**

# Chor 2



da capo