

Concerto grosso Op. VIII/6

Violino II del Concertino

Giuseppe Torelli (1658 - 1709)

[1.] Grave

[2.] Vivace

6

8

11

14 *Soli*

16

18 *tr*

21 *Soli*

24

26

28

30

Violino II del Concertino

2

32

35 *Soli*

38

41

44

46

49

p

Detailed description: This block contains the first system of musical notation for the Violino II part, covering measures 32 to 49. It consists of seven staves. The key signature is one flat (B-flat). The first staff (measures 32-34) features a melodic line with eighth and quarter notes. The second staff (measures 35-37) is marked *Soli* and contains a series of dotted quarter notes with slurs. The third staff (measures 38-40) continues with eighth notes and slurs. The fourth staff (measures 41-43) includes a sharp sign and slurs. The fifth staff (measures 44-46) features eighth notes and slurs. The sixth staff (measures 47-49) includes a *p* dynamic marking and ends with a double bar line.

[3.] Largo

Solo

7

15

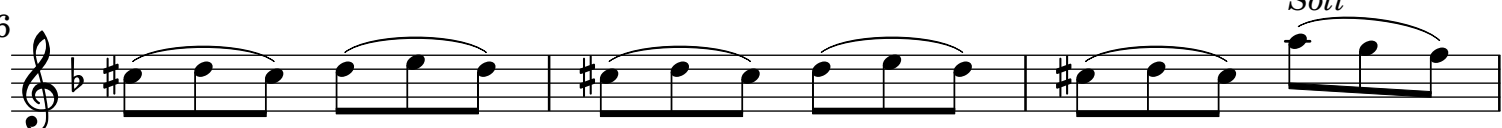
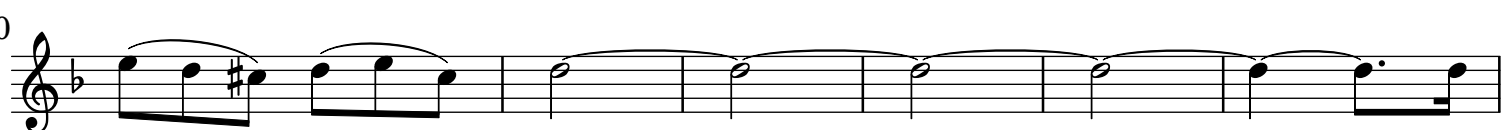
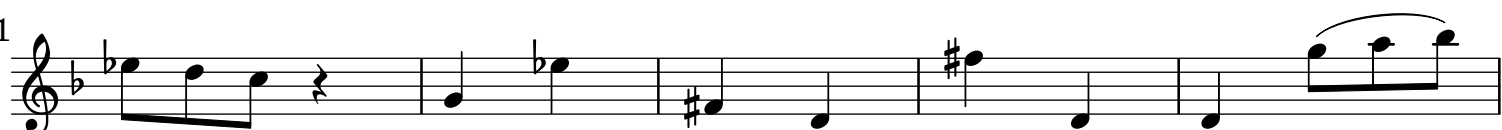
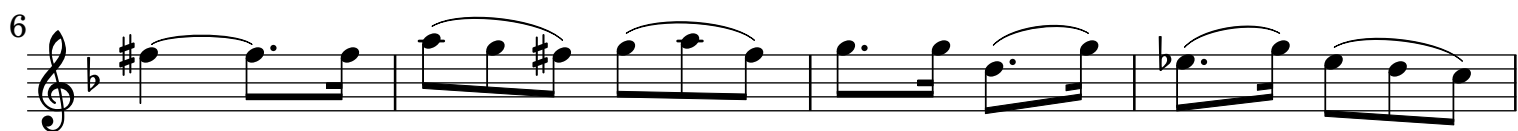
22

25

28

Detailed description: This block contains the second system of musical notation, starting with a section marked [3.] Largo. It consists of five staves. The first staff (measures 10-14) is marked *Solo* and features a 7-measure rest followed by a melodic line. The second staff (measures 15-21) contains eighth notes with slurs. The third staff (measures 22-24) features sixteenth notes with slurs. The fourth staff (measures 25-27) continues with sixteenth notes and slurs. The fifth staff (measures 28-31) concludes the section with a final note and a sharp sign.

[4.] Vivace



Violino II del Concertino

4

49

53

56

59

62 *Soli*

66

70 *Tutti* *tr*

74 *tr*

78

81

84

87

Detailed description: This image shows a page of a musical score for Violino II. The score is written on ten staves, each beginning with a measure number. The key signature is one flat (B-flat). The music consists of eighth and sixteenth notes, often beamed together in groups. Slurs are used to indicate phrasing across several notes. Trills are marked with 'tr' above notes in measures 70, 74, and 78. A 'Soli' instruction is placed above the first measure of the sixth staff. The score ends with a double bar line at the end of the tenth staff.