

w. 31 87.

37, 21.  
38, 1.

147.

Musica	
2398	
D	58



18 65 18 18

83

Name

Datum

...  
...  
...  
...  
...

...  
...  
...  
...  
...



No. 28.

Lauda Jerusalem: di Gio: Seimichen

Oboi

Violini

Viola

Trombe

Alto

Tenore

Basso

Organ

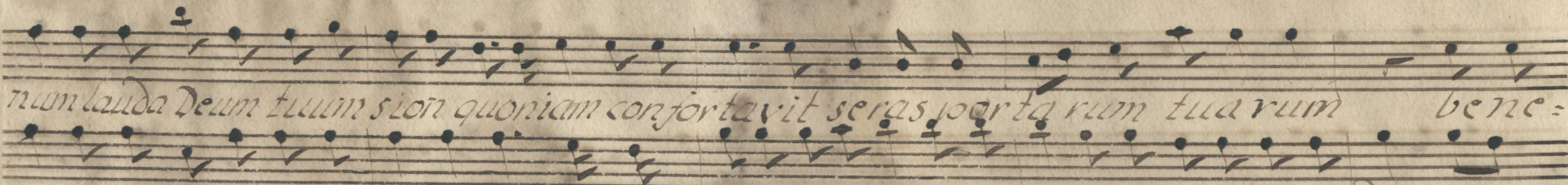
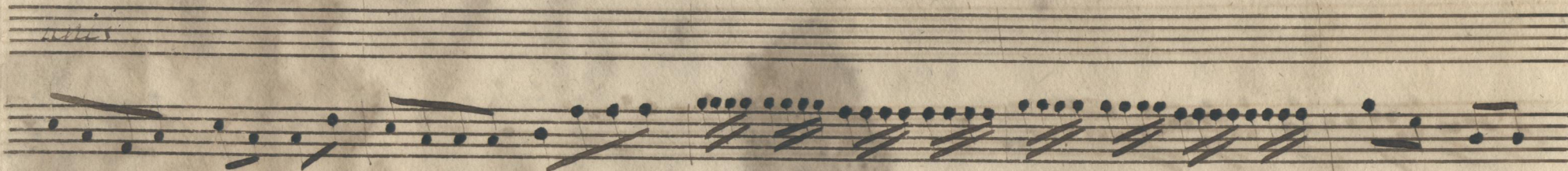
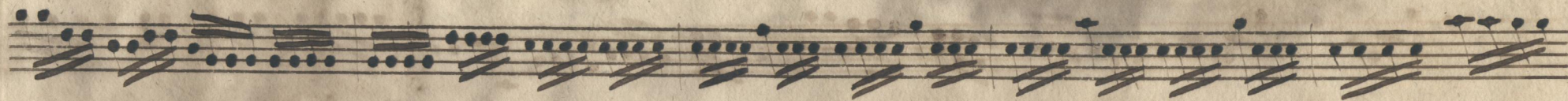
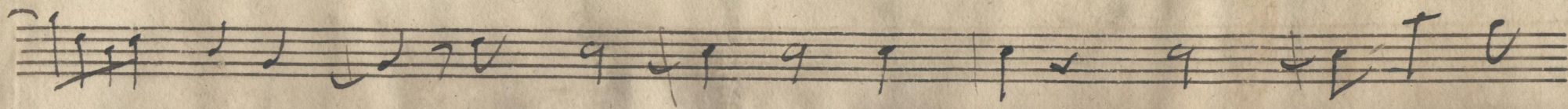
*Allegro*

6 6 6 7 6 7 6

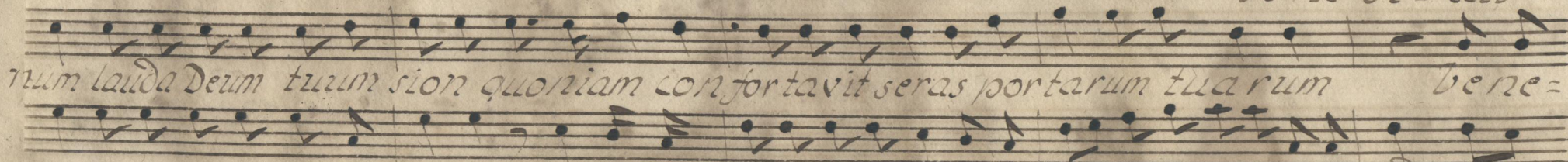


A handwritten musical score on aged paper, featuring ten staves. The top staff contains a treble clef, a key signature of one sharp (F#), and a common time signature (C). The notation includes various rhythmic values and rests. The second staff is labeled "Corno Obai" and contains a treble clef and a common time signature. The third and fourth staves contain dense, multi-measure rests, likely for woodwinds. The fifth and sixth staves are vocal parts with the lyrics "Lauda Se-rusalem Domi=" written in a cursive hand. The seventh and eighth staves are also vocal parts with the same lyrics. The ninth staff contains a treble clef and a common time signature, with dense notation and multi-measure rests. The tenth staff is empty. A large bracket on the left side groups the first four staves.

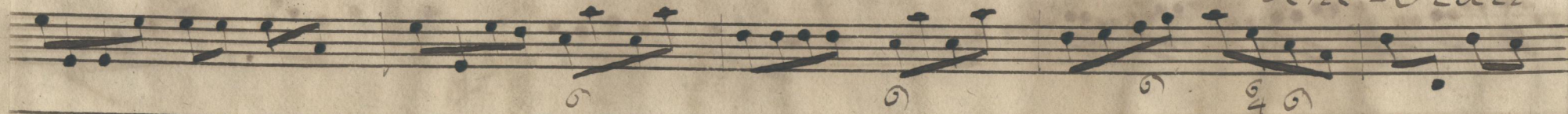




*non lauda Deum tuum sion quoniam confortavit seras portarum tuarum bene =  
bene di = xit*



*num lauda Deum tuum sion quoniam confortavit seras portarum tuarum bene =  
bene = dixit*





Handwritten musical score on aged paper, featuring multiple staves. The top two staves contain a vocal melody with various note values and rests. The third staff is a basso continuo line with dense figured bass notation. The fourth staff is a vocal line with the lyrics: *uris*. The fifth staff continues the vocal melody. The sixth and seventh staves contain the lyrics: *Dixit filiis tuis in te qui posu-erit fines tuos pacem et a-* and *filiis filiis qui posuit fines tuos pacem et*. The eighth staff continues the lyrics: *Dixit filiis tuis in te - qui posuit fines tuos pacem et*. The ninth staff contains the lyrics: *fi- liis*. The bottom staff is a basso continuo line with figured bass notation, including numbers like 7, 6, 3, #, 6, 6, 6, 6, #, #.



*uis*

*dipe frumenti satiat te qui e= mittit e= loquium suum terra velociter currit*

*adipe qui e mittit e= loquium suum terra velociter currit*



CUM

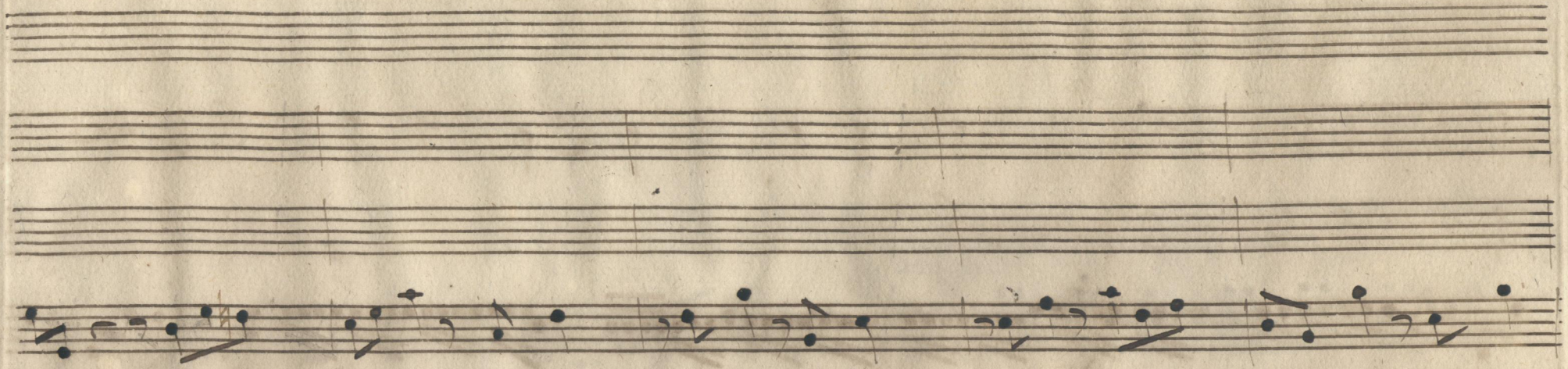
CUM OB

QUIS

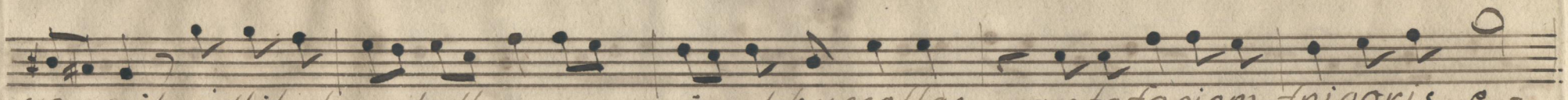
sermo eius qui dat nivem sicut la- nam nebulam sicut cinerem

sermo eius qui dat nivem sicut la nam nebulam sicut

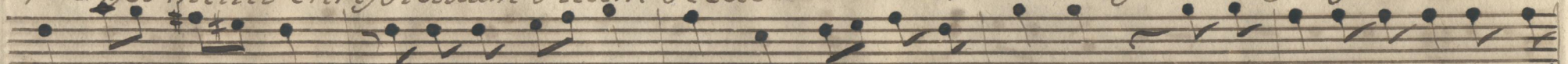




*uris*



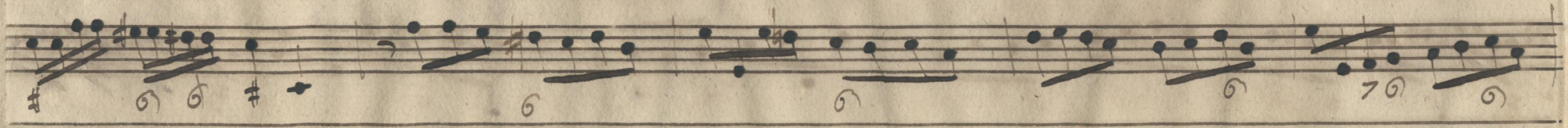
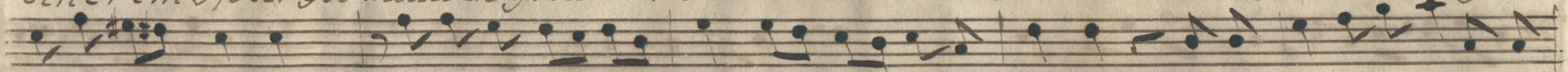
*spargit mittit chrySTALLUM suum sicut buccellas ante faciem frigoris e =*



*rem spar = git mittit chrySTALLUM suum sicut buccellas ante faciem frigoris*



*cinerem spargit mittit chrySTALLUM suum sicut buccellas ante faciem frigoris*





Handwritten musical score on aged paper. The score consists of several staves. The top two staves contain instrumental notation. The lower staves contain vocal lines with Latin lyrics. The lyrics are: "Ius quis sustinebit emittet verbum su- e- - Ius quis sus- stine- bit emittet verbum su- e- Ius quis sustine- bit emittet verbum su- e- Ius quis sus- sti ne- bit emittet verbum su-". The bottom of the page features figured bass notation: 5 6 / 3 4, 3 6 / 4 3 4, 5 6 / 4 3 4, 5 6 / 3 4, 6 / 6, 6 / 4 6.



*ria:*  
zum et li= que fa= ci= et e= a flabit spiritus ejus et  
*ria:*  
um et lique= fa= ciet e= a flabit spiritus e= jus et  
*ria:*  
zum et li= que fa= ci= et e= a flabit spiritus ejus et  
lique fa= ciet e= a flabit spiritus e= jus

120 6 5 6 7 6 6 7 6 6 9







Corno ob.

stittias et ju-di cia su- a Isra el non fecit taliter omni nati o-  
Jacob justitias et judi cia sua Isra el non fecit taliter omni nati-  
Jacob justitias et judi cia sua Isra- el non fecit taliter omni nati-  
76 76 76 76 76 76 76 76



Handwritten musical score on aged paper. The score consists of several staves. The top staff is a vocal line with a treble clef, a key signature of one sharp (F#), and a time signature of 3/4. It includes dynamic markings 'f' and 'Cresc' (Crescendo), and a 'Cresc.' marking further down. The second staff is a keyboard accompaniment with a grand staff (treble and bass clefs). The lower section of the score features three staves of vocal parts with lyrics in Latin: 'ni et judi:ci-a sua non manifesta- vit eis Gloria', 'oni et judi cia sua non manifestavit e- is glo ria', and 'oni et ju=di-cia sua non manife stavit e= is Glo= ria'. The bottom staff is a keyboard accompaniment with a grand staff. The page number '12' is written at the bottom center.



Handwritten musical notation on a single staff, consisting of rhythmic symbols and notes.

Handwritten musical notation on a single staff, featuring complex rhythmic patterns and notes.

Handwritten musical notation on a single staff, with notes and stems.

*Patri et filio et spiri-tui san-cto sicut erat in prin-ci-pi-*

*sicut erat in prin-*  
*Patri et fi-lio et spiri-tui san-cto sicut erat in prin-*

Handwritten musical notation on a single staff, including notes and stems.



A handwritten musical score on aged, yellowed paper. The score consists of several staves. The top two staves contain rhythmic notation and some handwritten notes. The middle section features a vocal line with Latin lyrics: "o et nunc et semper et in saecula saeculorum saeculorum saeculorum". Below the lyrics are several staves of accompaniment, including a keyboard part with figured bass notation (e.g., 66, 6 6, 6 6, 6, 6, 6 4 6, 5 6 / 3 4). The handwriting is in an old cursive style.



Handwritten musical notation on a five-line staff, featuring rhythmic markings and vertical bar lines.

Handwritten musical notation on a five-line staff, featuring a complex melodic line with many beamed notes.

unis

Handwritten musical notation on a five-line staff, featuring a melodic line with some accidentals.

lo = rum a = men et in saecula

Handwritten musical notation on a five-line staff, featuring a vocal line with lyrics.

lo = rum a = men et in saecula saeculo

Handwritten musical notation on a five-line staff, featuring a vocal line with lyrics.

rum a = men et in saecula saeculo

Handwritten musical notation on a five-line staff, featuring a vocal line with lyrics and some fingerings.







Sächs. Landesbibliothek  
Dresden  
Katholische Kirche

Wms. 2398  
D/58.



