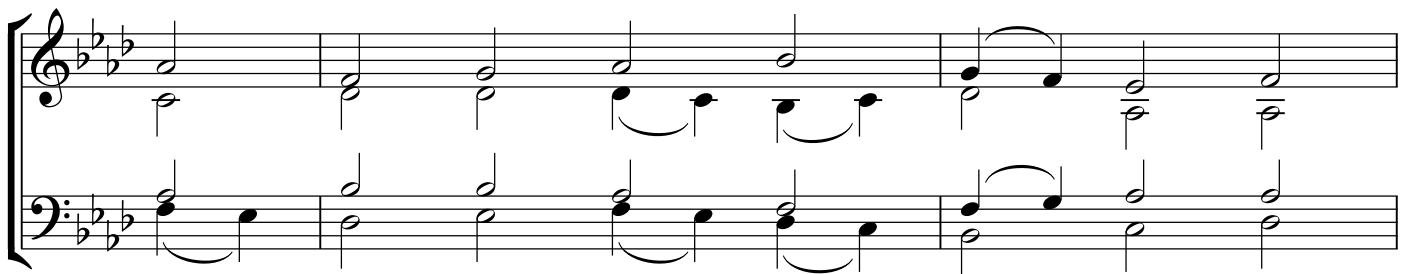
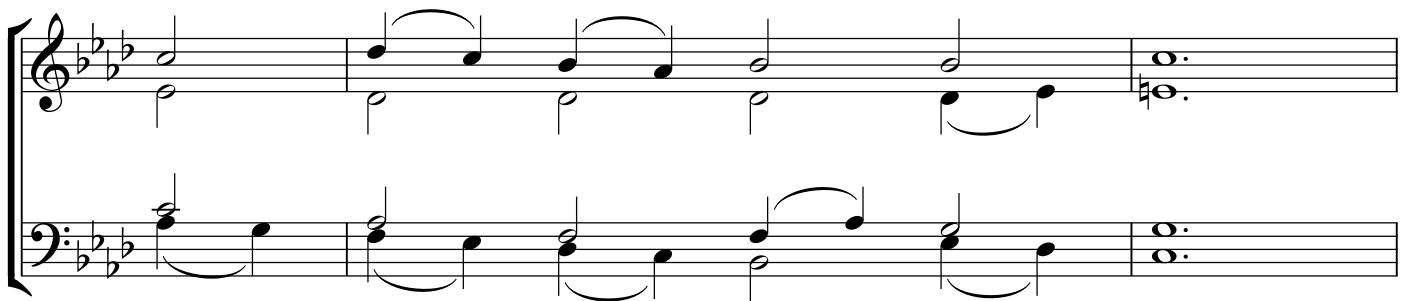
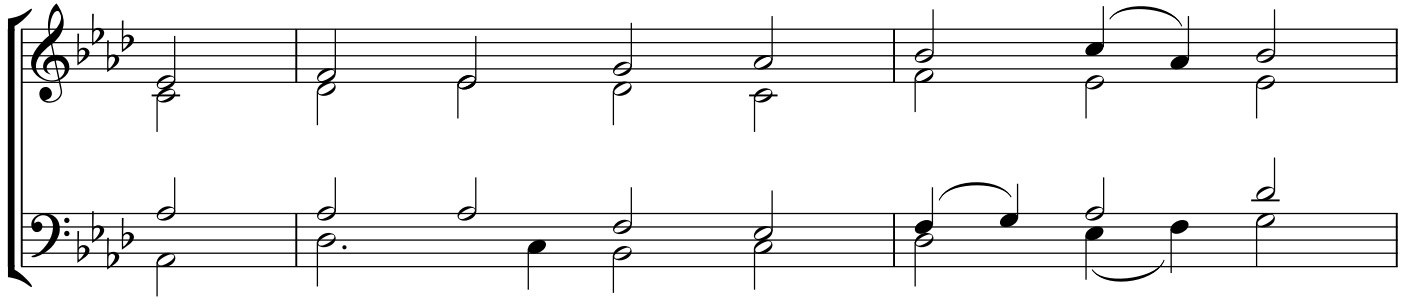


#1

CM

Mike Cutler

© 2015

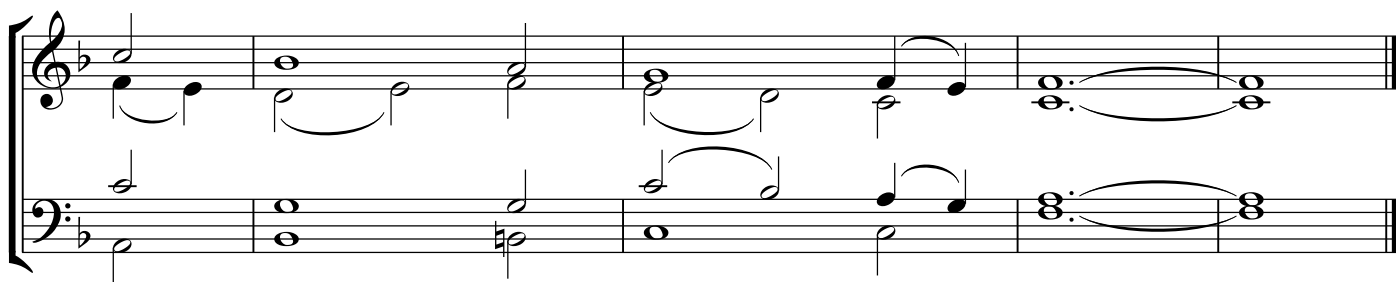
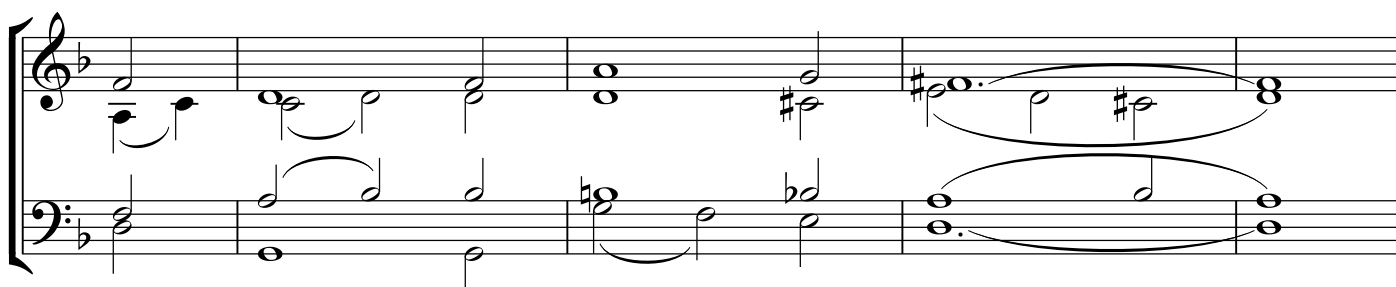
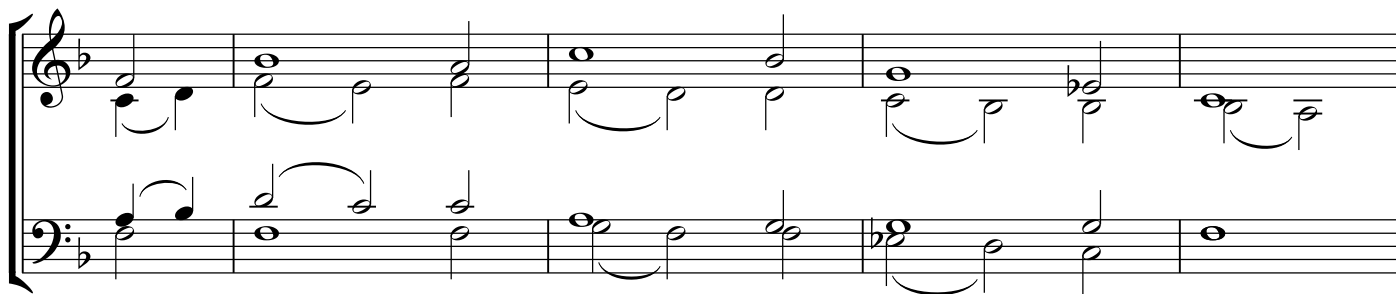


#2

CM

Mike Cutler

© 2015

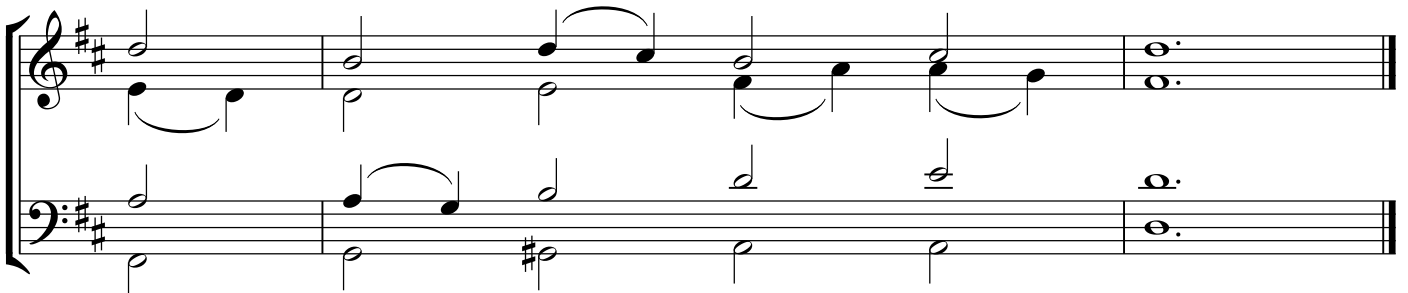
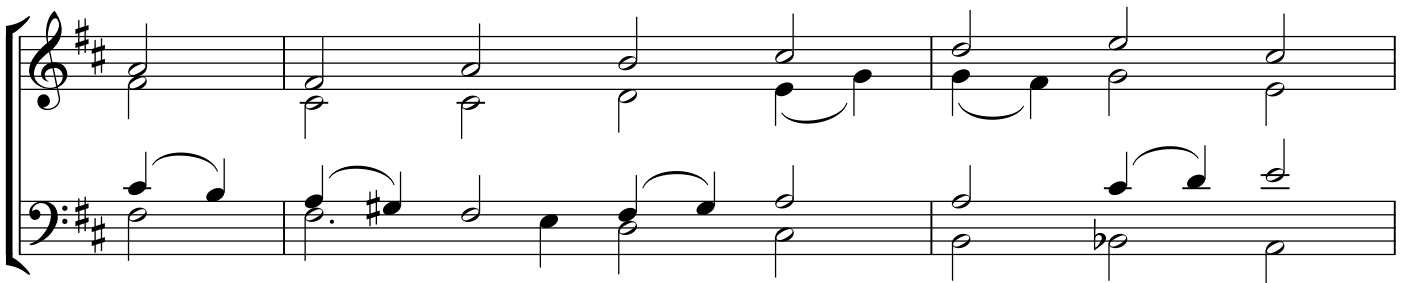
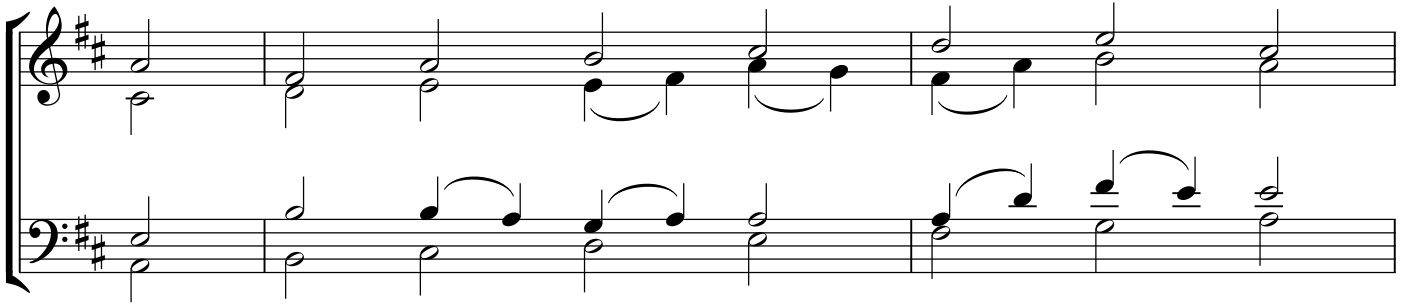


#3

CM

Mike Cutler

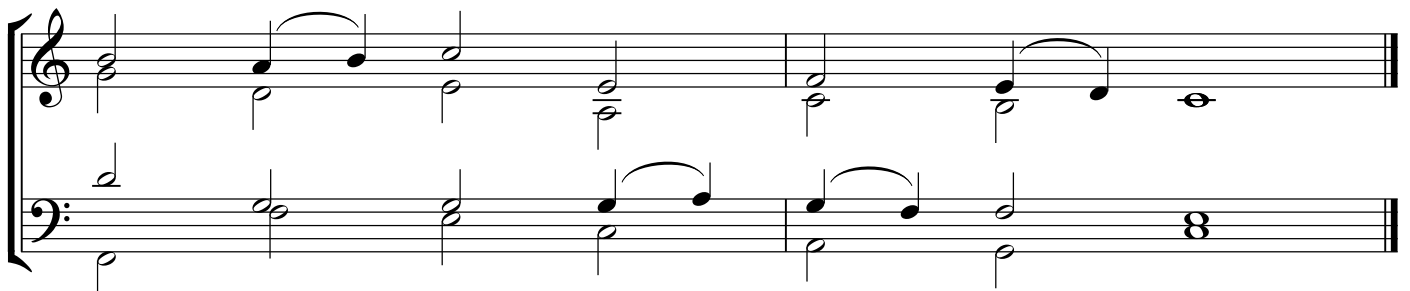
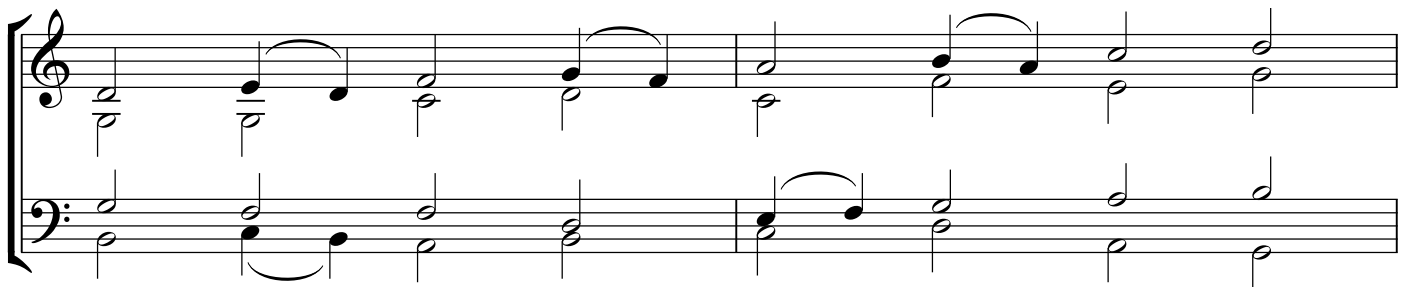
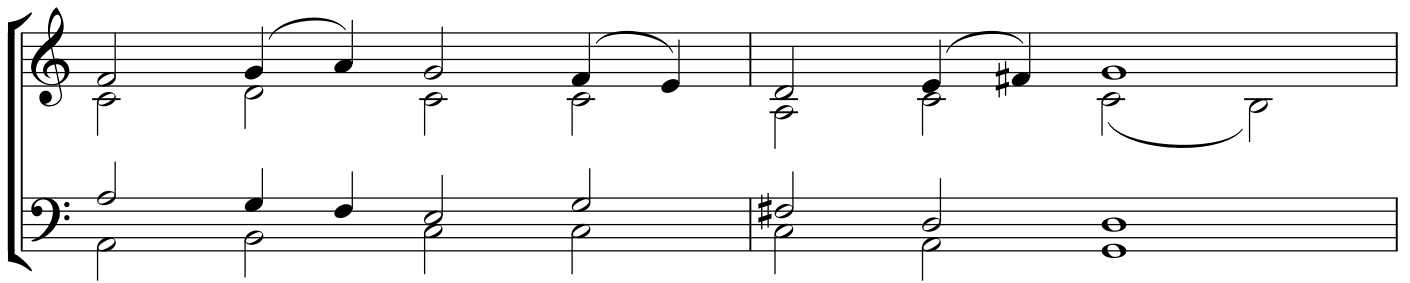
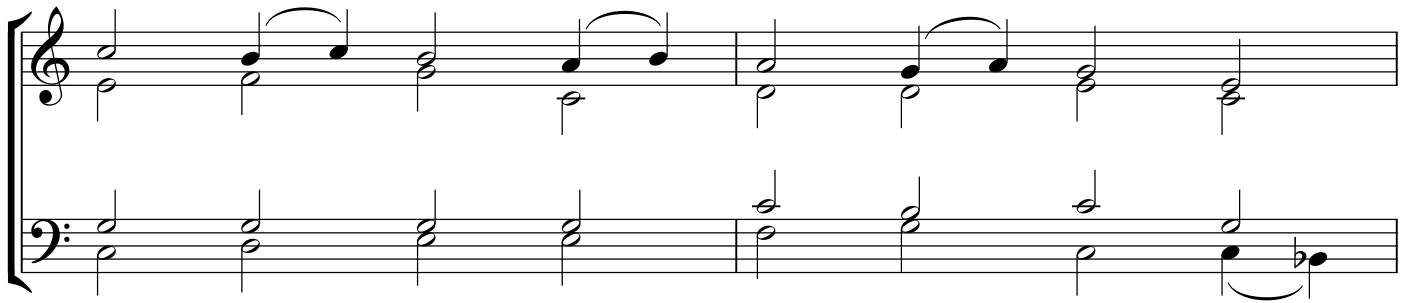
© 2015



#4

8 7 8 7

Mike Cutler
© 2015

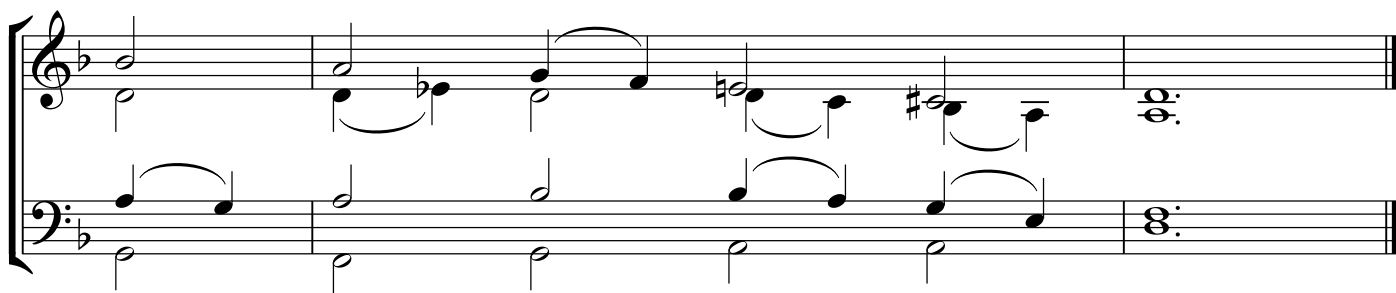
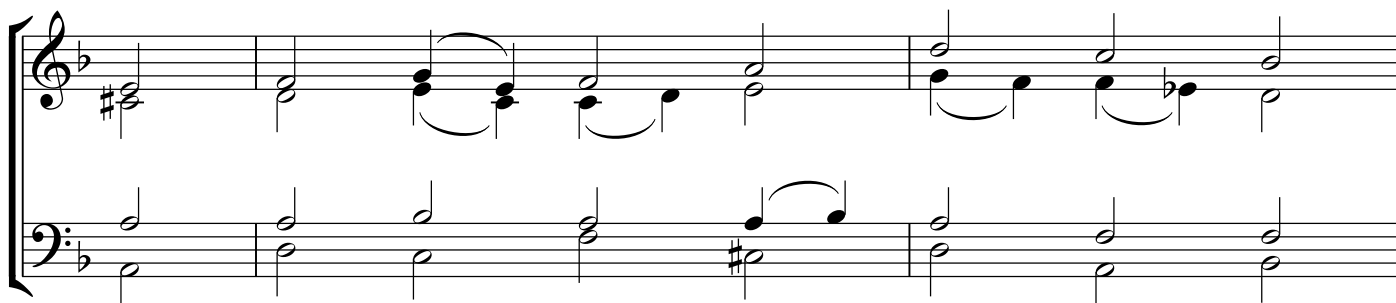


#5

CM

Mike Cutler

© 2015

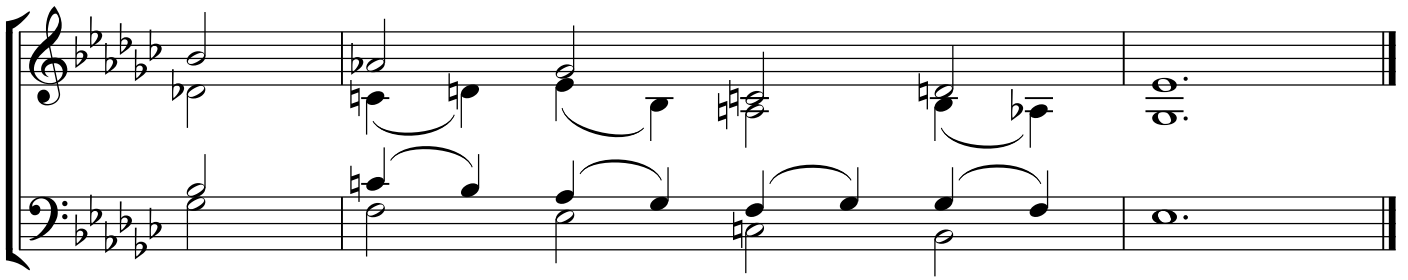
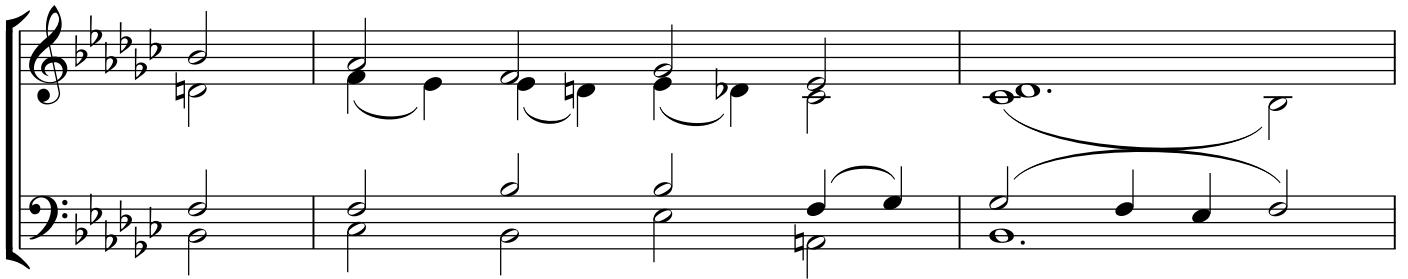
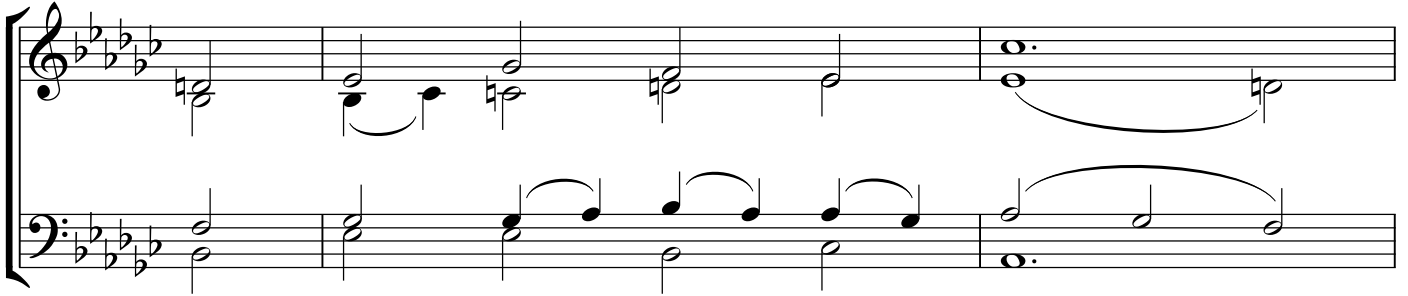


#6

SM

Mike Cutler

© 2015

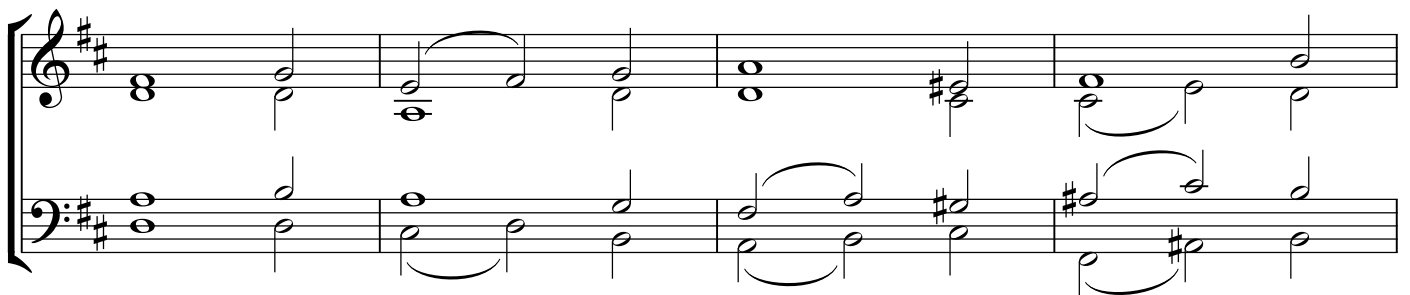
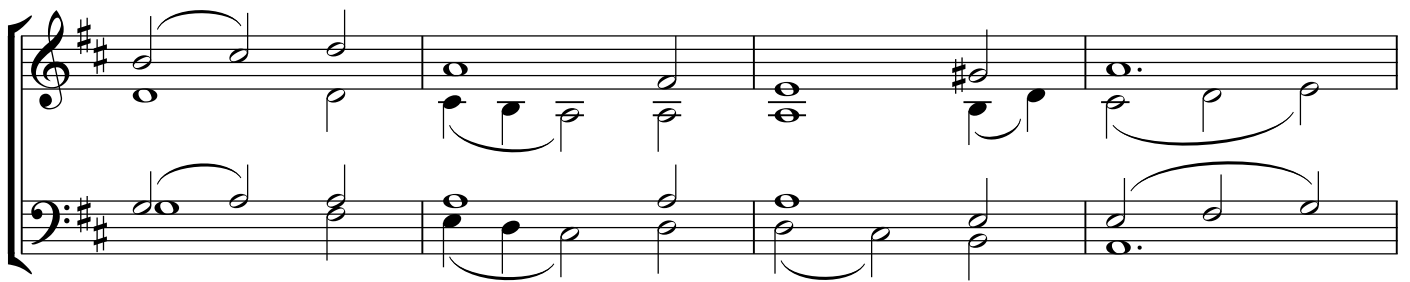
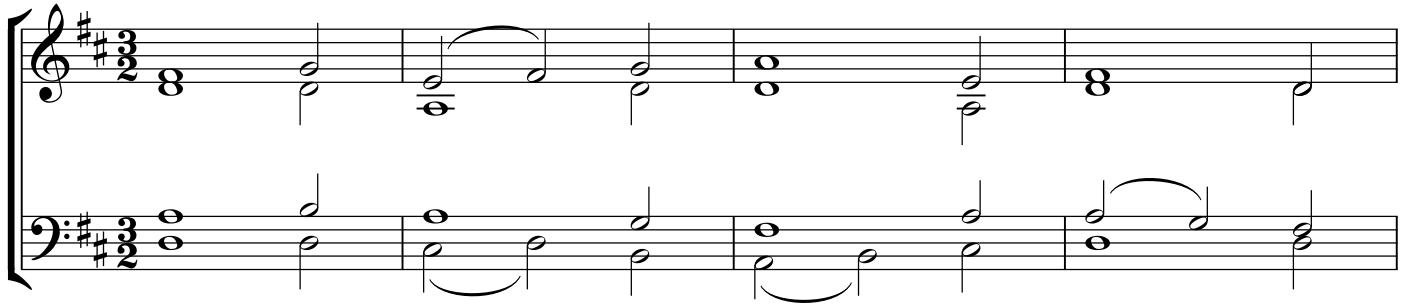


#7

8 7 8 7

Mike Cutler

© 2015

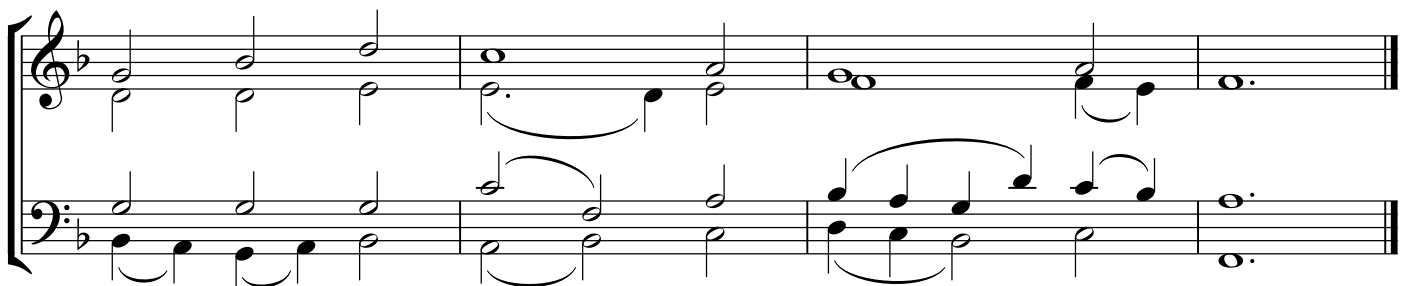
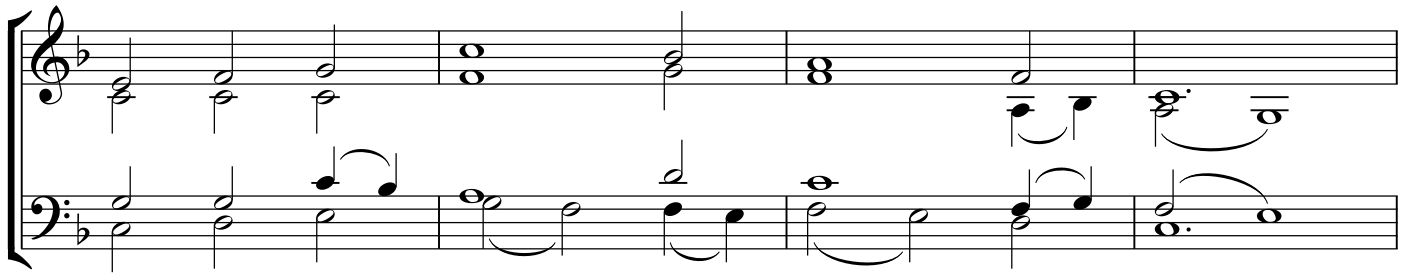
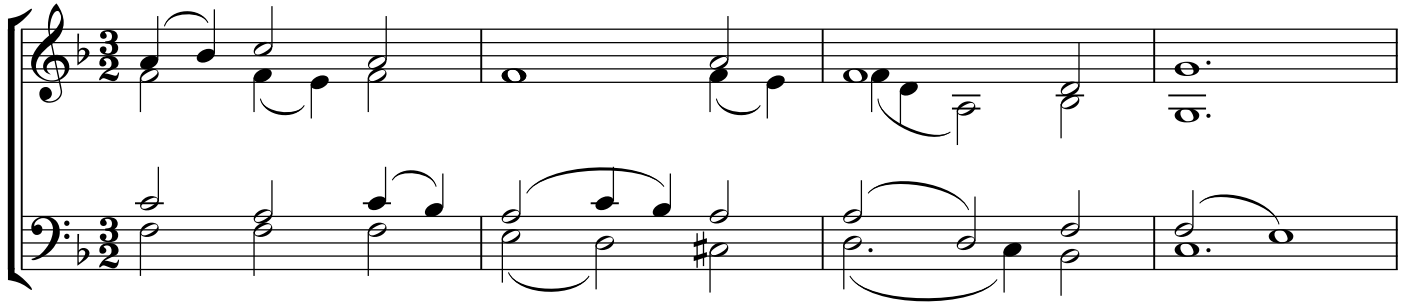


#8

LM

Mike Cutler

© 2015

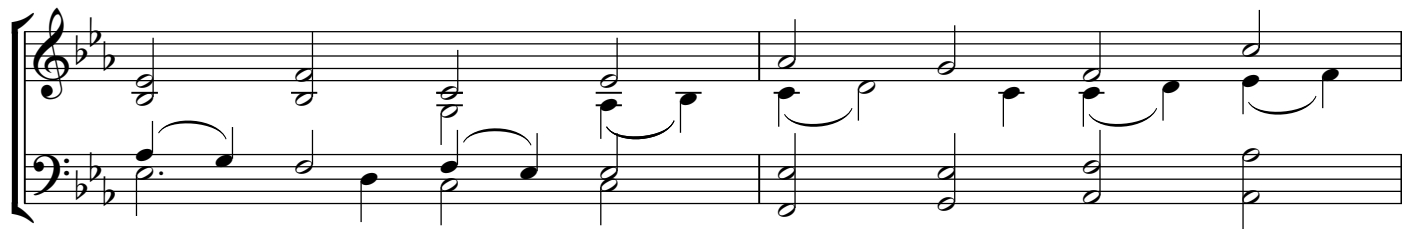


#9

LMD

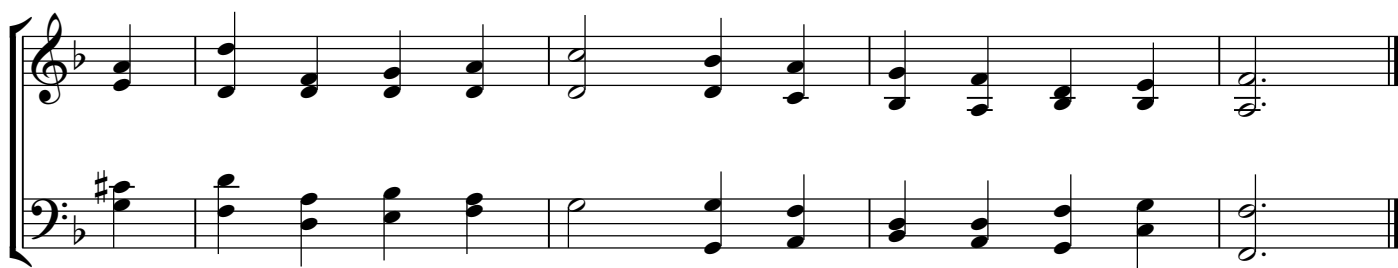
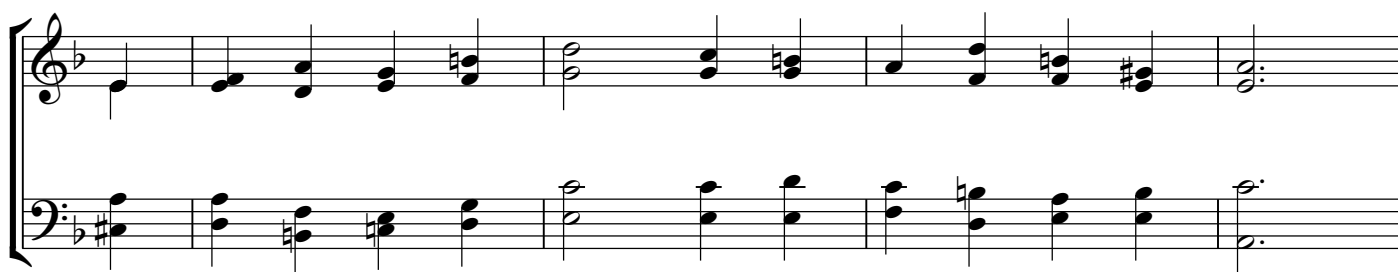
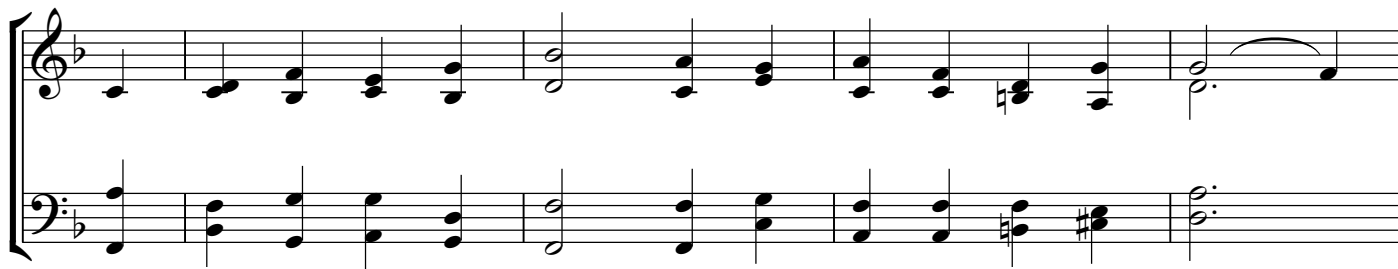
Mike Cutler

© 2015



#12
7 6 7 6 D

Mike Cutler
© 2015

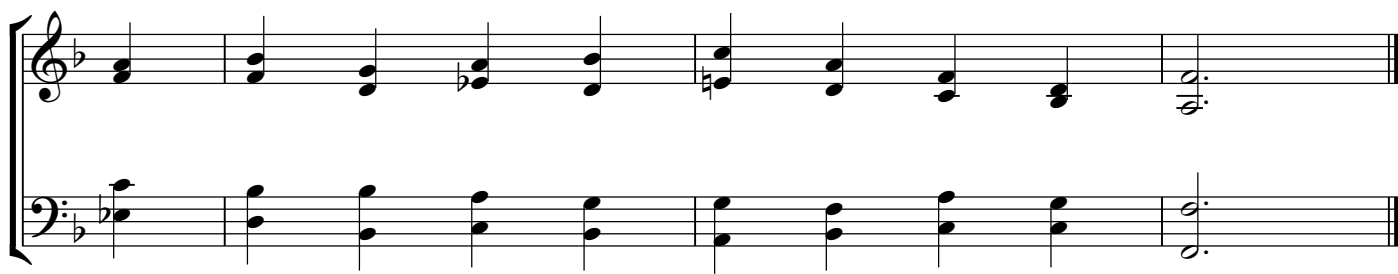
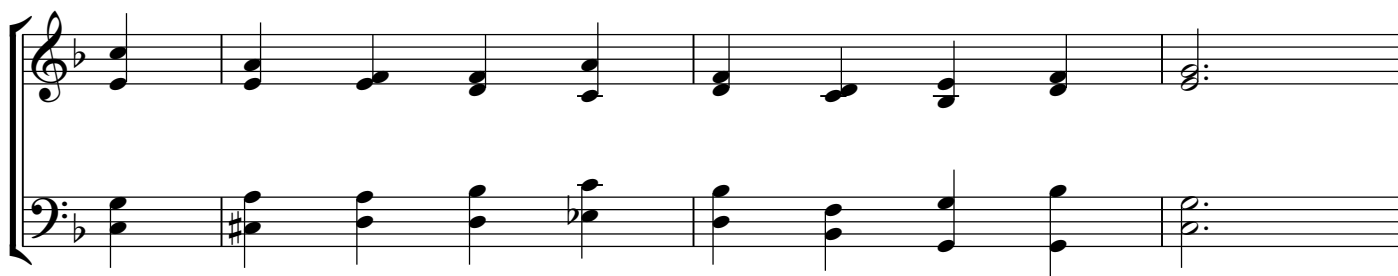


#13

10 10 10 10

Mike Cutler

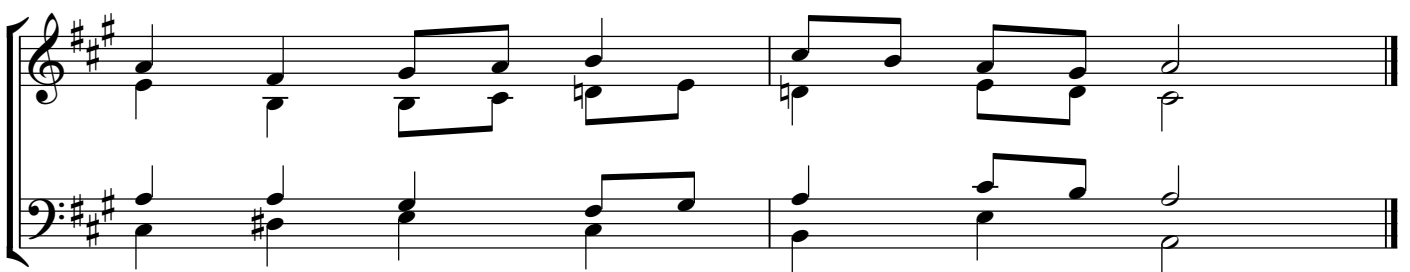
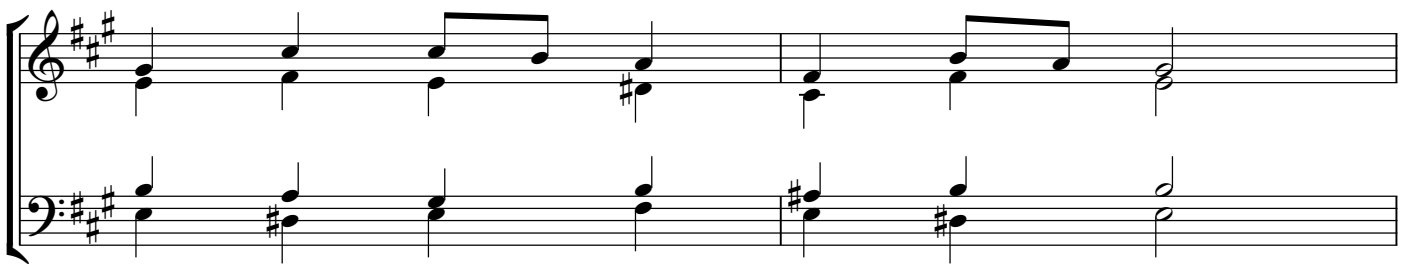
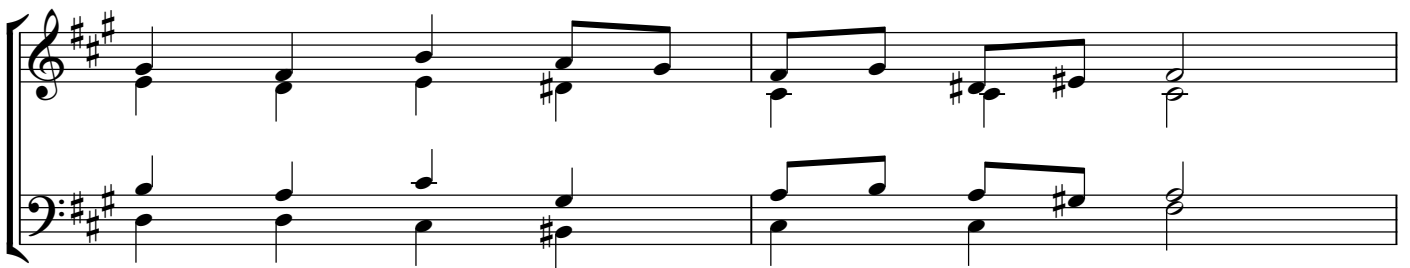
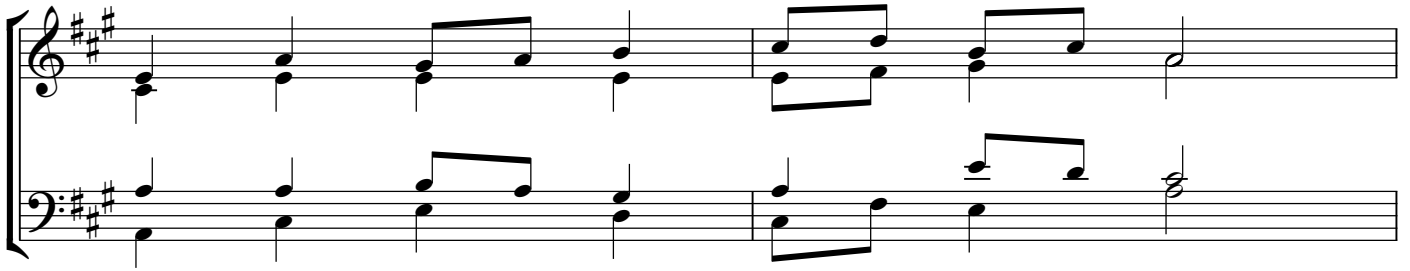
© 2015



#14

7777

Mike Cutler
© 2015

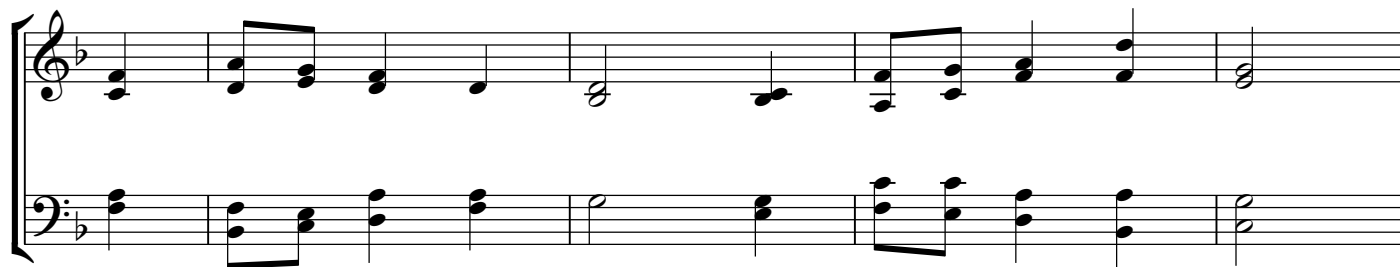


#15

6 6 8 6 Doubled

Mike Cutler

© 2015



10 10 10 10 10 10

© 2015

A musical score for the song 'The Rose Tree'. It consists of two staves, a treble staff and a bass staff, both in the key of B-flat major (two flats) and 4/4 time. The melody is written in the treble staff, and the accompaniment is in the bass staff. The piece is 16 measures long. The melody starts on a whole note G4, followed by a half note A4, a quarter note Bb4, and a quarter note A4. The accompaniment starts with a whole note chord of G2-Bb2-D3, followed by a half note chord of G2-Bb2-D3, and a quarter note chord of G2-Bb2-D3. The piece ends with a whole note chord of G2-Bb2-D3.

A musical score for the song 'The Rose Tree'. The score is written for a piano and voice. The piano part is in the left hand, and the voice part is in the right hand. The key signature is one flat (B-flat), and the time signature is 4/4. The piano part consists of a series of chords and single notes, while the voice part consists of a single melodic line. The score is divided into two systems, each with a piano part and a voice part. The piano part is written in a grand staff (treble and bass clefs), and the voice part is written in a single staff with a soprano clef. The piano part is written in a simplified style, using block letters for notes and rests. The voice part is written in a more traditional style, using a single line for the melody. The score is titled 'The Rose Tree' and is attributed to 'J. H. Johnson'.

A musical score for the song 'The Rose Tree'. It is written for voice and piano. The key signature has two flats (B-flat and E-flat), and the time signature is 4/4. The score consists of two systems. The first system contains the first four measures of the piece. The second system contains the next four measures. The melody is written in the treble clef, and the piano accompaniment is in the bass clef. The melody features a mix of eighth and quarter notes, with some rests. The piano part provides a harmonic foundation with chords and moving lines in the left hand.

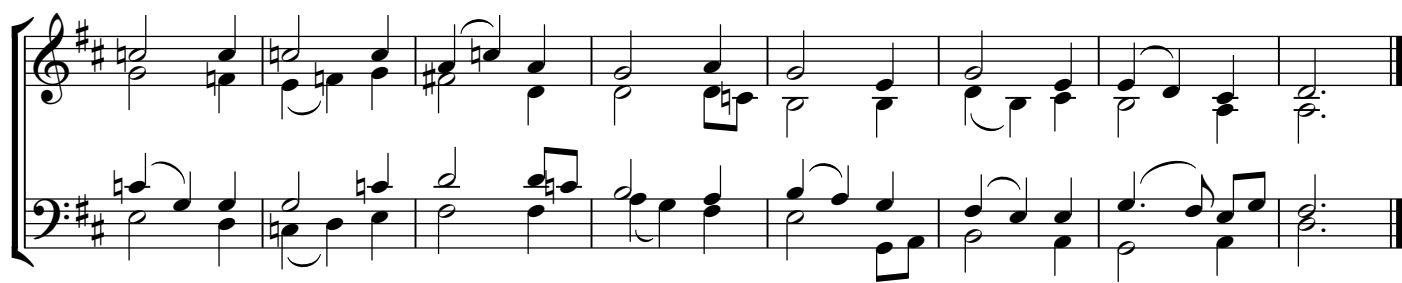
A musical score for the song 'The Rose Tree'. It consists of two staves, a treble staff and a bass staff, both in the key of B-flat major (two flats) and 4/4 time. The melody is written in the treble staff, and the accompaniment is in the bass staff. The piece begins with a treble clef and a key signature of two flats. The melody starts on a half note G4, followed by a half note F4, then a whole note E4. The accompaniment starts with a half note G3, followed by a half note F3, then a whole note E3. The piece concludes with a double bar line.

#17

8 7 8 7 Double

Mike Cutler

© 2015



#18

Long Meter Double

Mike Cutler

© 2015

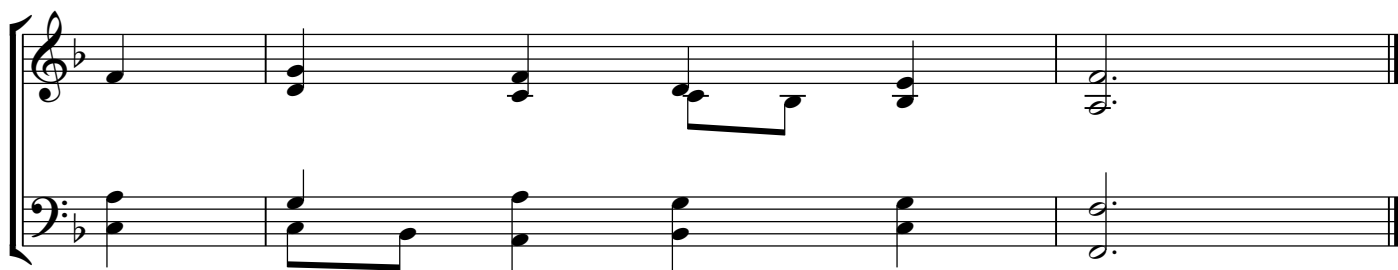
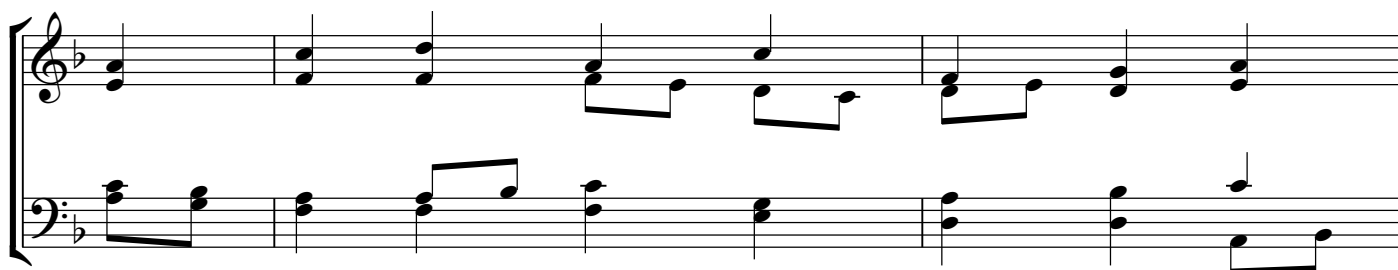
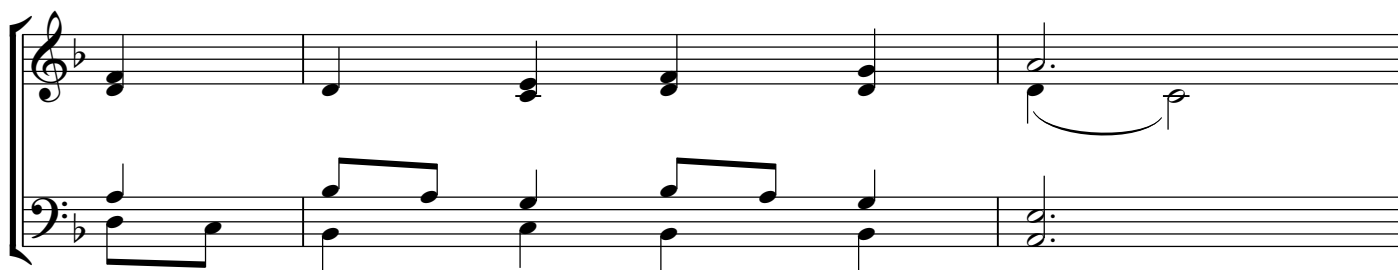
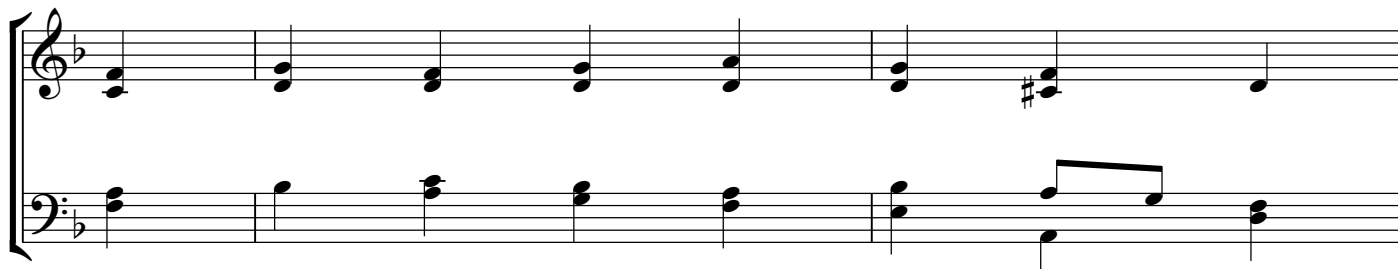


#19

Common Meter

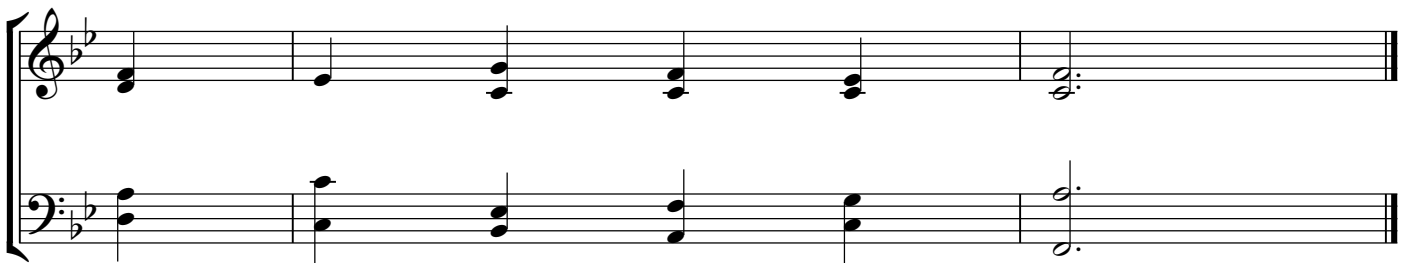
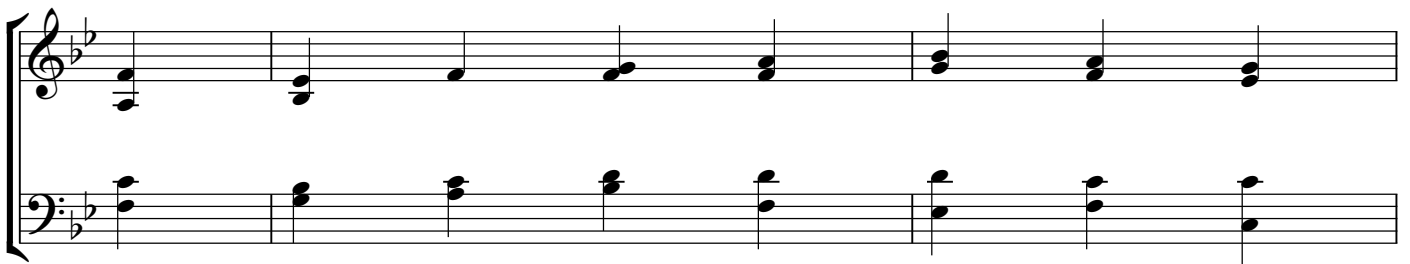
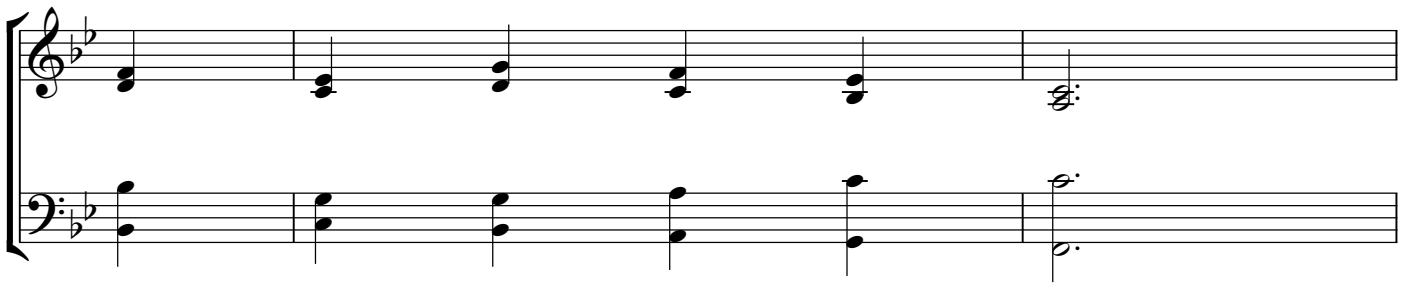
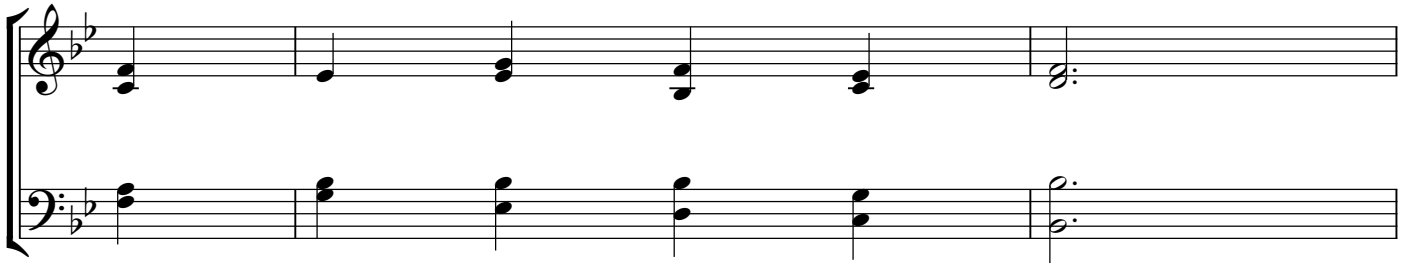
Mike Cutler

© 2015



#20
Short Meter

Mike Cutler
© 2015

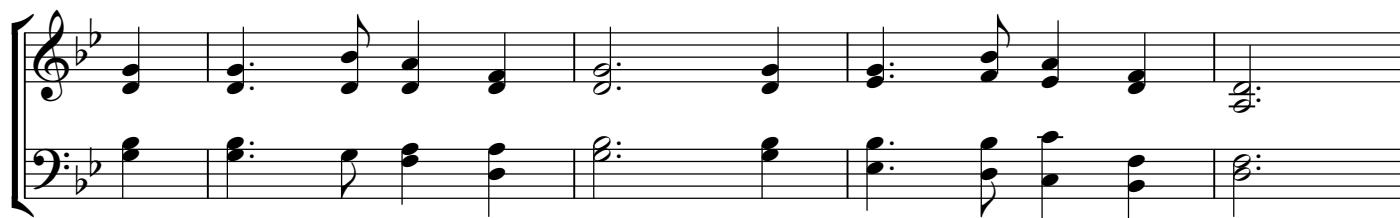


#21

6 6 6 6 8 8

Mike Cutler

© 2015

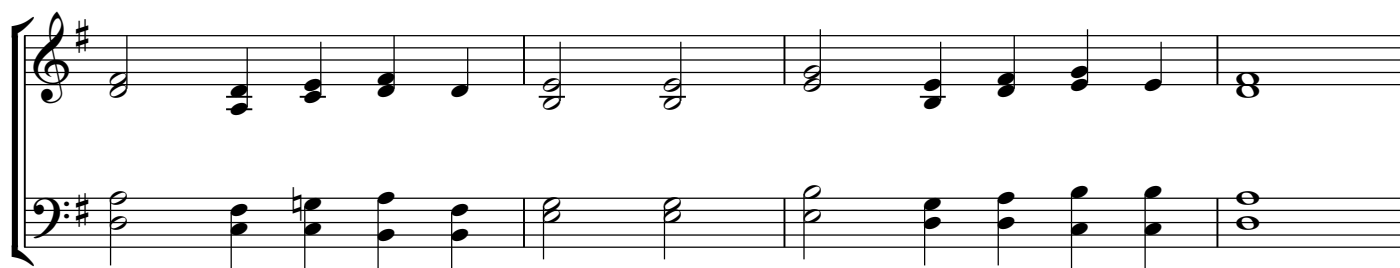


#22

7 6 7 6 Doubled

Mike Cutler

© 2015



#23

8 7 8 7 Doubled

Mike Cutler

© 2015

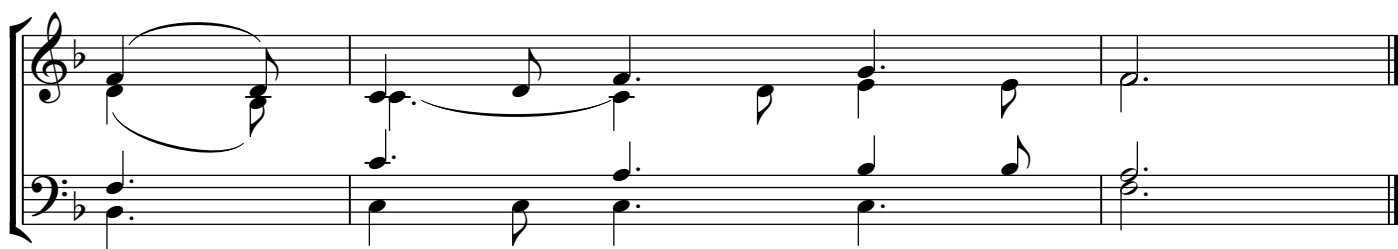
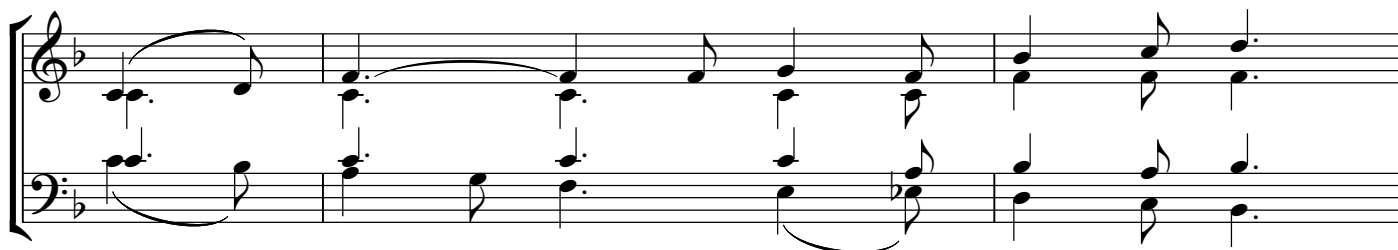
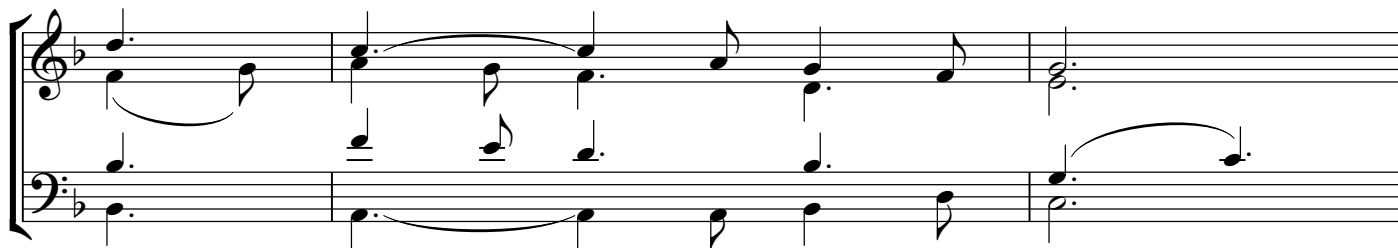
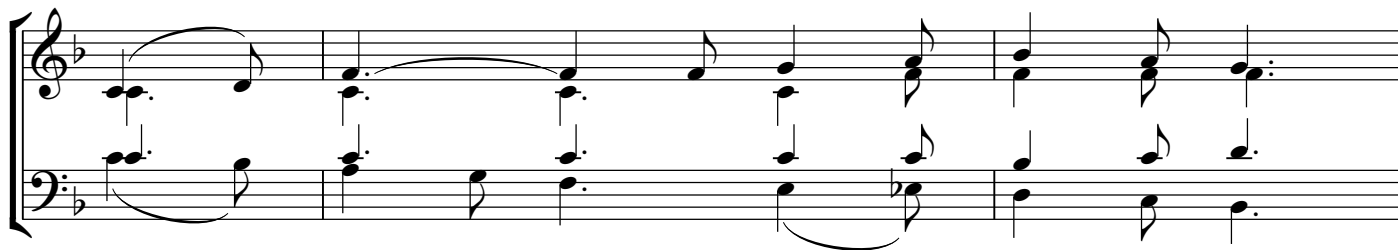


#24

CM with repeat

Mike Cutler

© 2015



SM with repeat

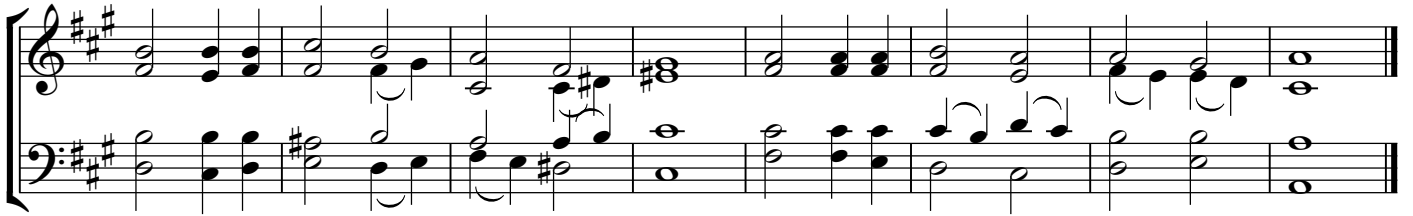
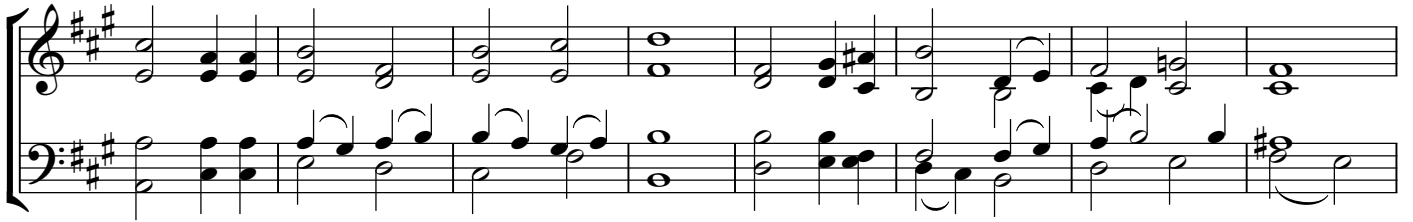
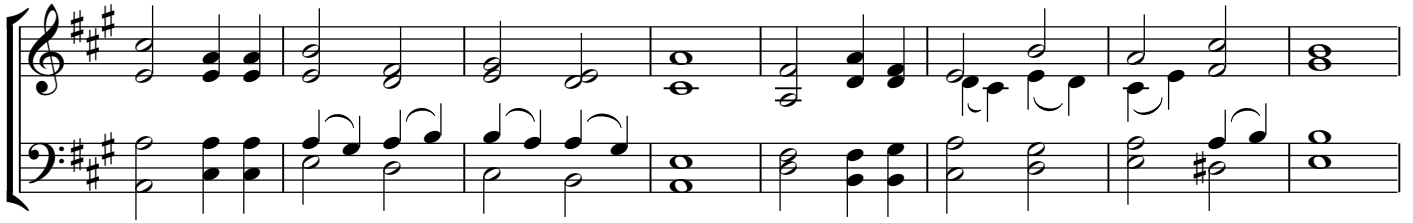
SM with repeat

A musical score for the song 'The Rose Tree'. It consists of two staves, a treble staff and a bass staff, both in the key of B-flat major (two flats) and 4/4 time. The melody is written in the treble staff, and the accompaniment is in the bass staff. The piece begins with a treble clef and a key signature of two flats. The melody starts on a whole note G4, followed by a half note A4, a quarter note Bb4, and a quarter note A4. This is followed by a half note G4, a half note F4, and a quarter note E4. The melody then moves to a half note D4, a half note C4, and a quarter note Bb3. The piece concludes with a half note A3, a half note G3, and a quarter note F3. The bass staff provides a simple harmonic accompaniment, starting with a whole note G3, followed by a half note A3, a quarter note Bb3, and a quarter note A3. This is followed by a half note G3, a half note F3, and a quarter note E3. The bass staff then moves to a half note D3, a half note C3, and a quarter note Bb2. The piece concludes with a half note A2, a half note G2, and a quarter note F2. The score is written in a standard musical notation style with a treble and bass clef, a key signature of two flats, and a 4/4 time signature. The melody is written in the treble staff, and the accompaniment is in the bass staff. The piece begins with a treble clef and a key signature of two flats. The melody starts on a whole note G4, followed by a half note A4, a quarter note Bb4, and a quarter note A4. This is followed by a half note G4, a half note F4, and a quarter note E4. The melody then moves to a half note D4, a half note C4, and a quarter note Bb3. The piece concludes with a half note A3, a half note G3, and a quarter note F3. The bass staff provides a simple harmonic accompaniment, starting with a whole note G3, followed by a half note A3, a quarter note Bb3, and a quarter note A3. This is followed by a half note G3, a half note F3, and a quarter note E3. The bass staff then moves to a half note D3, a half note C3, and a quarter note Bb2. The piece concludes with a half note A2, a half note G2, and a quarter note F2. The score is written in a standard musical notation style with a treble and bass clef, a key signature of two flats, and a 4/4 time signature.

#26

88 88 88

Mike Cutler
© 2015



#27

87 87 77

Mike Cutler

© 2015



#28

Short Metre

Mike Cutler

© 2015

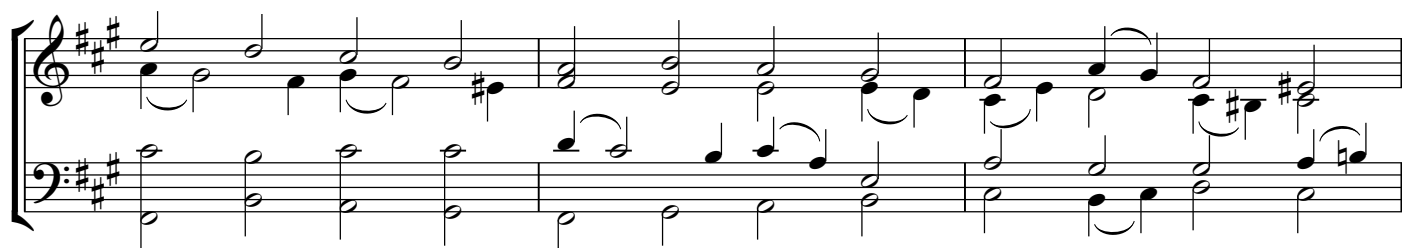


#29

Long Metre Double

Mike Cutler

© 2015



#30

11 11 11 11

Mike Cutler

© 2015

