

Praeludio - con la Suite

da

Gio: Bast. Bach.

auff' Clavier Manual.

Passaggio

Handwritten musical notation on a five-line staff. The notation includes various note values such as minims, crotchets, and quavers, along with rests and bar lines. A *resto* marking is present in the middle of the staff.

Handwritten musical notation on a five-line staff, continuing the piece with various note values and rests.

Handwritten musical notation on a five-line staff, continuing the piece with various note values and rests.

Handwritten musical notation on a five-line staff, continuing the piece with various note values and rests.



Allemande



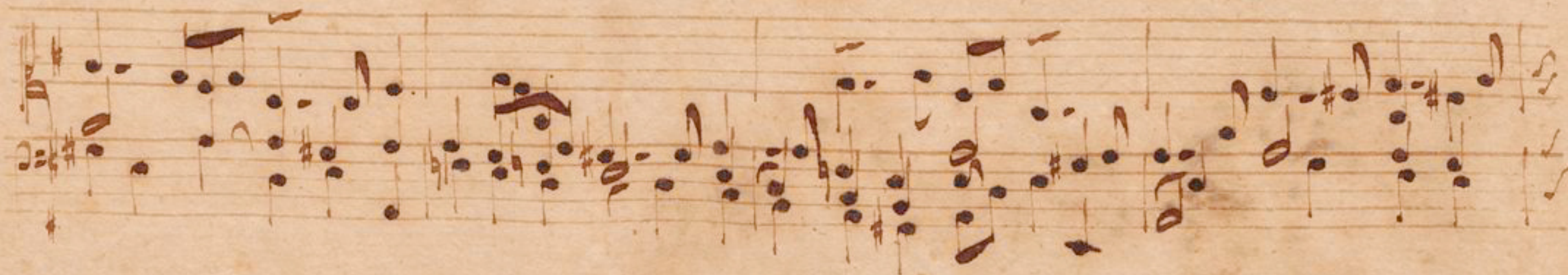
Handwritten musical notation on a five-line staff. The notation includes various note values such as eighth and sixteenth notes, as well as rests and accidentals (sharps and naturals). The music is written in a fluid, cursive style characteristic of 18th-century manuscript notation.

Handwritten musical notation on a five-line staff, continuing the piece. It features complex rhythmic patterns with many beamed notes and rests, typical of a fast-paced instrumental or dance piece.

Handwritten musical notation on a five-line staff, showing a continuation of the melodic and rhythmic themes. The notation is dense with notes and rests, maintaining the intricate texture of the piece.

Handwritten musical notation on a five-line staff, concluding the piece. It features a final cadence with a double bar line and a fermata-like flourish, indicating the end of the composition.

Courante.



Handwritten musical notation on two staves. The notation includes various note values, rests, and accidentals. The top staff begins with a treble clef and a key signature of one sharp (F#). The music features a mix of eighth and sixteenth notes, often beamed together, and some longer note values. The bottom staff begins with a bass clef and a key signature of one sharp (F#). It contains a variety of note values, including some longer notes with stems and beams.

Handwritten musical notation on two staves. The top staff begins with a treble clef and a key signature of one sharp (F#). It contains a variety of note values, including some longer notes with stems and beams. The bottom staff begins with a bass clef and a key signature of one sharp (F#). It contains a variety of note values, including some longer notes with stems and beams. The notation is dense and includes many accidentals.

Five empty musical staves, each consisting of five horizontal lines, arranged vertically. They are completely blank, with no notation or markings.

Sarabande.

The first system of handwritten musical notation for a Sarabande. It consists of two staves: a treble staff and a bass staff. The time signature is 3/2, and the key signature has one sharp (F#). The treble staff begins with a treble clef and a 3/2 time signature. The music features a melodic line with eighth and sixteenth notes, often beamed together, and a bass line with chords and single notes. There are some markings above the treble staff, possibly indicating fingerings or ornaments.

The second system of handwritten musical notation. It continues the piece with similar melodic and harmonic patterns. The treble staff shows more complex rhythmic figures and some slurs. The bass staff provides a steady accompaniment with chords and moving lines.

The third system of handwritten musical notation. This system features some more prominent slurs in the treble staff, suggesting a phrase or a specific articulation. The overall texture remains consistent with the previous systems, with a clear distinction between the melodic upper voice and the supporting bass line.

The fourth and final system of handwritten musical notation. It concludes the piece with a final cadence. The treble staff ends with a whole note chord, and the bass staff provides a final accompaniment. The notation is clear and legible throughout the piece.

Bourée

343

The first system of the manuscript consists of two staves. The top staff begins with a treble clef, a key signature of one sharp (F#), and a common time signature (C). The melody is written in a rhythmic style characteristic of the Baroque era, featuring eighth and sixteenth notes. The bottom staff begins with a bass clef and a key signature of one sharp (F#). The bass line provides harmonic support with a mix of eighth and sixteenth notes.

The second system continues the piece with two staves. The top staff features a treble clef, a key signature of one sharp (F#), and a common time signature (C). A notable feature in this system is a dense, multi-measure rest in the middle of the staff, indicated by a series of vertical lines and the number '10' written below it. The bottom staff continues with a bass clef and a key signature of one sharp (F#).

The third system consists of two staves. The top staff has a treble clef, a key signature of one sharp (F#), and a common time signature (C). The melody continues with various rhythmic patterns. The bottom staff has a bass clef and a key signature of one sharp (F#).

The fourth system consists of two staves. The top staff has a treble clef, a key signature of one sharp (F#), and a common time signature (C). The bottom staff has a bass clef and a key signature of one sharp (F#). The system concludes with a double bar line and a decorative flourish on the right side of the page.

Giga.

The image displays a handwritten musical score for a piece titled "Giga." The score is written on four systems of two staves each, using brown ink on aged, yellowed paper. Each system begins with a treble clef on the upper staff and a bass clef on the lower staff. The key signature is one sharp (F#), and the time signature is 12/8. The notation is highly rhythmic and melodic, featuring numerous slurs, ties, and complex phrasing. The first system includes a tempo marking "Giga." and a time signature of 12/8. The music is characterized by rapid sixteenth-note passages and frequent slurs, suggesting a fast and lively tempo. The paper shows signs of age, with some staining and discoloration, particularly towards the bottom edge.

Handwritten musical notation on a five-line staff. The upper staff contains a melody with eighth and sixteenth notes, including some beamed eighth notes. The lower staff contains a bass line with chords and eighth notes. The notation is in brown ink on aged paper.

Handwritten musical notation on a five-line staff, continuing the melody and bass line from the previous system. The notation is in brown ink on aged paper.

Handwritten musical notation on a five-line staff, continuing the melody and bass line from the previous system. The notation is in brown ink on aged paper.

Handwritten musical notation on a five-line staff, showing the final part of the piece. The notation is in brown ink on aged paper.

Handwritten flourish or signature.

Ex
Bibl. Regia
Berolin.