

# TRUMPET ARIA

(from: Arie 'Der Ewigkeit saphirnes Haus zicht', BWV 198.8)

for Trumpet and Organ

Score (04':50'')

Johann Sebastian Bach (1685 - 1750)

Arr. Michel Rondeau

Moderato ♩ = 60

Trumpet in C

Organ

This system shows the first four measures of the score. The Trumpet in C part is a single staff with a treble clef, a key signature of one sharp (F#), and a 3/4 time signature. It contains whole rests for all four measures. The Organ part consists of two staves (treble and bass clefs) with a treble clef, a key signature of one sharp, and a 3/4 time signature. The organ part begins with a melodic line in the right hand and a supporting bass line in the left hand.

C Tpt.

Org.

This system shows measures 5 through 8. The C Trumpet part remains a single staff with whole rests. The Organ part continues with its melodic and bass lines, showing some chromatic movement in the right hand.

C Tpt.

Org.

This system shows measures 9 through 11. The C Trumpet part remains a single staff with whole rests. The Organ part continues with its melodic and bass lines, featuring a prominent melodic phrase in the right hand.

C Tpt.

Org.

This system shows measures 12 through 15. The C Trumpet part remains a single staff with whole rests. The Organ part continues with its melodic and bass lines, concluding the system with a final melodic flourish in the right hand.

TRUMPET ARIA - BWV 198.8 - Bach - Score

2  
16

C Tpt.

Org.

This system covers measures 2 through 16. The C Trumpet part is silent, indicated by rests. The Organ part begins with a series of chords in the right hand and a steady eighth-note accompaniment in the left hand. The texture becomes more intricate as the piece progresses, with the right hand playing sixteenth-note patterns and the left hand providing a rhythmic foundation.

21

C Tpt.

Org.

This system covers measures 21 through 30. The C Trumpet part enters with a melodic line, starting with a quarter rest followed by a series of notes. The Organ part continues with its complex texture, featuring sixteenth-note runs in the right hand and a steady accompaniment in the left hand.

25

C Tpt.

Org.

This system covers measures 25 through 34. The C Trumpet part has a melodic line with some rests. The Organ part continues with its complex texture, featuring sixteenth-note runs in the right hand and a steady accompaniment in the left hand.

29

C Tpt.

Org.

This system covers measures 29 through 38. The C Trumpet part has a melodic line with some rests. The Organ part continues with its complex texture, featuring sixteenth-note runs in the right hand and a steady accompaniment in the left hand.

TRUMPET ARIA - BWV 198.8 - Bach - Score

33

C Tpt.

Org.

37

C Tpt.

Org.

41

C Tpt.

Org.

45

C Tpt.

Org.

TRUMPET ARIA - BWV 198.8 - Bach - Score

4  
49

C Tpt.

Org.

This system covers measures 4 to 49. The C Trumpet part consists of whole rests. The Organ part begins with a series of chords in the right hand and a simple bass line in the left hand. The texture becomes more intricate as the piece progresses, with the right hand playing chords and moving lines, and the left hand providing harmonic support.

54

C Tpt.

Org.

This system covers measures 54 to 63. The C Trumpet part has a melodic line with eighth and sixteenth notes. The Organ part continues with complex textures, featuring chords and moving lines in both staves.

59

C Tpt.

Org.

This system covers measures 59 to 63. The C Trumpet part has a melodic line with eighth and sixteenth notes. The Organ part continues with complex textures, featuring chords and moving lines in both staves.

63

C Tpt.

Org.

This system covers measures 63 to 72. The C Trumpet part has a melodic line with eighth and sixteenth notes. The Organ part continues with complex textures, featuring chords and moving lines in both staves.

TRUMPET ARIA - BWV 198.8 - Bach - Score

C Tpt.

Org.

67

67

tr

C Tpt.

Org.

71

71

C Tpt.

Org.

75

75

C Tpt.

Org.

80

80

TRUMPET ARIA - BWV 198.8 - Bach - Score

6

84

C Tpt.

Org.

This system contains measures 84 through 87. The C Tpt. part begins with a melodic line of eighth notes, followed by a dotted quarter note with a trill (tr) and a quarter rest. The Organ part features a complex texture with sixteenth-note patterns in the right hand and a more rhythmic bass line.

88

C Tpt.

Org.

This system contains measures 88 through 91. The C Tpt. part is mostly silent, with only a few notes in measure 91. The Organ part continues with intricate sixteenth-note passages in both hands, maintaining a steady harmonic accompaniment.

92

C Tpt.

Org.

This system contains measures 92 through 95. The C Tpt. part has a melodic line that ends with a trill (tr) and a quarter rest. The Organ part concludes with a final cadence, featuring sustained chords in the right hand and a descending bass line.

# TRUMPET ARIA

(from: Arie 'Der Ewigkeit saphirnes Haus zicht', BWV 198.8)

for Trumpet and Organ

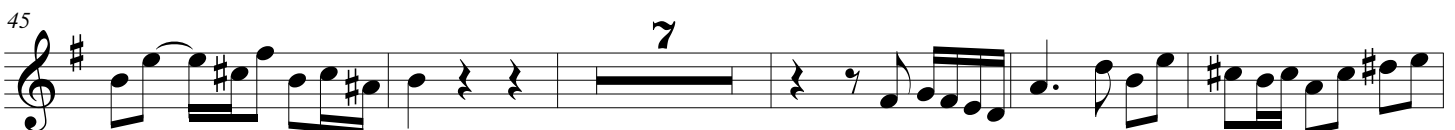
## Trumpet in C

Johann Sebastian Bach (1685 - 1750)

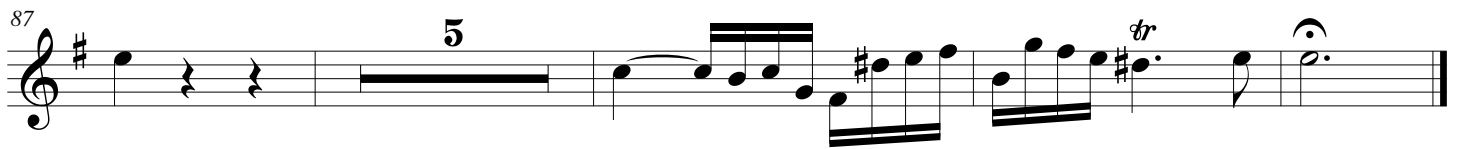
Arr. Michel Rondeau

Moderato ♩ = 60

20



## TRUMPET ARIA - BWV 198.8 - Bach - C Trumpet





# TRUMPET ARIA

(from: Arie 'Der Ewigkeit saphirnes Haus zicht', BWV 198.8)

for Trumpet and Organ

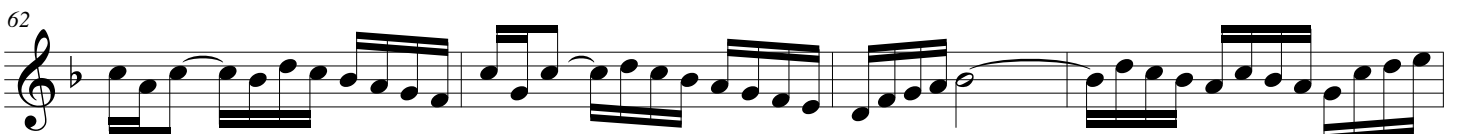
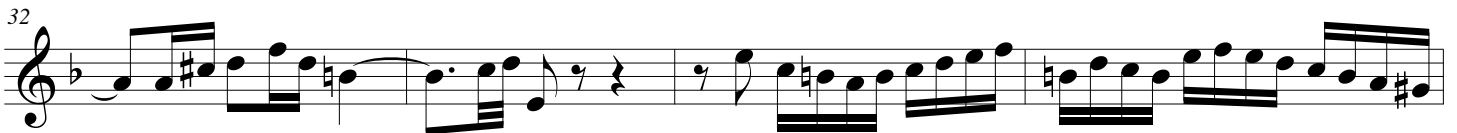
## Trumpet in D

Johann Sebastian Bach (1685 - 1750)

Arr. Michel Rondeau

Moderato ♩ = 60

20



TRUMPET ARIA - BWV 198.8 - Bach - D Trumpet

66

tr

71

3

79

7

83

tr

87

5

tr

# TRUMPET ARIA

(from: Arie 'Der Ewigkeit saphirnes Haus zicht', BWV 198.8)  
for Trumpet and Organ

## Organ

Johann Sebastian Bach (1685 - 1750)

Arr. Michel Rondeau

Trumpet in C

Moderato ♩ = 60

C Tpt.

Org.

C Tpt.

Org.

C Tpt.

Org.

TRUMPET ARIA - BWV 198.8 - Bach - Organ

2  
16

C Tpt.

Org.

Measures 2-16. The Trumpet part (C Tpt.) is mostly rests. The Organ part (Org.) features a complex texture with chords and melodic lines in both staves.

21

C Tpt.

Org.

Measures 21-25. The Trumpet part (C Tpt.) has a melodic line with a long note. The Organ part (Org.) continues with intricate accompaniment.

25

C Tpt.

Org.

Measures 25-29. The Trumpet part (C Tpt.) has a melodic line with eighth notes. The Organ part (Org.) continues with intricate accompaniment.

29

C Tpt.

Org.

Measures 29-33. The Trumpet part (C Tpt.) has a melodic line with eighth notes. The Organ part (Org.) continues with intricate accompaniment.

TRUMPET ARIA - BWV 198.8 - Bach - Organ

C Tpt.

Org.

Measures 33-36. The C Trumpet part (top staff) begins with a dotted quarter note, followed by eighth and sixteenth notes. The Organ part (bottom two staves) features a complex texture with sixteenth-note patterns in the right hand and eighth-note patterns in the left hand.

C Tpt.

Org.

Measures 37-40. The C Trumpet part (top staff) continues with eighth and sixteenth notes. The Organ part (bottom two staves) features a complex texture with sixteenth-note patterns in the right hand and eighth-note patterns in the left hand.

C Tpt.

Org.

Measures 41-44. The C Trumpet part (top staff) continues with eighth and sixteenth notes. The Organ part (bottom two staves) features a complex texture with sixteenth-note patterns in the right hand and eighth-note patterns in the left hand.

C Tpt.

Org.

Measures 45-48. The C Trumpet part (top staff) continues with eighth and sixteenth notes. The Organ part (bottom two staves) features a complex texture with sixteenth-note patterns in the right hand and eighth-note patterns in the left hand.

TRUMPET ARIA - BWV 198.8 - Bach - Organ

4  
49

C Tpt.

Org.

This system covers measures 4 to 49. The C Trumpet part is mostly rests. The Organ part features a complex texture with chords and moving lines in both staves.

54

C Tpt.

Org.

This system covers measures 54 to 58. The C Trumpet part has a melodic line. The Organ part continues with intricate accompaniment.

59

C Tpt.

Org.

This system covers measures 59 to 62. The C Trumpet part has a melodic line. The Organ part continues with intricate accompaniment.

63

C Tpt.

Org.

This system covers measures 63 to 66. The C Trumpet part has a melodic line. The Organ part continues with intricate accompaniment.

TRUMPET ARIA - BWV 198.8 - Bach - Organ

C Tpt.

Org.

67

C Tpt.

Org.

71

C Tpt.

Org.

75

C Tpt.

Org.

80

TRUMPET ARIA - BWV 198.8 - Bach - Organ

6

C Tpt.

84

Org.

Detailed description: This system covers measures 84 to 87. The C Trumpet part (top staff) begins with a melodic line of eighth notes, followed by a trill on a dotted quarter note in measure 85. The Organ part (bottom two staves) provides harmonic support with chords and moving lines in both hands.

C Tpt.

88

Org.

Detailed description: This system covers measures 88 to 91. The C Trumpet part is mostly silent, indicated by a whole rest. The Organ part continues with a rhythmic pattern of eighth notes in the bass and chords in the treble.

C Tpt.

92

Org.

Detailed description: This system covers measures 92 to 95. The C Trumpet part has a melodic line starting in measure 92, ending with a trill on a dotted quarter note in measure 93. The Organ part concludes with a final chord in measure 95.