

# PRELUDE in F MAJOR

(from: *Radamisto*, Act 3, Scena 1, HWV 12)

for B-Flat Piccolo Trumpet and Organ

Score (02':00")

Allegro ♩ = 100

Georg Friedrich Händel (1685 - 1759)

Arr. Michel Rondeau

Trumpet in C

Organ

This system contains the first four measures of the score. The Trumpet in C part is shown as a single staff with a whole rest in each measure. The Organ part consists of two staves (treble and bass clef). The treble staff features a melodic line with eighth and sixteenth notes, while the bass staff provides a rhythmic accompaniment with quarter and eighth notes.

C Tpt.

Org.

This system covers measures 5 through 9. The C Tpt. part begins in measure 9 with a melodic phrase. The Organ part continues with its two-staff texture, featuring a more active treble staff with sixteenth-note patterns and a steady bass line.

C Tpt.

Org.

This system covers measures 10 through 13. The C Tpt. part has a melodic line with some rests. The Organ part's treble staff features a complex texture with many beamed sixteenth notes, while the bass staff remains rhythmic.

C Tpt.

Org.

This system covers measures 14 through 17. The C Tpt. part has a melodic line with rests. The Organ part continues with its two-staff texture, featuring a complex texture with many beamed sixteenth notes in the treble and a steady bass line.

PRELUDE in F MAJOR - HWV 12 - Händel - Score

2  
19

C Tpt.

Org.

Measures 19-22. The C Tpt. part features a continuous sixteenth-note pattern. The Organ part has a rhythmic accompaniment with chords and single notes.

23

C Tpt.

Org.

Measures 23-27. The C Tpt. part has a trill (tr) on the first measure. The Organ part continues with a rhythmic accompaniment.

28

C Tpt.

Org.

Measures 28-31. The C Tpt. part continues with sixteenth-note patterns. The Organ part has a rhythmic accompaniment.

32

C Tpt.

Org.

Measures 32-35. The C Tpt. part continues with sixteenth-note patterns. The Organ part has a rhythmic accompaniment.

## PRELUDE in F MAJOR - HWV 12 - Händel - Score

3

37

C Tpt.

Org.

42

C Tpt.

Org.

47

C Tpt.

Org.

52

C Tpt.

Org.

Fine

PRELUDE in F MAJOR - HWV 12 - Händel - Score

4  
57

C Tpt.

Org.

61

C Tpt.

Org.

64

C Tpt.

Org.

D.C.

# PRELUDE in F MAJOR

(from: *Radamisto*, Act 3, Scena 1, HWV 12)

for B-Flat Piccolo Trumpet and Organ

## Trumpet in B $\flat$

Use B $\flat$  Piccolo Trumpet

Georg Friedrich Händel (1685 - 1759)

Arr. Michel Rondeau

Allegro  $\text{♩} = 100$

8



D.C.

# PRELUDE in F MAJOR

(from: *Radamisto*, Act 3, Scena 1, HWV 12)

for B-Flat Piccolo Trumpet and Organ

## Trumpet in C

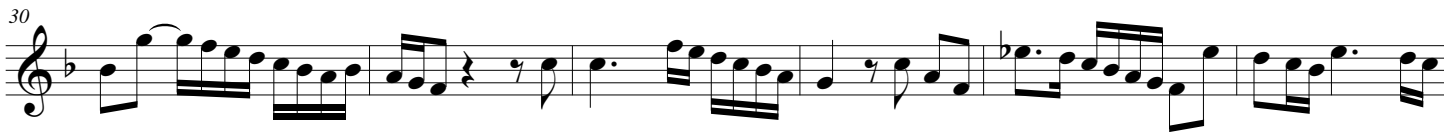
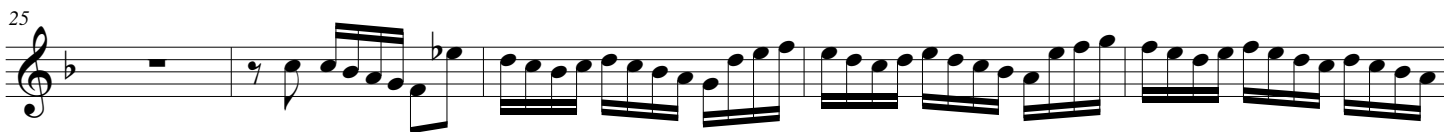
Use B $\flat$  Piccolo Trumpet

Georg Friedrich Händel (1685 - 1759)

Arr. Michel Rondeau

Allegro  $\text{♩} = 100$

8



D.C.

# PRELUDE in F MAJOR

(from: *Radamisto*, Act 3, Scena 1, HWV 12)

for B-Flat Piccolo Trumpet and Organ

Georg Friedrich Händel (1685 - 1759)

Arr. Michel Rondeau

## Organ

Trumpet in C

Allegro ♩ = 100

C Tpt.

Org.

C Tpt.

Org.

C Tpt.

Org.

PRELUDE in F MAJOR - HWV 12 - Händel - Organ

2  
19

C Tpt.

Org.

23

C Tpt.

Org.

28

C Tpt.

Org.

32

C Tpt.

Org.



PRELUDE in F MAJOR - HWV 12 - Händel - Organ

C Tpt.

Org.

37

C Tpt.

Org.

42

C Tpt.

Org.

47

C Tpt.

Org.

52

Fine

PRELUDE in F MAJOR - HWV 12 - Händel - Organ

4  
57

C Tpt.

Org.

61

C Tpt.

Org.

64

C Tpt.

Org.

D.C.