

ANDREAS
HAMMERSCHMIDT
(1611/12 - 1675)

O DOMINE
JESU CHRISTE

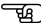
FOR CCATB AND CONTINUO

Typeset using LilyPond by Rémy CLAVERIE (remy.claverie@orange.fr) and corrected by Xavier CLAVERIE-ROSPIDE .

This music score has been placed in the public domain by the typesetter under the Creative Commons Licence.

Any comment or error indications are welcome. As well, an email when this score is used (concerts, recordings, etc.) would be appreciated.

The lilypond source file is available on request to the typesetter.

This score has been transcribed from the digitised facsimile of the Staatsbibliothek of Berlin (PPN766153789). 



O DOMINE JESU CHRISTE

ANDREAS HAMMERSCHMIDT

Musical score for the first system of "O Domine Jesu Christe". The score is for six parts: CANTUS I, CANTUS II, ALTUS, TENORE I, BASSUS, and CONTINUO. The key signature is one flat (B-flat) and the time signature is common time (C). The lyrics are: O, O Do-mine, O Do-mine, O Do-mine, O Do-mine Je - su, O Do-mine, O Do-mine Je - su, O Do-mine, O Do-mine Je - su, O Do-mine Je - su, Do-mi-ne.

Musical score for the second system of "O Domine Jesu Christe". The score is for six parts: C. I., C. II., A., T. I., B., and CONT. The key signature is one flat (B-flat) and the time signature is common time (C). The lyrics are: Do-mine Je - su Chri - ste, a - do - ro te, a - do - ro te, Do-mine Je - su Chri - ste, a - do - ro te, a - do - ro te, Do-mine Je - su Chri - ste, a - do - ro te, a - do - ro te, Do-mine Je - su Chri - ste, a - do - ro te Je - su Chri - ste, Je - su Do-mine Je - su Chri - ste, a - do - ro te Je - su Chri - ste, Je - su.

8 **B**

C. I. a - do - ro te Je - su Chri - ste, a - do - ro te in Cru - ce vul - ne -

C. II. a - do - ro te Je - su Chri - ste, a - do - ro te in Cru - ce vul - ne -

A. te, a - do - ro te Je - su Chri - ste, a - do - ro te

T. I. a - do - ro te, a - do - ro te, a - do - ro te in Cru - ce vul - ne -

B. Chri - ste a - do - ro te, a - do - ro te, a - do - ro te

CONT. # 6 5 6 6 # 6

12 **C**

C. I. ra - tum fel - le et a -

C. II. ra - tum fel - le et a - ce - to po - ta - tum, et a -

A. in Cru - ce vul - ne - ra - tum fel - le et a - ce - to po - ta - tum, et a -

T. I. ra - tum, vul - ne - ra - tum fel - le et a - ce - to po - ta - tum, et a -

B. in Cru - ce vul - ne - ra - tum fel - le et a - ce - to po - ta - tum

CONT. 6/4 # 7 7b/5 5/4 # # 7b/5b 6b/5b 5/4 3

D

17

C.I. ce - to po - ta - tum de precor te,

C.II. ce - to po - ta - tum de precor te, de precor te,

A. ce - to po - ta - tum de precor te, de precor te, de-precor te,

T.I. ce - to po - ta - tum de precor te, de precor te, de-precor te,

B. de - precor te, ut vul-nera tu - a, ut vul-ne-

CONT. $\frac{6}{5b}$ 6 $\frac{5}{4}$ # # 6 #

22

C.I. a-do-ro te, a - do-ro te, a-do-ro te,

C.II. a-do-ro te, a - do-ro te, a-do-ro te,

A. de-precor te, de-precor te, a-do-ro

T.I. de-precor te, a-do-ro te,

B. ra tu - a sint re-me-dium a - ni-mæ me - æ, Je - su Chri - ste Je - su

CONT. 6 6 # # 6

26

E

C. I. a - do - ro te, de - pre-cor te, de - pre-cor te,

C. II. a - do - ro te, de - pre-cor te, de - pre-cor te, ut

A. te, a - do - ro te, de - pre-cor te, de - pre-cor te, ut

T. I. a - do - ro te, a - do - ro te, de - pre-cor te, ut vul - nera

B. Chri - ste a - do - ro te, de - pre-cor te, ut vul - nera tu - a

CONT. # 6 6 6^b # # 6 6

30

C. I. ut vul-nera tu - a sint re-me - di - um a - ni-mæ me -

C. II. vul-nera tu - a, tu - a sint re-me - di - um a - ni-mæ me - -

A. vul-nera tu - a sint re-me - di - um a - ni-mæ me - -

T. I. tu - a ut vul-nera sint re-me - di - um a - - - ni-mæ me -

B. ut vul-nera tu - a sint re-me - di - um a - ni-mæ me - -

CONT. 6 5³ 6⁴ 5³ 6 # 6⁵ 4⁷ 5⁶ 4 #

34 **F**

C.I. æ, de-precor te, de-precor te, ut vul-nera tu - a

C.II. æ, a-do-ro te, a-do-ro te ut vul-nera

A. æ, de-precor te, de-precor te, ut vul-nera tu - a, vul-nera, ut

T.I. æ, a-do-ro te, a-do-ro te, ut vul-nera tu - a

B. æ, ut vul-nera tu - a, vul-nera

CONT. # b # # 6 6 6 # #

38

C.I. sint re - me - dium a - ni-mæ me - æ,

C.II. tu - a, vul-nera sint re - me - dium a - ni-mæ me - æ,

A. vul-nera tu - a sint re-me - dium a - ni-mæ me - æ,

T.I. sint re - me - dium a - ni-mæ me - æ, ut

B. sint re - me - dium, re - me - dium a - ni-mæ me - æ, ut

CONT. 6 6 6 5/3 6/4 5/4 3

42 **G**

C.I. ut vul-nera tu - a sint re -

C.II ut vul-ne-ra tu - a, vul-ne-ra sint re - me - dium

A. ut vul-nera tu - a, vul-nera, ut vul-nera tu - a sint re-me - dium

T.I. vul-nera tu - a sint re - me - dium

B. vul-nera tu - a, vul-nera sint re - me - dium, re - me - dium

CONT. 6 6 # # 6 6

46

C.I. me - di-um a - ni-mæ me - æ, a men, a - men.

C.II. a - ni-mæ me - æ, a men, a - men.

A. a - ni-mæ me - æ, a men, a - men.

T.I. a - ni-mæ me - æ, a men, a - men.

B. a - ni-mæ me - æ, a men, a - men.

CONT. 6 5/3 6/4 5/4 3 5/4 3

Typeset using LilyPond by Rémy CLAVERIE (remy.claverie@orange.fr) and corrected by Xavier CLAVERIE-ROSPIDE .

This music score has been placed in the public domain by the typesetter under the Creative Commons Licence.

Any comment or error indications are welcome. As well, an email when this score is used (concerts, recordings, etc.) would be appreciated.

The lilypond source file is available on request to the typesetter.

This score has been transcribed from the digitised facsimile of the Staatsbibliothek of Berlin (PPN766153789).



Next pages should be printed on one side only

O DOMINE JESU CHRISTE

Continuo

ANDREAS HAMMERSCHMIDT

6 6 6 6 5

A 6 # # 6 # 6 5 6 6 #

B 10

6 6 4 5 # 7 5 4 # # 15 5^b 6 5 4 3

C

6 5^b 6 5 4 # # 20 6 #

6 6 # # 6 # 6 # 6 5^b # #

D

6 6 30 6 5 3 6 4 5 3 6 # 5 4 5 #

E

b # # 35 # 6 # 6 # # 6 6

F

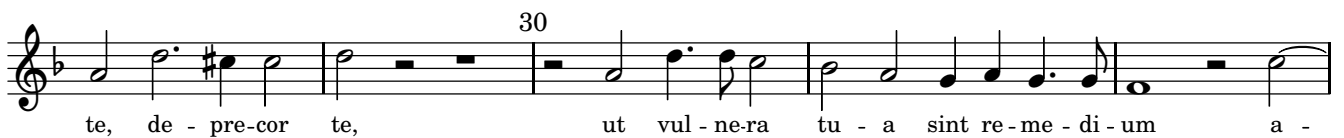
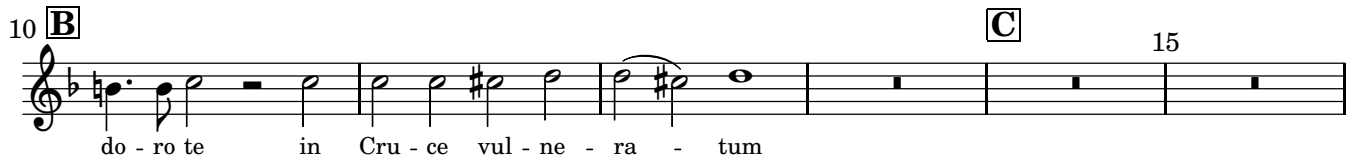
40 6 5 3 6 4 5 4 3 # 6 6 # #

G

6 6 45 6 5 3 6 4 5 4 3 5 4 3

O DOMINE JESU CHRISTE
Colla parte Cantus I

ANDREAS HAMMERSCHMIDT



O DOMINE JESU CHRISTE
Colla parte Cantus II

ANDREAS HAMMERSCHMIDT

O,
O Do - mine,
O Do - mi - ne Je - su, O Do - mi - ne Je - su

5 **A**
Chri - ste, a - do - ro te, a - do - ro te, a - do - ro te Je - su Chri - ste, a -

10 **B** **C** 15
do - ro te in Cru - ce vul - ne - ra - tum fel - le et a - ce - to po -

D 20
ta - tum, et a - ce - to po - ta - tum de - pre - cor te, de - pre - cor te,

25
a - do - ro te, a - do - ro te, a - do - ro te,

E 30
a - do - ro te, de - pre - cor te, de - pre - cor te, ut vul - ne - ra tu - a,

tu - a sint re - me - di - um a - ni - mæ me - æ, a - do - ro te,

35 **F**
a - do - ro te ut vul - ne - ra tu - a, vul - ne - ra sint re - me - di - um

40 **G**
a - ni - mæ me - æ, ut vul - ne - ra tu - a, vul - ne - ra

45
sint re - me - di - um a - ni - mæ me - æ, a - men, a - men.

O DOMINE JESU CHRISTE

Colla parte Altus

ANDREAS HAMMERSCHMIDT

G key

O Do - mi-ne Je - su, O Do - mi-ne, O Do - mi-ne Je - su

5 **A**
Chri - ste, a - do - ro te, a - do - ro te, a - do - ro te Je - su Chri - ste, a -

10 **B** **C**
do - ro te in Cru - ce vul - ne - ra - tum fel - le et a -

15 **D**
ce - to po - ta - tum, et a - ce - to po - ta - tum de - pre - cor te, de -

20
- pre - cor te, de - pre - cor te, de - pre - cor te, de - pre - cor

25 **E**
te, a - do - ro te, a - do - ro te, de - pre - cor te, de - pre - cor te, ut

30
vul - ne - ra tu - a sint re - me - di - um a - ni - mæ me - æ, de - pre - cor

35 **F**
te, de - pre - cor te, ut vul - ne - ra tu - a, vul - ne - ra, ut vul - ne - ra tu - a

40 **G**
sint re - me - di - um a - ni - mæ me - æ, ut vul - ne - ra tu - a, vul - nera, ut

45
vul - nera tu - a sint re - me - di - um a - ni - mæ me - æ, a - men, a - men.

O DOMINE JESU CHRISTE
Colla parte Tenore I

ANDREAS HAMMERSCHMIDT

O, O Do-mine, O, O Do-mine Je-su, O Do-mine Je-su

5 **A**
Chri-ste, a-do-ro te, a-do-ro te, a-do-ro te,

B
10
a-do-ro te, a-do-ro te in Cru-ce vul-ne-ra-tum, vul-

C
15
-ne-ra-tum fel-le et a-ce-to po-ta-tum, et a-ce-to po-

D
20
ta-tum de-pre-cor te, de-pre-cor te, de-pre-cor te,

E
25
de-pre-cor te, a-do-ro te, a-do-ro te, a-do-ro te, de-pre-cor

30
te, ut vul-ne-ra tu-a ut vul-ne-ra sint re-me-di-um a-

F
35
-ni-mæ me-æ, a-do-ro te, a-do-ro te, ut vul-ne-ra tu-a

G
40
sint re-me-di-um a-ni-mæ me-æ, ut vul-ne-ra tu-a

45
sint re-me-di-um a-ni-mæ me-æ, a-men, a-men.

O DOMINE JESU CHRISTE

Colla parte Tenore I

ANDREAS HAMMERSCHMIDT

G key



O, O Do-mine, O, O Do-mine Je-su, O Do-mine Je-su

5 **A**
Chri-ste, a-do-ro te, a-do-ro te, a-do-ro te,

B
10
a-do-ro te, a-do-ro te in Cru-ce vul-ne-ra-tum, vul-

C
15
-ne-ra-tum fel-le et a-ce-to po-ta-tum, et a-ce-to po-

D
20
ta-tum de-pre-cor te, de-pre-cor te, de-precor te,

E
25
de-precor te, a-do-ro te, a-do-ro te, a-do-ro te, de-pre-cor

30
te, ut vul-ne-ra tu-a ut vul-ne-ra sint re-me-dium a-

F
35
-ni-mæ me-æ, a-do-ro te, a-do-ro te, ut vul-ne-ra tu-a

G
40
sint re-me-dium a-ni-mæ me-æ, ut vul-ne-ra tu-a

45
sint re-me-dium a-ni-mæ me-æ, a-men, a-men.

O DOMINE JESU CHRISTE
Colla parte Bassus

ANDREAS HAMMERSCHMIDT

O Do - mine, O Do - mine Je - su, Do - mine Do - mine Je - su

5 **A**
Chri - ste, a - do - ro te Je - su Chri - ste, Je - su Chri - ste a - do - ro

B
10
te, a - do - ro te, a - do - ro te in Cru - ce vul - ne - ra -

C 15 **D**
tum fel - le et a - ce - to po - ta - tum de -

20
- pre - cor te, ut vul - ne - ra tu - a, ut vul - ne - ra tu - a sint re -

25 **E**
me - di - um a - ni - mæ me - æ, Je - su Chri - ste Je - su Chri - ste a - do - ro te, de - pre - cor

30
te, ut vul - ne - ra tu - a ut vul - ne - ra tu - a sint re - me - di - um a - ni - mæ

35 **F**
me - æ, ut vul - ne - ra tu - a, vul - ne - ra sint re - me - di - um,

40 **G**
re - me - di - um a - ni - mæ me - æ, ut vul - ne - ra tu - a, vul - ne - ra

45
sint re - me - di - um, re - me - di - um a - ni - mæ me - æ, a - men, a - men.