

BASSO

DISALAMON ROSSI

H E B R E O

IL SECONDO LIBRO DELLE SINFONIE
è Gagliarde à Tre voci,

Per sonar due Viole, & vn Chittarrone con alcune delle dette
à Quattro, & a Cinque, & alcune Canzon per
sonar à Quattro nel fine.

Nouamente composte, & date in luce.

*Al Serenissimo Signore, e Patron mio Colendissimo
il Sig. Duca di Modena, & di Reggio, etc.*



In Venetia, Appresso Ricciardo Amadino.

M D C V I I I .

C



SERENISSIMO SIGNORE.



Non sapeuo ritrouar strada per poter mostrar con gl'effetti a V. A. ne pur in parte la diuotion mia verso di lei si per che non condesceno in me cosa bastevole a darle questo segno come per non mostrar al Mondo di presumer & ambir troppo; Hora che l'istessa benignità sua (di cui mi trouo oltre ogni mio merito altre volte fauorito) mi porge occasione di poter appagare questa mia inclinatione senza niun scrupolo per hauer ella mostrato di compiacersi alli giorni passati delle mie compositioni, Per tanto vengo con ogni humiltà a dedicarle queste presenti Sinfonie insieme con la debole persona mia, e questo più per sodisfa-

re al gusto di V. A. che perche meritino vna tanta prottentione, assicurandomi se riguarderà all'affetto grande dell'animo mio in dedicarle e non al merito loro che le debbino gradire conforme alla solita sua gentilezza, augurando alla Serenissima sua persona ogni maggior grandezza e felicità. Di Mantua il dì 30 di Ottobre. 1608.

L'humilissimo e diuotissimo suo seruitore

Salamon Rossi.

I BASSO

1.

2.

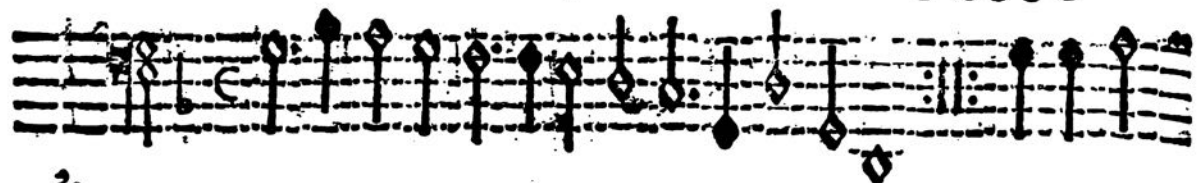
No. 31

C 2

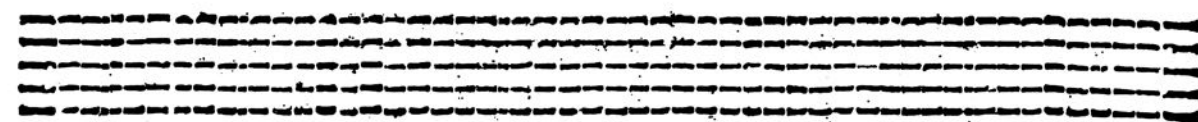
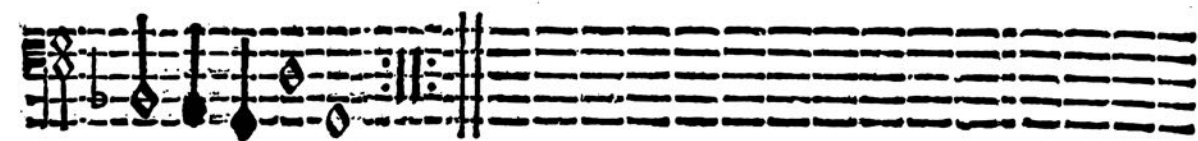
Op. 22

2

BASSO



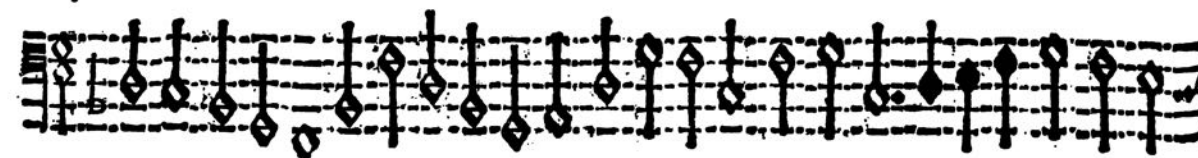
3.



Op. 27



4.



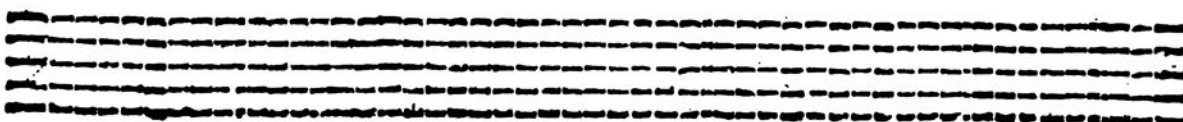
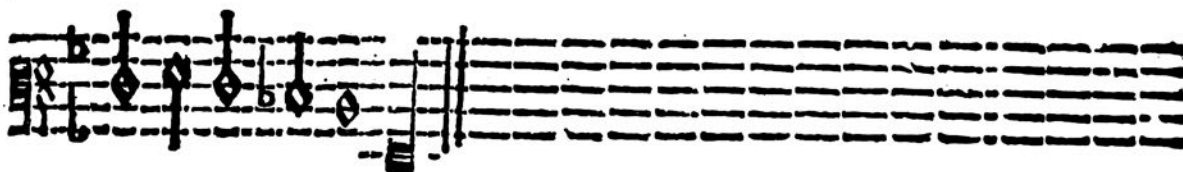
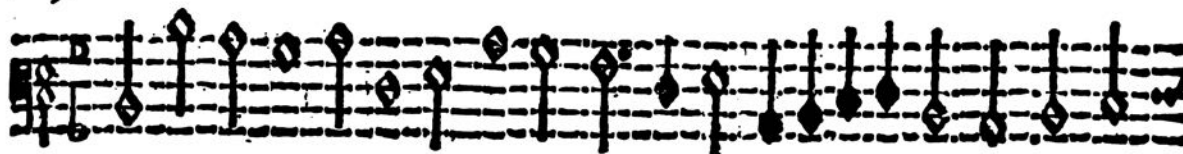
Op. 23

3

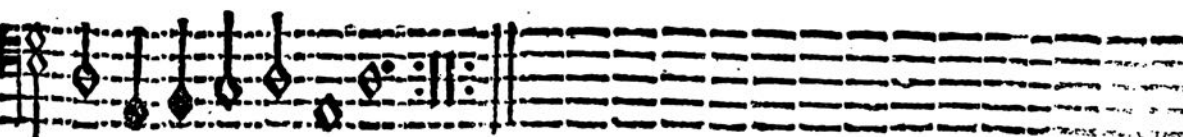
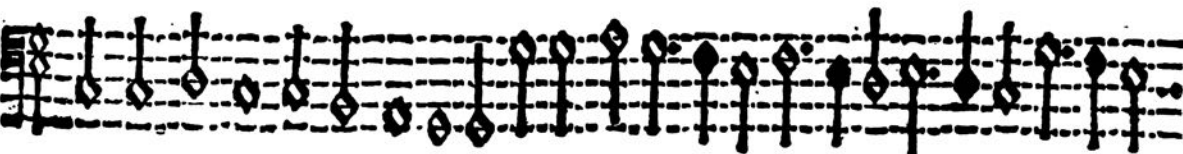
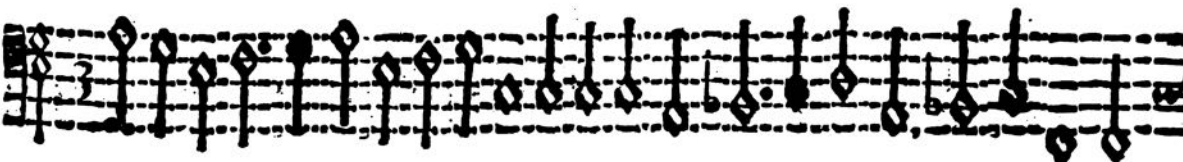
BASSO



5.



6.



4 BASSO

7.

Op. 25

8.

Op. 28

3 BASSO

9.

10.

6 BASSO

11.

12.

7 BASSO

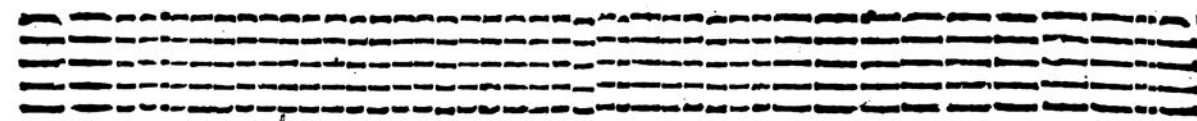
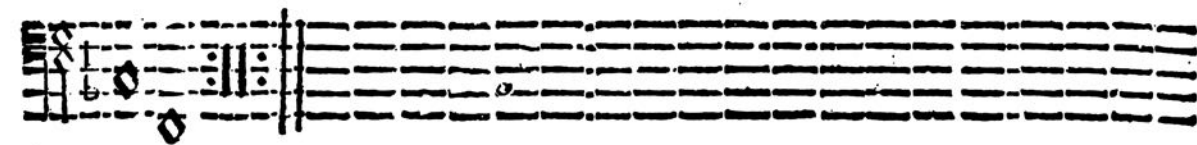
13.

no. 30

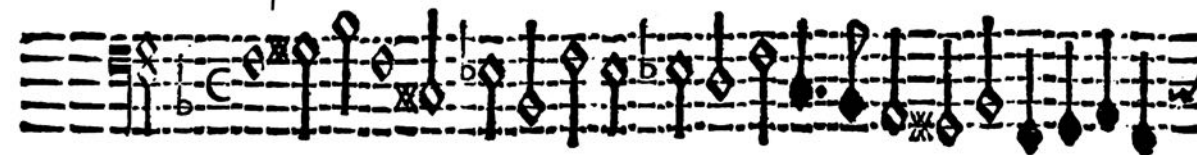
14.



15.



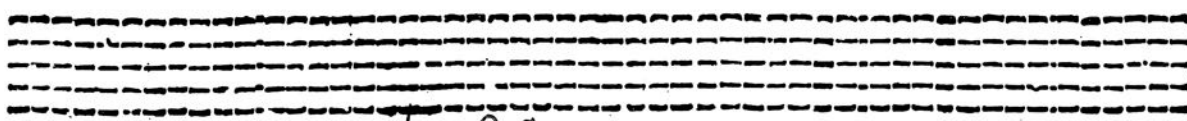
Op. 26



16.



17.



Op. 29

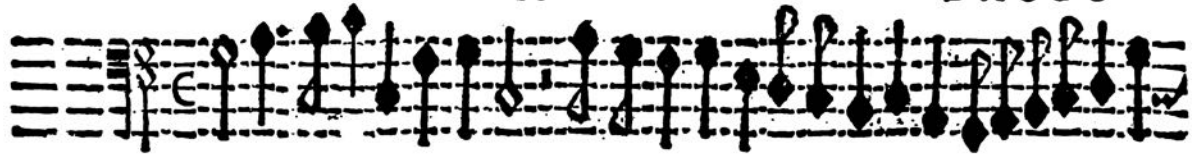


18.



10

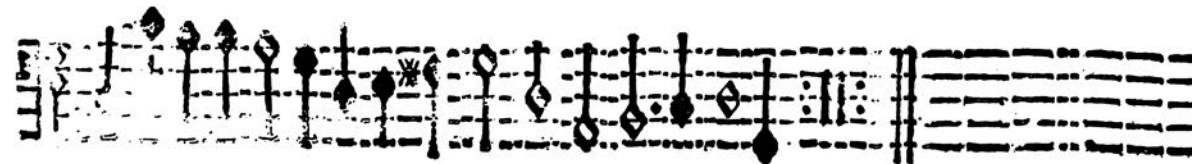
BASSO



19.

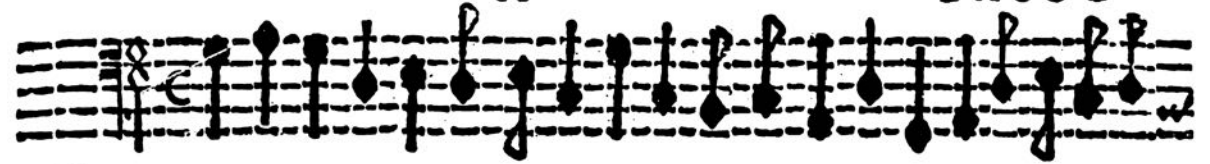


20.

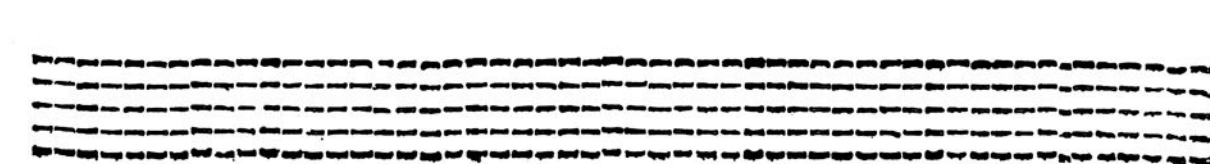
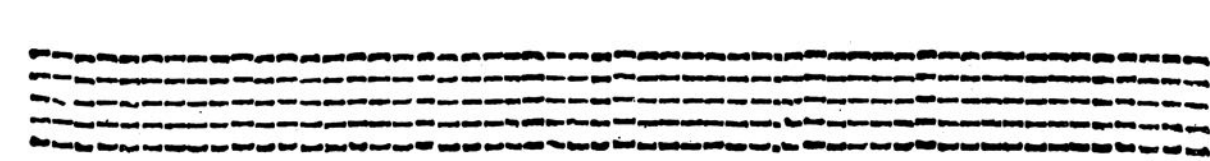
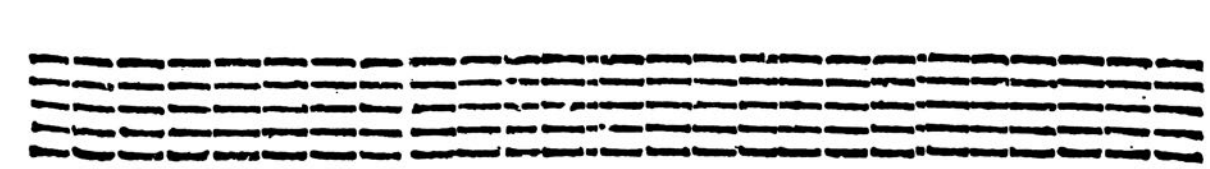
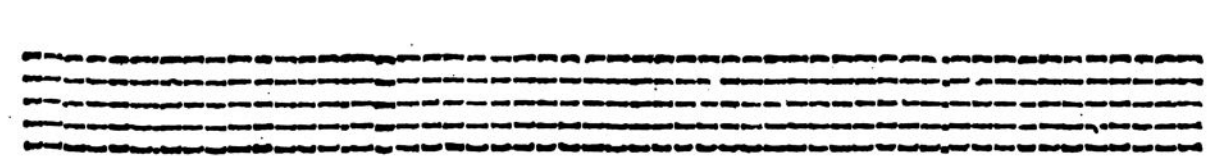
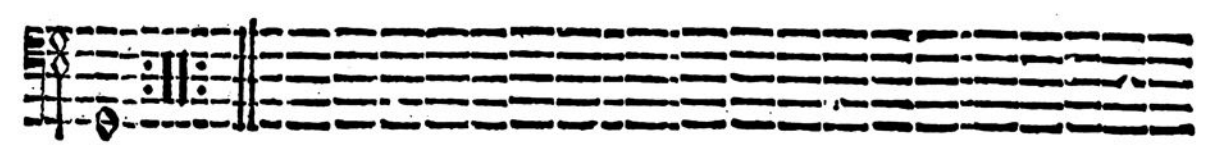


11

BASSO



21.



f. 3

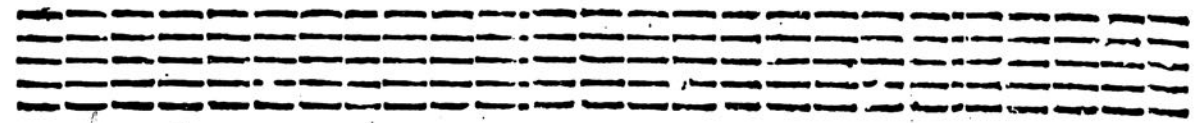
Sinfonia à 3. & a 4. fi placet.

12

BASSO



22:

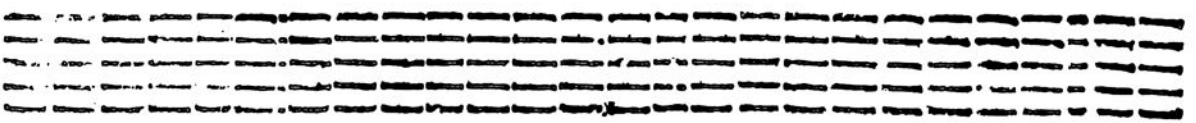
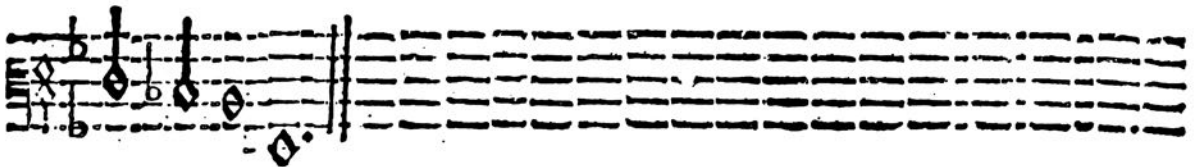


f. 5

Sinfonia à 4. & a 3. fi placet.

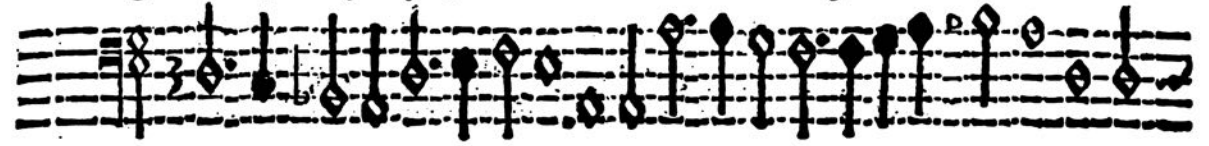


23:

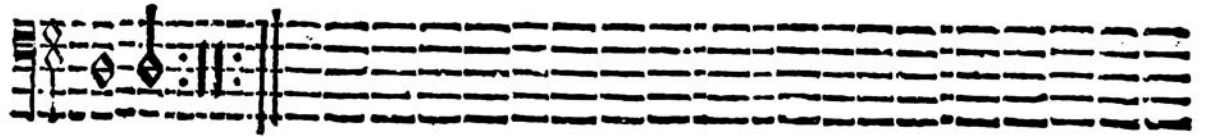
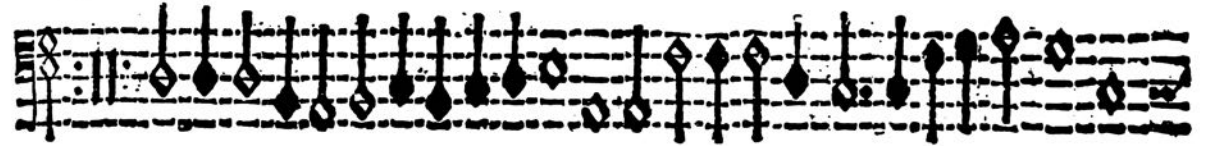


Gagliarda à 4. & a 3. fi placet. detta la Zambalina. 13

BASSO



24:

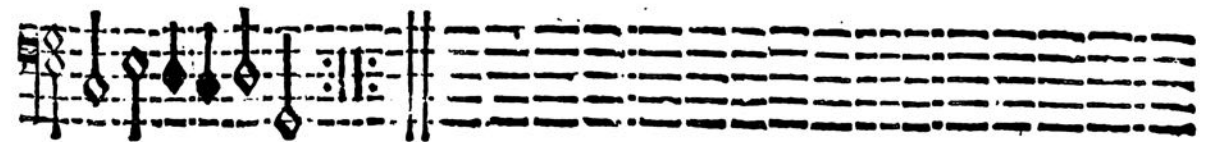


f. 8

Sinfonia à 5. & a 3. fi placet.



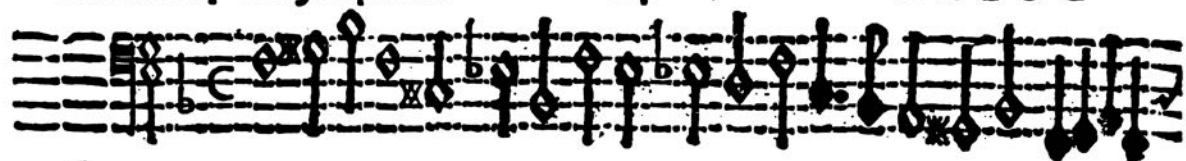
25:



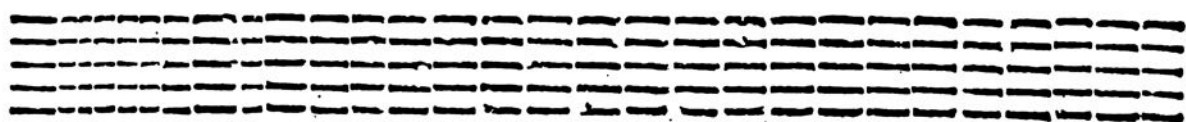
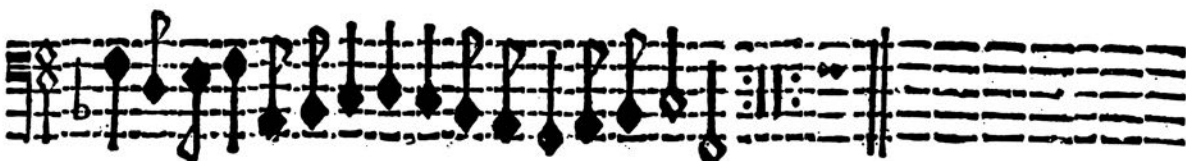
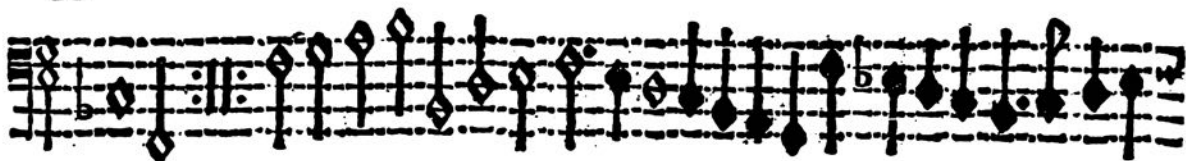
opus 16
Sinfonia à 4 & a 3. si placet.

14

BASSO

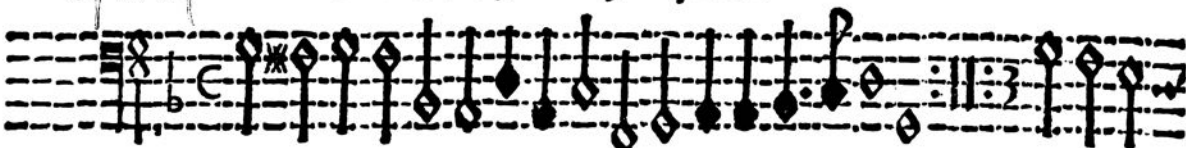


26

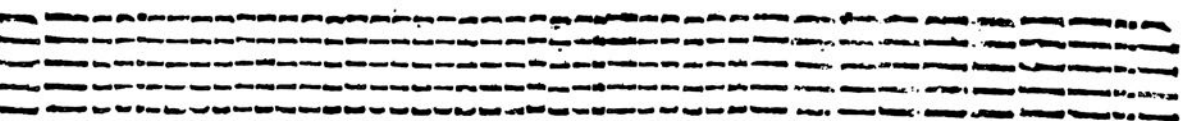


opus 4

Sinfonia à 5 & a 3 si placet.



27



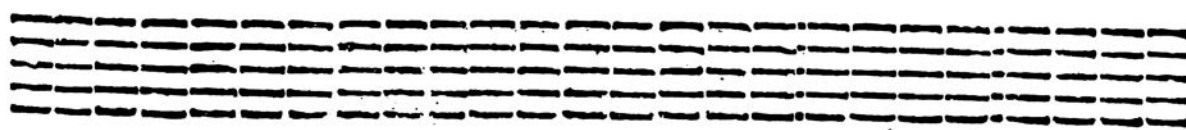
opus 9
Sinfonia à 5. & a 3 si placet.

15

BASSO



28.

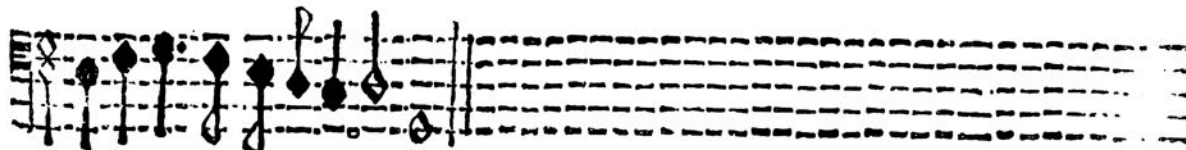


Sinfonia à 5. & a 3. si placet.

opus 18



29.



ops. 14

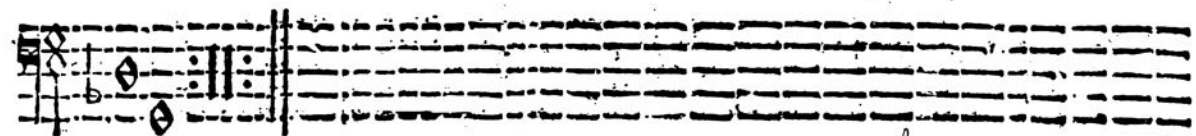
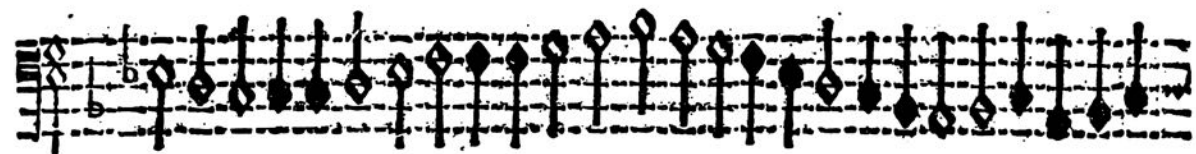
Sinfonia à 5. & a 3. si placet.

16

BASSO



30.



Sinfonia à 5. & a 3. si placet.

ops. 2



37.



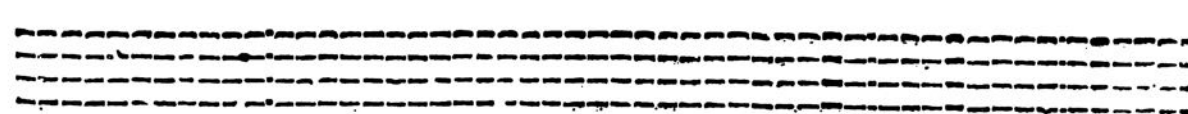
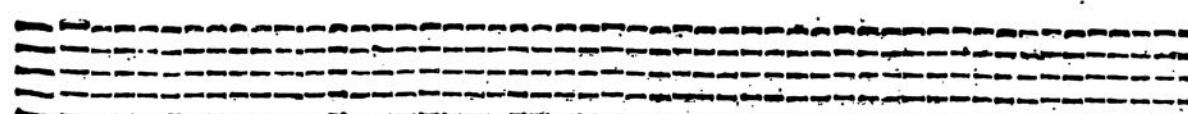
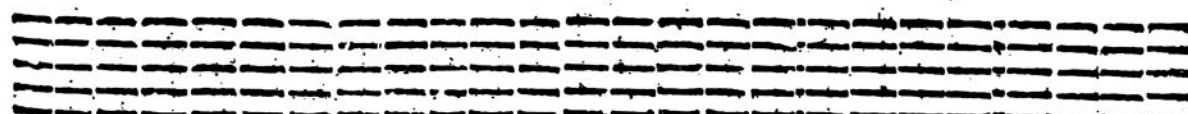
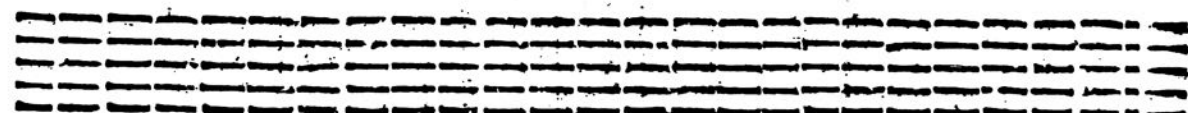
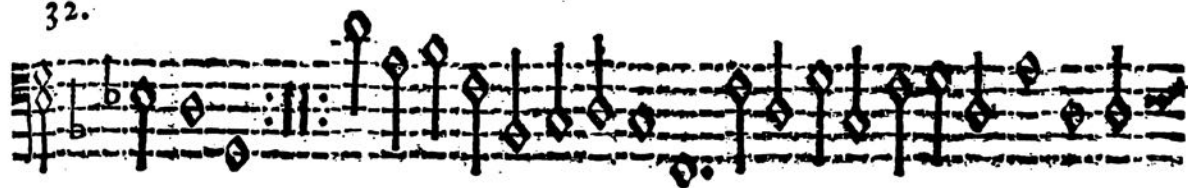
Gagliarda à 5. & a 3. si placet. detta Narciso.

17

BASSO



32.



Canzon per sonar à 4:

18

BASSO

Musical score for 'Canzon per sonar à 4' in bass clef, 4/4 time. The score consists of eight staves of music. The notation includes various note values (quarter, eighth, and sixteenth notes), rests, and dynamic markings such as 'p' (piano) and 'f' (forte). The piece concludes with a double bar line and repeat signs.

Canzon per sonar A 4.

19

BASSO

Musical score for 'Canzon per sonar A 4.' in bass clef, 4/4 time. The score consists of eight staves of music. The notation includes various note values, rests, and dynamic markings such as 'p' (piano) and 'f' (forte). The piece concludes with a double bar line and repeat signs.

Canzon per fonar A 4.

BASSO

