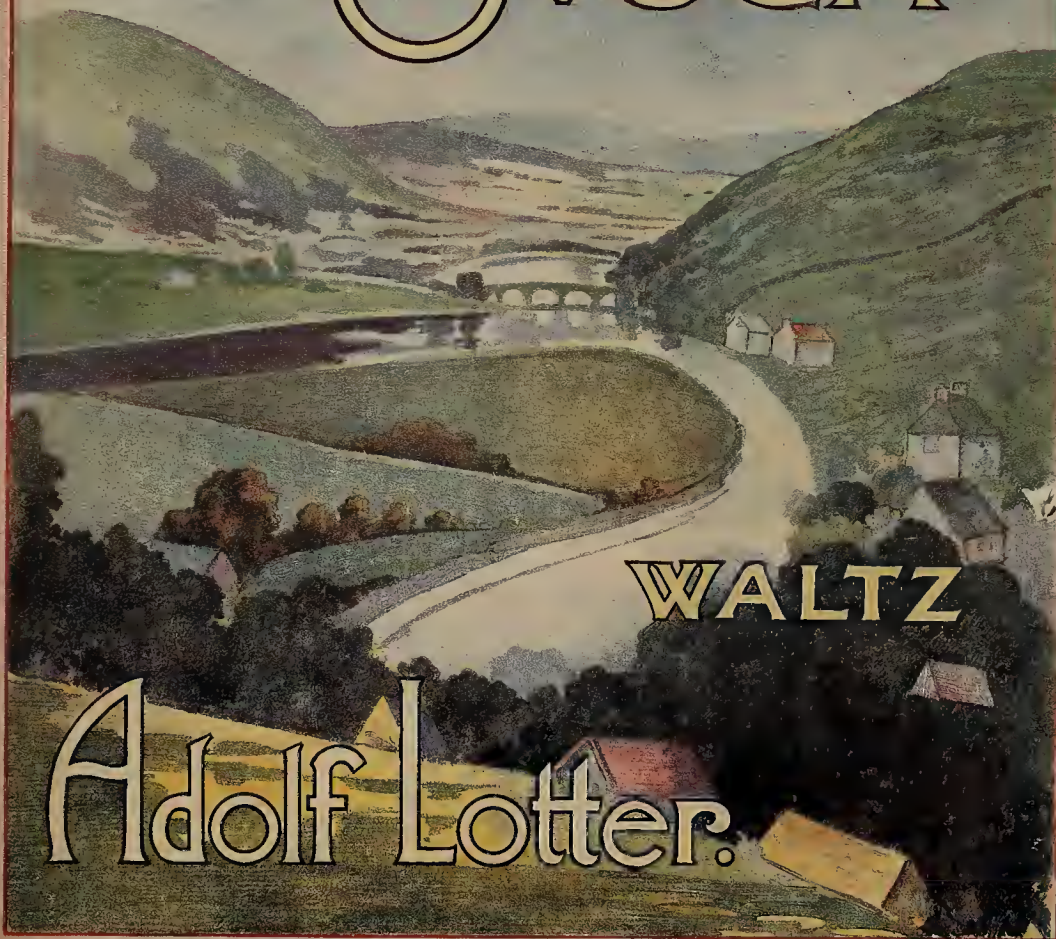


# In Sweet OVOCA



## Adolf Lotter.

COPYRIGHT 1914 IN U.S.A.  
BY HAWKES & SON,  
COPYRIGHT FOR ALL COUNTRIES.

NEW YORK  
Joa. W. Stern & Co.  
102-104 West 36th Street.

THE HAWKES & HARRIS MUSIC CO.  
10 Shuter Street (Opposite Massey Hall)  
TORONTO, CANADA

### NET PRICES

	S. D.
PIANO SOLO	2-0
FULL ORCHESTRA	2-0
SMALL "	1-4
EXTRA PARTS EACH	3
PIANO CONDUCTOR	8

LONDON  
Hawkes & Son,  
Denman Street, Piccadilly Circus

# IN SWEET OVOCA.

VALSE.

Introd.  
Andantino semplice.

ADOLF LOTTER.

Piano.

*p*

*mf*

*mf*

Tempo di Valse.

*poco rit.*

*p*

Copyright 1914 in U.S.A. by Hawkes & Son.

Copyright for all Countries.

HAWKES & SON, Denman Street, Piccadilly Circus, LONDON, W.



Valse.

3

*f*  
*ben marcato*

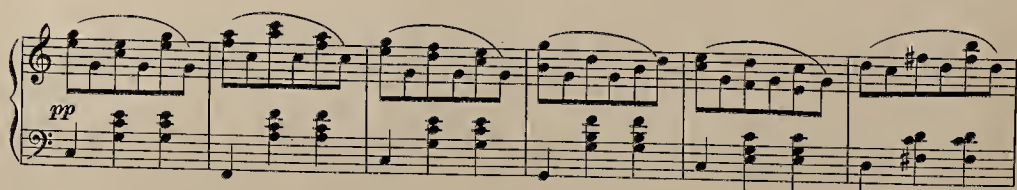
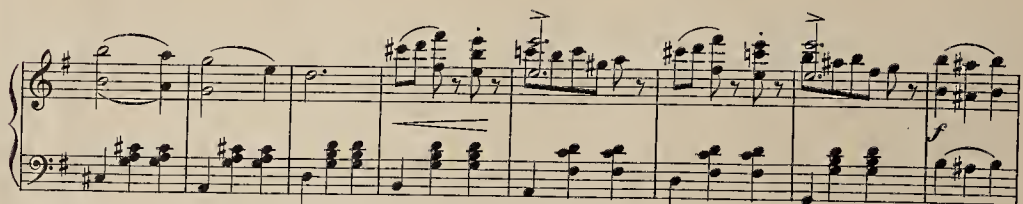
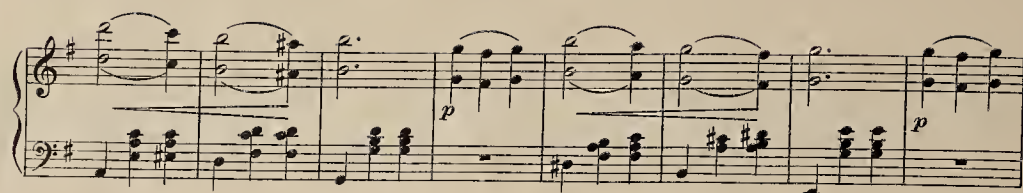
*p* *f*

*mf*

This page contains six systems of musical notation for a piano piece. The key signature is G major (one sharp) and the time signature is 4/4. The notation includes various musical symbols such as notes, rests, accidentals, and dynamic markings like *f* and *mf*. The piece concludes with a double bar line and repeat dots.







This page contains six systems of musical notation for piano. The notation is written in treble and bass staves, with a key signature of one sharp (F#). The music features various dynamics and markings:

- System 1:** Starts with a treble staff and a bass staff. Dynamics include *mf* and *f*. A marking *ben marcato* appears below the system.
- System 2:** Continues the musical theme with various chordal textures.
- System 3:** Includes a *p* (piano) dynamic marking.
- System 4:** Continues the musical theme with various chordal textures.
- System 5:** Includes an *animato* marking above the treble staff and a *f* (forte) dynamic marking below the bass staff.
- System 6:** Ends with a *ff* (fortissimo) dynamic marking.



# POPULAR COMPOSITIONS BY ADOLF LOTTER.

## AWAKENING OF LOVE.

(Réveil d'amour.)

### VALSE IDYLLE.

Piano Solo 2/-; Full Orchestra 2/-; Small Orchestra 1/4; Extra Parts, each 3d; Piano Conductor 8d.



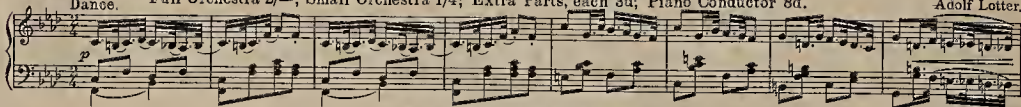
Adolf Lotter.

## A SOUTHERN WEDDING.

DANCE.

(Adapted from the celebrated humorous sketch.)

Piano Solo 2/-; Full Orchestra 2/-; Small Orchestra 1/4; Extra Parts, each 3d; Piano Conductor 8d.



Adolf Lotter.

## KLYTEMNESTRA.

VALSE ROMANTIQUE.

Piano Solo 2/-; Full Orchestra 2/-; Small Orchestra 1/4; Extra Parts, each 3d; Piano Conductor 8d.

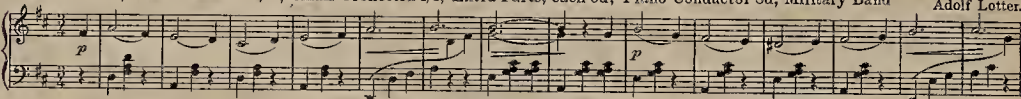


Adolf Lotter.

## L'HEURE SUPRÊME.

VALSE.

Piano Solo 2/-; Full Orchestra 2/-; Small Orchestra 1/4; Extra Parts, each 3d; Piano Conductor 8d; Military Band



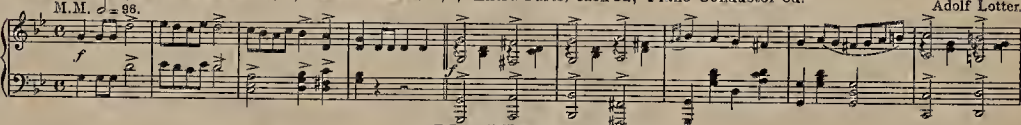
Adolf Lotter.

## ENTRY OF THE BULGARS.

(Einzug der Bulgaren.)

### MARCHE SLAV.

Piano Solo 2/-; Full Orchestra 2/-; Small Orchestra 1/4; Extra Parts, each 3d; Piano Conductor 8d.

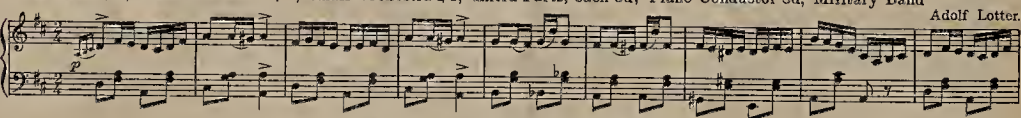


Adolf Lotter.

## MANUELLA.

INTERMEZZO TWO-STEP.

Piano Solo 2/-; Full Orchestra 2/-; Small Orchestra 1/4; Extra Parts, each 3d; Piano Conductor 8d; Military Band

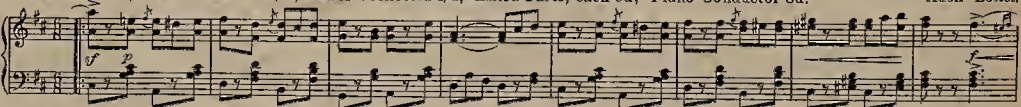


Adolf Lotter.

## MY LITTLE BILLIKEN.

CHARACTERISTIC TWO-STEP.

Piano Solo 2/-; Full Orchestra 2/-; Small Orchestra 1/4; Extra Parts, each 3d; Piano Conductor 8d.

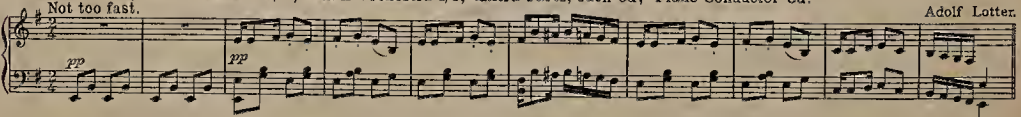


Adolf Lotter.

## THE COON'S PATROL.

CHARACTERISTIC PIECE.

Piano Solo 2/-; Full Orchestra 2/-; Small Orchestra 1/4; Extra Parts, each 3d; Piano Conductor 8d.



Adolf Lotter.

HAWKES & SON, Denman Street, Piccadilly Circus, London W.

82550