

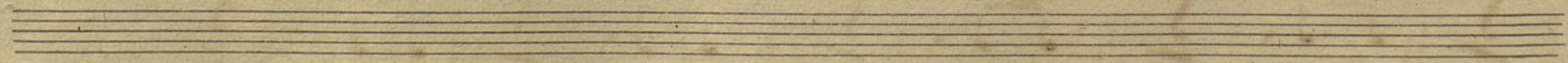
Rondo Contrabasso.

All.

Handwritten musical score for Contrabasso, Rondo. The score is written on ten staves. It begins with a treble clef, a key signature of one sharp (F#), and a 6/8 time signature. The music features a variety of rhythmic patterns, including eighth and sixteenth notes, and rests. Dynamic markings include 'f' (forte), 'pp' (pianissimo), 'p' (piano), and 'cresc.' (crescendo). A 'dim.' (diminuendo) marking is present in the second staff. The piece concludes with a 'Subito' marking at the bottom right.



A handwritten musical score on ten staves. The notation includes various rhythmic values, accidentals, and dynamic markings. The first staff begins with a treble clef, a key signature of one sharp (F#), and a common time signature (C). The first measure of the first staff contains a dynamic marking 'p'. The second staff contains a key signature change to one sharp (F#) and a dynamic marking 'p'. The third staff contains a dynamic marking 'p'. The fourth staff contains a dynamic marking 'f'. The fifth staff contains a dynamic marking 'p'. The sixth staff contains a dynamic marking 'f'. The seventh staff contains a dynamic marking 'p'. The eighth staff contains a dynamic marking 'p' and the word 'cresc.' written above the staff. The ninth staff contains a dynamic marking 'p'. The tenth staff contains a dynamic marking 'p'. The score concludes with a double bar line at the end of the tenth staff.





Handwritten musical notation on two staves. The first staff begins with a treble clef, a key signature of one sharp (F#), and a common time signature (C). It contains several measures of music, including a measure with a sharp sign (#) and a measure with a forte dynamic marking (f). The second staff begins with a bass clef and a piano dynamic marking (pp). It contains several measures of music, including a measure with a 4/4 time signature and a measure with a forte dynamic marking (f). The notation is written in dark ink on aged, yellowed paper.

A series of approximately 12 staves of music, which are very faint and appear to be ghosted or bleed-through from the reverse side of the page. The notation is mostly illegible due to its lightness, but some rhythmic patterns and note heads are visible. The staves are arranged in a vertical column on the page.