

# Concerto a cinque

Source: V-CVbav, Barb.lat.4231, f.11r-14r

Tomaso Antonio Vitali (1663-1745)

Ed. by Giovanni Tribuzio

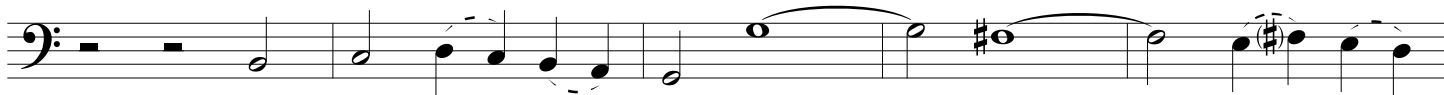
Grave

Andante

8



13



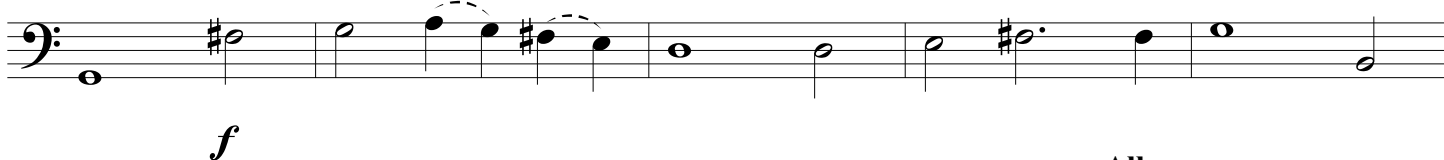
18



23

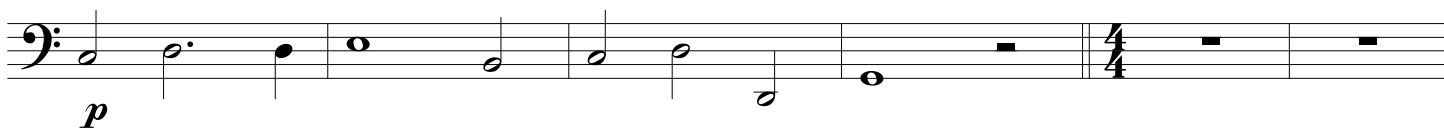


28



Allegro

33

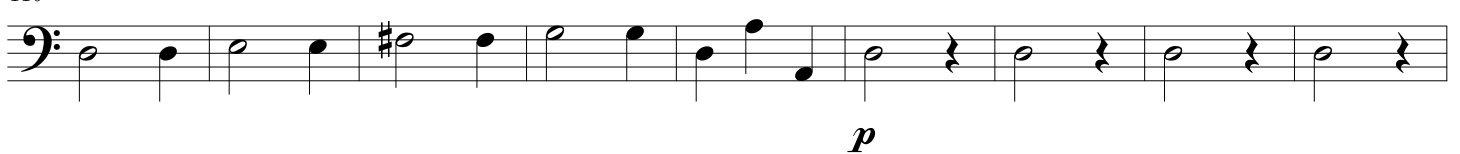


39



47





119

[illegible]

128

Musical notation for the bass line of 'The Rose Tree'. The staff is in bass clef and contains 14 measures. The notes are: G2 (quarter), G2 (quarter), G2 (quarter), F#2 (quarter), G2 (half), G2 (quarter), F#2 (quarter), G2 (quarter), G2 (quarter), F#2 (quarter), G2 (quarter), G2 (quarter), G2 (quarter), and G2 (quarter). A forte (*f*) dynamic marking is placed below the staff between the 5th and 6th measures.

137

The bass line of 'The Rose Tree' is written on a single staff in bass clef. It begins with a key signature of one sharp (F#). The melody consists of eighth and quarter notes, with some rests. The piece concludes with a piano (*p*) dynamic marking.

145

[illegible]