

# A Favorite German March

With VARIATIONS for the

## Piano forte or Harpichord

Composed and Respectfully Dedicated to

Miss Leslie

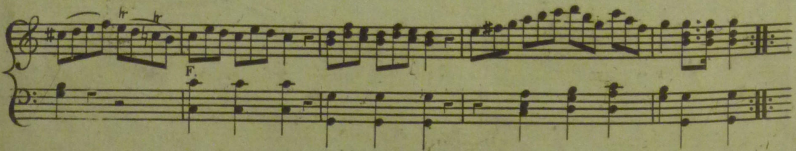
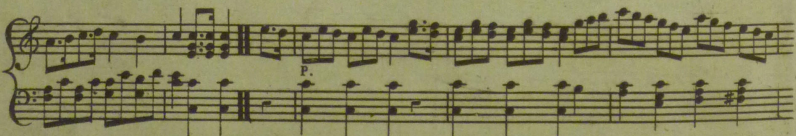
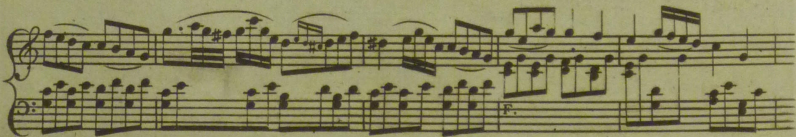
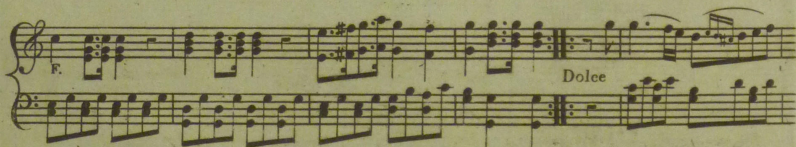
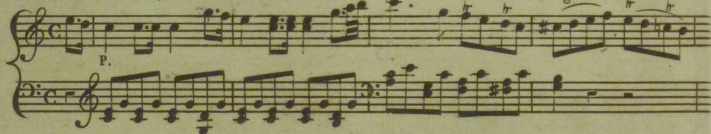
BY

J. H. Butler

Price 1/6

EDIN<sup>R</sup> Printed & Sold by STEWART & Co. Parliament Square & N<sup>o</sup> 40 South Bridge Street.

Pompofo





A handwritten musical score for a piece titled "A Favorite German March". The score is written on seven systems of two staves each, with a treble clef on the upper staff and a bass clef on the lower staff. The music is in 2/4 time and features a variety of rhythmic patterns, including eighth and sixteenth notes, and rests. The piece is marked with dynamic and performance instructions: "Dolce" appears in the first system, and "F." (forte) appears in the second, fourth, fifth, and sixth systems. The notation includes slurs, accents, and repeat signs. The paper is aged and shows some wear.



This page contains a musical score for a piece titled "A Favorite German March". The score is written for two staves, likely representing a piano and a violin or flute. It consists of seven systems of music. The first system includes the instruction "Dolce". The second system includes the instruction "F". The third system includes the instruction "P". The fourth system includes the instruction "F". The fifth system includes the instruction "Dolce". The sixth system includes the instruction "F". The seventh system concludes the piece with a double bar line. The music features a variety of rhythmic patterns, including eighth and sixteenth notes, and rests.