

Viola

05321

Matinas da Conceição

por

Francisco Manoel da Silva

Ribeiro Bastos



Resp. 10

11

Viola

1

Handwritten musical notation for the first system, consisting of four staves. The first staff begins with a treble clef, a key signature of two flats, and a common time signature. A large number '2' is written above the first few notes. The notation includes various note values, rests, and dynamic markings.

*Q.C.A.*  
 Verso Tace 1<sup>o</sup> Resp. 2 *Sust.*

Handwritten musical notation for the second system, consisting of two staves. The first staff begins with a treble clef, a key signature of two flats, and a common time signature. It includes dynamic markings such as *Alleg.* and *Sust.*

Handwritten musical notation for the third system, consisting of two staves. The first staff begins with a treble clef, a key signature of two flats, and a common time signature. It includes the marking *Verso*.

Handwritten musical notation for the fourth system, consisting of one staff. The word *Volte* is written in the middle of the staff.









Handwritten musical notation on the left page, including a treble clef, a key signature of two flats, and a 2/4 time signature. The notation consists of several staves of music with various note values and rests.

*Allegro*  $\text{♩} = 120$   $\frac{2}{4}$  Handwritten musical notation on the first staff of the right page, starting with a treble clef and a key signature of two flats.

*Verso de Tenor*  
*Andante*  $\text{♩} = 60$   $\frac{3}{4}$  Handwritten musical notation on the second staff of the right page, starting with a treble clef and a key signature of two flats.

Handwritten musical notation on the third staff of the right page, continuing the piece with a treble clef and a key signature of two flats.

Handwritten musical notation on the fourth staff of the right page, ending with a double bar line and the initials "D.C."

*Moderato*  $\text{♩} = 100$   $\frac{3}{4}$  Handwritten musical notation on the fifth staff of the right page, starting with a treble clef and a key signature of two flats.

*Allegro*  $\text{♩} = 120$   $\frac{2}{4}$  Handwritten musical notation on the sixth staff of the right page, starting with a treble clef and a key signature of two flats.

*Adagio*  $\text{♩} = 60$   $\frac{3}{4}$  Handwritten musical notation on the seventh staff of the right page, starting with a treble clef and a key signature of two flats.

Handwritten musical notation on the eighth staff of the right page, ending with the word "Volte" written in a decorative script.



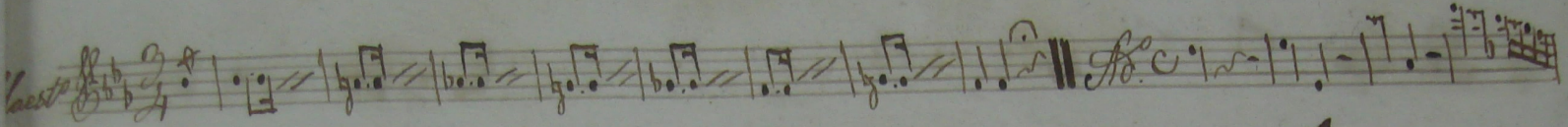
Handwritten musical score on the left page, consisting of ten staves. The notation includes various rhythmic values, accidentals, and dynamic markings. Key annotations include:

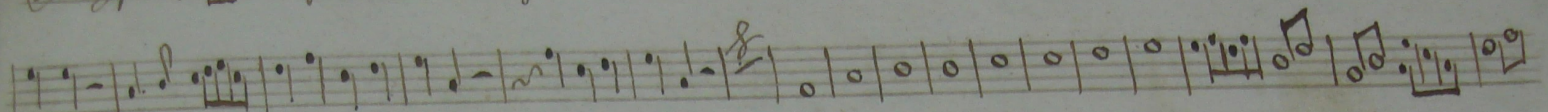
- 8<sup>mo</sup>* at the beginning of the first staff.
- Picc* (Piccolo) above the second staff.
- Arco* (Arco) above the second staff.
- Alto* above the third staff.
- Allegro* above the seventh staff.
- Allegro* above the eighth staff.
- Alto* above the ninth staff.
- Volte* at the end of the tenth staff.

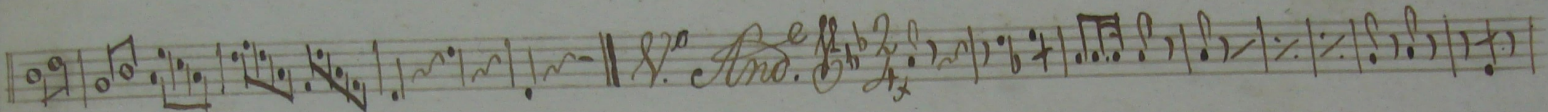
Handwritten musical score on the right page, consisting of ten staves. The notation includes various rhythmic values, accidentals, and dynamic markings. Key annotations include:

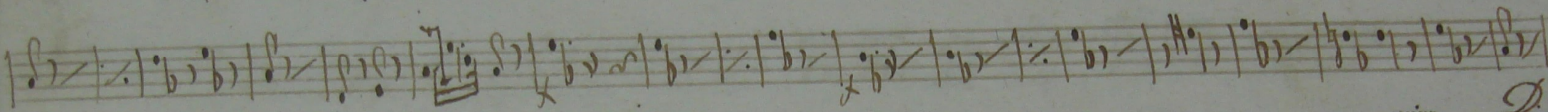
- est* at the beginning of the first staff.
- Gloria Patri* above the fifth staff.
- Resp. 1. Alto* above the sixth staff.

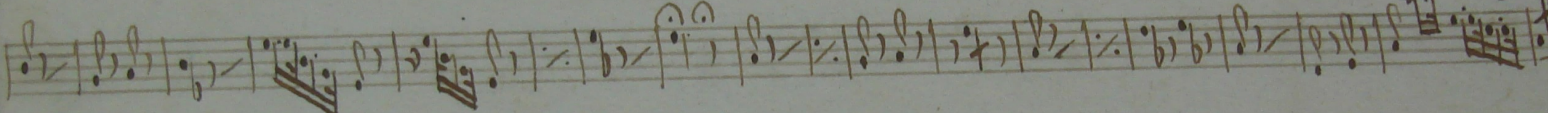


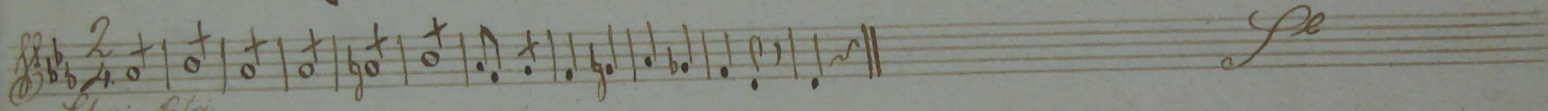
*Maest.* 

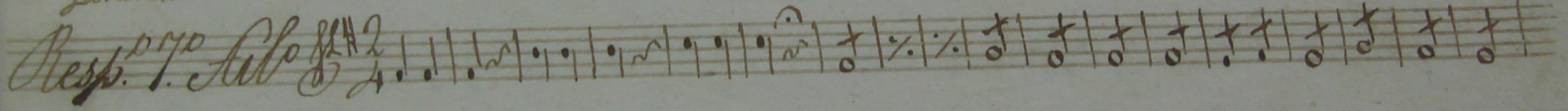


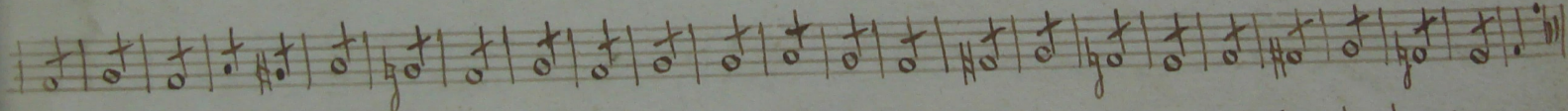


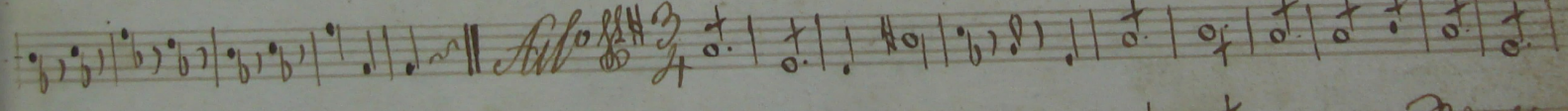
*8.º And.* 

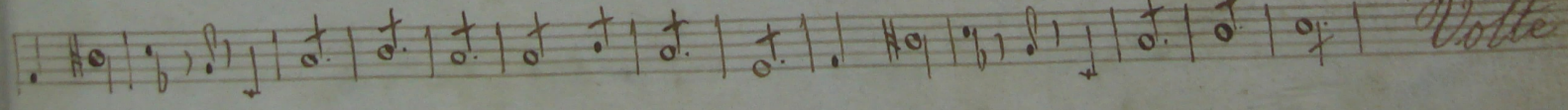




*Gloria Patri*  
*Resp. 1.º* 

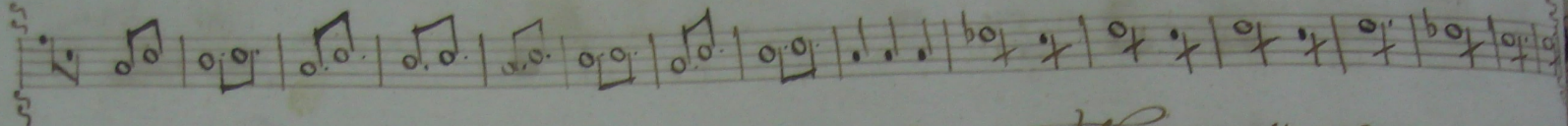




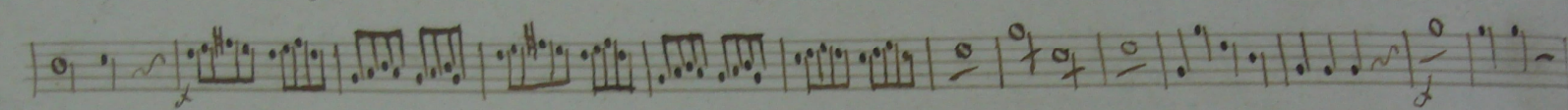
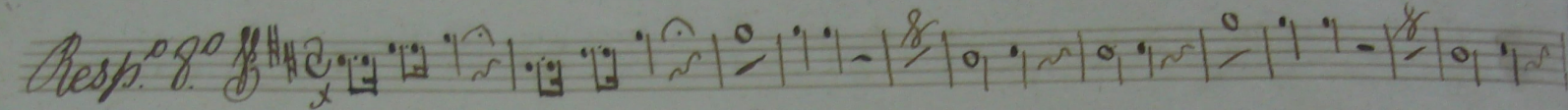
*Volte* 



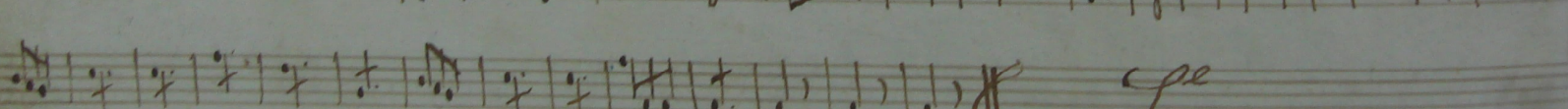
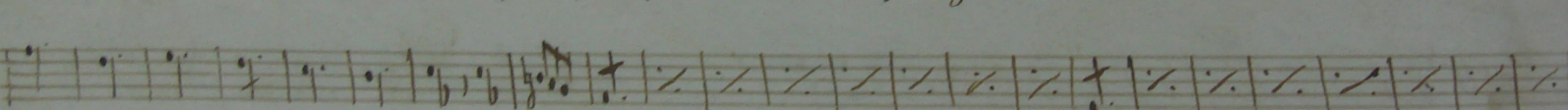
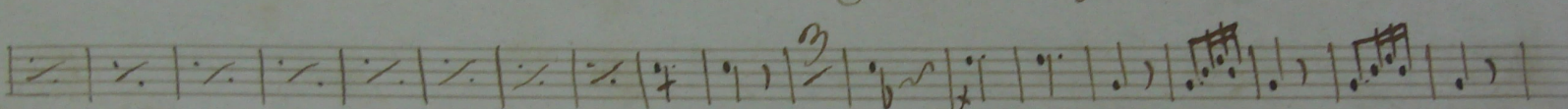
2



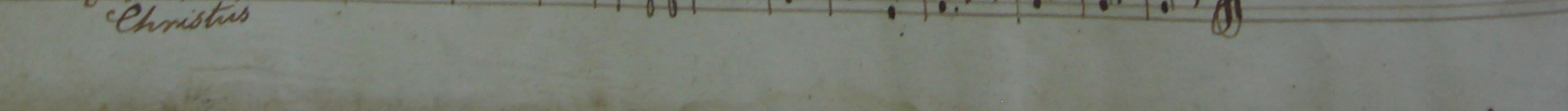
*Verso Tace. // Se*



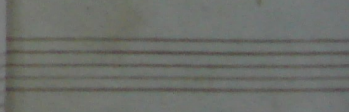
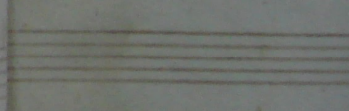
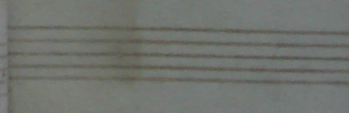
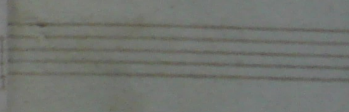
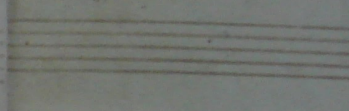
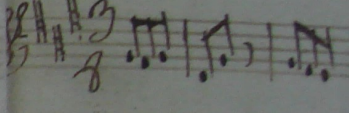
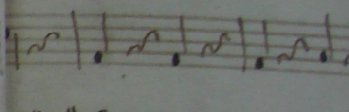
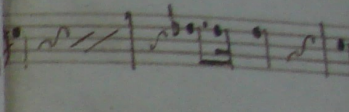
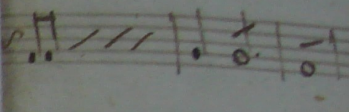
*Ad*



*Christus*



*Verso*





Serato

Pizz

Handwritten musical score for 'Serato'. The score is written on a system of five staves. The first staff begins with a treble clef, a key signature of one sharp (F#), and a common time signature (C). The notation includes various rhythmic values such as eighth and sixteenth notes, often beamed together. There are several instances of slurs and accents. The second staff continues the melody with similar rhythmic patterns. The third staff features a series of sixteenth-note runs. The fourth staff concludes the piece with a double bar line and the initials 'D.C.' (Da Capo). The fifth staff contains a few additional notes and rests.

D.C.