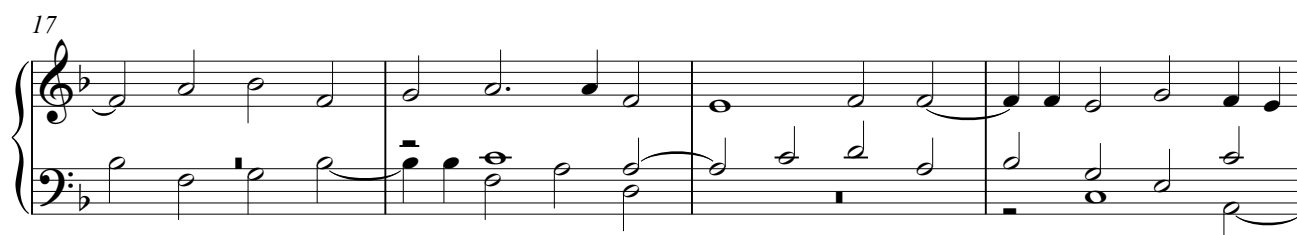
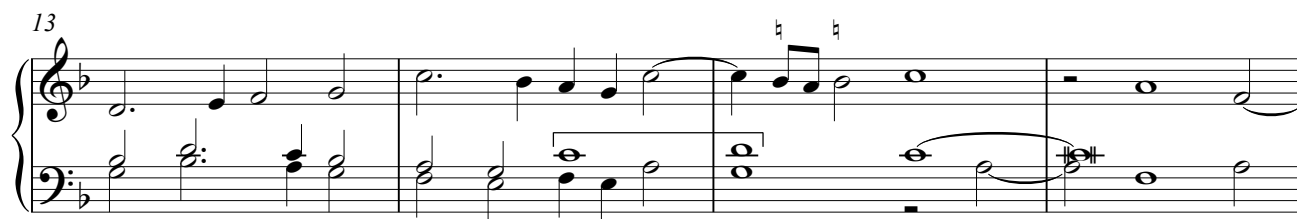
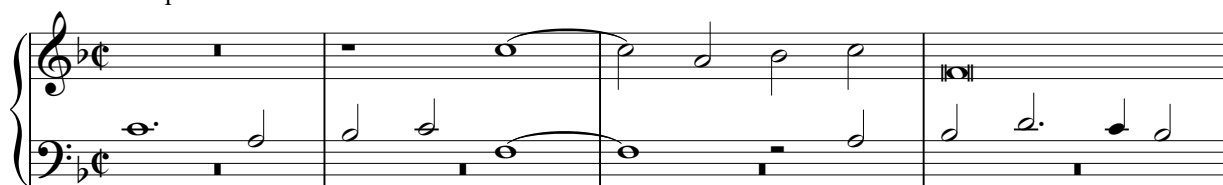


# Domine non est exaltatum cor meum

Motettarum trium vocum 1577 2, Magnum opus musicum 31

Orande de Lassus (Mons 1532 - München 1594)  
Transcription Arnold den Teuling 2018

Prima pars



29

33

37

41

45

49

53

57

57

60

60

64 Secunda pars

64 Secunda pars

68

68

72

72

76

76

79

79

82

Measures 82-85 of the musical score. The system consists of two staves, treble and bass clef, with a key signature of one flat (B-flat). Measure 82 features a melodic line in the treble staff and a supporting bass line. Measures 83-85 continue the melodic and harmonic development with various note values and rests.

86

Measures 86-89 of the musical score. The system continues with two staves. Measure 86 shows a continuation of the melodic line with some rests. Measures 87-89 feature more complex harmonic textures with multiple notes in both staves.

90

Measures 90-93 of the musical score. The system continues with two staves. Measure 90 has a prominent rest in the treble staff. Measures 91-93 show a more active melodic line in the treble staff, with the bass staff providing harmonic support.

94

Measures 94-97 of the musical score. The system continues with two staves. Measure 94 features a melodic line in the treble staff. Measures 95-97 show a continuation of the melodic and harmonic development with various note values and rests.

98

Measures 98-101 of the musical score. The system continues with two staves. Measure 98 features a melodic line in the treble staff. Measures 99-101 show a continuation of the melodic and harmonic development with various note values and rests.

102

Measures 102-105 of the musical score. The system continues with two staves. Measure 102 features a melodic line in the treble staff. Measures 103-105 show a continuation of the melodic and harmonic development with various note values and rests.

106

Measures 106-109 of the musical score. The system continues with two staves. Measure 106 features a melodic line in the treble staff. Measures 107-109 show a continuation of the melodic and harmonic development with various note values and rests.

110

113

116

119

123

The editions 1577, 1576 and 1604, do not give bar lines, but it was usual to use them in contemporary keyboard intabulations. See my edition for voices or instruments for critical notes, the text and translation.