

Acoustic Guitar

It Was You

(Slower Romantic Version)

Daniel Léo Simpson
December 30, 2018
San Carlos, California

Moderately ♩=104

D G A D G A

Verse 1 & 2

5 D G A D G A

9 Bm G A Bm G A

Chorus 1 & 2

13 D G A D G A Bm G F#m Em

BRIDGE 1 & 2

18 A G/A D Bm F#m G A

23 D Em F#m G A

Verse 3

28 D G A D G A

V.S.

32 Bm G A Bm G A

CHORUS 3

36 D G A D G A Bm G F#m Em

41 A G/A D G A

44 D G A D

47 G A D rit. G A D

It Was You

Classical Guitar 1st & 3rd verses (Slower Romantic Version)
Classical Guitar 2nd verse

Daniel Léo Simpson
December 30, 2018
San Carlos, California

Moderately ♩=104

Musical notation for the first system, measures 1-4. The top staff contains a melody with triplets and accents, while the bottom staff is empty.

5 Verse 1

Musical notation for the second system, measures 5-8. The top staff is labeled "Verse 1" and the bottom staff is labeled "Verse 2". Both staves contain chords and triplets.

11 Chorus 1 & 2

Musical notation for the third system, measures 11-14. The top staff is labeled "Chorus 1 & 2". Both staves contain chords and triplets.

19 BRIDGE 1 & 2

Musical notation for the fourth system, measures 19-22. The top staff is labeled "BRIDGE 1 & 2". Both staves contain chords and triplets.

23

Musical notation for the fifth system, measures 23-26. The top staff contains a melody with slurs and accents, while the bottom staff contains chords.

2

Verse 3
Verse 2

28

Musical notation for Verse 3, measures 28-33. The top staff features a melody with triplets and a repeat sign. The bottom staff is empty.

CHORUS 3

34

Musical notation for Chorus 3, measures 34-39. The top staff features a melody with triplets and a repeat sign. The bottom staff is empty.

Outro

40

Musical notation for Outro, measures 40-44. The top staff features a melody with a repeat sign. The bottom staff is empty.

rit.

45

Musical notation for the final section, measures 45-49. The top staff features a melody with a 'rit.' marking. The bottom staff is empty.

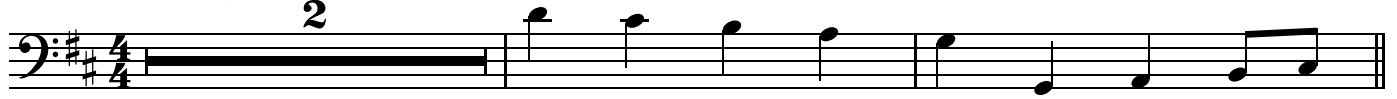
It Was You

Electric Bass

(Slower Romantic Version)

Daniel Léo Simpson
December 30, 2018
San Carlos, California

Moderately $\text{♩} = 104$
2



5 Verse 1 & 2

mf



9



13 Chorus 1 & 2



19 *mf*

BRIDGE 1 & 2



24



28 Verse 3



32



36 CHORUS 3



mf

42 Outro



47

rit.

