

CHORALE PRELUDE

(from: 'Freu dich sehr, o meine Seele' - 1724)

Adapted for Trumpet and Organ

Score (05':25")

Peter Gerritz (1681 - 1728)

Arr. Michel Rondeau

1. Praeludium ♩ = 80

Trumpet in C

Organ

This section shows the first system of the score. The Trumpet in C part is written in a single staff with a treble clef and a key signature of one sharp (F#). The Organ part is written in two staves (treble and bass clefs) with a key signature of one sharp. The time signature is common time (C). The tempo is marked as ♩ = 80. The music begins with a series of eighth and sixteenth notes in the trumpet, while the organ provides a harmonic accompaniment with chords and moving lines in both hands.

C Tpt.

Org.

This section shows the second system of the score. The C Trumpet part continues with eighth and sixteenth notes. The Organ part features more complex textures, including sixteenth-note patterns in the right hand and sustained chords in the left hand. The system concludes with a fermata over the final notes of both parts.

2. Choral

8

C Tpt.

Org.

This section is titled '2. Choral' and begins at measure 8. The C Trumpet part has a repeat sign at the start, followed by a melodic line with some grace notes. The Organ part provides a steady accompaniment with chords and moving lines in both hands, also featuring a repeat sign at the beginning. The system ends with a fermata.

CHORALE PRELUDE - Gerritz - Score

C Tpt. 14

Org. 14

Detailed description: This system covers measures 14 to 19. The C Tpt. part (top staff) begins with a repeat sign at measure 14, followed by a series of quarter notes: G4, A4, B4, C5, B4, A4, G4. The Organ part (bottom two staves) also starts with a repeat sign at measure 14. The right hand (upper staff) plays a sequence of chords and moving lines: G4-A4-B4, G4-A4-B4, G4-A4-B4, G4-A4-B4, G4-A4-B4, G4-A4-B4. The left hand (lower staff) plays a simple bass line: G3, A3, B3, C4, B3, A3, G3.

C Tpt. 20

Org. 20

Detailed description: This system covers measures 20 to 25. The C Tpt. part (top staff) continues with quarter notes: G4, A4, B4, C5, B4, A4, G4, followed by a repeat sign at measure 24. The Organ part (bottom two staves) continues with the right hand playing chords: G4-A4-B4, G4-A4-B4, G4-A4-B4, G4-A4-B4, G4-A4-B4, G4-A4-B4. The left hand continues with the bass line: G3, A3, B3, C4, B3, A3, G3.

C Tpt. 26

3. Variatio

Org. 26

Detailed description: This system covers measures 26 to 31, marked "3. Variatio". The C Tpt. part (top staff) starts with a trill (tr) on G4, followed by quarter notes: A4, B4, C5, B4, A4, G4. The Organ part (bottom two staves) features more complex textures. The right hand (upper staff) plays chords and moving lines: G4-A4-B4, G4-A4-B4, G4-A4-B4, G4-A4-B4, G4-A4-B4, G4-A4-B4. The left hand (lower staff) plays a bass line: G3, A3, B3, C4, B3, A3, G3.

C Tpt. 32

Org. 32

Detailed description: This system covers measures 32 to 37. The C Tpt. part (top staff) begins with a trill (tr) on G4, followed by quarter notes: A4, B4, C5, B4, A4, G4. The Organ part (bottom two staves) continues with the right hand playing chords: G4-A4-B4, G4-A4-B4, G4-A4-B4, G4-A4-B4, G4-A4-B4, G4-A4-B4. The left hand continues with the bass line: G3, A3, B3, C4, B3, A3, G3.

CHORALE PRELUDE - Gerritz - Score

39

C Tpt.

Org.

Detailed description: This system covers measures 39 to 45. The C Tpt. part starts with whole rests in measures 39-44, then plays a half note G4 with a fermata in measure 45. The Organ part features a complex texture: the right hand has a melodic line with eighth and sixteenth notes, while the left hand provides a steady accompaniment of quarter notes. The key signature is one sharp (F#).

46

C Tpt.

Org.

Detailed description: This system covers measures 46 to 52. The C Tpt. part has whole rests in measures 46-49, followed by a half note G4 with a fermata in measure 50, and then a half note F#4 with a fermata in measure 52. The Organ part continues with its melodic and accompanimental lines, including a repeat sign in measure 46. The key signature is one sharp (F#).

53

C Tpt.

Org.

Detailed description: This system covers measures 53 to 59. The C Tpt. part has whole rests throughout. The Organ part features a melodic line in the right hand with eighth notes and a steady accompaniment of quarter notes in the left hand. The key signature is one sharp (F#).

60

C Tpt.

Org.

Detailed description: This system covers measures 60 to 66. The C Tpt. part plays a half note G4 with a fermata in measure 60, followed by whole rests in measures 61-66. The Organ part continues with its melodic and accompanimental lines, including a repeat sign in measure 60. The key signature is one sharp (F#).

CHORALE PRELUDE - Gerritz - Score

C Tpt. 67

Org. 67

Detailed description: This system contains measures 67 through 74. The C Tpt. part (top staff) begins with a treble clef, a key signature of one sharp (F#), and a common time signature. It features a melodic line with a trill (tr) over the first measure, followed by eighth and quarter notes. The Organ part (bottom two staves) consists of a left hand with a steady eighth-note accompaniment and a right hand with chords and occasional trills. The system concludes with a repeat sign.

C Tpt. 75

Org. 75

Detailed description: This system contains measures 75 through 82. The C Tpt. part (top staff) continues the melodic line with a trill (tr) over the first measure of this system, followed by quarter and eighth notes. The Organ part (bottom two staves) maintains the accompaniment pattern, with the right hand playing chords and the left hand playing eighth notes. The system concludes with a repeat sign.

CHORALE PRELUDE

(from: 'Freu dich sehr, o meine Seele' - 1724)

Adapted for Trumpet and Organ

Trumpet in B \flat

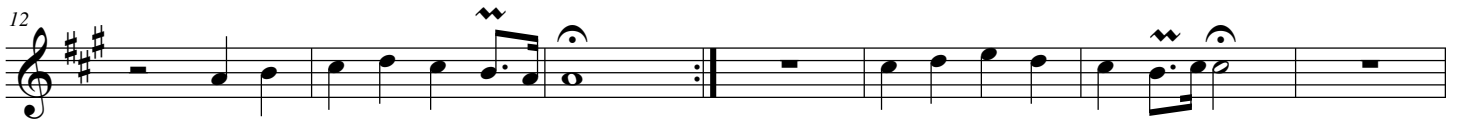
1. Praeludium $\text{♩} = 80$

Peter Gerritz (1681 - 1728)

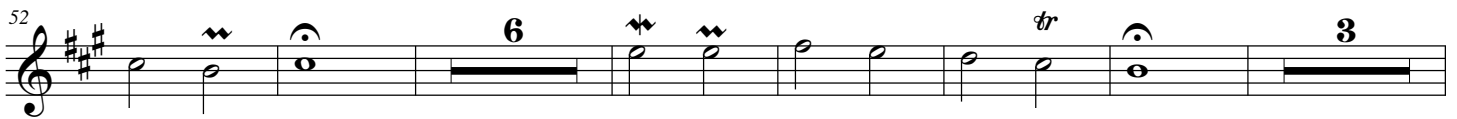
Arr. Michel Rondeau



2. Choral



3. Variatio



CHORALE PRELUDE

(from: 'Freu dich sehr, o meine Seele' - 1724)

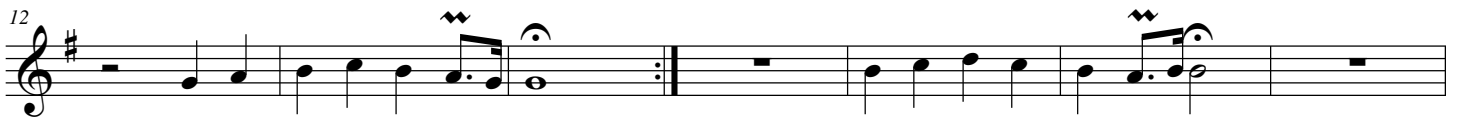
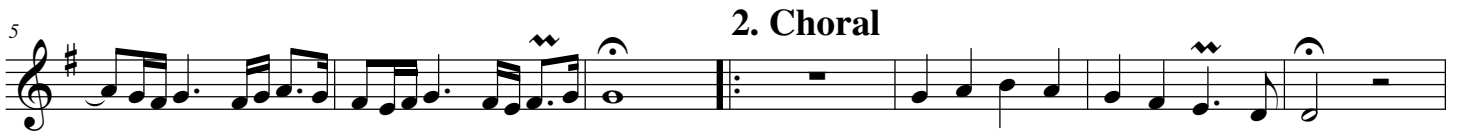
Adapted for Trumpet and Organ

Trumpet in C

Peter Gerritz (1681 - 1728)

Arr. Michel Rondeau

1. Praeludium ♩ = 80



CHORALE PRELUDE

(from: 'Freu dich sehr, o meine Seele' - 1724)

Adapted for Trumpet and Organ

Trumpet in D

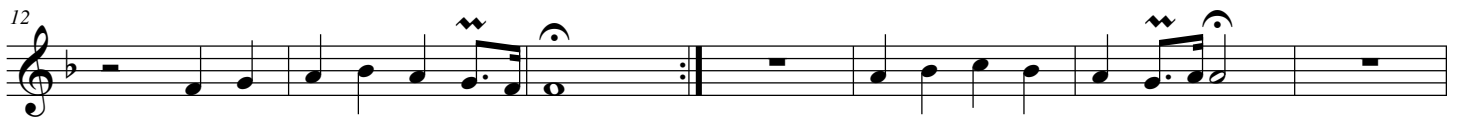
Peter Gerritz (1681 - 1728)

Arr. Michel Rondeau

1. Praeludium ♩ = 80



2. Choral



3. Variatio



CHORALE PRELUDE

(from: 'Freu dich sehr, o meine Seele' - 1724)

Adapted for Trumpet and Organ

Peter Gerritz (1681 - 1728)

Arr. Michel Rondeau

Organ

Trumpet in C

1. Praeludium ♩ = 80



C Tpt.

Org.



C Tpt.

2. Choral

Org.



CHORALE PRELUDE - Gerritz - Organ

C Tpt.

Org.

C Tpt.

Org.

C Tpt.

Org.

3. Variatio

C Tpt.

Org.

CHORALE PRELUDE - Gerritz - Organ

C Tpt.

Org.

39

39

Detailed description: This system covers measures 39 to 45. The C Tpt. part (top staff) has rests from measure 39 to 44, then plays a half note G4 with a trill in measure 45. The Organ part (bottom two staves) features a complex texture: the right hand plays a melodic line with eighth and sixteenth notes, while the left hand plays a steady bass line of quarter notes. Measure 39 starts with a repeat sign.

C Tpt.

Org.

46

46

Detailed description: This system covers measures 46 to 52. The C Tpt. part (top staff) has rests from measure 46 to 49, then plays a half note G4 with a trill in measure 50, followed by a half note F#4 in measure 51 and a half note G4 with a trill in measure 52. The Organ part (bottom two staves) continues with the melodic and bass lines, including a repeat sign at the start of measure 46.

C Tpt.

Org.

53

53

Detailed description: This system covers measures 53 to 59. The C Tpt. part (top staff) has rests from measure 53 to 59. The Organ part (bottom two staves) continues with the melodic and bass lines, featuring various ornaments and trills in the right hand.

C Tpt.

Org.

60

60

Detailed description: This system covers measures 60 to 66. The C Tpt. part (top staff) plays a half note G4 with a trill in measure 60, followed by a half note F#4 in measure 61, a half note G4 with a trill in measure 62, and rests from measure 63 to 66. The Organ part (bottom two staves) continues with the melodic and bass lines, including a repeat sign at the start of measure 60.

CHORALE PRELUDE - Gerritz - Organ

C Tpt.

67

Org.

Detailed description: This system contains measures 67 through 74. The C Tpt. part (top staff) begins at measure 67 with a treble clef, a key signature of one sharp (F#), and a common time signature. It features a melodic line with a trill (tr) in measure 68, followed by a half note in measure 69, and a quarter note in measure 70. The Organ part (bottom two staves) starts at measure 67 with a bass clef and a key signature of one sharp. The right hand plays a series of chords and single notes, including a trill in measure 73. The left hand plays a steady eighth-note accompaniment.

C Tpt.

75

Org.

Detailed description: This system contains measures 75 through 82. The C Tpt. part (top staff) begins at measure 75 with a treble clef, a key signature of one sharp, and a common time signature. It features a melodic line with a trill (tr) in measure 76, followed by a half note in measure 77, and a quarter note in measure 78. The Organ part (bottom two staves) starts at measure 75 with a bass clef and a key signature of one sharp. The right hand plays a series of chords and single notes, including a trill in measure 81. The left hand plays a steady eighth-note accompaniment.