

TWO CHORALE PRELUDES

(from: 'Wacht auf, ihr schönen Vögelein' and 'Laßt uns
Kindlein wiegen', Psalterium harmonicum - 1642)
for 2 Horns, 2 Flugelhorns, 2 Trumpets, 4 Trombones and Tuba

Score (01':30")

Jacob Gippenbusch (1612 - 1664)

Arr. Michel Rondeau

Allegro ♩ = 75

Horn in F 1
mf

Horn in F 2
mf

Trumpet in B \flat 1
mf

Trumpet in B \flat 2
mf

Flugelhorn 1
mf

Flugelhorn 2
mf

Trombone 1
mp

Trombone 2
mp

Trombone 3
mf

Bass Trombone
mf

Tuba
mf *mp*

TWO CHORALE PRELUDES - Gippenbusch - Score

6

Hn. 1

Hn. 2

B \flat Tpt. 1

B \flat Tpt. 2

Flghn. 1

Flghn. 2

Tbn. 1

Tbn. 2

Tbn. 3

B. Tbn.

Tuba

mf

mf

mf

TWO CHORALE PRELUDES - Gippenbusch - Score

ff

Hn. 1

Hn. 2

B \flat Tpt. 1

B \flat Tpt. 2

Flghn. 1

Flghn. 2

Tbn. 1

Tbn. 2

Tbn. 3

B. Tbn.

Tuba

mp

TWO CHORALE PRELUDES - Gippenbusch - Score

16

Hn. 1

2X

2X Fini

mf

Hn. 2

2X

2X Fini

mf

B \flat Tpt. 1

2X

2X Fini

mf

B \flat Tpt. 2

2X

2X Fini

mf

Flghn. 1

2X

2X Fini

mf

Flghn. 2

16

2X

2X Fini

mf

Tbn. 1

2X

2X Fini

mf

Tbn. 2

2X

2X Fini

mf

Tbn. 3

2X

2X Fini

mf

B. Tbn.

2X

2X Fini

mf

Tuba

2X

2X Fini

mf

TWO CHORALE PRELUDES - Gippenbusch - Score

21

Hn. 1

Hn. 2

B♭ Tpt. 1

B♭ Tpt. 2

Flghn. 1

21

Flghn. 2

Tbn. 1

Tbn. 2

Tbn. 3

B. Tbn.

Tuba

TWO CHORALE PRELUDES - Gippenbusch - Score

25

Hn. 1

Hn. 2

B \flat Tpt. 1

B \flat Tpt. 2

Flghn. 1

Flghn. 2

Tbn. 1

Tbn. 2

Tbn. 3

B. Tbn.

Tuba

D.C. al Fine

TWO CHORALE PRELUDES

(from: 'Wacht auf, ihr schönen Vögelein' and 'Laßt uns
Kindlein wiegen', Psalteriolum harmonicum - 1642)
for 2 Horns, 2 Flugelhorns, 2 Trumpets, 4 Trombones and Tuba

Horn in F 1

Jacob Gippenbusch (1612 - 1664)
Arr. Michel Rondeau

Allegro ♩. = 75

mf

2X Fini

mf

D.C. al Fine

TWO CHORALE PRELUDES

(from: 'Wacht auf, ihr schönen Vögelein' and 'Laßt uns
Kindlein wiegen', Psalteriolum harmonicum - 1642)
for 2 Horns, 2 Flugelhorns, 2 Trumpets, 4 Trombones and Tuba

Horn in F 2

Jacob Gippenbusch (1612 - 1664)

Arr. Michel Rondeau

Allegro ♩. = 75

The musical score for Horn in F 2 consists of four staves of music in 6/8 time. The first staff begins with a treble clef, a key signature of one flat (F major), and a dynamic marking of *mf*. It features a sequence of eighth notes followed by a triplet of eighth notes. The second staff starts at measure 9 and includes a triplet of eighth notes and a double-measure rest marked '2X'. The third staff starts at measure 17 and includes a double-measure rest. The fourth staff starts at measure 24 and concludes with a double-measure rest and the instruction 'D.C. al Fine'.

TWO CHORALE PRELUDES

(from: 'Wacht auf, ihr schönen Vögelein' and 'Laßt uns
Kindlein wiegen', Psalterium harmonicum - 1642)
for 2 Horns, 2 Flugelhorn, 2 Trumpets, 4 Trombones and Tuba

B \flat Flugelhorn 1

Jacob Gippenbusch (1612 - 1664)
Arr. Michel Rondeau

Allegro $\text{♩} = 75$

mf

8

3

15

2X Fini *mf*

22

D.C. al Fine

TWO CHORALE PRELUDES

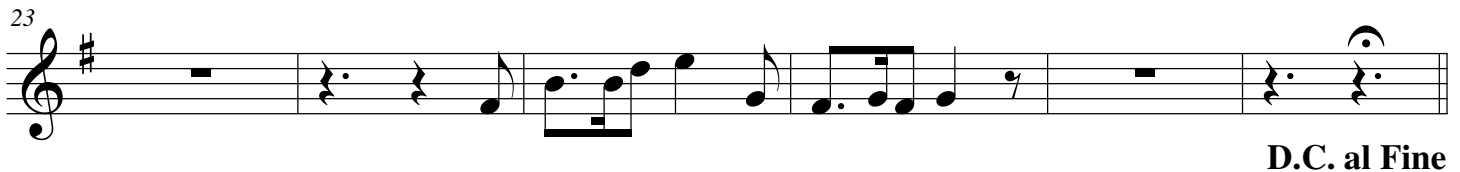
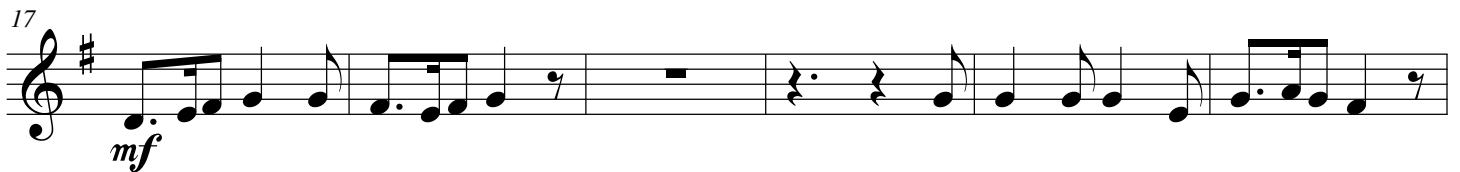
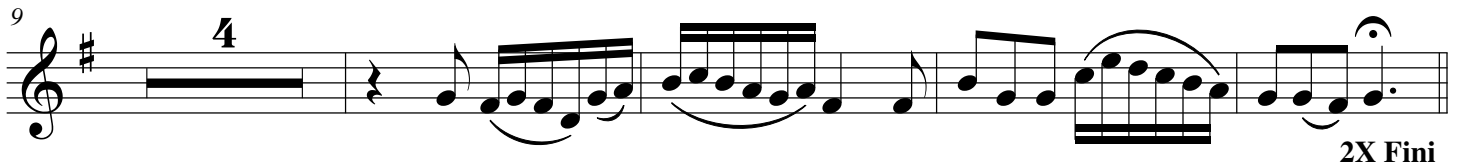
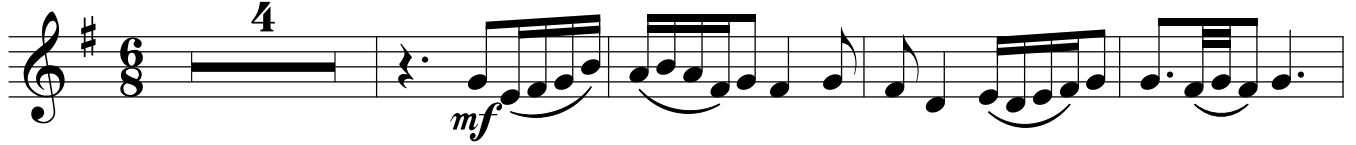
(from: 'Wacht auf, ihr schönen Vögelein' and 'Laßt uns
Kindlein wiegen', Psalterium harmonicum - 1642)
for 2 Horns, 2 Flugelhorn, 2 Trumpets, 4 Trombones and Tuba

B \flat Flugelhorn 2

Jacob Gippenbusch (1612 - 1664)

Arr. Michel Rondeau

Allegro $\text{♩} = 75$



TWO CHORALE PRELUDES

(from: 'Wacht auf, ihr schönen Vögelein' and 'Laßt uns
Kindlein wiegen', Psalterium harmonicum - 1642)
for 2 Horns, 2 Flugelhorns, 2 Trumpets, 4 Trombones and Tuba

Trumpet in B \flat 1

Jacob Gippenbusch (1612 - 1664)
Arr. Michel Rondeau

Allegro $\text{♩} = 75$

mf

9

mf

18

mf

24

3

3

2X

2X Fini

D.C. al Fine

TWO CHORALE PRELUDES

(from: 'Wacht auf, ihr schönen Vögelein' and 'Laßt uns
Kindlein wiegen', Psalterium harmonicum - 1642)
for 2 Horns, 2 Flugelhorns, 2 Trumpets, 4 Trombones and Tuba

Trumpet in B \flat 2

Jacob Gippenbusch (1612 - 1664)
Arr. Michel Rondeau

Allegro $\text{♩} = 75$

The musical score for Trumpet in B \flat 2 consists of four staves of music. The first staff begins with a treble clef, a key signature of one sharp (F#), and a 6/8 time signature. The tempo is marked 'Allegro' with a quarter note equal to 75 beats per minute. The first measure is marked with a dynamic of *mf*. The first staff ends with a triplet of eighth notes and a fermata. The second staff starts at measure 9 and includes a triplet of eighth notes and a double repeat sign (2X) over a quarter note with a fermata, followed by the instruction '2X Fini'. The third staff starts at measure 18 and features a dynamic of *mf* and a series of sixteenth-note runs. The fourth staff starts at measure 24 and concludes with a double repeat sign and the instruction 'D.C. al Fine'.

TWO CHORALE PRELUDES

(from: 'Wacht auf, ihr schönen Vögelein' and 'Laßt uns
Kindlein wiegen', Psalteriolum harmonicum - 1642)
for 2 Horns, 2 Flugelhorns, 2 Trumpets, 4 Trombones and Tuba

Trombone 1

Jacob Gippenbusch (1612 - 1664)
Arr. Michel Rondeau

Allegro $\text{♩} = 75$

4

mp

9

2X Fini

17

mf

24

D.C. al Fine

TWO CHORALE PRELUDES

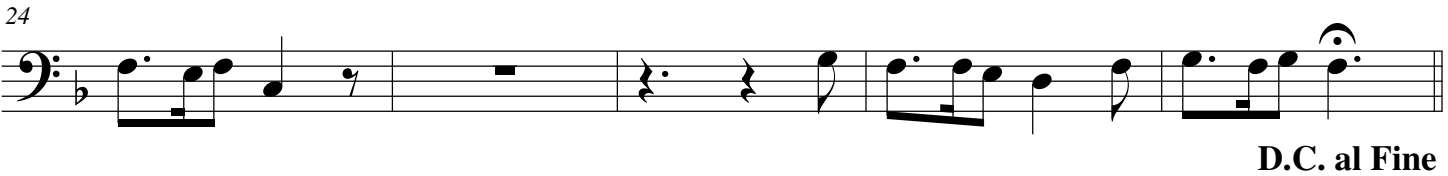
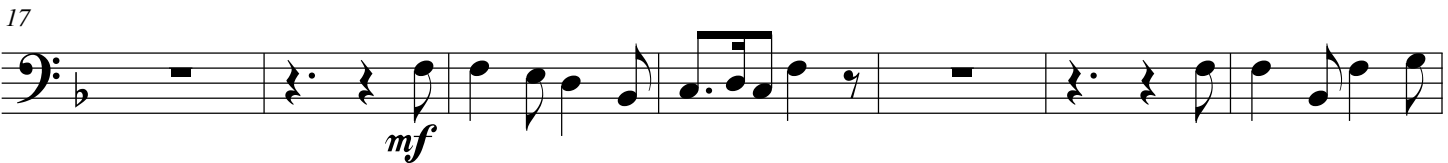
(from: 'Wacht auf, ihr schönen Vögelein' and 'Laßt uns
Kindlein wiegen', Psalterium harmonicum - 1642)
for 2 Horns, 2 Flugelhorns, 2 Trumpets, 4 Trombones and Tuba

Trombone 2

Jacob Gippenbusch (1612 - 1664)

Arr. Michel Rondeau

Allegro $\text{♩} = 75$
4



TWO CHORALE PRELUDES

(from: 'Wacht auf, ihr schönen Vögelein' and 'Laßt uns
Kindlein wiegen', Psalteriolum harmonicum - 1642)
for 2 Horns, 2 Flugelhorns, 2 Trumpets, 4 Trombones and Tuba

Trombone 3

Jacob Gippenbusch (1612 - 1664)
Arr. Michel Rondeau

Allegro $\text{♩} = 75$

mf **3** *mf*

9

3 2X Fini

17

mf

24

D.C. al Fine

TWO CHORALE PRELUDES

(from: 'Wacht auf, ihr schönen Vögelein' and 'Laßt uns
Kindlein wiegen', Psalteriolum harmonicum - 1642)
for 2 Horns, 2 Flugelhorns, 2 Trumpets, 4 Trombones and Tuba

Bass Trombone

Jacob Gippenbusch (1612 - 1664)

Arr. Michel Rondeau

Allegro ♩. = 75

The musical score for Bass Trombone consists of four staves of music. The first staff begins with a dynamic marking of *mf* and a tempo marking of Allegro ♩. = 75. The music is in bass clef, one flat, and 6/8 time. The first staff ends with a triplet of eighth notes and a dynamic marking of *mf*. The second staff starts at measure 9 and ends with a triplet of eighth notes and the instruction "2X Fini". The third staff starts at measure 17 and ends with a dynamic marking of *mf*. The fourth staff starts at measure 24 and ends with the instruction "D.C. al Fine".

TWO CHORALE PRELUDES

(from: 'Wacht auf, ihr schönen Vögelein' and 'Laßt uns
Kindlein wiegen', Psalterium harmonicum - 1642)
for 2 Horns, 2 Flugelhorn, 2 Trumpets, 4 Trombones and Tuba

Tuba

Jacob Gippenbusch (1612 - 1664)
Arr. Michel Rondeau

Allegro ♩. = 75

mf *mp*

6

mf

12

mp *mf* 2X Fini

18

mf

24

mf D.C. al Fine