

# Floraline Shore

Words by  
E. B. Dewing

Music by  
Joseph P. Webster

**Amoroso**

6

1. I ram - bled one  
2. The sky - larks were  
3. The wa - ters were

6

C

11

morn - ing at ear - li - est dawn - ing, A - long the green banks of the  
sing - ing, still joy - ful - ly fling - ing Their mat - ins songs o - ver the  
11 flow - ing, the moist breez - es blow - ing, And morn a - gain dawned on the

C G C F C

16

sweet riv-er Nore; The sky - larks were sing - ing, from heav - en-ward  
 sweet riv-er Nore; The wa - ters were flow - ing, the soft air was  
 sweet riv-er Nore; The sky - larks were wing - ing, and heav - en-ward

G 7 C C C G 7

21

fling-ing The pure — liq - uid notes from their won - der-ful score. I  
 blow-ing, And flow - ers were bloom - ing, as nev - er be - fore; But  
 sing-ing, The songs — that they sung in the spring - time of yore; And

C F C G 7 C

26

halt - ed to hark - en where shad - ows did dark - en The — path wind-ing  
 there in the dawn - ing of ro - se - ate morn - ing Whose beau - ties en -  
 there the old sto - ry re - newed on its glo - ry; Was — whis - pered a -

A m A m E A m A m

31

on by the sweet riv - er Nore; When forth from her hid - ing, in  
vi - roned the sweet riv - er Nore; Where all was E - ly - sian, the  
31 gain by the sweet riv - er Nore; And O! may I nev - er for -

Am E Am G7 C C

36

na - ture con - fid - ing, Tripped light - ly the maid - en called  
love - li - est vi - sion, Was she whom the mus - es named  
get that sweet riv - er, Or cease to be charmed with its

36

G C F C

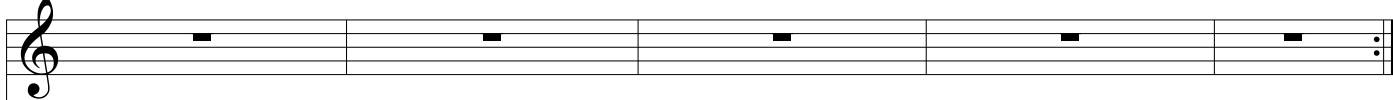
40

Flo - ra - line Shore.  
Flo - ra - line Shore.  
Flo - ra - line Shore.

40

G C

45



45

A grand staff consisting of two staves, treble and bass clef. The music spans five measures. In the first four measures, the treble staff has a melody of quarter and eighth notes, while the bass staff has a continuous eighth-note accompaniment. In the fifth measure, the treble staff has a half note and the bass staff has a whole note chord. The piece concludes with a double bar line and repeat dots.